

# Logan Square

2291 N. MILWAUKEE AVE, CHICAGO, ILLINOIS

2,040 SQUARE FEET  
FOR LEASE



# Logan Square

2291 N. MILWAUKEE AVE, CHICAGO, ILLINOIS

## PROPERTY HIGHLIGHTS

- Located at the corner of Milwaukee & California at the base of 216 upscale residential units
  - » 2,040 SF Available Built-out office suite
- 1/2 block from California Blue Line
  - » 1,702,462 riders annually/5,504 average weekday
- Just steps away from some of Chicago's most unique shops, restaurants, taverns, and coffee bars
- Clear span space

## DEMOGRAPHICS

|                    | ½ MILE    | 1 MILE    | 2 MILES   |
|--------------------|-----------|-----------|-----------|
| TOTAL POPULATION   | 17,855    | 65,570    | 239,659   |
| DAYTIME POPULATION | 7,645     | 27,657    | 113,490   |
| HOUSEHOLDS         | 8,496     | 30,715    | 104,295   |
| AVG HH INCOME      | \$160,625 | \$166,853 | \$173,921 |

## TRAFFIC COUNTS

|                |           |
|----------------|-----------|
| MILWAUKEE AVE  | 6,119 VPD |
| CALIFORNIA AVE | 8,775 VPD |

## WALK SCORE®

|               |           |  |
|---------------|-----------|--|
| WALK SCORE    | <b>95</b> | walker's paradise > daily errands do not require a car         |
| TRANSIT SCORE | <b>73</b> | excellent transit > transit is convenient for most trips       |
| BIKE SCORE    | <b>98</b> | biker's paradise > daily errands can be accomplished on a bike |

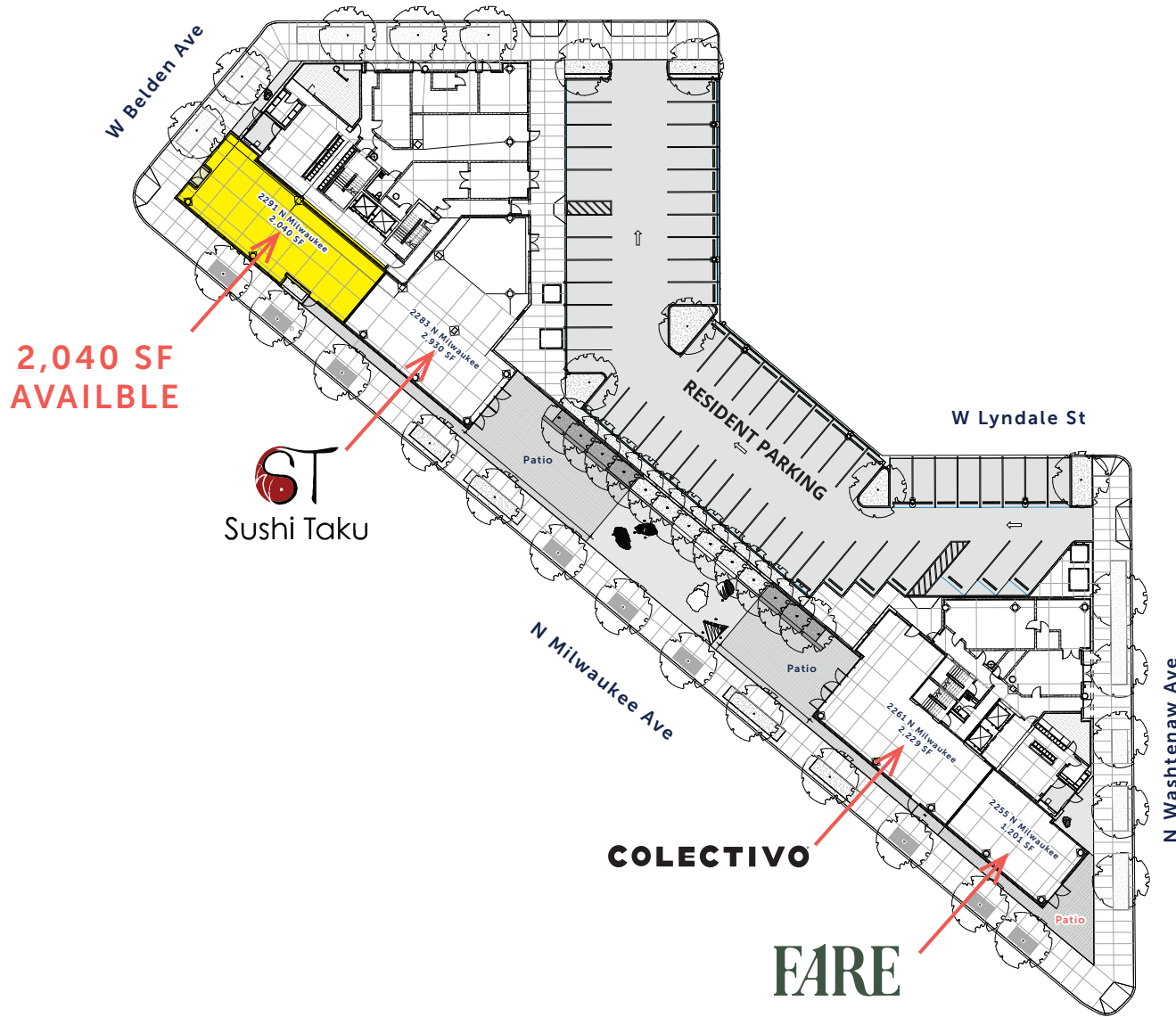


# Logan Square



# Logan Square

2291 N. MILWAUKEE AVE, CHICAGO, ILLINOIS



LEASING  
CONTACTS

**JONATHAN HYMAN**  
jhyman@metrocre.com  
224.365.8144

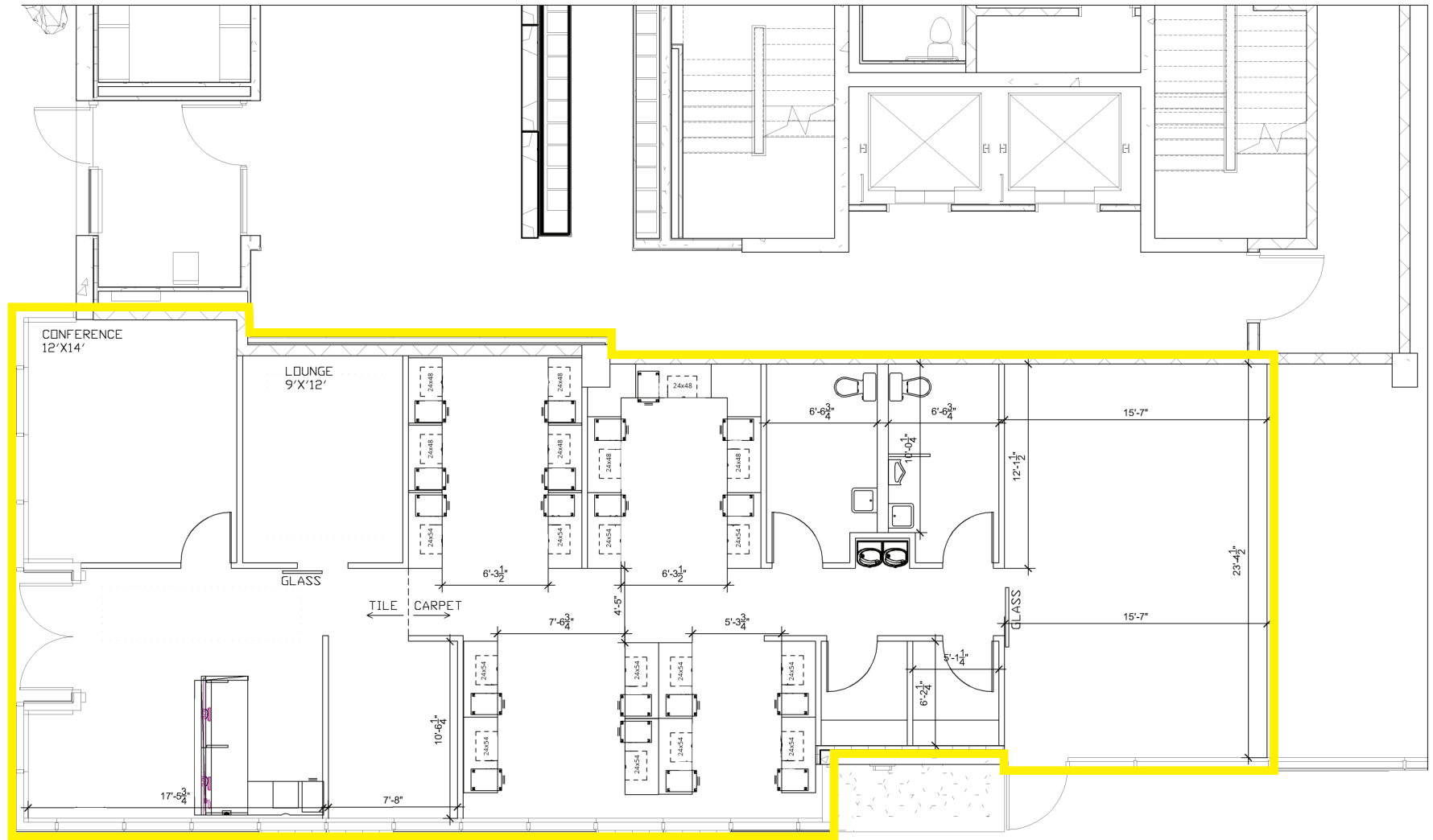
**HANNAH PERL**  
hperl@metrocre.com  
847.849.1026



# Logan Square

2291 N. MILWAUKEE AVE, CHICAGO, ILLINOIS

2,040 SF AVAILABLE



LEASING  
CONTACTS

**JONATHAN HYMAN**  
jhyman@metrocre.com  
224.365.8144

**HANNAH PERL**  
hperl@metrocre.com  
847.849.1026

**METRO**  
COMMERCIAL REAL ESTATE