



PREMIER
COMMERCIAL
PROPERTIES

FOR SALE



Office Condo for Sale

14245 St. Francis Blvd, Suite 103
Ramsey, MN 55303

Property Highlights:

- 1,800 SF move in ready professional office
- Great location in a growing area next to new developments
- Monument signage available
- Central Location close to retail and restaurants
- Nice open reception area with five large offices, large open conference / break area with kitchenette, work / production area, two restrooms and storage area
- Sale Price: \$333,000.00

PROPERTY DETAILS

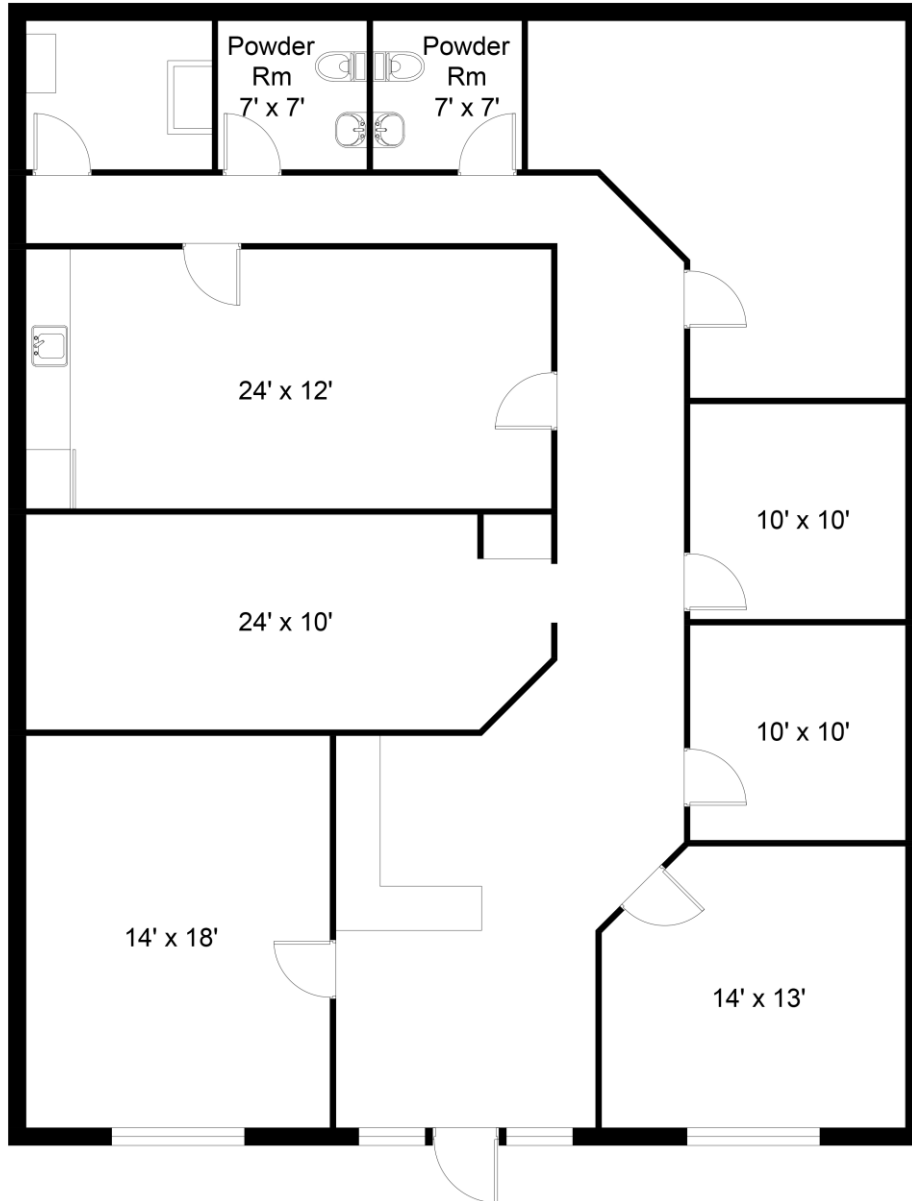
For Sale: \$333,000.00
Property Taxes: \$6,263.94 (2026)
Association Dues: \$5,500 Annually

FOR MORE INFORMATION, CONTACT

Richard Lee

612-718-9919

richlee@premiercommercialproperties.com



FLOOR PLAN

This floor plan including furniture, fixture measurements and dimensions are approximate and for illustrative purposes only.
BoxBrownie.com gives no guarantee, warranty or representation as to the accuracy and layout.
All enquiries must be directed to the agent, vendor or party representing this floor plan.

14245 St Francis Blvd NW Ste 103, Ramsey, MN 55303



PREMIER
COMMERCIAL
PROPERTIES

FOR SALE

CONTACT: Richard Lee

MOBILE: 612-718-9919

EMAIL: richlee@premiercommercialproperties.com





PREMIER
COMMERCIAL
PROPERTIES

FOR SALE

CONTACT: Richard Lee

MOBILE: 612-718-9919

EMAIL: richlee@premiercommercialproperties.com

