

# Fort Apache Corporate Center

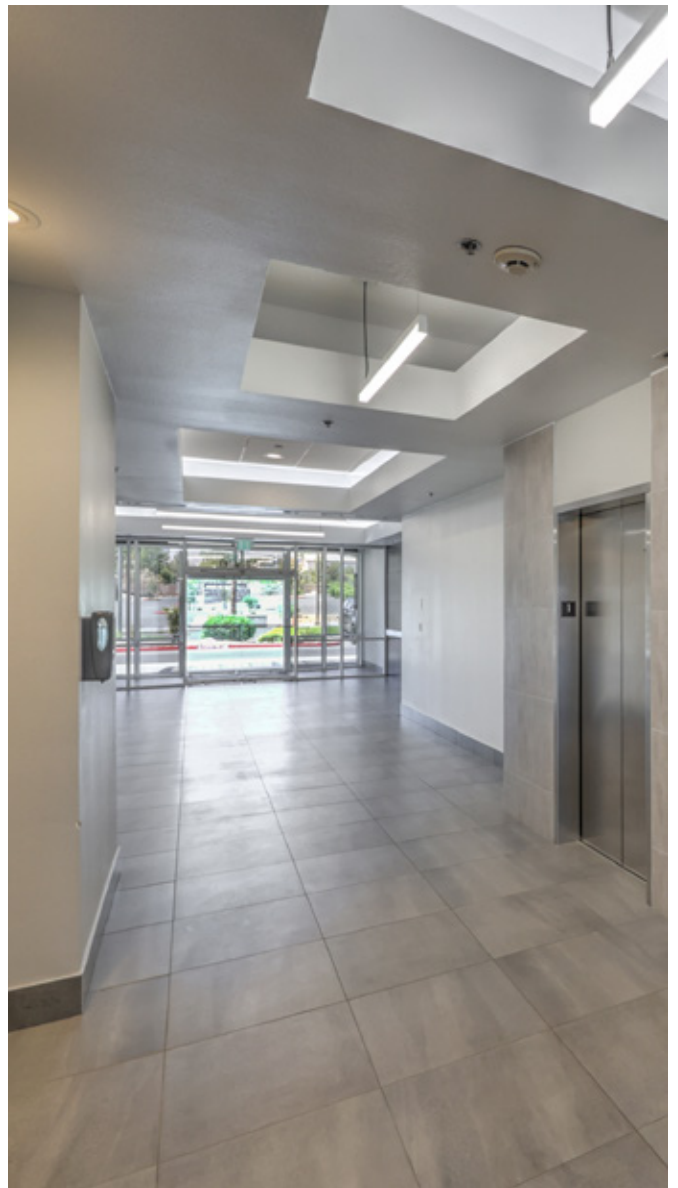
4670 & 4730 S Fort Apache Rd | Las Vegas, NV 89147

FOR LEASE



# Property Overview

Fort Apache Corporate Center consists of two professional office buildings located on Fort Apache Road between Flamingo Rd and Tropicana Ave. Situated in Southwest Las Vegas along the I-215 Beltway, the Property has a preferred location with immediate access to the beltway and outstanding visibility. Additionally, the Property is situated amongst a wealth of local amenities and just 15 minutes from Harry Reid International Airport and the world-famous Las Vegas strip.



# Property Highlights



Building renovations underway



Spec suites under construction for Q4 2025 occupancy



High visibility, located on the I-215; convenient access to the entire valley



4:1000 parking ratio



Ample signage opportunities for small users



Two (2) buildings totaling  $\pm 110,798$  s.f.



Lease Rate \$3.20 FSG



---

Suite	RSF
<b>4670-150</b>	$\pm 1,493$
<b>4730-200</b>	$\pm 3,053$

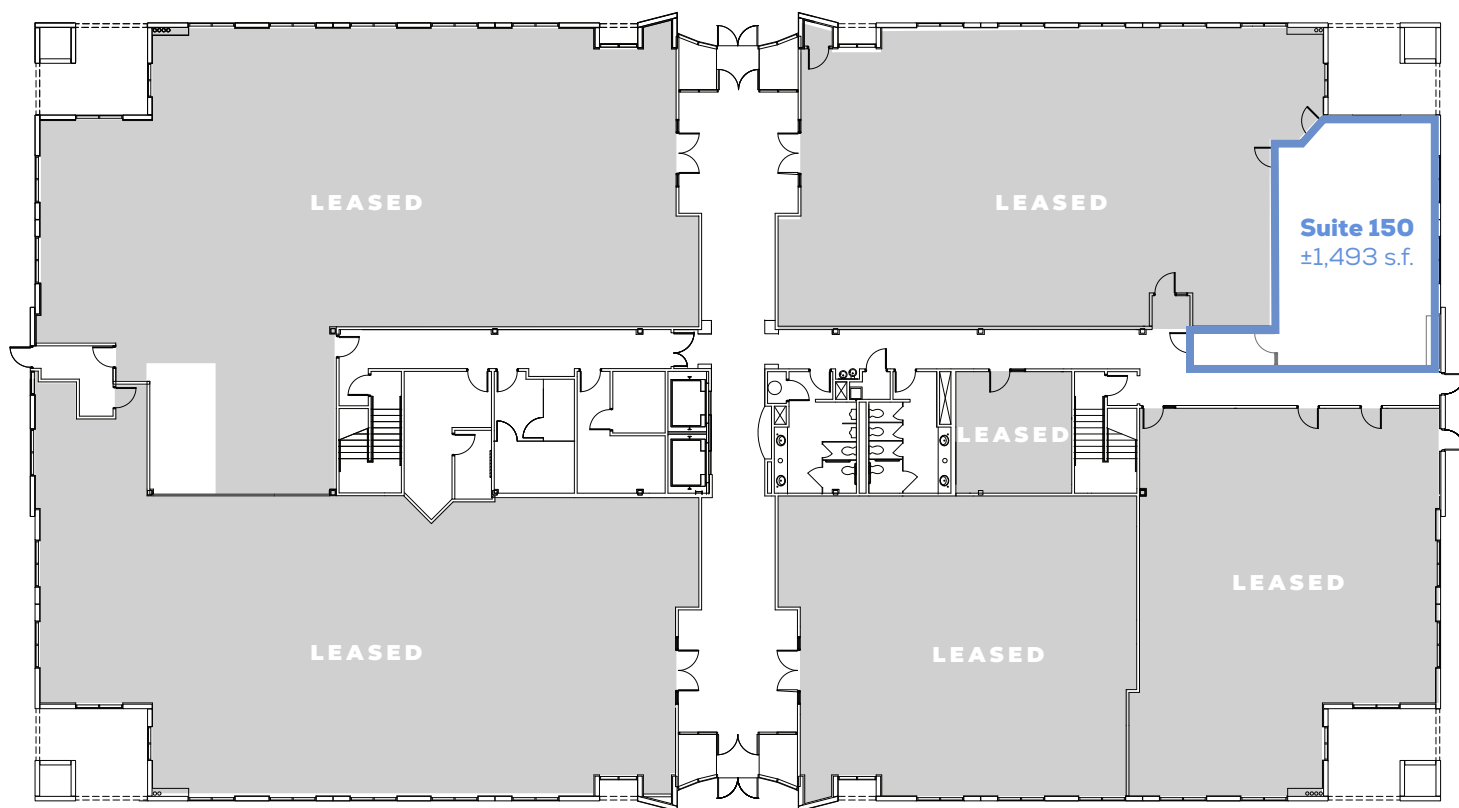
---

# 4670 | First Floor

## Available Suites:

### Suite 150

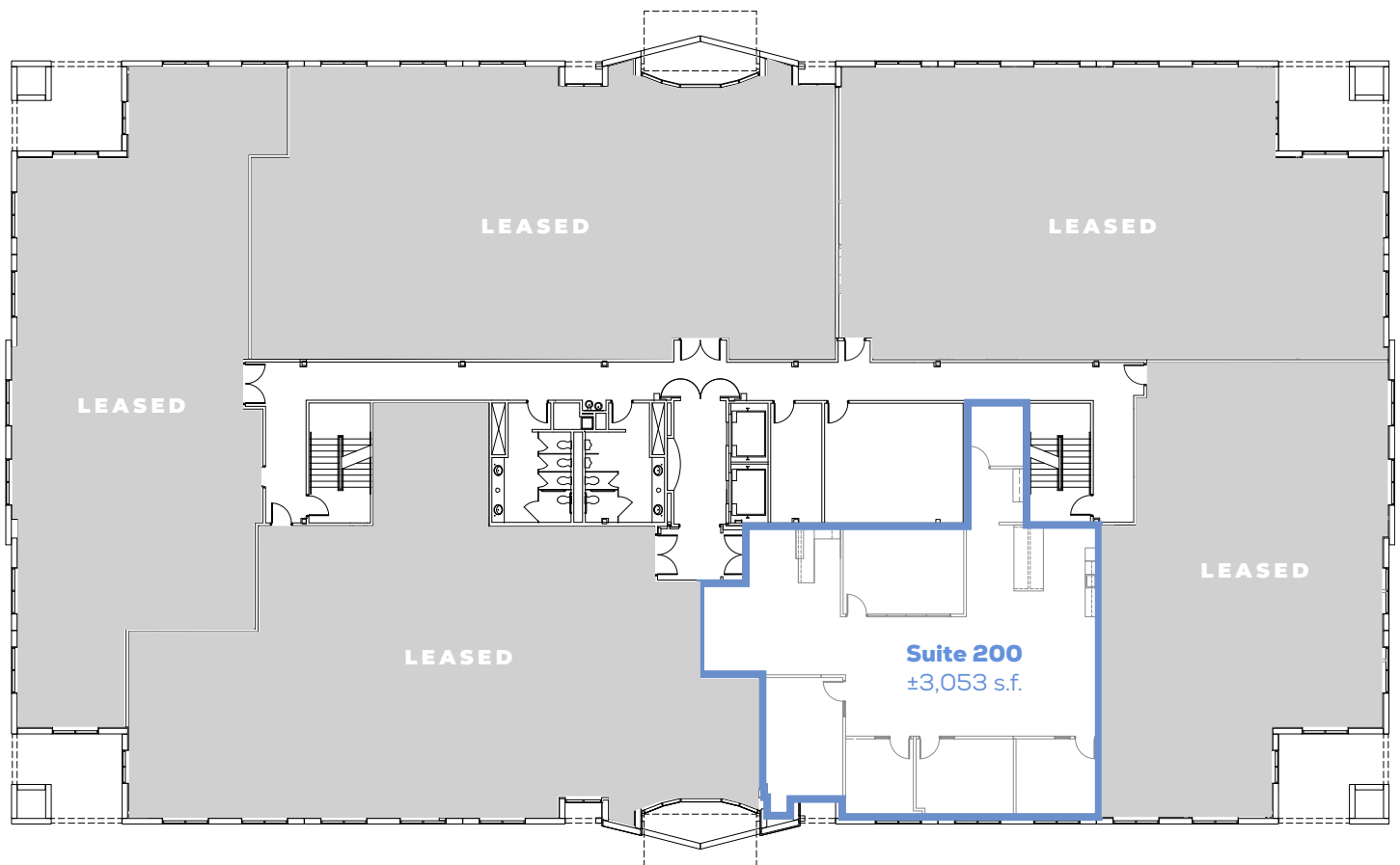
±1,493 s.f.



# 4730 | Second Floor

## Available Suites:

**Suite 200**  
±3,053 s.f.





For More Information, Contact:

**Nick Barber, SIOR**

Managing Director  
nick.barber@jll.com  
+1 702 360 4927  
NV Lic. #S.58027

**Travis Landes, SIOR**

Executive Vice President  
travis.landes@jll.com  
+1 702 522 5122  
NV Lic. #S.177027

**Lilly Kossoff**

Senior Associate  
lillian.kossoff@jll.com  
+1 702 522 5107  
NV Lic. #S.195790



Jones Lang LaSalle Brokerage, Inc.  
License #: B.1000836.CORP  
1980 Festival Plaza Drive, Suite 250 | Las Vegas,  
Nevada 89135 | 702-360-4907

Although information has been obtained from sources deemed reliable, JLL does not make any guarantees, warranties or representations, express or implied, as to the completeness or accuracy as to the information contained herein. Any projections, opinions, assumptions or estimates used are for example only. There may be differences between projected and actual results, and those differences may be material. JLL does not accept any liability for any loss or damage suffered by any party resulting from reliance on this information. If the recipient of this information has signed a confidentiality agreement with JLL regarding this matter, this information is subject to the terms of that agreement. ©2025 Jones Lang LaSalle Brokerage, Inc. All rights reserved.