

FOR LEASE

3,404 - 3,997 SF Available

4800 Bee Cave Road
Austin, TX 78746

FOR MORE INFORMATION, PLEASE CONTACT:

CRAIG COUCH

mobile: (512) 785 7617
email: couch@centric-re.com

KENT MCCOY

mobile: (469) 955 5368
email: mccoy@centric-re.com



CENTRIC
COMMERCIAL

PROPERTY SUMMARY

4800 Bee Cave Road
Austin, TX 78746

Situated along Bee Cave Road (RM 2244), a major east-west artery connecting West Lake Hills to Loop 360 and MoPac, 4800 Bee Cave Road offers a premier office environment in the heart of West Lake Hills, one of Austin's most established and sought-after professional corridors.

Surrounded by high-income demographics and a dense concentration of financial, medical, and professional service firms, this location provides exceptional visibility, prestige, and convenience for tenants seeking a Westlake address.

PROPERTY OVERVIEW

- **Building Size:** ±10,600 RSF
- **Square Footage Available:** ±3,404 - 3,997 RSF
- **Suite Number:** Suite 100
- **Lease Rate:** \$27.50/NNN
- **OPEX ('26 est.):** TBD
- **Interior Finish Out:** Class A
- **Parking:** 4/1,000
(Ability for 5/1,000)
- **Signage:** Directory, Suite, & Monument



FOR MORE INFORMATION, PLEASE CONTACT:

CRAIG COUCH

mobile: (512) 785 7617
email: couch@centric-re.com

KENT MCCOY

mobile: (469) 955 5368
email: mccoy@centric-re.com



CENTRIC
COMMERCIAL

PHOTOS

4800 Bee Cave Road
Austin, TX 78746



CLICK HERE For
Additional Photos



FOR MORE INFORMATION, PLEASE CONTACT:

CRAIG COUCH

mobile: (512) 785 7617
email: couch@centric-re.com

KENT MCCOY

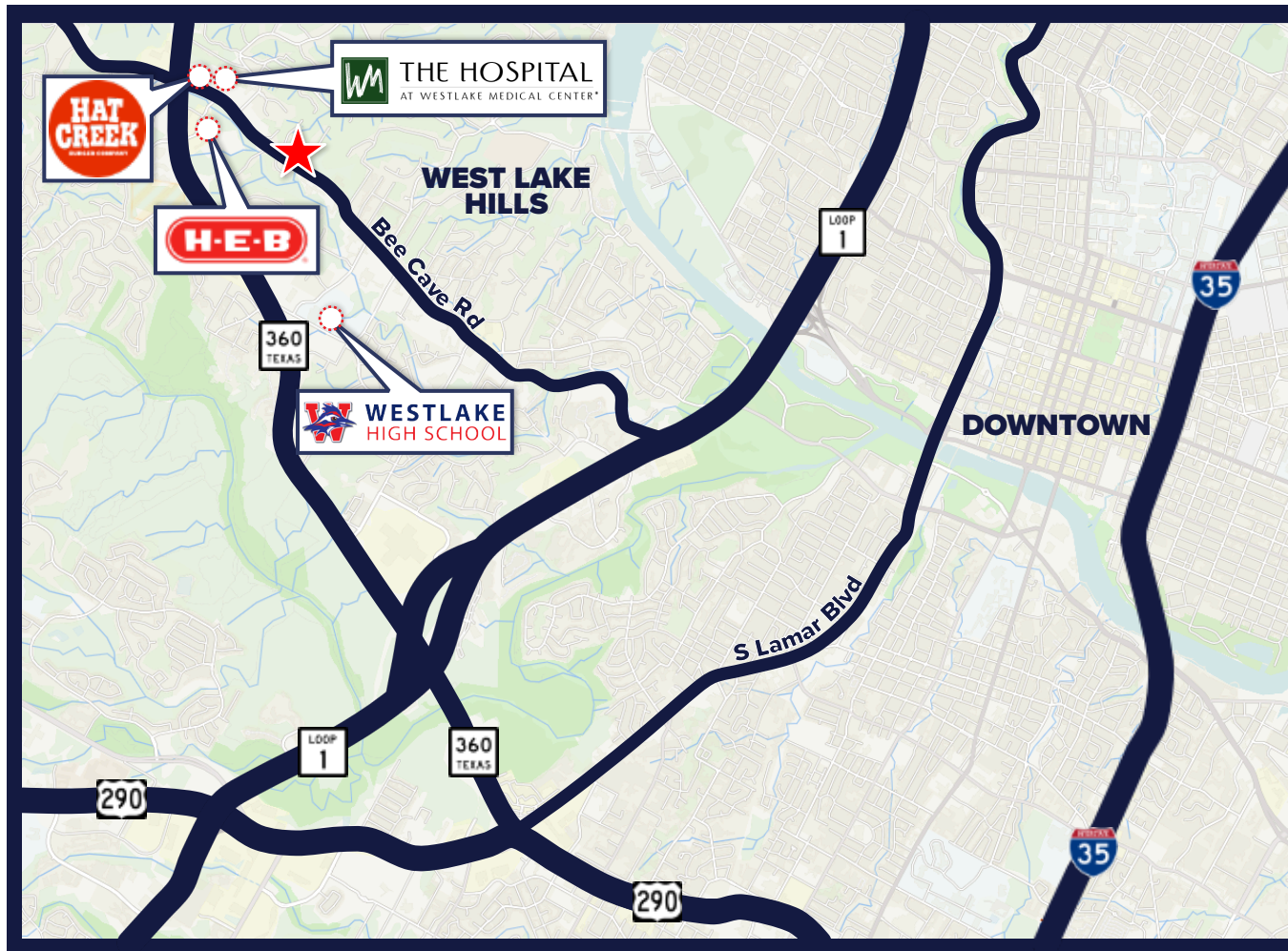
mobile: (469) 955 5368
email: mccoy@centric-re.com



CENTRIC
COMMERCIAL

MAP VIEW

4800 Bee Cave Road
Austin, TX 78746



FOR MORE INFORMATION, PLEASE CONTACT:

CRAIG COUCH

mobile: (512) 785 7617
email: couch@centric-re.com

KENT MCCOY

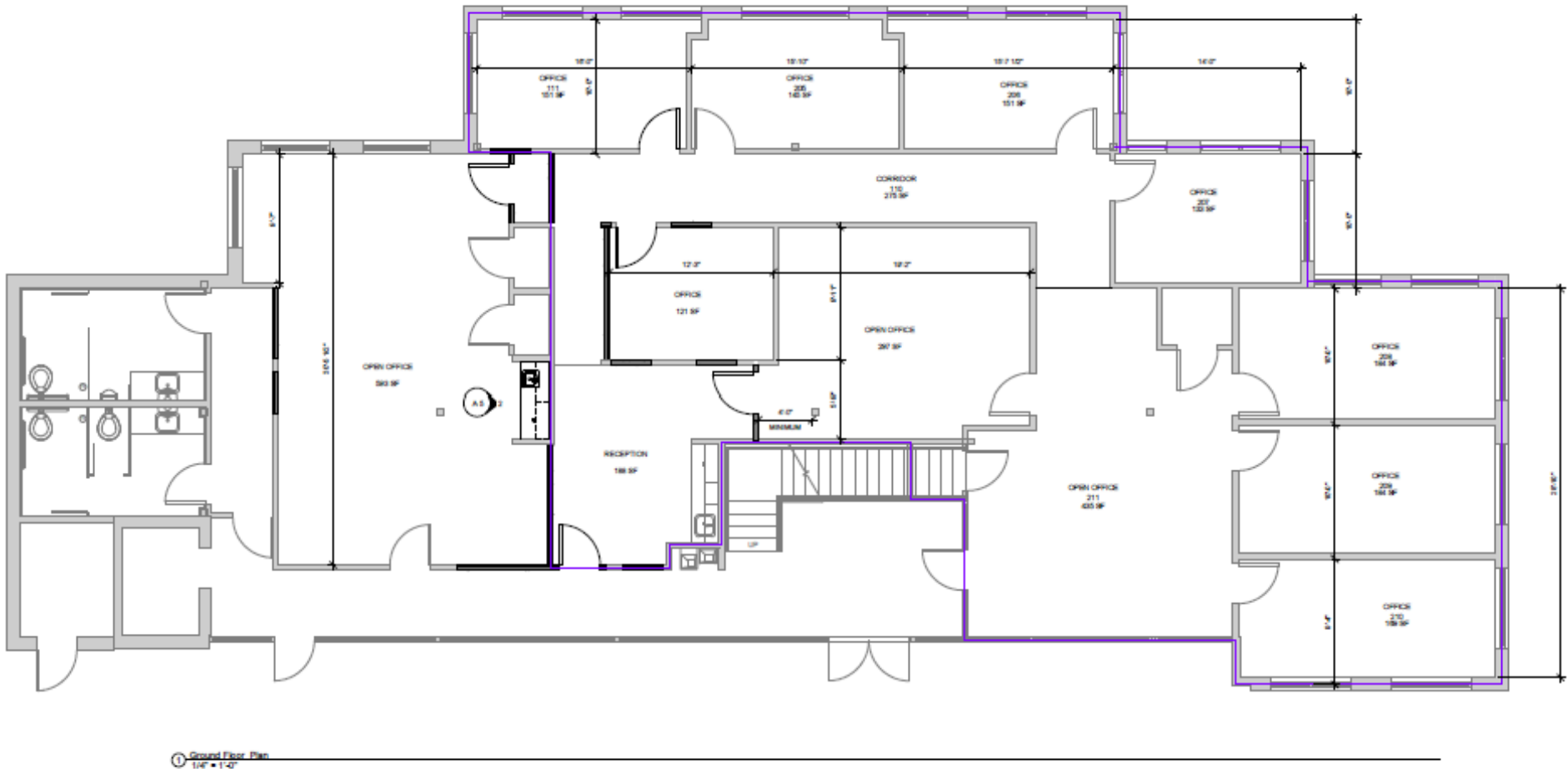
mobile: (469) 955 5368
email: mccoy@centric-re.com



CENTRIC
COMMERCIAL

FLOORPLAN

4800 Bee Cave Road
Austin, TX 78746



FOR MORE INFORMATION, PLEASE CONTACT:

CRAIG COUCH

mobile: (512) 785 7617
email: couch@centric-re.com

KENT MCCOY

mobile: (469) 955 5368
email: mcco@centric-re.com



CENTRIC
COMMERCIAL