

**FOR SALE**

**5019 Ulmerton Rd**

Clearwater, FL



**KEN D'AGOSTINO**  
**KEN@DAGREALTORS.COM**  
**941.320.0044**

**JASON D'AGOSTINO**  
**JASON@DAGREALTORS.COM**  
**941.685.1228**

**\$24/SF NNN**

**2,000 SQ FT**

**RETAIL**

preferred  
**SHORE**  
**COMMERCIAL**  
**REAL ESTATE**

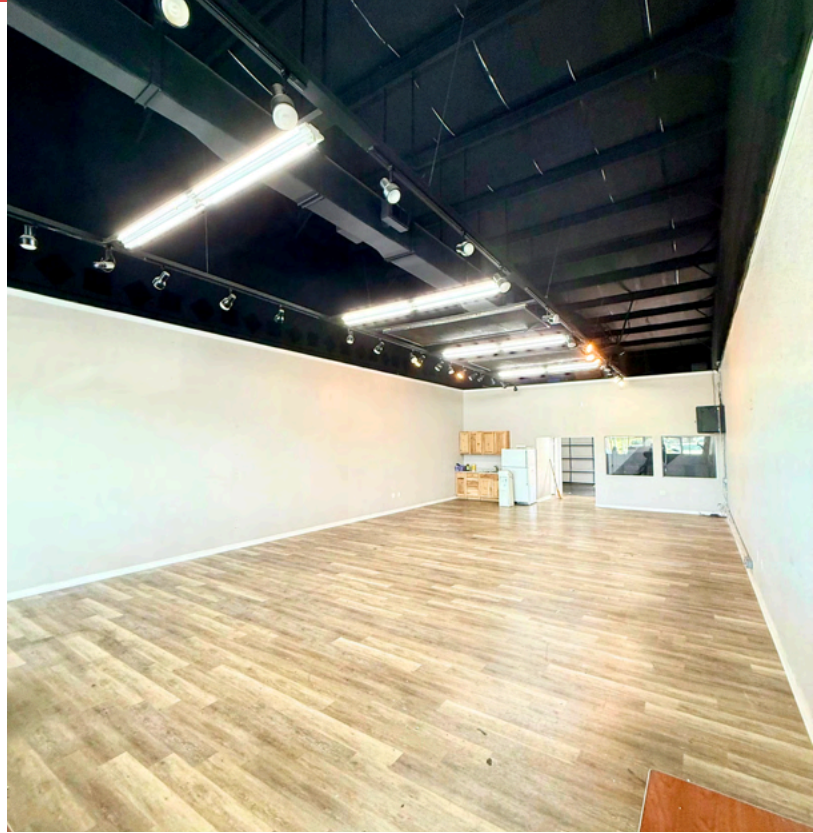


## OFFERING SUMMARY

- First Floor Retail Space
- Building & Pylon Signage on Ulmerton Rd
- Glass Storefront
- Kitchenette
- 1 Bathroom
- 16'x24' Warehouse Area
- 10'x10' Overhead Door in Rear
- Parking in Front & Rear

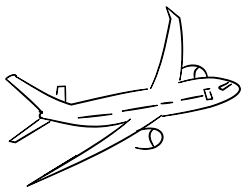


# UNIT PHOTOS



# UNIT PHOTOS





## TRAVEL

- **1.6 Miles to St Pete Clearwater Airport**
- **12 Miles to Clearwater Beach**
- **13 Miles to TPA Airport**
- **12 Miles to DTSP**
- **16 Miles to Downtown Tampa**

## ABOUT THE AREA

Stretching east-west through the heart of Pinellas County, the Ulmerton Road (SR 688) corridor is one of the Tampa Bay area's most active commercial arteries. Connecting Clearwater and Largo to I-275 and the greater St. Petersburg metro, this high-traffic thoroughfare offers unmatched visibility and accessibility for businesses of all types.

With strong daily traffic counts, proximity to Tampa International Airport, and easy access to Gulf Coast beaches, Ulmerton Road sits at the crossroads of commerce and convenience.

preferred  
**SHORE**  
**COMMERCIAL**  
**REAL ESTATE**

**KEN D'AGOSTINO**  
**KEN@DAGREALTORS.COM**  
**941.320.0044**

**JASON D'AGOSTINO**  
**JASON@PREFERREDSHORE.COM**  
**941.685.1228**



Preferred SHORE Commercial  
50 S Lemon #302  
Sarasota, FL 34236  
Licensed Real Estate Broker

