

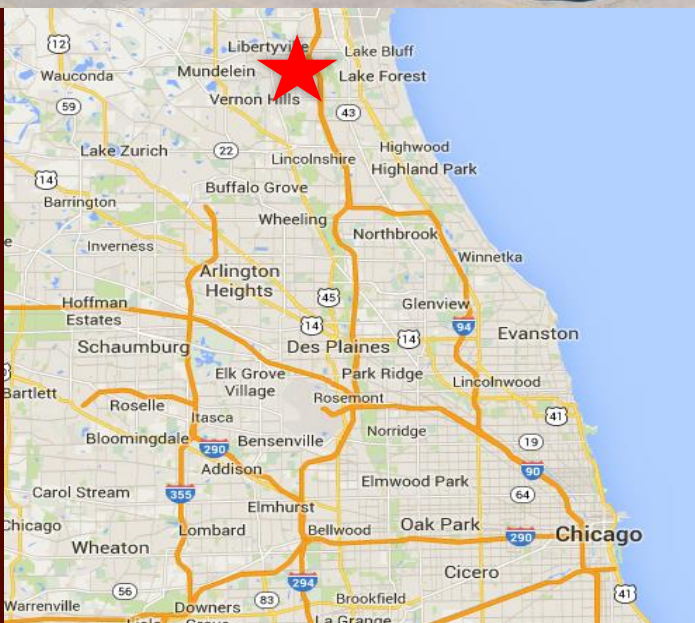
RETAIL SPACE FOR LEASE

GREENTREE PLAZA

4,350 SF – 41,850 SF

1153 S. Milwaukee Ave.

Libertyville, Illinois



- 108,000 sf center on Milwaukee Ave.
- Great access, visibility and parking with 33,500 VPD along Milwaukee Ave.
- Available spaces from 3,044 sf to 7,500 sf
- Join X-Golf, O'Reilly's Furniture, Little Steps PT, 4 Paws Animal Hospital and more.
- Located in Libertyville's "motor row" and primary shopping corridor
- Population: 1-mile 8,884 3-mile 58,392
- Strong demos: 1-mile HHI is \$122,724

GreenTree Plaza, Libertyville, Illinois



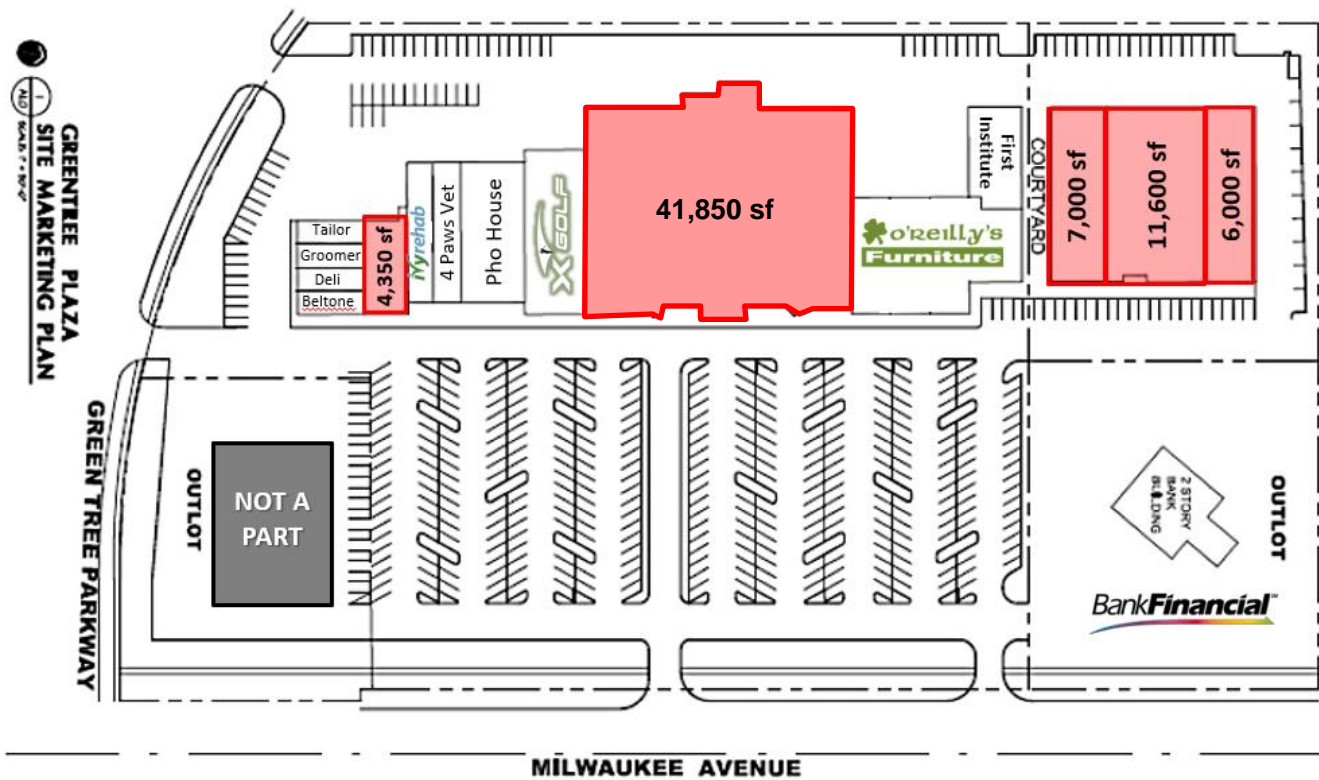
6,000 -
24,600 SF

41,850
HEALTH
CLUB

4,350 SF

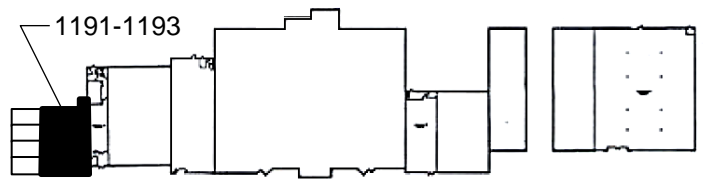
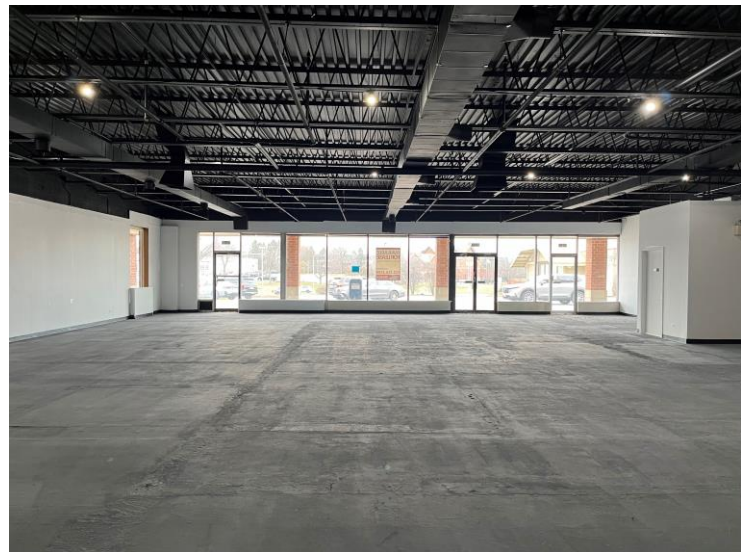
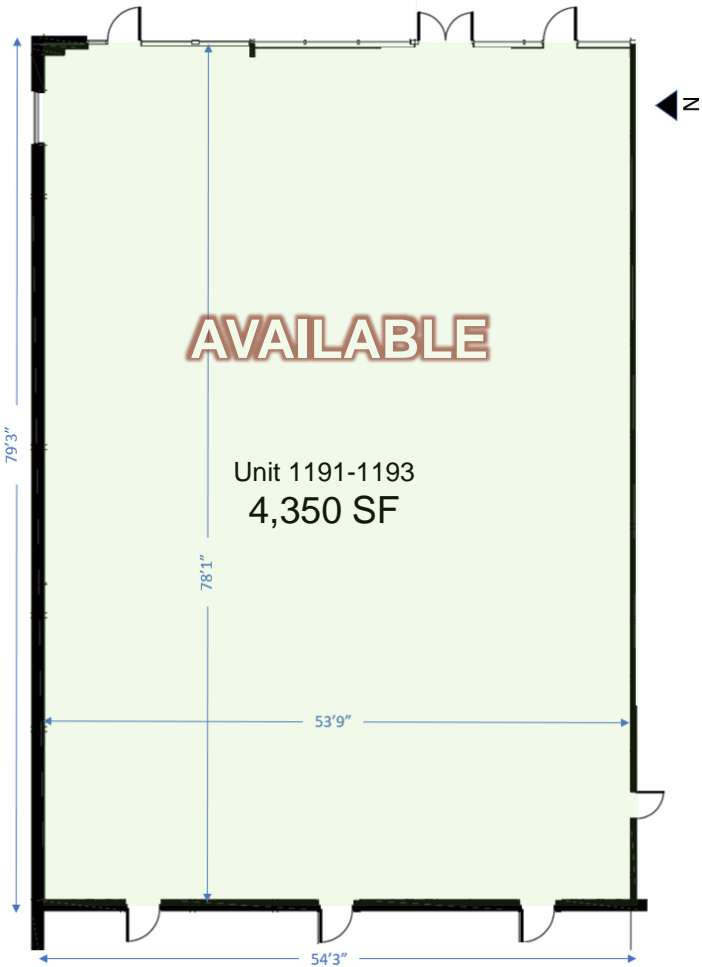


GreenTree Plaza, Libertyville, Illinois





GreenTree Plaza, Libertyville, Illinois



North Milwaukee Avenue

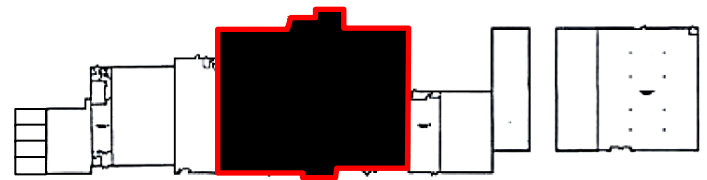
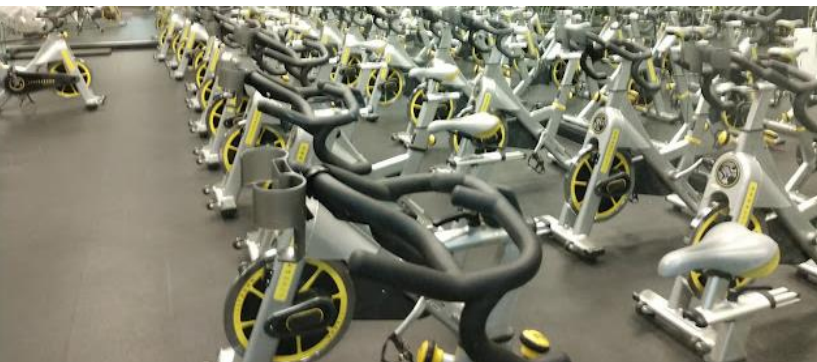


Key Plan
Not To Scale



41,850 SF Health Club

GreenTree Plaza, Libertyville, Illinois



North Milwaukee Avenue



Key Plan
Not To Scale

Joe Padorr

312.316.2300

jpadorr@seneca-re.com

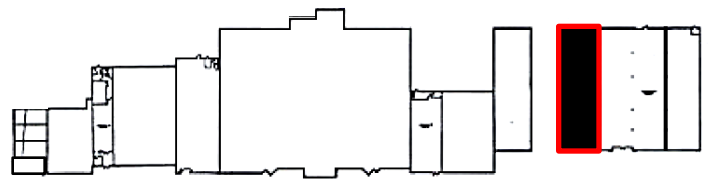
SENECA
REAL ESTATE GROUP



GreenTree Plaza, Libertyville, Illinois



- 7,000 sf Office Space
- Mix of private and cube space
- 2-ADA restrooms
- Kitchenette

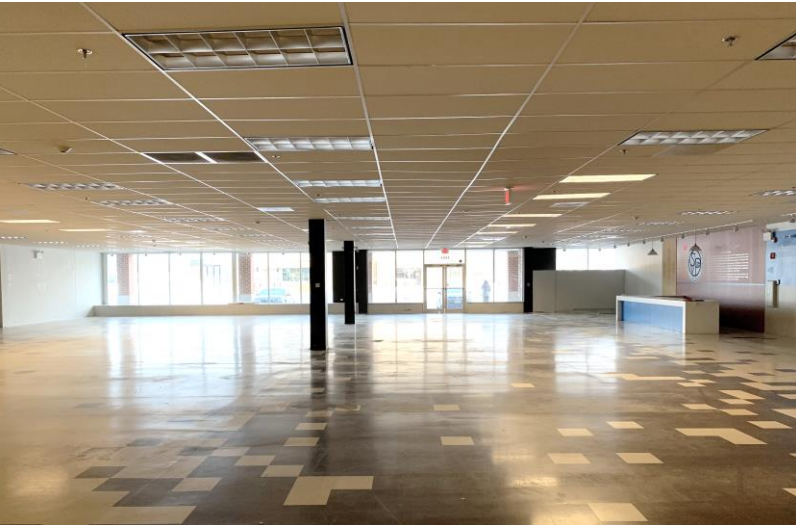


North Milwaukee Avenue

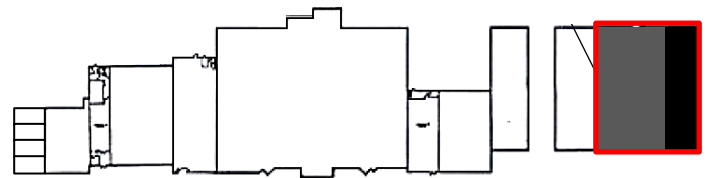
Key Plan
Not To Scale



GreenTree Plaza, Libertyville, Illinois



- 6,000 – 17,600 sf Open space
- One DID in each space
- 2-ADA multi-stall restrooms in larger space

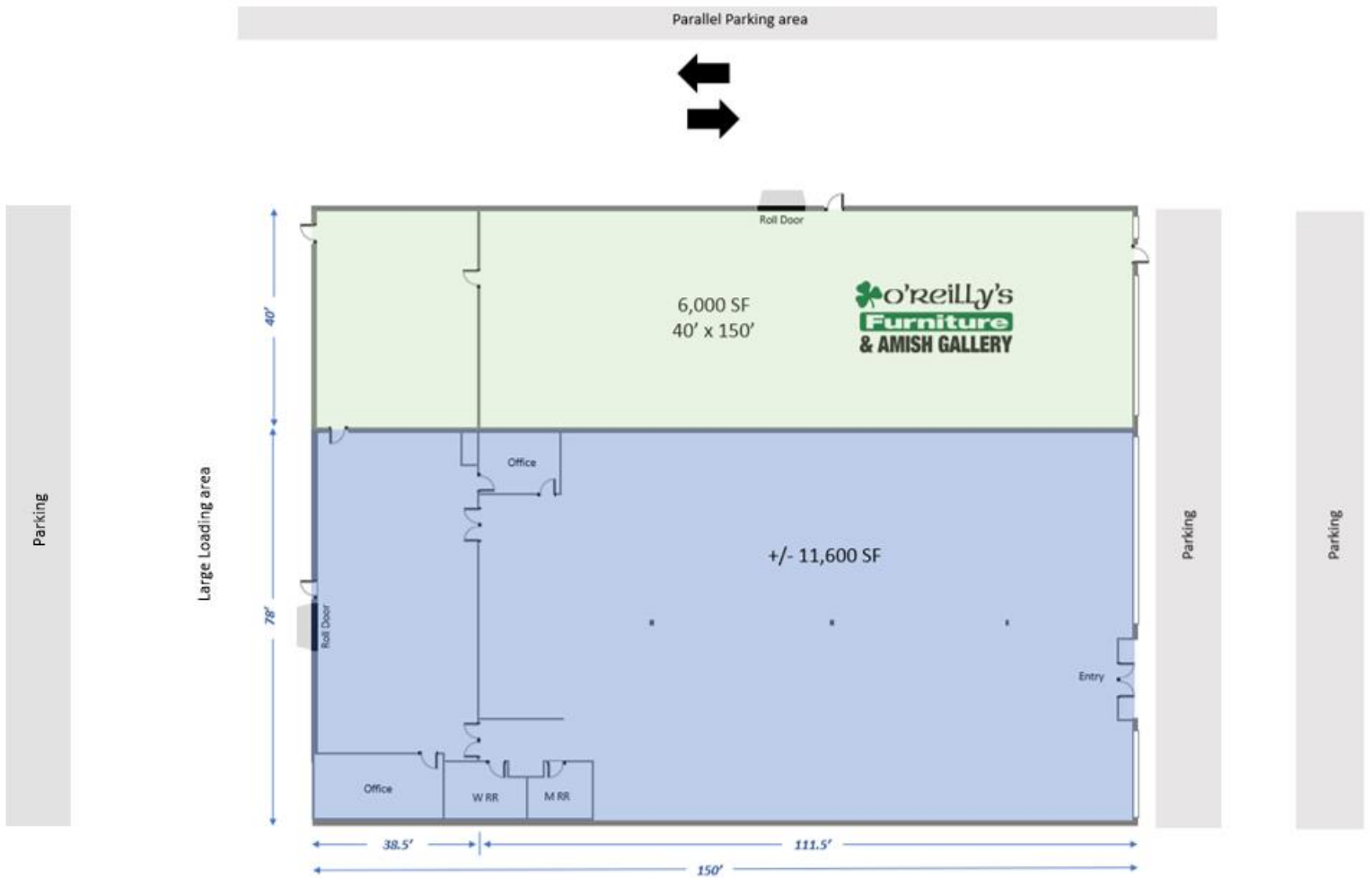


North Milwaukee Avenue

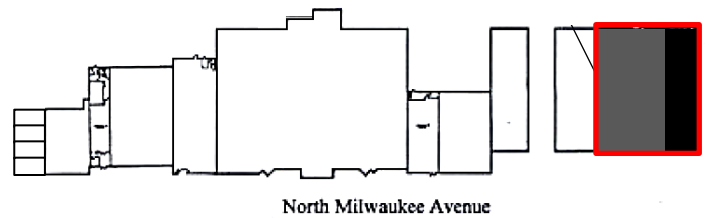
Key Plan
Not To Scale



GreenTree Plaza, Libertyville, Illinois



- 6,000 – 17,600 sf Open space
- One DID in each space
- 2-ADA multi-stall restrooms in larger space



Key Plan
Not To Scale