

BROOKING SQUARE

Point VILLAGE *Hope*



±12,842 SF CLASS-A RETAIL AVAILABLE
JUST DELIVERED

1000 Waterline Dr, Charleston, SC 29492

LEASING

Brooke Adee
Brooke.Eyrich@jll.com
+1 301 525 3237
@brookeadee__

Brian Connolly
Brian.Connolly@jll.com
+1 202 316 4846

A DEVELOPMENT BY

WOODFIELD
DEVELOPMENT


SIMPSON
HOUSING
invest.
build.
manage.

Meet Brooking Square Village

INSPIRED BY NATURE

Brooking Square Village is a premier mixed-use development that was recently delivered. Located within Charleston, South Carolina's 9,000 acre master-planned community, Point Hope, Brooking Square Village features 348 luxury residential units complemented by ±18,000 square feet of Class A retail space. The retail leasing opportunity is comprised of three ±6,000 square foot single-story buildings positioned at the gateway of the development. Each building offers flexible floor plans that can be customized and subdivided to meet the specific needs of various tenants and their operational demands.

The Residences at Brooking Square Village consist of one-, two-, and three-bedroom apartments as well as three-bedroom townhomes. These four-story buildings were designed with a coastal lifestyle in mind, featuring hues of shell white, sand, and ocean. The interiors are airy, spacious, and will be professionally maintained with the utmost care. The residents of Brooking Square Village will have access to exclusive on-site amenities including pickleball courts, a resort-style saltwater pool, outdoor lounges, an activity lawn, a fitness club, a dog park and pet spa, and much more.



1800 new homes coming soon - 1,000+ new residents

Del Webb
POINT HOPE

MUSC
Medical University
of South Carolina

RESIDENTIAL
POOL AMENITY

Clements Ridge Dr

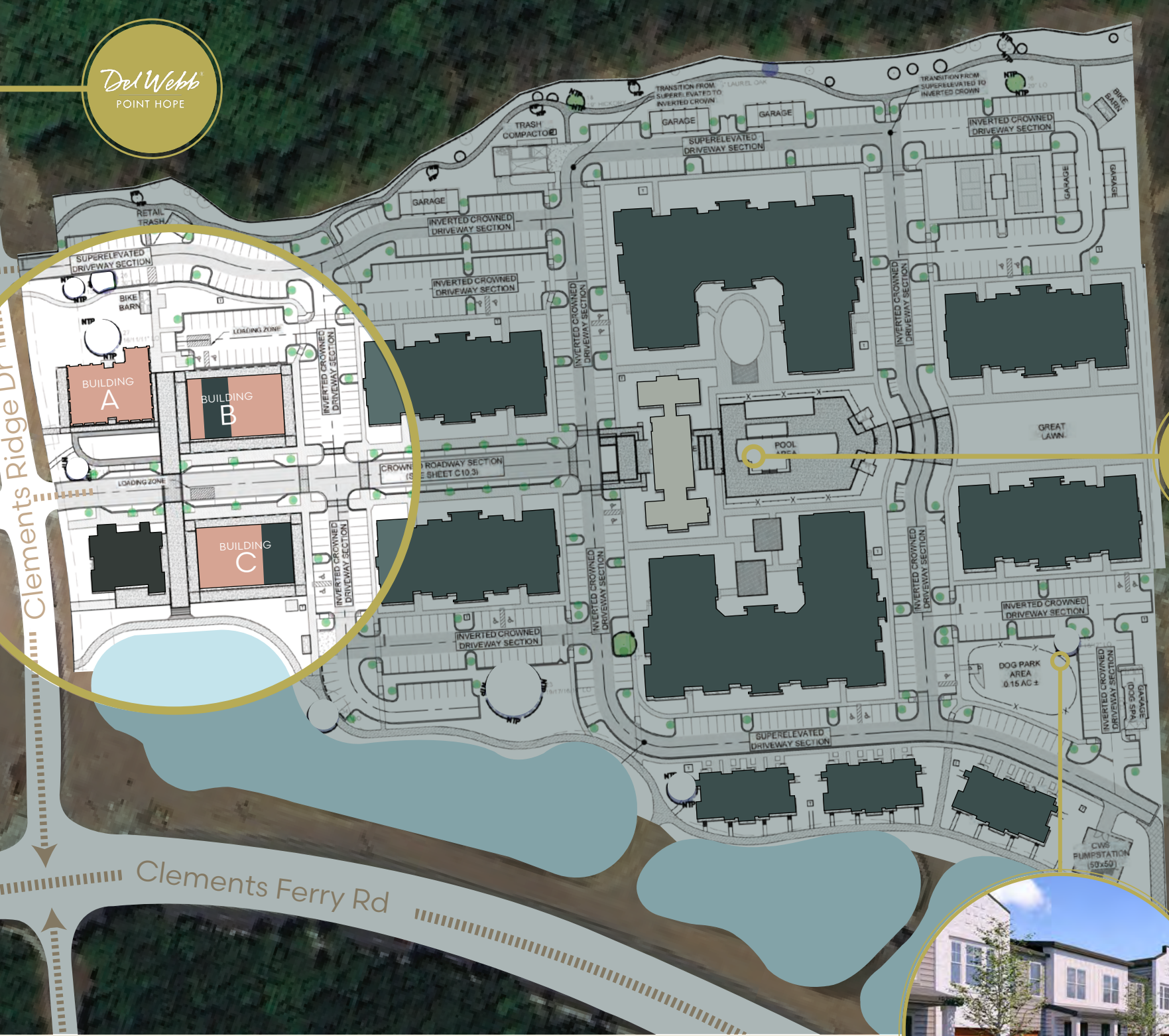
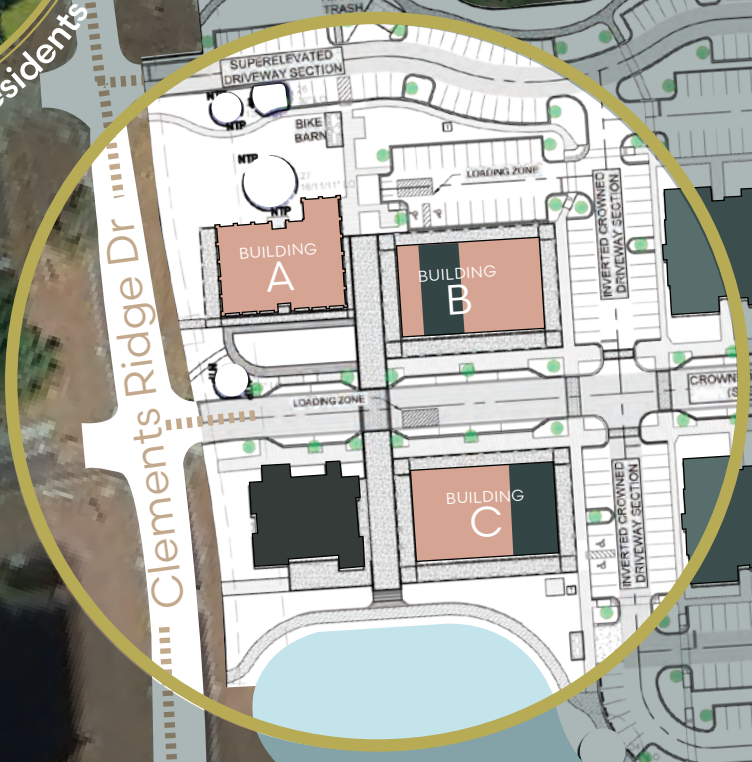
Clements Ferry Rd

The opportunity

SITE PLAN

A	Restaurant Opportunity	±1,500 – ±5,810 SF
B	Retail / Office Opportunity	±1,556 – ±3,125 SF
C	Retail / Office Opportunity	±1,673 – ±3,907 SF

● Vacant ● Leased ● Leasing Office ● Multifamily



Mixed-use destination

PROJECT OVERVIEW

±18,300 SF

TOTAL RETAIL / OFFICE

New construction, Class A space

Premier visibility at the gateway to the development

348 UNITS

TOTAL RESIDENTIAL

Luxury apartments and townhomes

High-end amenities with resort-style pool, pickleball courts, dog park, and more

5 MILES

TRAILS

Walking, biking, and hiking trails weave throughout the Point Hope development

13 MILES

DISTANCE

From Point Hope development to Charleston International Airport



Retail opportunities

BUILDING A

● 201 YUKON STREET

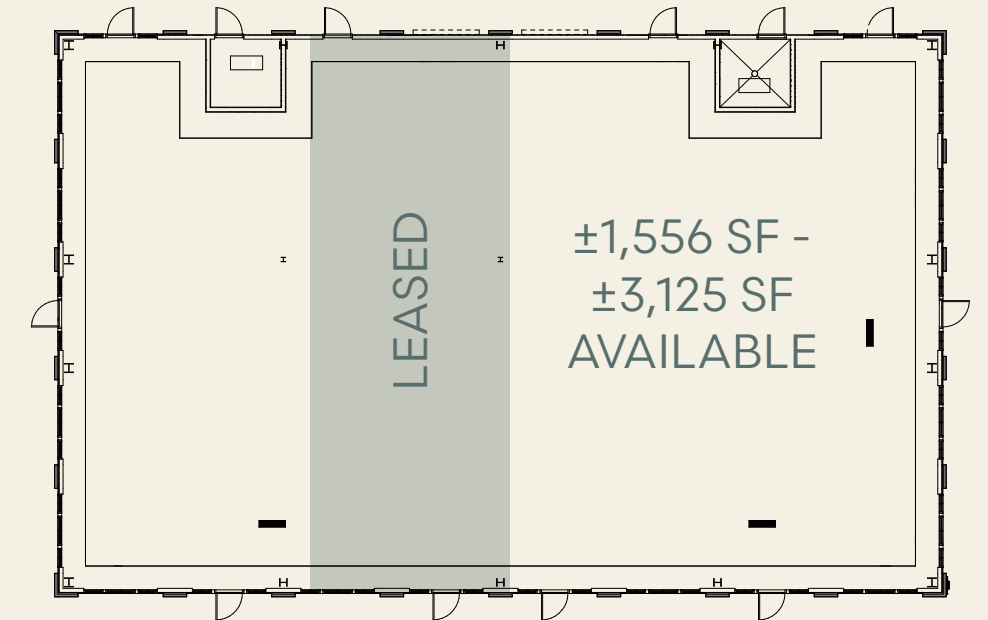
- 15'-6" ceiling height
- 12' tall windows
- Grease trap
- Restaurant opportunity



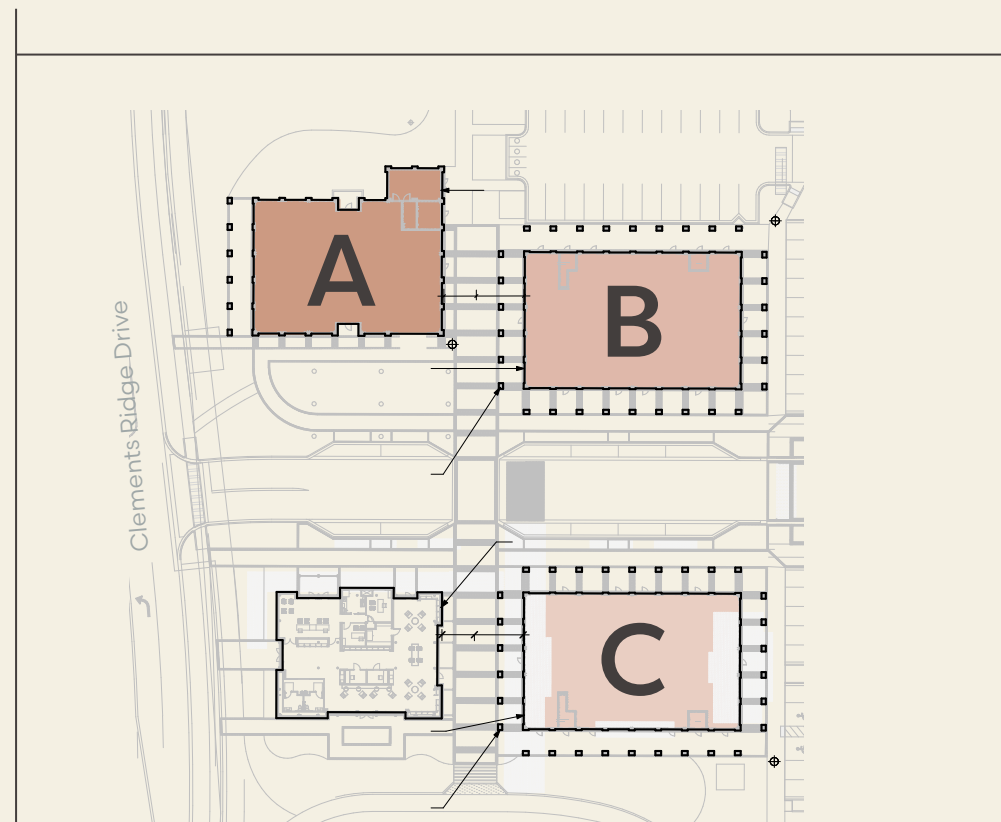
BUILDING B

● 305 REDTAIL LANE

- 17'-4" ceiling height
- 12' tall windows



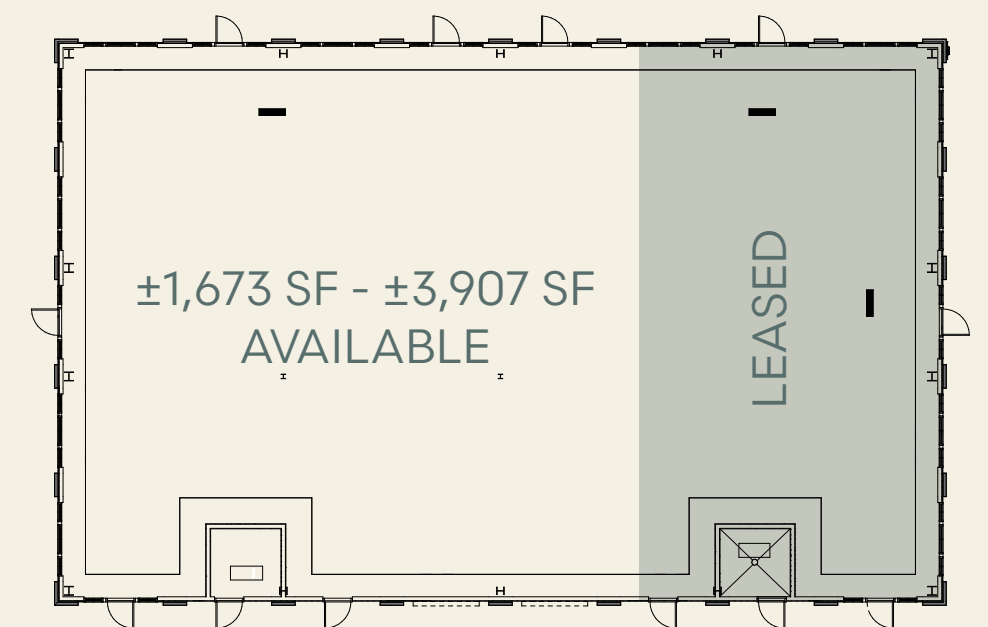
KEY PLAN



BUILDING C

● 311 REDTAIL LANE

- 17'-4" ceiling height
- 12' tall windows



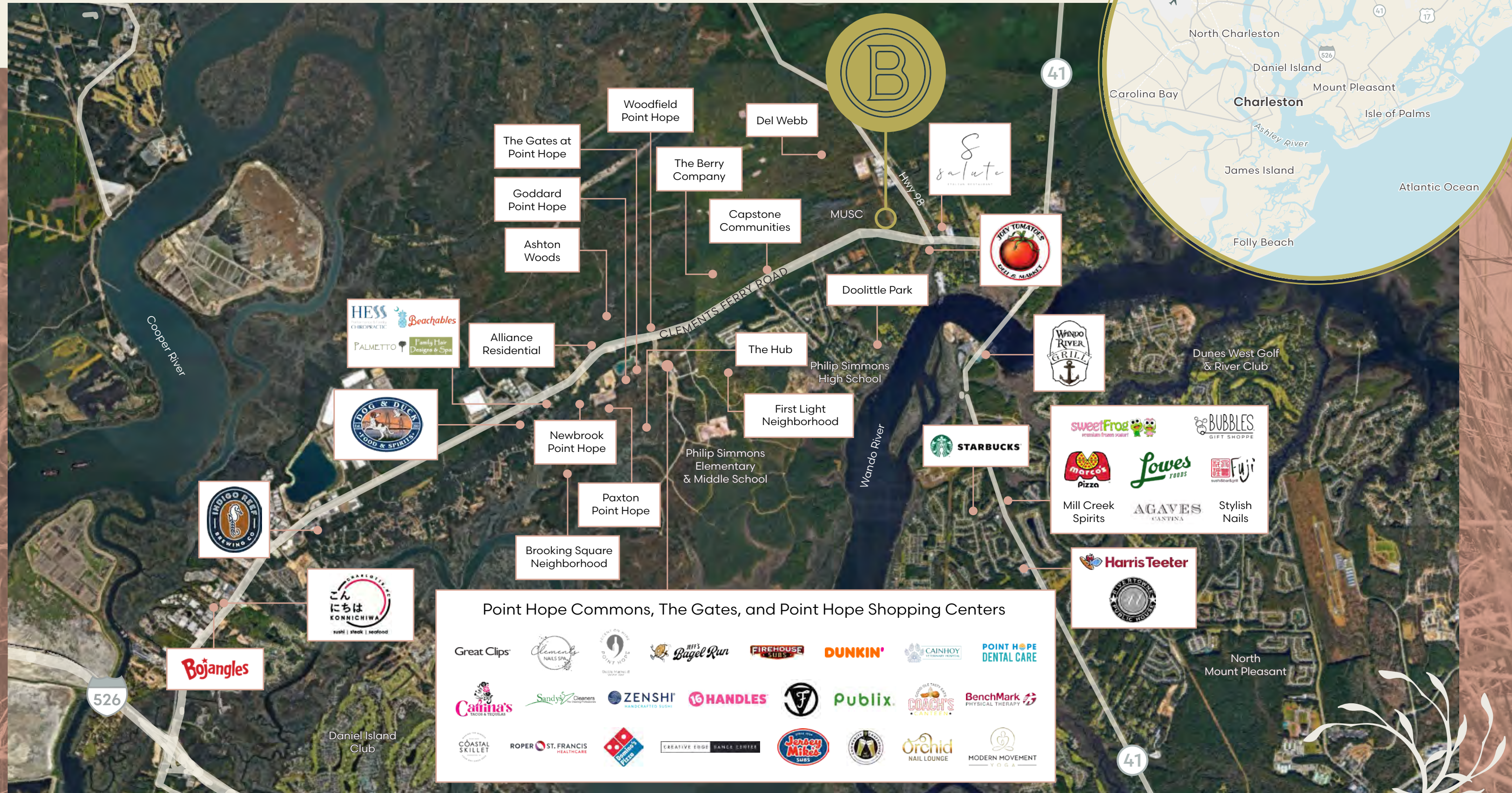
Photos

RETAIL/OFFICE BUILDINGS



Nearby retail and residential

LOCATION



Point Hope Commons, The Gates, and Point Hope Shopping Centers

Great Clips	Clements Nails Spa	Point Hope	Jeff's Bagel Run	Firehouse Subs	Dunkin'	Cainho	Point Hope Dental Care
Calma's	Sandys Cleaners	Zenshi Handcrafted Sushi	16 Handles	Publix	Coach's	BenchMark Physical Therapy	
Coastal Skillet	Roper St. Francis Healthcare	Domino's Pizza	Creative Edge Dance Center	Jersey Mike's Subs	Harris Teeter	Orchid Nail Lounge	Modern Movement Yoga

Residential boom

AREA GROWTH

The area is experiencing significant residential growth through existing homes, active construction, and proposed developments. This expansion will bring the community to approximately 12,800 total residential units at full buildout, reflecting strong market demand and establishing the area as a thriving residential destination.

8,000

UNITS

Existing Multifamily

3,000

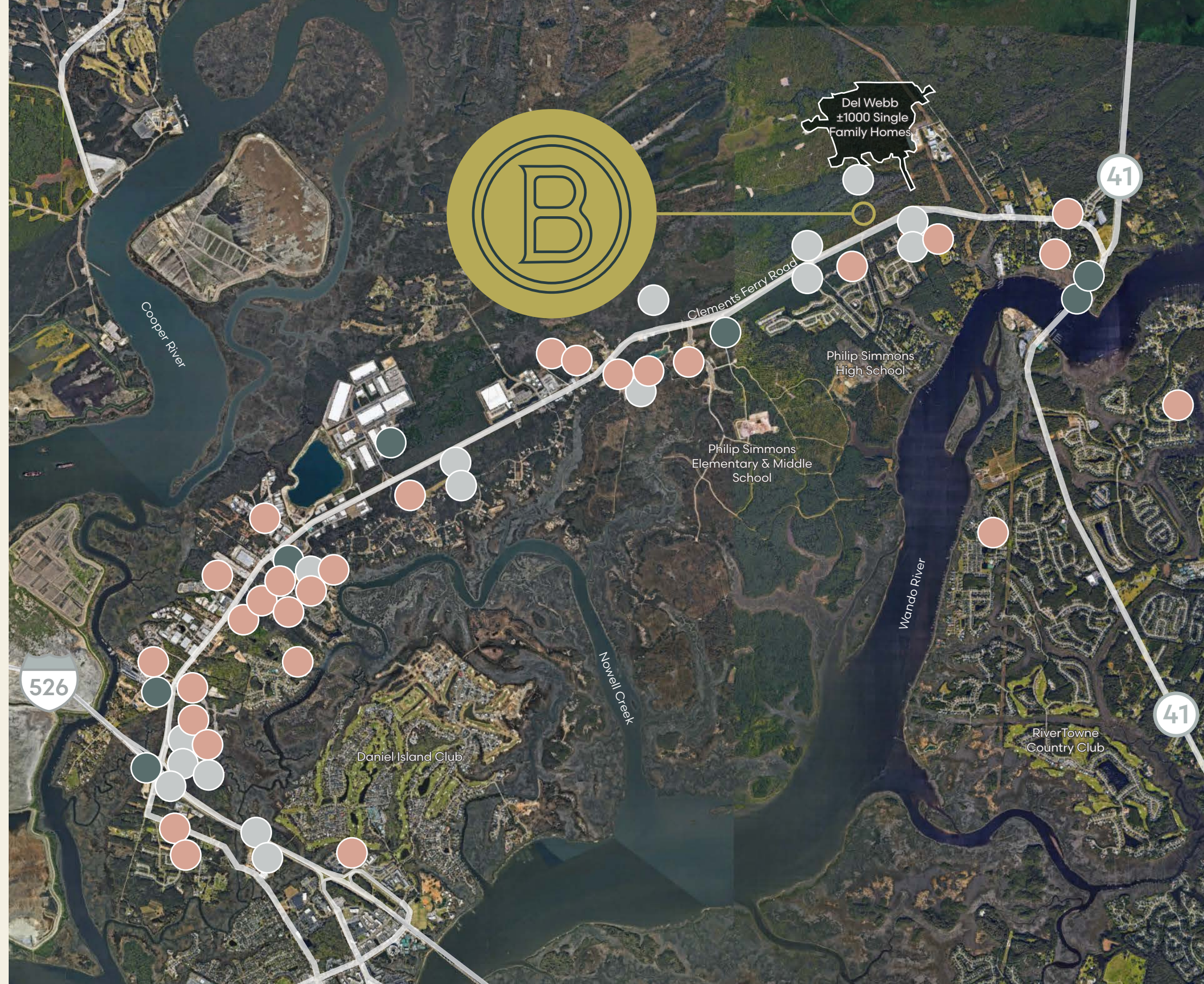
UNITS

Proposed Multifamily

1,800

UNITS

Under Construction



Existing

Proposed

Under Construction

BROOKING SQUARE

Point VILLAGE *Hope*

Brooke Adee

Brooke.Eyrich@jll.com

+1 301 525 3237

@brookeadee__

Brian Connolly

Brian.Connolly@jll.com

+1 202 316 4846



Although information has been obtained from sources deemed reliable, neither Owner nor JLL makes any guarantees, warranties or representations, express or implied, as to the completeness or accuracy as to the information contained herein. Any projections, opinions, assumptions or estimates used are for example only. There may be differences between projected and actual results, and those differences may be material. The Property may be withdrawn without notice. Neither Owner nor JLL accepts any liability for any loss or damage suffered by any party resulting from reliance on this information. If the recipient of this information has signed a confidentiality agreement regarding this matter, this information is subject to the terms of that agreement. © 2026 Jones Lang LaSalle IP, Inc. All rights reserved.