



THE CROWN
ESTATE

729 - 757 SQ FT OF STYLISH,
FULLY FITTED AND FURNISHED
OFFICE SPACE

15-17 HEDDON ST

15-17 HEDDON ST

STEP INTO CALM. STEP OUT INTO EVERYTHING

Tucked away just moments from Regent Street, 15-17 Heddon Street offers a fully managed workspace that blends a calm office environment with the energy of one of London's most recognised neighbourhoods.

Fully upgraded and thoughtfully fitted, the building provides stylish, self-contained floors that allow businesses to move in and thrive from day one.



15-17 HEDDON ST

TO THE HIGHEST OF STANDARDS



Fully refurbished, each of the 2nd and 3rd floors offer an open-plan workspace, breakout area, kitchenette and access to showers.





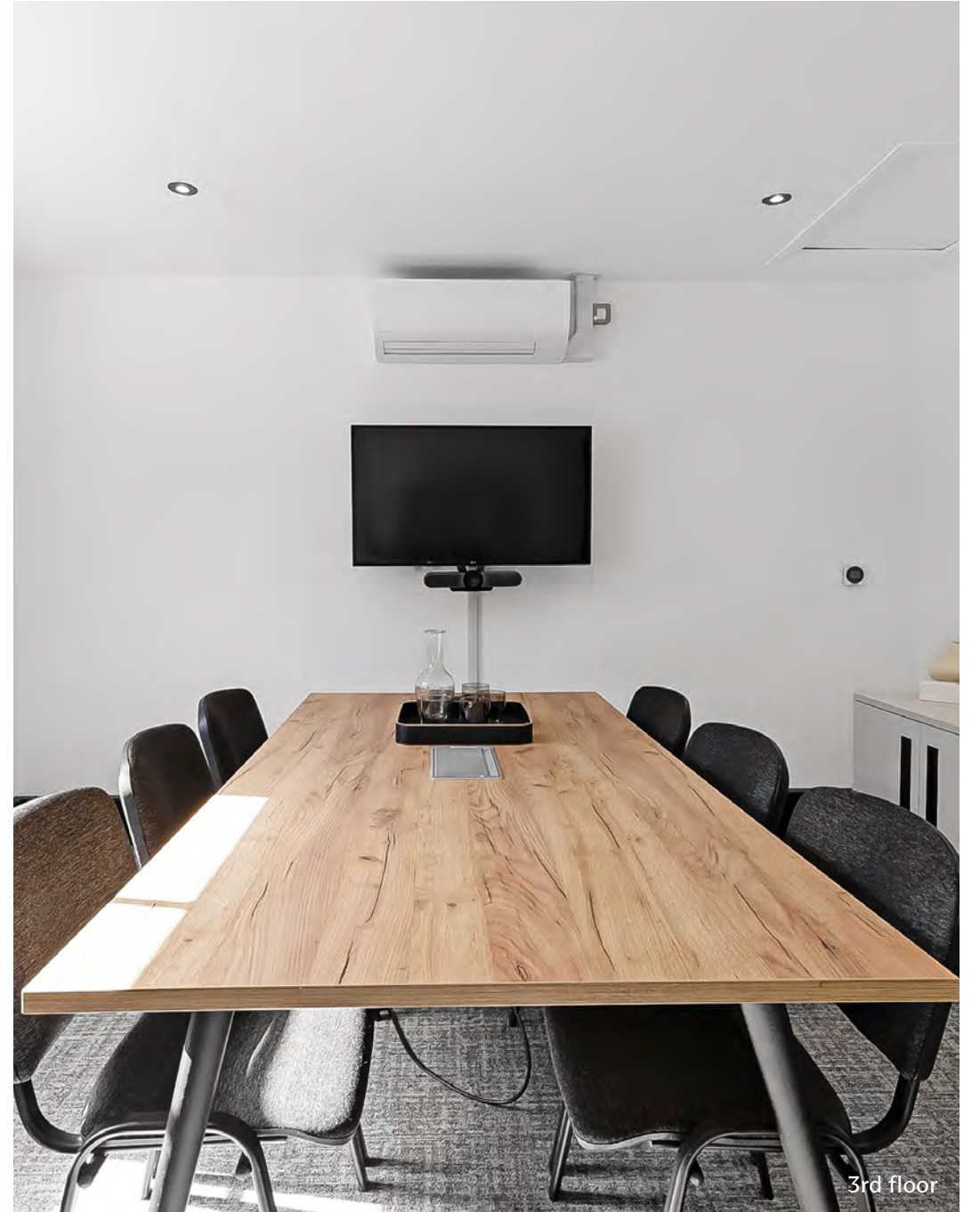
2nd floor



2nd floor



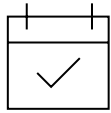
3rd floor



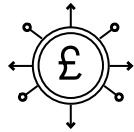
3rd floor

15-17 HEDDON ST

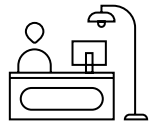
KEY FEATURES



FLEXIBLE
LEASE TERMS



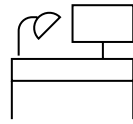
ALL-INCLUSIVE
SINGLE QUARTERLY
PAYMENT



MANAGED
WORKSPACE
SOLUTION



FULLY UPGRADED
OFFICES



FULLY FITTED AND
FURNISHED INDIVIDUAL
OFFICE FLOORS



FULL FIBRE
CONNECTIVITY



SHOWER
FACILITIES

WORKPLACES+

ACCESS TO EXCLUSIVE BUSINESS AMENITIES - SECONDS AWAY



As a 15-17 Heddton Street customer, you have access to our Community Hub at One Heddton Street, which includes exclusive discounts on meeting rooms, event space and roof terrace hire, as well as access to the members lounge, events and wellbeing programmes, plus personal offers and perks.



ACCESS TO
FITNESS AND
WELLBEING
CLASSES



EXCLUSIVE
DISCOUNTS
FOR BOOKABLE
MEETING ROOMS



24/7
SECURITY AND
MAINTENANCE
SUPPORT



BESPOKE PERKS
AND DISCOUNTS
AROUND THE
PORTFOLIO

15-17 HEDDON ST

THE NEIGHBOURHOOD



RESTAURANTS

- 01 Bob Bob Ricard
- 02 Café Murano
- 03 Dishoom
- 04 NOPI
- 05 Cecconi's Mayfair
- 06 Flat Iron
- 07 Brasserie Zedel
- 08 Fallow
- 09 Sketch
- 10 Bancone

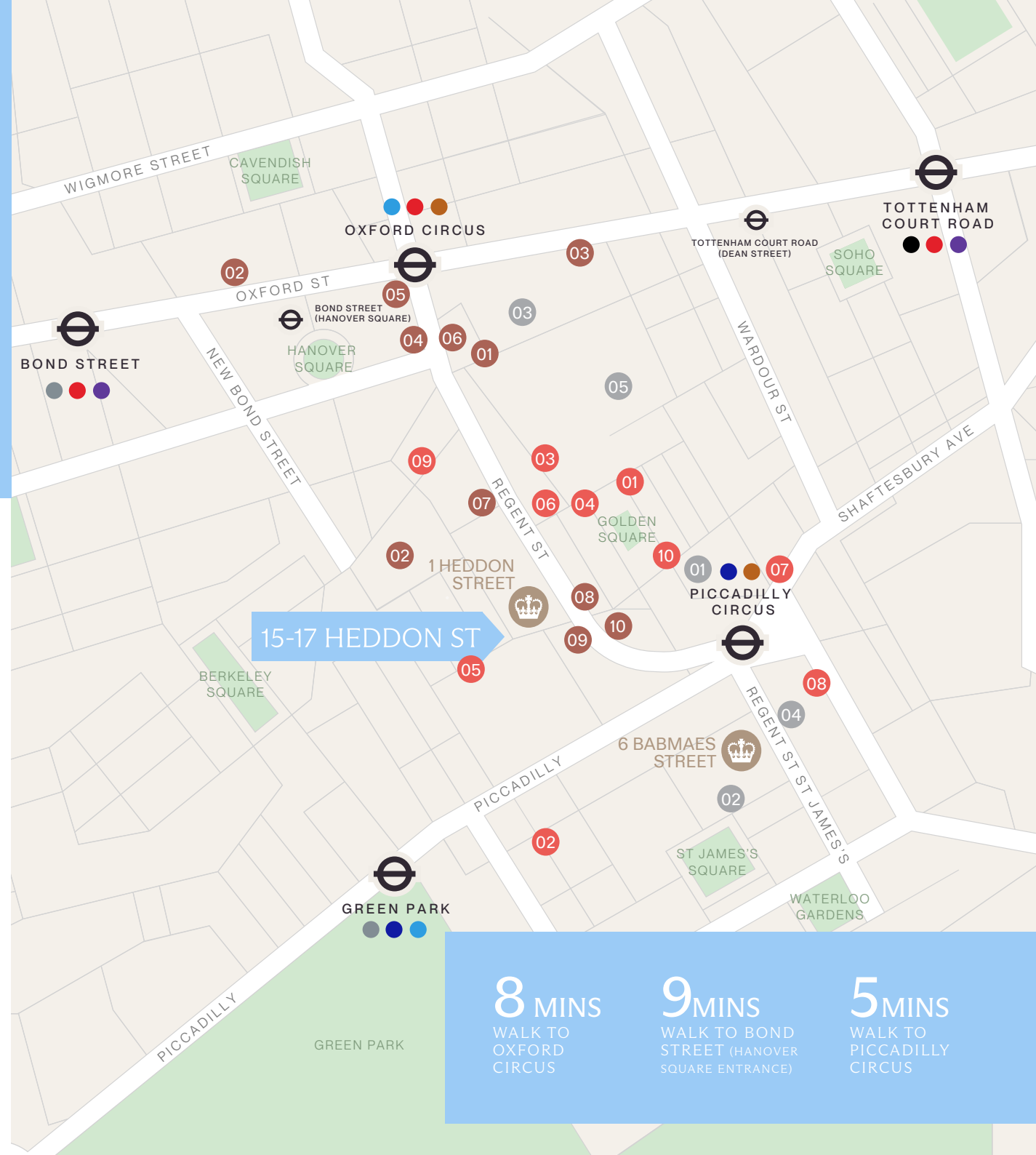
RETAIL

- 01 Liberty London
- 02 John Lewis
- 03 M&S
- 04 Apple
- 05 Nike
- 06 H&M
- 07 Gymshark
- 08 Zara
- 09 Uniqlo
- 10 Mulberry

05

LEISURE / WELLBEING

- 01 Third Space
- 02 Nordic Balance
- 03 Fitness First
- 04 PureGym
- 05 Topnotch Gyms Soho



8 MINS
WALK TO
OXFORD
CIRCUS

9 MINS
WALK TO BOND
STREET (HANOVER
SQUARE ENTRANCE)

5 MINS
WALK TO
PICCADILLY
CIRCUS

15-17 HEDDON ST

AVAILABILITY

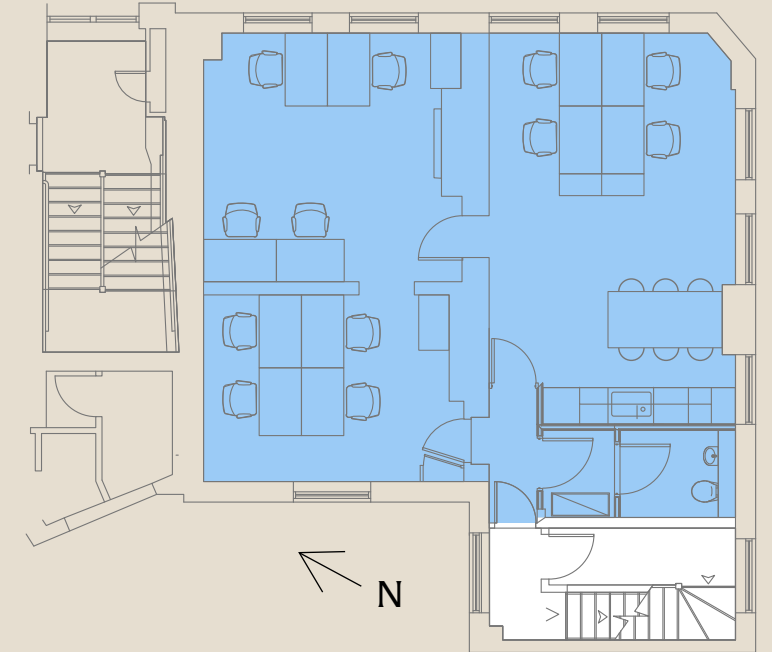


FLOOR	SQ FT	SQ M	DESKS	£ PSF	£ PCM
2ND	729	68	12	150	9,112.50
3RD	757	70	10	150	9,462.50

2ND FLOOR

729 SQ FT

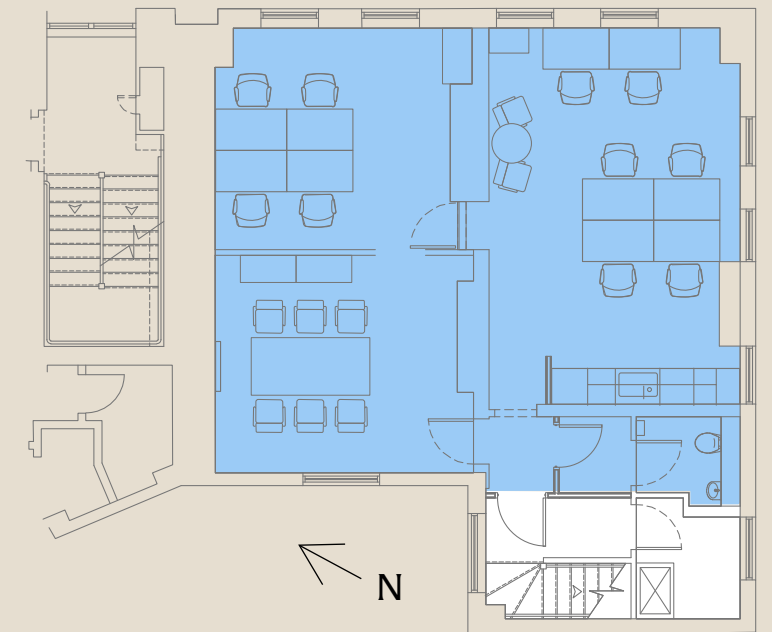
- OFFICE
- CORE



3RD FLOOR

757 SQ FT

- OFFICE
- CORE



ALL ENQUIRIES

KONTOR

BEN ORCHARD-SMITH

07557 988 115

ben@kontor.com

SAM DAVIS

07403 226 453

sam.davis@kontor.com

Workplaces | 

ALKA JOTANGIA

07826 946 336

alka.jotangia@thecrownestate.co.uk

GEORGE WALKER

07783 770 849

george.walker@thecrownestate.co.uk

Misrepresentation Act 1967 and declaration. Kontor for themselves and for the vendor/lessor as agents for the vendor/lessor gives notice that: 1. We provide the information contained in these particulars for guidance to intending purchasers, licensees or any other third parties and they are for your general information only and will be used at your own risk. 2. We will use all reasonable endeavours to ensure the accuracy of information, however, we do not guarantee or warrant the accuracy or completeness, factual correctness or reliability of any information in the particulars (especially as the information may have been obtained from third parties) and do not accept any liability for any errors or omission including any inaccuracies or typographical errors. 3. Any interested purchasers, licensees or any other third parties should not view the information in the particulars as statements or representations of fact and should satisfy themselves that the facts and specific details in the particulars are correct and accurate especially in relation to floor areas and other measurements through inspection. June 2026

Designed by: K4 Creative | k4creative.com



THE CROWN
ESTATE

