



ARCHER
REAL ESTATE

RETAIL+OFFICE SPACE

FOR SALE IN GROWING EAST TAMPA CORRIDOR

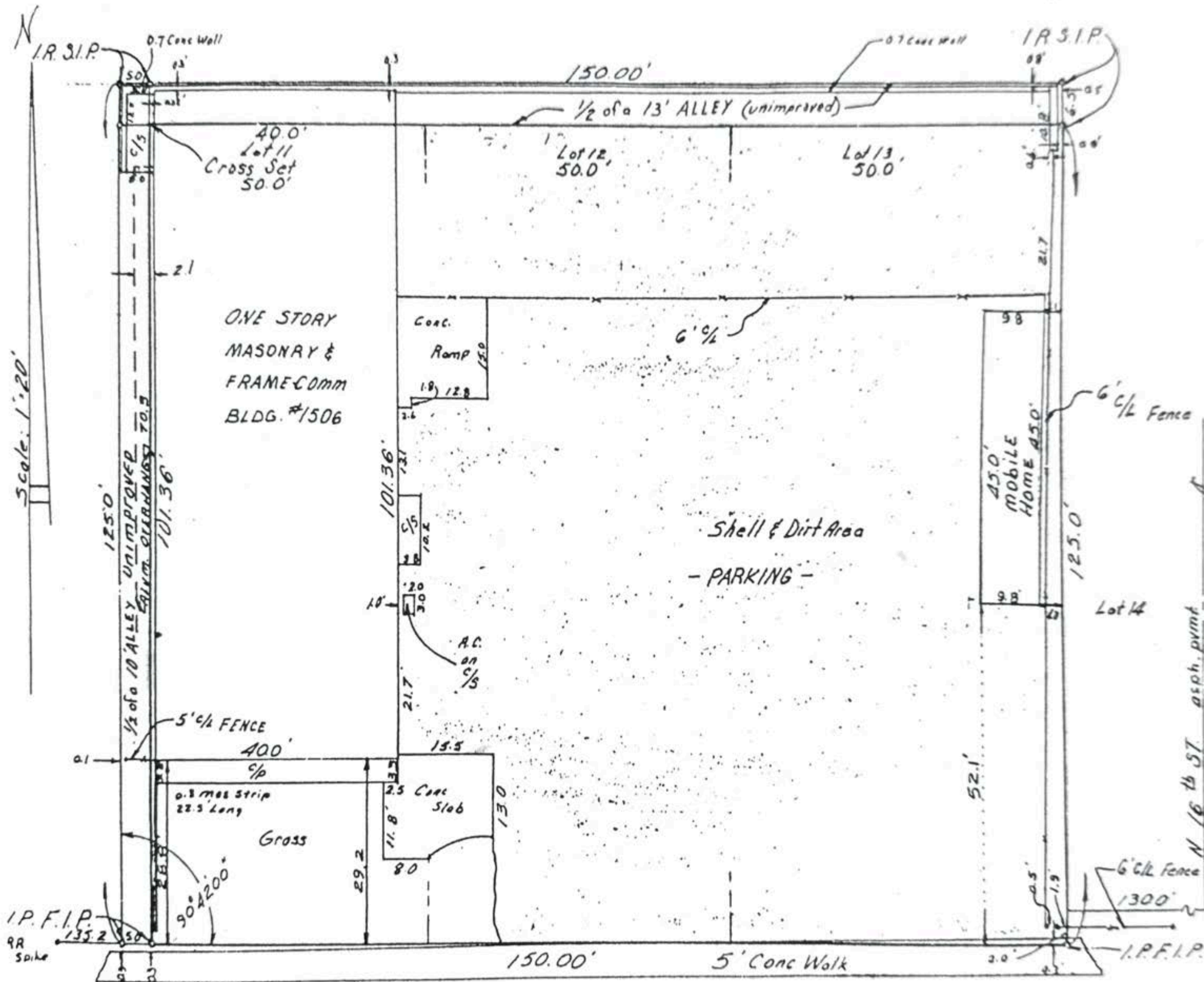
1506 E DR. MARTIN LUTHER KING JR BLVD | TAMPA, FL 33610

PROPERTY DETAILS

- 3,600 SF AVAILABLE
- ZONING: CI
- LOT SIZE: .45 ACRES
- LARGE SHOWROOM/EVENT SPACE WITH ROLL UP GARAGE DOOR
- ATTACHED SHED FOR EXTRA STORAGE
- AMPLE PARKING/OUTSIDE SPACE
- PRICING: CALL FOR DETAILS



SURVEY







DEMOGRAPHICS

POPULATION

1 MILE	18,275
3 MILES	128,744
5 MILES	308,692

AVG HH INCOME

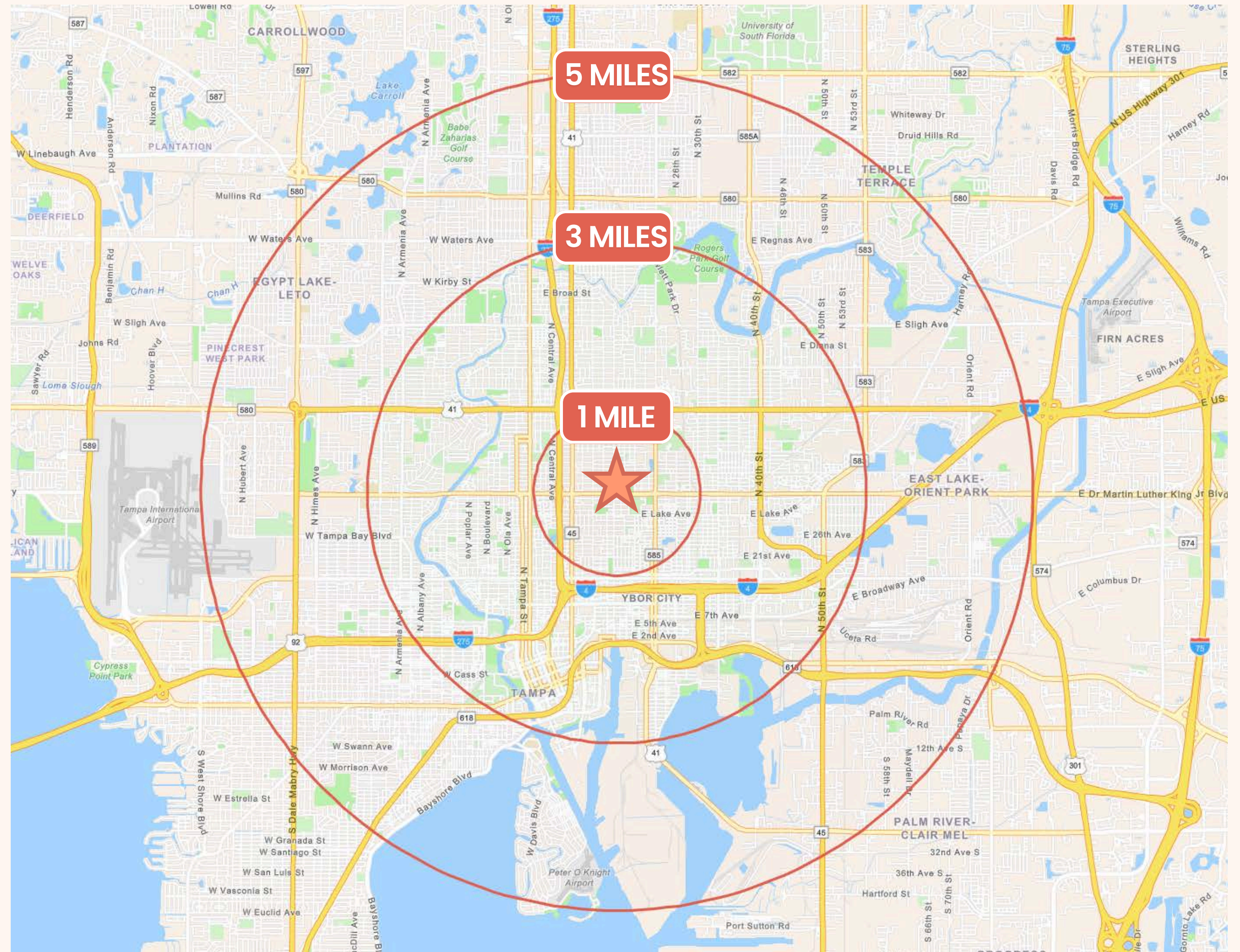
1 MILE	\$64,934
3 MILES	\$91,632
5 MILES	\$97,024

DAYTIME POPULATION

1 MILE	15,961
3 MILES	181,518
5 MILES	417,870

MEDIAN AGE

1 MILE	36.4
3 MILES	36.2
5 MILES	36.9





ARCHER
REAL ESTATE

HANNAH LYNN

SENIOR ASSOCIATE

HANNAH@ARCHERGROUPRE.COM

813-399-1904

WWW.ARCHERGROUPRE.COM | INFO@ARCHERGROUPRE.COM | 813.463.0163

This marketing material is intended for informational purposes only and does not constitute an offer or solicitation for the purchase or lease of real estate. All properties, prices, and availability are subject to change without notice. The information provided is believed to be accurate but is not guaranteed. Commercial real estate services are provided by Archer Real Estate, a licensed real estate brokerage.