

Office Space For Lease
±550 SF

373 B S Doheny Drive

Beverly Hills, 90212



2nd Floor Office Space For Lease

In the heart of Beverly Hills at the signalized corner of Olympic, with numerous walkable amenities and strong co-tenancy, 373 S Doheny Dr is a premiere project. This office space, Unit B features a skylight, with ample natural light, private restroom, hardwood floors and a great window line with views looking out to Doheny.



±550 SF



Great Visibility



**W Olympic Blvd &
S Doheny Dr**



Secure Parking



Move-in Ready



Natural Light





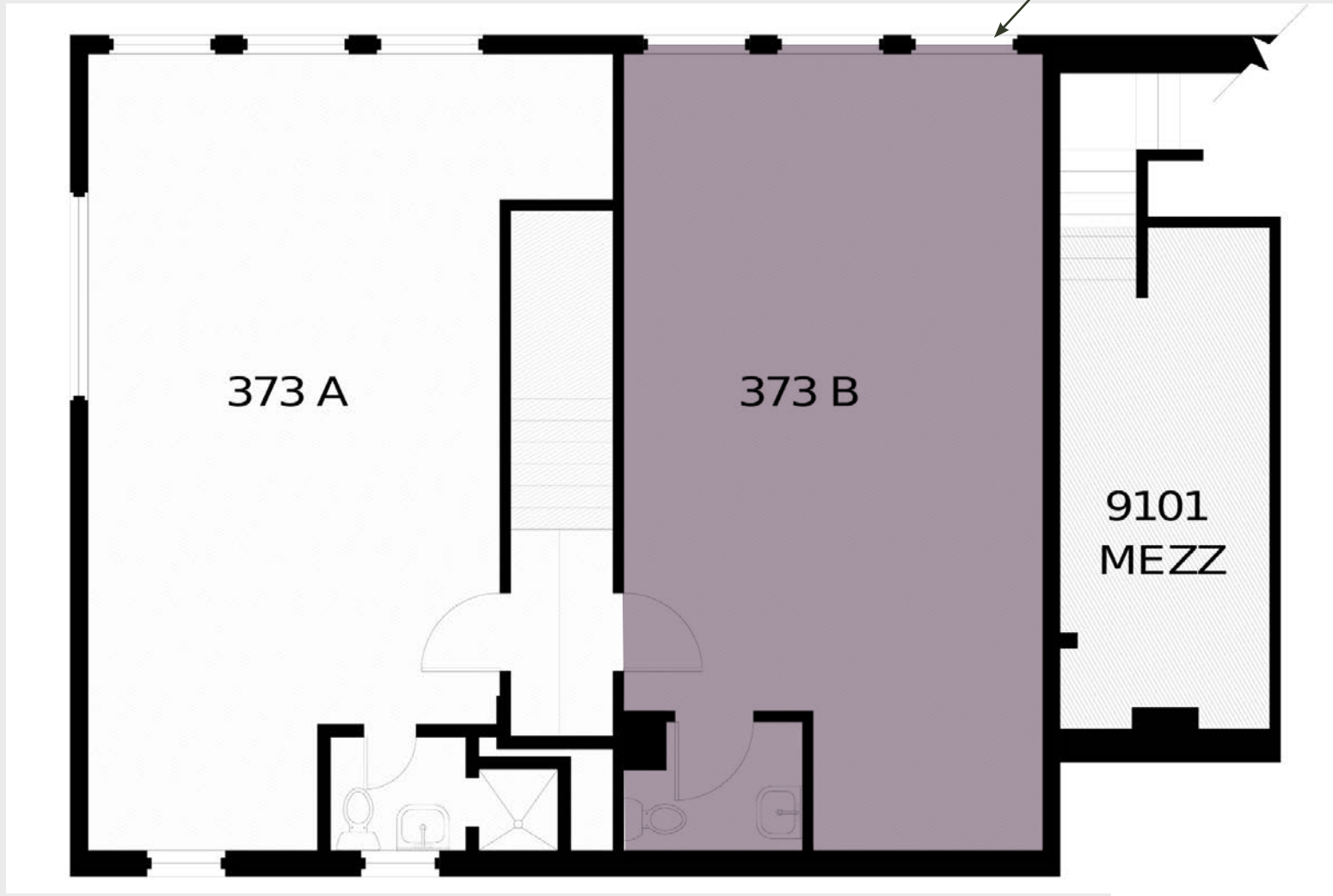
2nd Floor

Site Plan

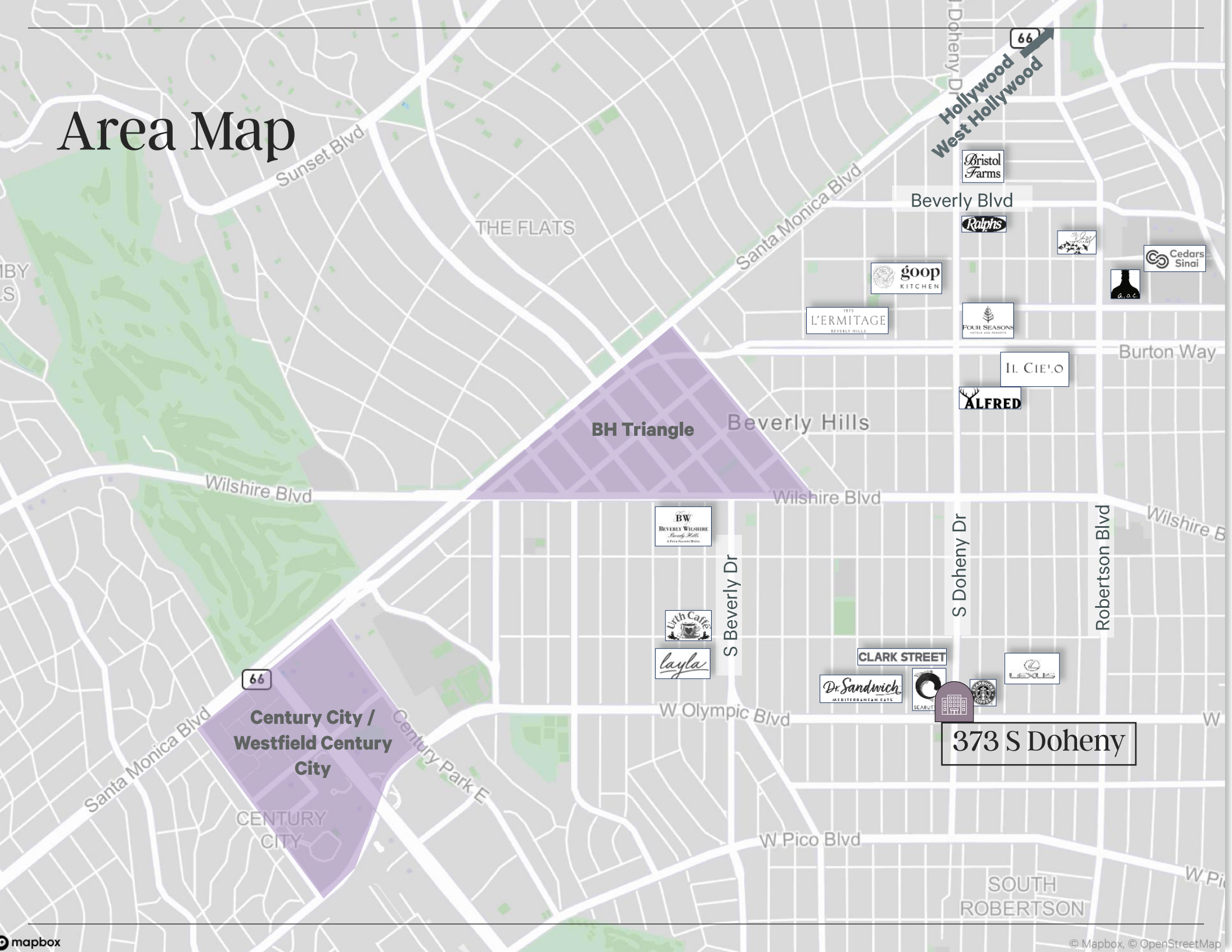
SUITE B

±550 SF

----- S Doheny Drive -----



Area Map



THE FLATS

BH Triangle

Beverly Hills

Century City /
Westfield Century
City

CENTURY
CITY

373 S Doheny

Office Space For Lease
±550 SF

BEVERLY HILLS

OFFICE SPACE AVAILABLE
FOR LEASE
Marisa Renfro
CBRE 310 550 2651



MING'S KITCHEN

BHC TOFU HOUSE

373 S Doheny Drive

MARISA RENFRO Vice President | Lic.#02178774 | +1 949 922 7278 | marisa.renfro@cbre.com

© 2026 CBRE, Inc. All rights reserved. This information has been obtained from sources believed reliable but has not been verified for accuracy or completeness. CBRE, Inc. makes no guarantee, representation or warranty and accepts no responsibility or liability as to the accuracy, completeness, or reliability of the information contained herein. You should conduct a careful, independent investigation of the property and verify all information. Any reliance on this information is solely at your own risk. CBRE and the CBRE logo are service marks of CBRE, Inc. All other marks displayed on this document are the property of their respective owners, and the use of such marks does not imply any affiliation with or endorsement of CBRE. Photos herein are the property of their respective owners. Use of these images without the express written consent of the owner is prohibited.

CBRE