

# PARK 8 | 290

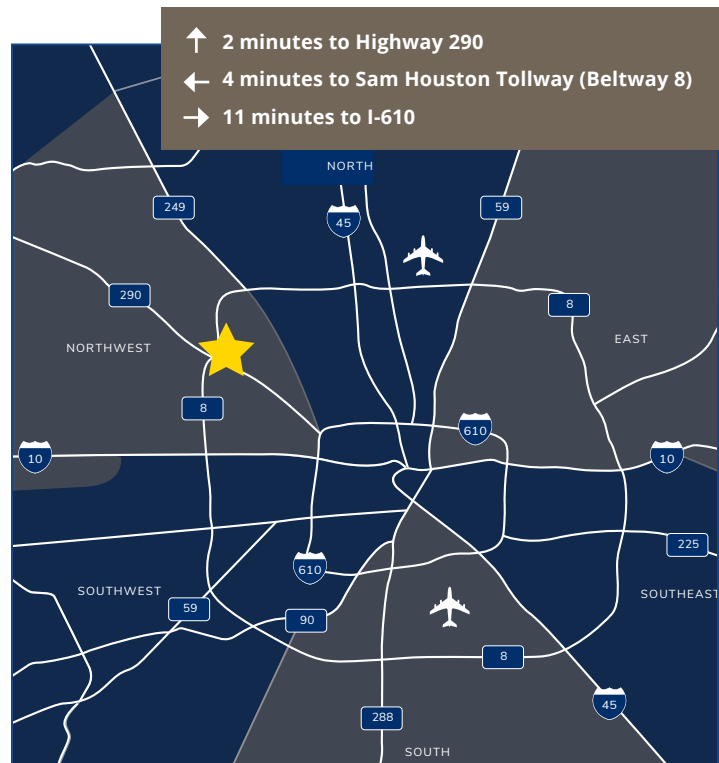
10055 Regal Row, Suite 100  
Houston, Texas 77040



**18,000 SF**  
Available

## PROPERTY HIGHLIGHTS

- 100% office (Landlord open to demo as necessary)
- 20' clear height
- Capability to utilize 6 dock-high doors
- 2 / 1,000 SF Parking Ratio
- < 2 Miles from Sam Houston Tollway (Beltway 8)
- < 2 Miles from US 290W
- 13 Miles from The Galleria
- 18 Miles from Houston CBD
- Located in the Harris County ETJ



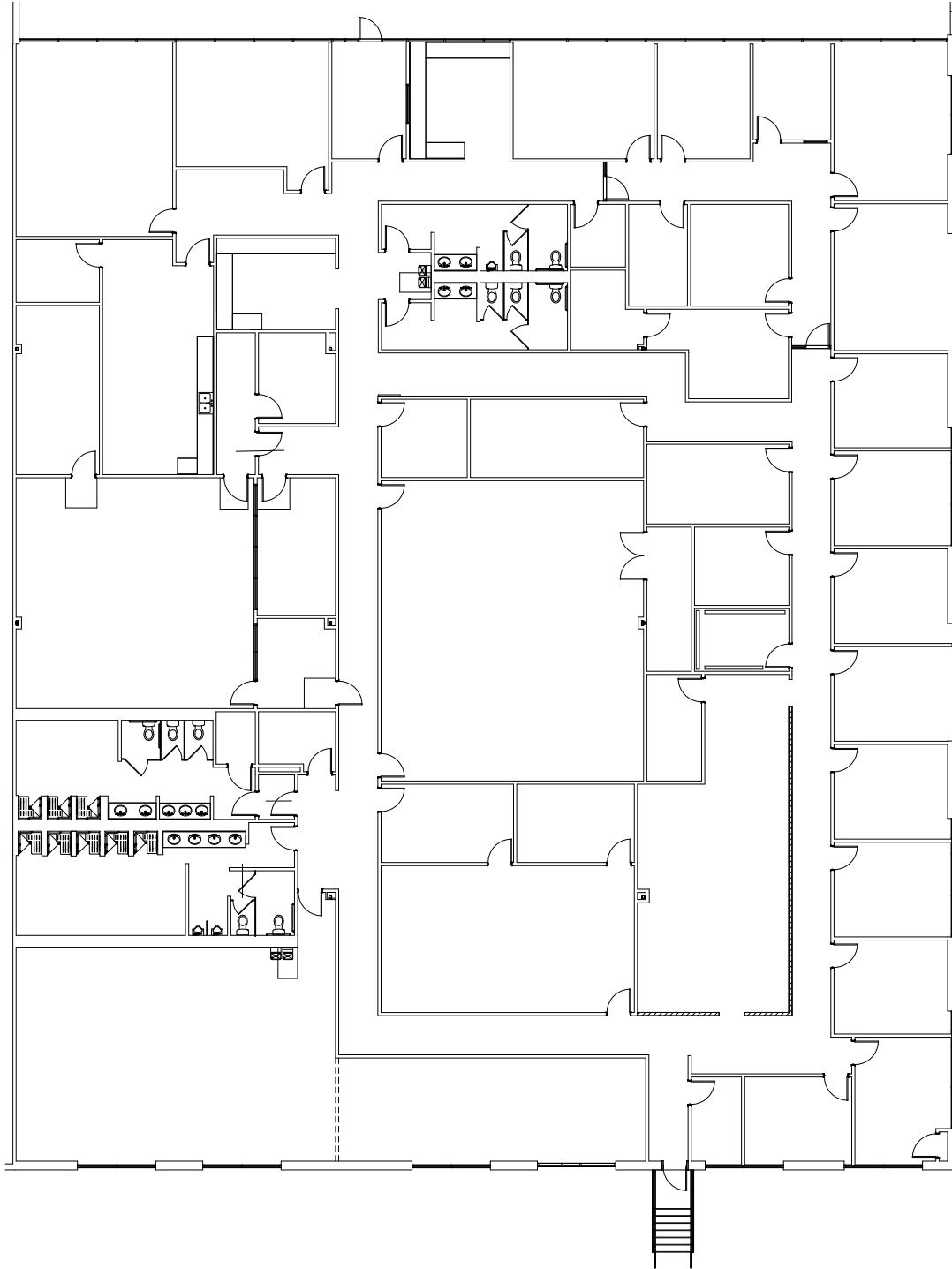
**FOR LEASING INFORMATION, PLEASE CONTACT:**  
MEG ZSCHAPPEL | 713.300.0284 | meg.zschappel@streamrealty.com  
WILSON KELSEY | 832.506.9044 | wilson.kelsey@streamrealty.com  
[www.streamrealty.com](http://www.streamrealty.com)



# FLOORPLAN

10055 Regal Row, Suite 100  
Houston, Texas 77040

18,000 SF  
Available

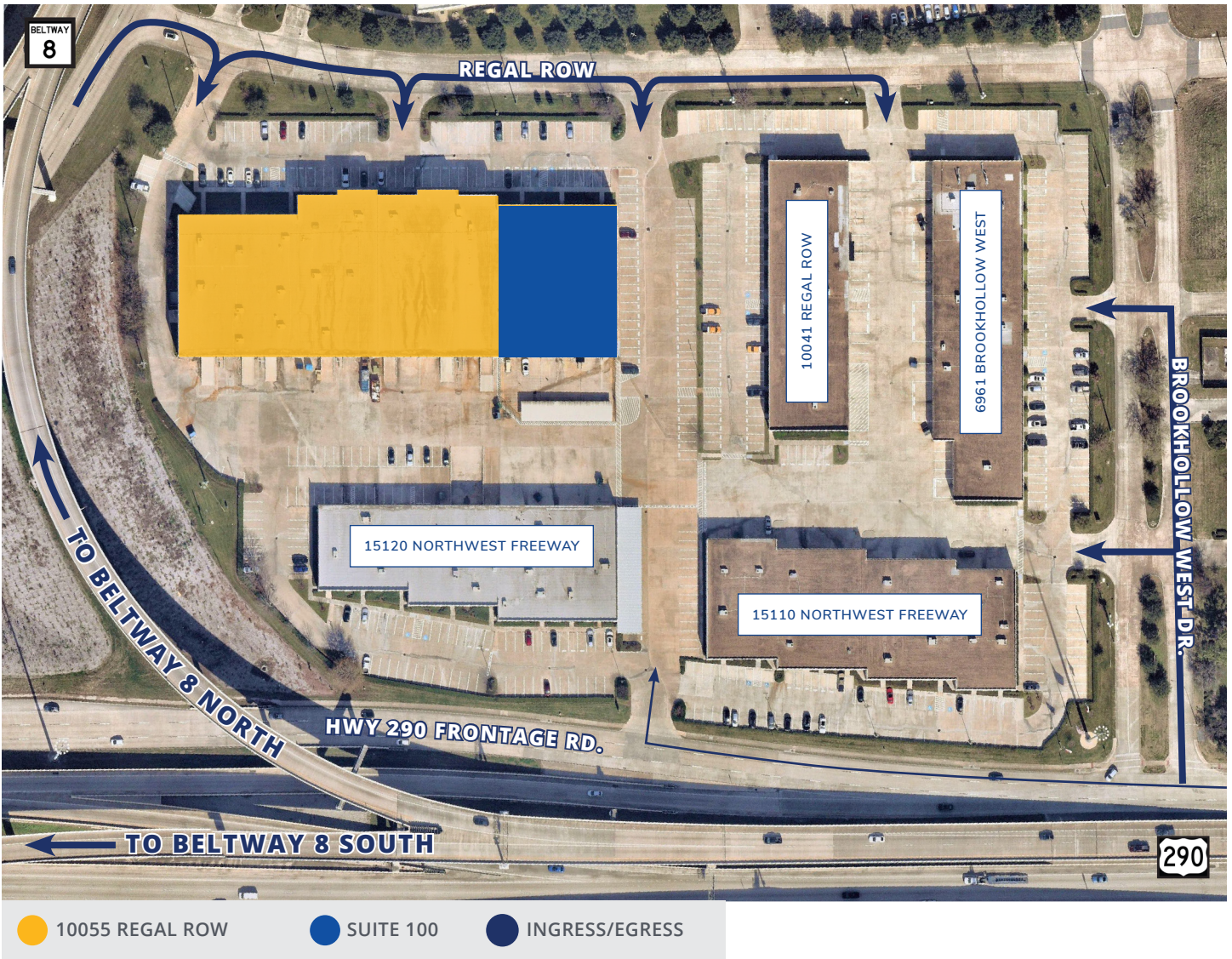


**FOR LEASING INFORMATION, PLEASE CONTACT:**  
MEG ZSCHAPPEL | 713.300.0284 | [meg.zschappel@streamrealty.com](mailto:meg.zschappel@streamrealty.com)  
WILSON KELSEY | 832.506.9044 | [wilson.kelsey@streamrealty.com](mailto:wilson.kelsey@streamrealty.com)  
[www.streamrealty.com](http://www.streamrealty.com)



# PARK OVERVIEW

10055 Regal Row, Suite 100  
Houston, Texas 77040



**FOR LEASING INFORMATION, PLEASE CONTACT:**  
MEG ZSCHAPPEL | 713.300.0284 | meg.zschappel@streamrealty.com  
WILSON KELSEY | 832.506.9044 | wilson.kelsey@streamrealty.com  
[www.streamrealty.com](http://www.streamrealty.com)



# AMENITIES

10055 Regal Row, Suite 100  
Houston, Texas 77040



**FOR LEASING INFORMATION, PLEASE CONTACT:**  
MEG ZSCHAPPEL | 713.300.0284 | meg.zschappel@streamrealty.com  
WILSON KELSEY | 832.506.9044 | wilson.kelsey@streamrealty.com  
[www.streamrealty.com](http://www.streamrealty.com)

