



EXCLUSIVE LISTING MEDICAL OFFICE CONDO FOR SALE OR LEASE

(856) 985-9522 • ROSECOMMERCIAL.COM

**Willow Ridge Executive Park
750 Route 73 South, Suite 107 & 108, Evesham, NJ**



Property Description:

Available:

Condo Fees:

Taxes:

Lease Rate:

Sale Price:

Comments:

One Story Medical Office Condo

2,700 +/-SF

\$ 410.17 / Month

\$12,417.38 (2025)

\$24.00 /SF Plus Utilities

\$472,000.00

- Conveniently located on Route 73
- Updated office with waiting/reception, 4 exam rooms and kitchenette and one private entry office with bathroom.
- Many nearby amenities including, restaurants, retail and offices
- Close proximity to Virtua Hospital, Cooper Hospital and Jefferson Healthcare
- Situated minutes from Route 70, I-295

Michelle Marinello (Ext. 28)

mmarinello@rosecommercial.com

(856) 985-9522

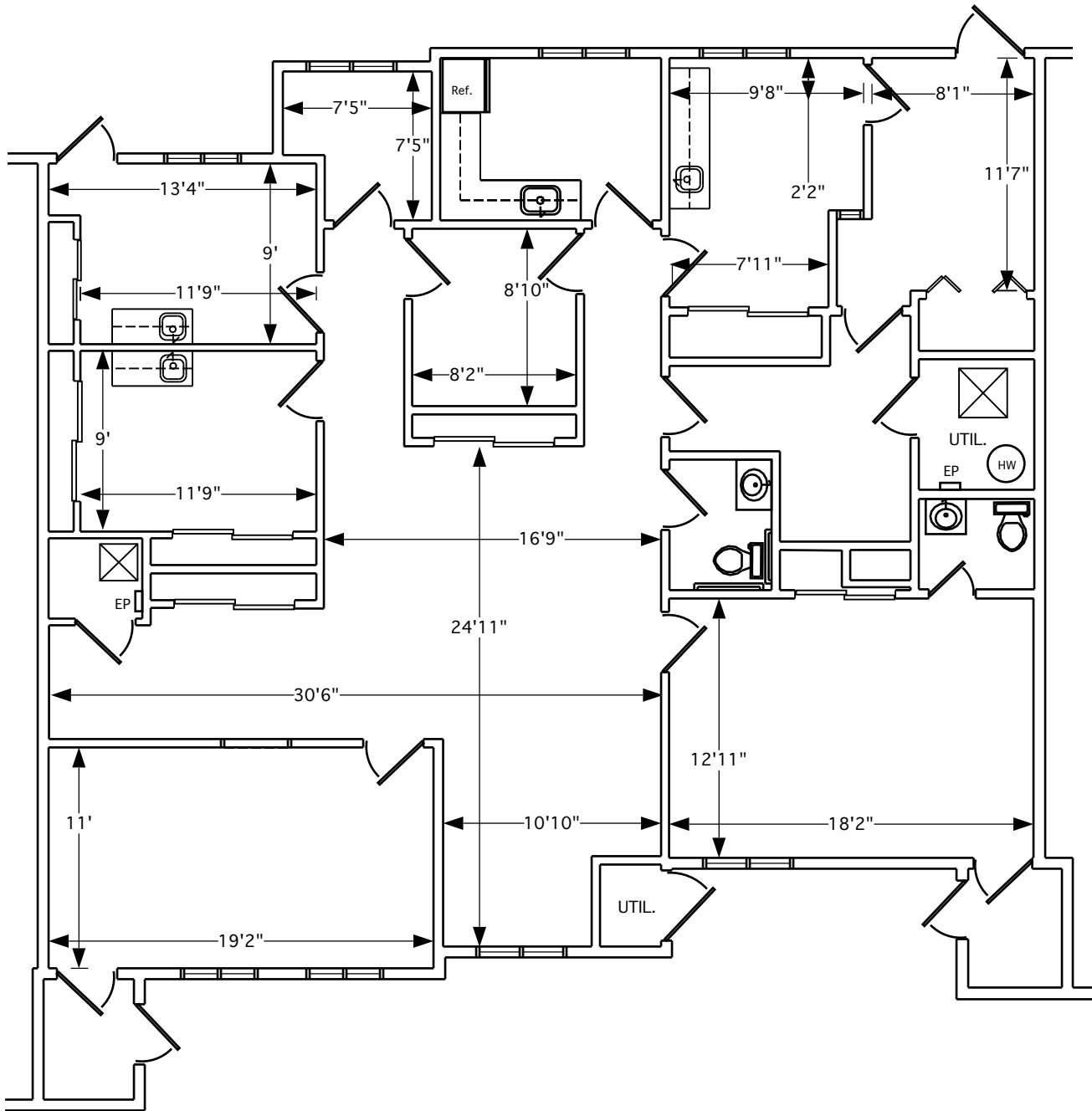
Adam Rose (Ext. 22)

arose@rosecommercial.com

(856) 985-9522

Rose Commercial Real Estate is a full service commercial real estate firm, specializing in all facets of the industry ~ representing buyers and sellers, landlords and tenants as well as investors both big and small. Key to our growth is experience combined with in depth understanding of the South Jersey real estate market. But that alone is only a part of the comprehensive service we provide clients. With our unique **CIRCLES FOR SUCCESS** and start-to-finish commitment, we make things happen.

FLOOR PLANS



SUITE 107-108



EXCLUSIVE LISTING MEDICAL OFFICE CONDO FOR SALE OR LEASE

(856) 985-9522 • ROSECOMMERCIAL.COM



651 Route 73 North, Suite 111 • Marlton, NJ 08053 • Phone: (856) 985-9522 • Fax: (856) 985-9488

ROSECOMMERCIAL.COM