



For Sublease

2345 Pembroke Avenue

Hoffman Estates, IL 60169

Square Feet:

22,528 sf (Entire Building)

Expiration Date:

December 31, 2027

Asking Rent:

Negotiable

Occupancy:

60-90 Days

Parking:

60 Surface Spaces or 3.9/1,000 sf

Property Highlights

- Former Video Game HQ/Video Game Engineering Development Space
- Exceptional tollway exposure
- Immediate I-90 access at Barrington Rd interchange
- 2.3-acre site with ample parking
- The building has an expansive computer room and loading dock
- 24-hour tenant access
- Shopping and restaurants nearby

For information, please contact:

John Gaines

Vice President

1 312 612 5976

john.gaines@colliers.com

Kevin Schultz

Vice President

1 312 612 5975

kevin.schultz@colliers.com

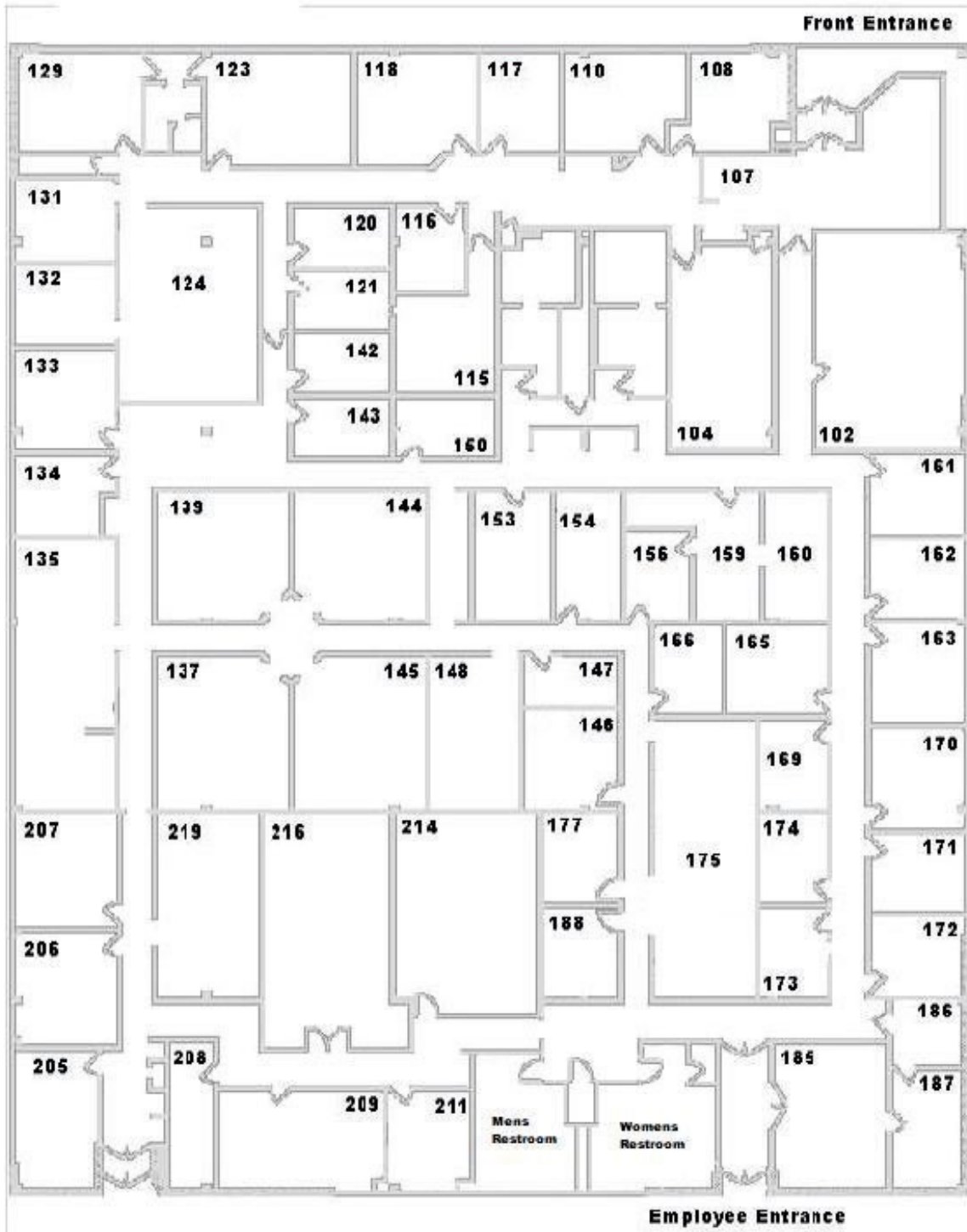
Joe Zona

Executive Vice President

1 312 612 5974

joe.zona@colliers.com

Floor Plan



Building Photos



Area Map

