

MEDICAL OFFICE SUITES FOR LEASE



PHOTO SOURCE: COSTAR

CARY MEDICAL PAVILION

ATLAS  STARK

# Highlights

**101-105 SW CARY PARKWAY  
CARY, NC 27511**

**BUILDING: 101**

**105**

<b>SUITE</b>	101	30	202	300
<b>AVAILABILITY</b>	18,022 SF	2,767 SF	5,719 SF	3,536 SF
<b>RENTAL RATE</b>	\$24.00/SF NNN	\$24.00/SF NNN	\$24.00/SF NNN	\$24.00/SF NNN
<b>TICAM (estimate)</b>	\$9.50/SF	\$9.50/SF	\$9.50/SF	\$9.50/SF

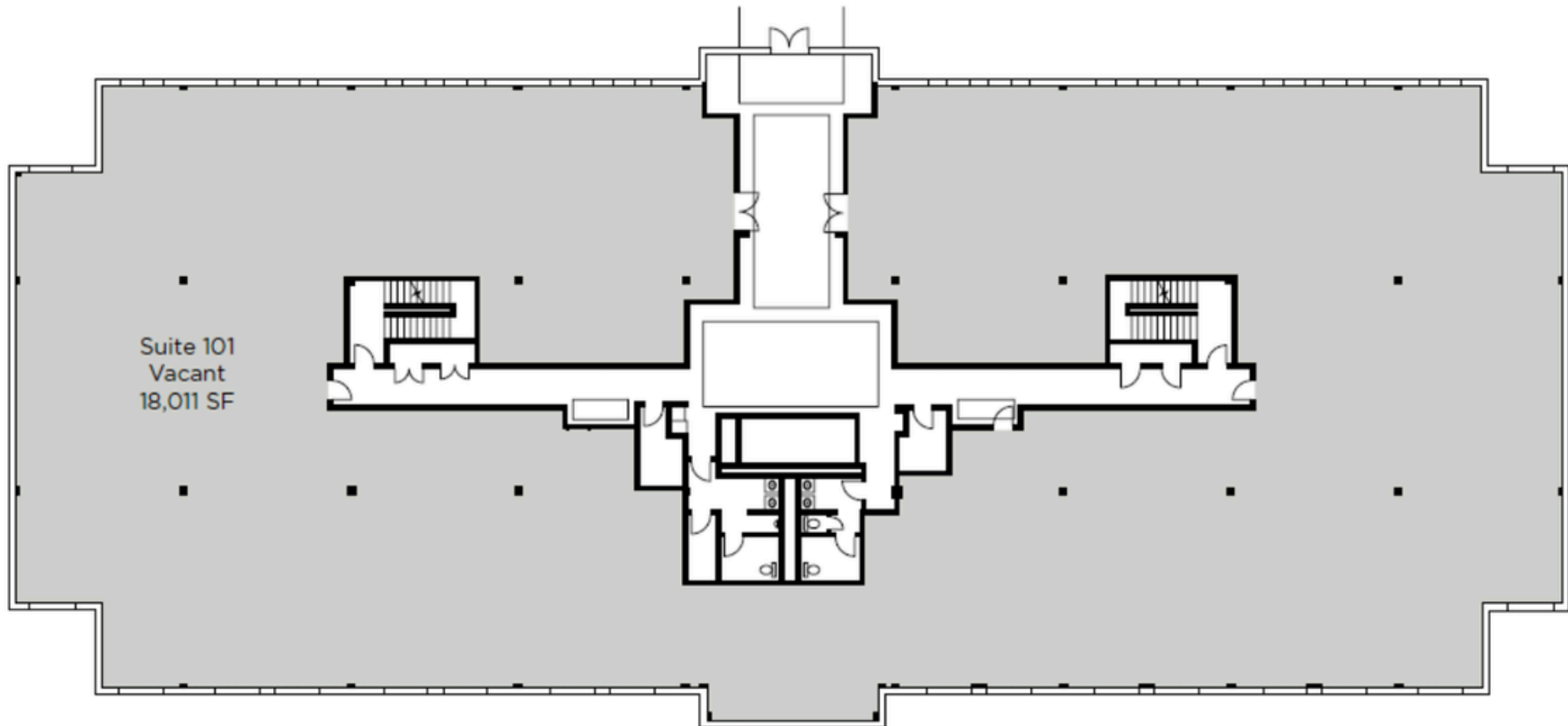


Building 101

# BUILDING 101 - SUITE 101

101 SW CARY PARKWAY CARY NC 27611

18,011 SF

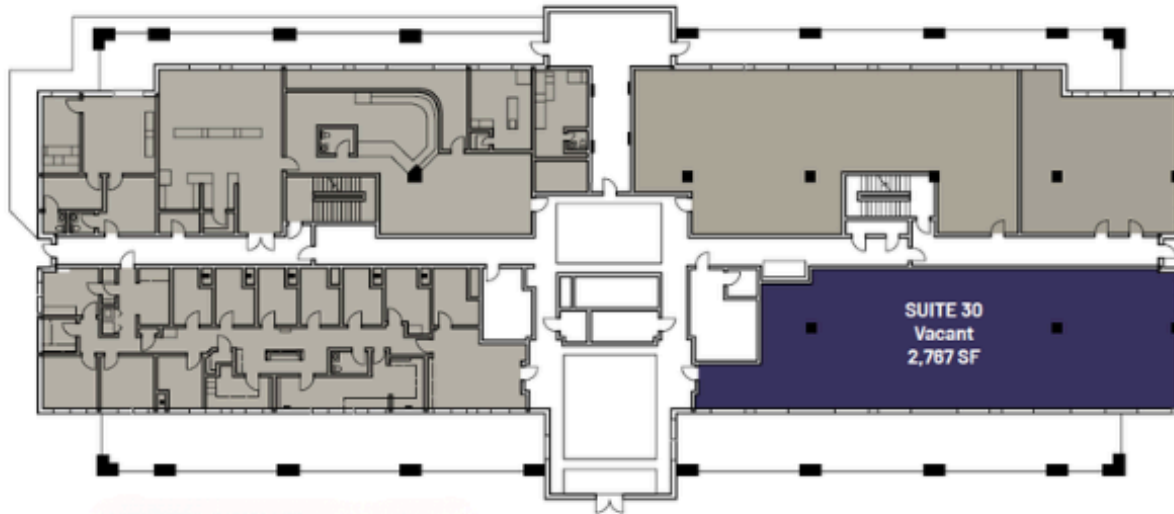


[Click for a virtual tour.](#)

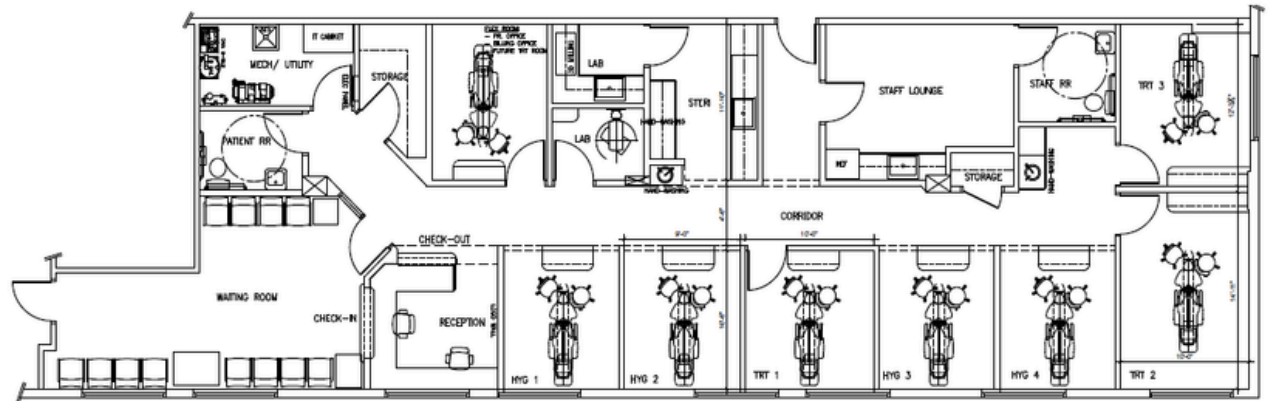
# BUILDING 101 - SUITE 30

101 SW CARY PARKWAY CARY NC 27611

2,787 SF



Test Fit

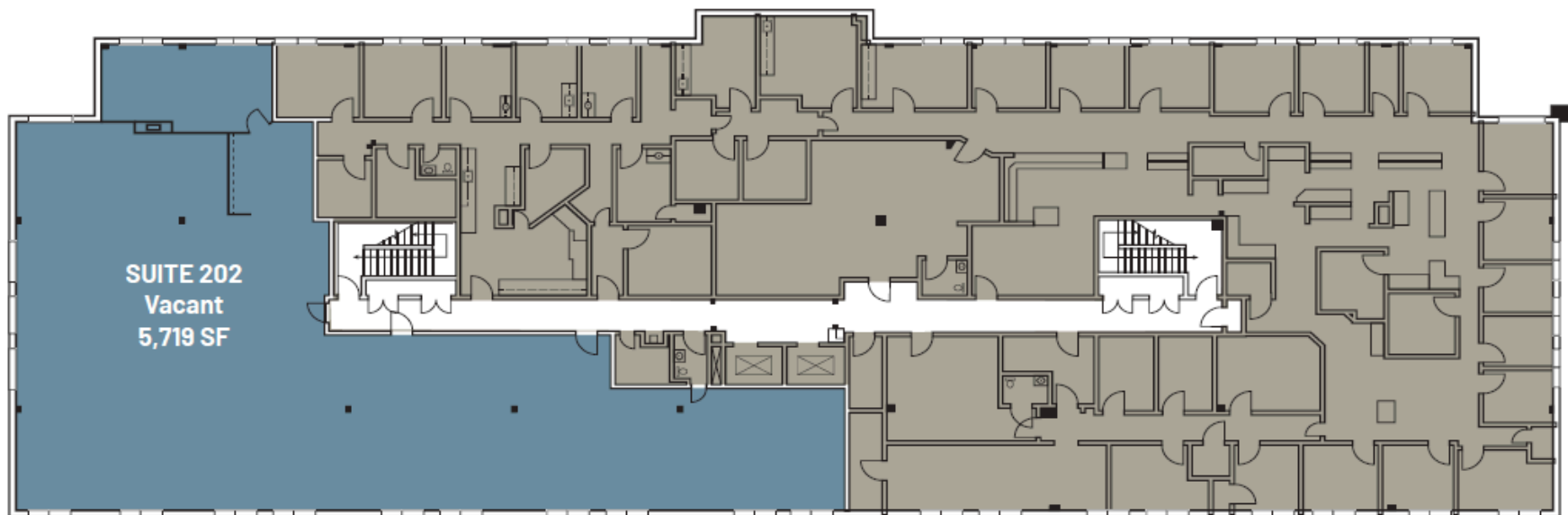


[Click for a virtual tour.](#)

# BUILDING 101 - SUITE 202

101 SW CARY PARKWAY CARY NC 27611

5,719 SF

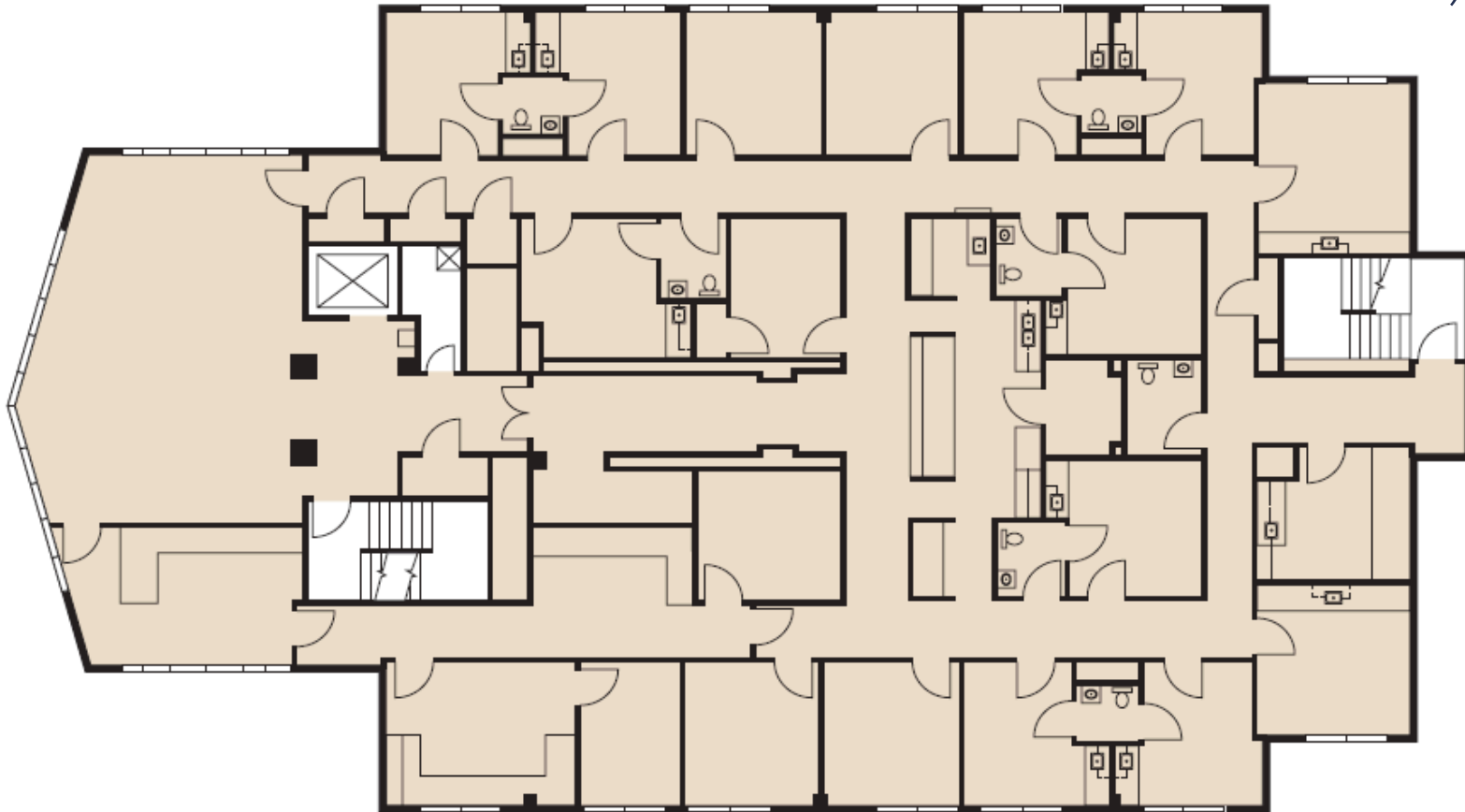


[Click for a virtual tour.](#)

# BUILDING 105 - SUITE 300

105 SW CARY PARKWAY CARY NC 27611

6,908 SF



[Click for a virtual tour.](#)

# AERIAL MAP

## DEMOGRAPHICS WITHIN 3-MILE



75,900 POPULATION



41 MEDIAN AGE



\$95,572 MEDIAN  
HOUSEHOLD INCOME



2.3 AVERAGE  
HOUSEHOLD SIZE

## LOCATION

- WAKEMED CARY HOSPITAL - 1.3 MI
- SHOPPES OF KILDAIRE - .3 MI
- DOWNTOWN CARY - 2.2 MI
- ELEMENTARY SCHOOL - .8 MI

SALTBOX VILLAGE

TRADER JOE'S

SHOPPES OF KILDAIRE

Kildaire Farm Rd

SW Cary Pkwy

TRIANGLE PEDIATRICS,  
NC RETINA, CARY  
INTERNAL MEDICINE,  
AVANCE CARE, WAKE  
PLASTIC SURGERY

WOODS OF KILDAIRE

SITE

WAKEMED CARY  
HOSPITAL

LE PETITE ACADEMY

# AREA MAP



# SITE MAP

101

105

SW Cary Pkwy





# ATLAS STARK

Atlas Stark Holdings, LLC.

All information contained herein is from sources deemed reliable; however, no representation or warranty is made to the accuracy thereof.

## CONTACT INFO

Trent Ragland, Broker

(C)919.815.8414

[tragland@atlasstark.com](mailto:tragland@atlasstark.com)

[www.atlasstark.com](http://www.atlasstark.com)