



BELDEN PLACE

4150 Belden Village St
Canton, Ohio 44718

TOTAL SF AVAILABLE	1,000-15,216
LEASE RATE	\$17.00
LEASE TYPE	Gross
YEAR BUILT	1976
STORIES	6
ACRES	3.54
ZONING	B3
TOWNSHIP	Jackson

Property Features

- Great location in the center of Belden Village.
- Walking distance to restaurants and shopping.
- Ample parking.
- Onsite daycare facility.
- Reserved parking available.
- Common area conference room that seats 25 people.
- Signage on top of building visible from I-77, in the event a tenant leases the entire 2nd floor

Jared Sanford

330 354 3466 • jared@naispring.com

Sean Sanford

330 284 0331 • sean@naispring.com

BELDEN PLACE

Office Space for Lease



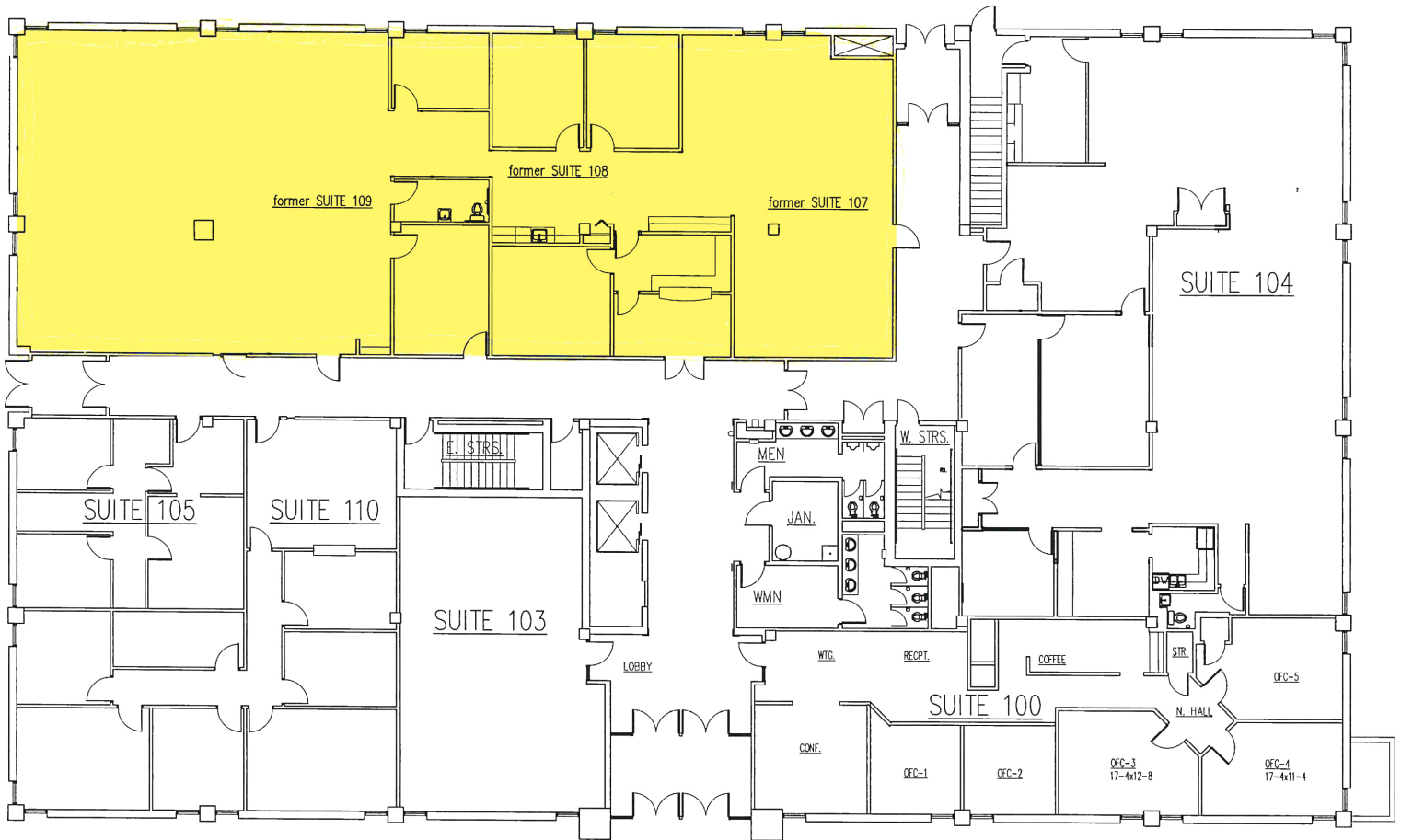
NO WARRANTY OR REPRESENTATION, EXPRESS OR IMPLIED, IS MADE AS TO THE ACCURACY OF THE INFORMATION CONTAINED HEREIN, AND THE SAME IS SUBMITTED SUBJECT TO ERRORS, OMISSIONS, CHANGE OF PRICE, RENTAL OR OTHER CONDITIONS, PRIOR SALE, LEASE OR FINANCING, OR WITHDRAWAL WITHOUT NOTICE, AND OF ANY SPECIAL LISTING CONDITIONS IMPOSED BY OUR PRINCIPALS NO WARRANTIES OR REPRESENTATIONS ARE MADE AS TO THE CONDITION OF THE PROPERTY OR ANY HAZARDS CONTAINED THEREIN ARE ANY TO BE IMPLIED.

8234 Pittsburg Ave NW
North Canton, Ohio 44720
330-966-8800
naispring.com

BELDEN PLACE

First Floor

Suite	Sq. Ft.	Sq. Ft. Rate	Monthly
109	6,187	\$17.00	\$8,764.92



*DIMENSIONS ARE APPROXIMATE. THIS INFORMATION IS FROM RELIABLE SOURCES BUT IS NOT GUARANTEED AND IS SUBJECT TO CHANGE

NO WARRANTY OR REPRESENTATION, EXPRESS OR IMPLIED, IS MADE AS TO THE ACCURACY OF THE INFORMATION CONTAINED HEREIN, AND THE SAME IS SUBMITTED SUBJECT TO ERRORS, OMISSIONS, CHANGE OF PRICE, RENTAL OR OTHER CONDITIONS, PRIOR SALE, LEASE OR FINANCING, OR WITHDRAWAL WITHOUT NOTICE, AND OF ANY SPECIAL LISTING CONDITIONS IMPOSED BY OUR PRINCIPALS NO WARRANTIES OR REPRESENTATIONS ARE MADE AS TO THE CONDITION OF THE PROPERTY OR ANY HAZARDS CONTAINED THEREIN ARE ANY TO BE IMPLIED.

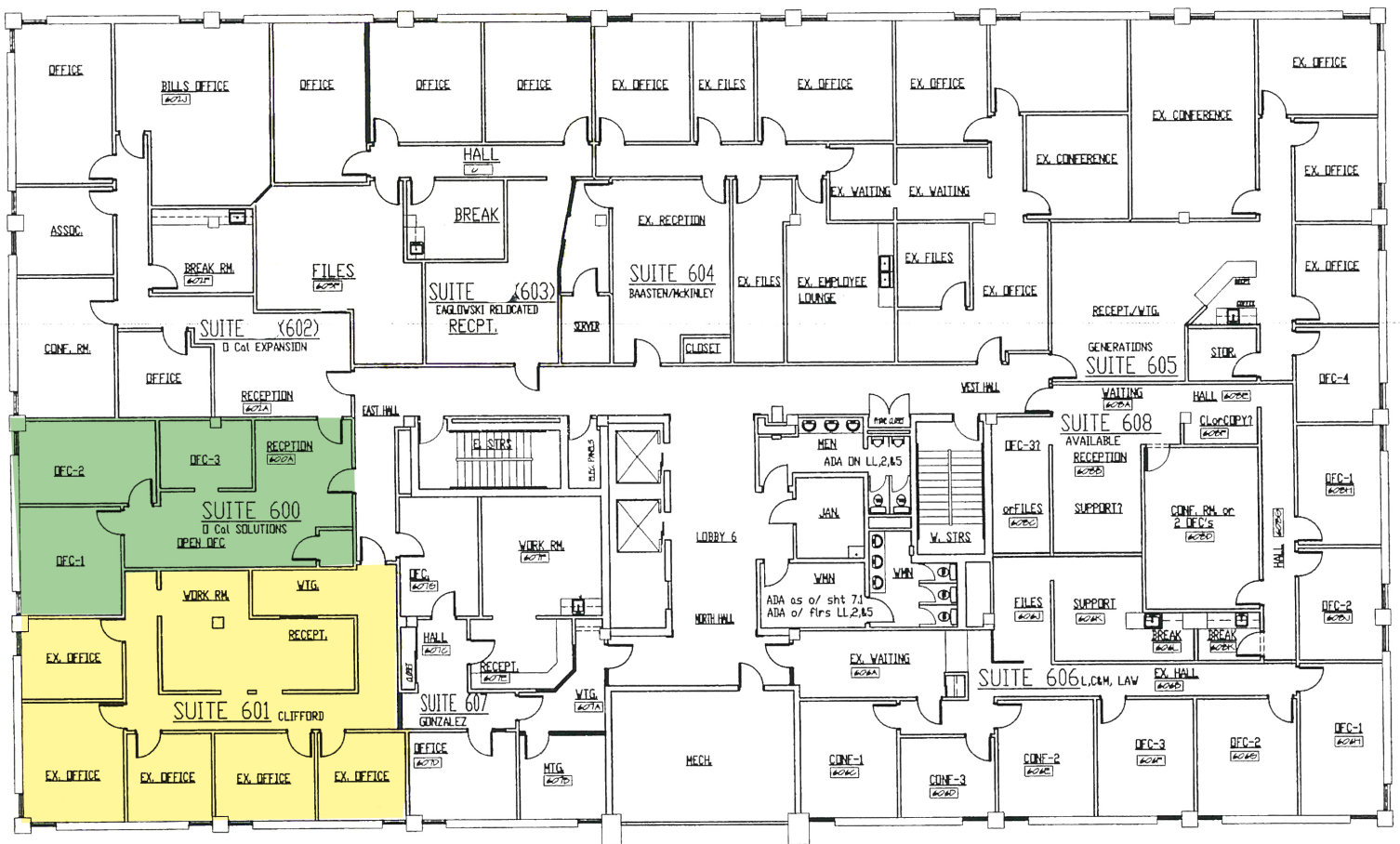
8234 Pittsburg Ave NW
North Canton, Ohio 44720
330-966-8800

naispring.com

BELDEN PLACE

Sixth Floor

Suite	Sq. Ft.	Sq. Ft. Rate	Monthly
600	1,000	\$17.00	\$1,416.67
601	1,690	\$17.00	\$2,394.17



*DIMENSIONS ARE APPROXIMATE. THIS INFORMATION IS FROM RELIABLE SOURCES BUT IS NOT GUARANTEED AND IS SUBJECT TO CHANGE

NO WARRANTY OR REPRESENTATION, EXPRESS OR IMPLIED, IS MADE AS TO THE ACCURACY OF THE INFORMATION CONTAINED HEREIN, AND THE SAME IS SUBMITTED SUBJECT TO ERRORS, OMISSIONS, CHANGE OF PRICE, RENTAL OR OTHER CONDITIONS, PRIOR SALE, LEASE OR FINANCING, OR WITHDRAWAL WITHOUT NOTICE, AND OF ANY SPECIAL LISTING CONDITIONS IMPOSED BY OUR PRINCIPALS NO WARRANTIES OR REPRESENTATIONS ARE MADE AS TO THE CONDITION OF THE PROPERTY OR ANY HAZARDS CONTAINED THEREIN ARE ANY TO BE IMPLIED.

8234 Pittsburg Ave NW
North Canton, Ohio 44720
330-966-8800

naispring.com

