

SUBJECT
PROPERTY

62ND AVE E

20TH ST E

FOR LEASE

HIGH VISIBILITY DAY CARE OR OFFICE OPPORTUNITY

6205 20TH ST E, FIFE, WA 98424

Exclusively listed by

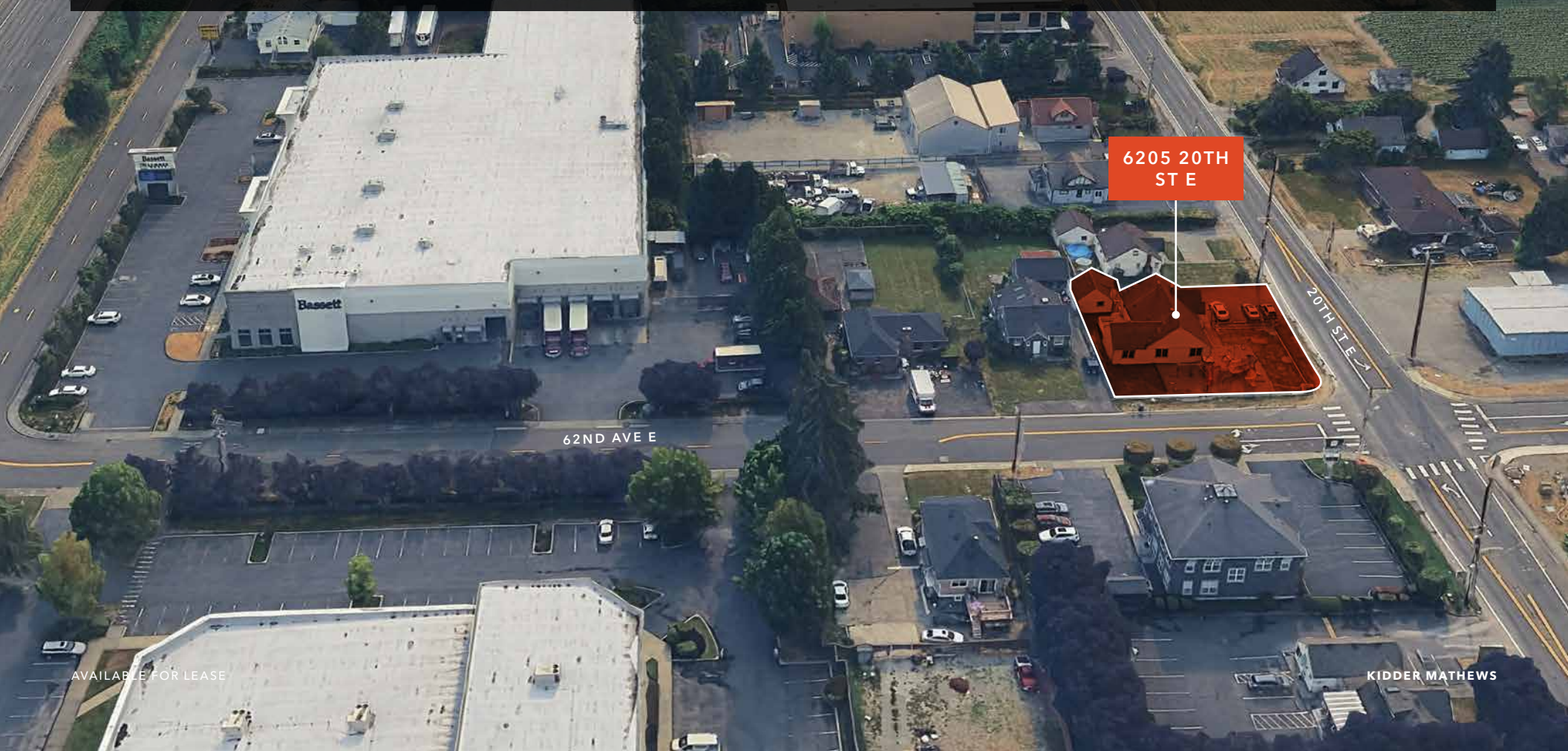
MATT MCLENNAN, SIOR, CCIM
Executive Vice President
253.722.1458
matt.mclennan@kidder.com

6205 20TH ST E & 1907 62ND AVE E



DAY CARE OR OFFICE OPPORTUNITY

This highly visible Fife property offers an outstanding opportunity for daycare or office users seeking a well-located, functional space. Positioned along 20th Street E with excellent exposure and just minutes from I-5, the site provides strong accessibility for both employees and clients. The existing improvements and fenced yard area make it particularly well-suited for childcare operations, while the layout also lends itself to professional office conversion. The surrounding mix of residential and commercial uses supports a wide range of service-oriented businesses. Opportunities with this combination of visibility, access, and usability are increasingly difficult to find in the Fife market.



6205 20TH
ST E

62ND AVE E

20TH ST E

AVAILABLE FOR LEASE

KIDDER MATHEWS

6205 20TH ST E & 1907 62ND AVE E

6205 20TH ST E

→ [VIEW PHOTOS](#)

TOTAL SF	2,296 SF
TOTAL AC	0.23 AC lot, large yard with playground
FEATURES	<ul style="list-style-type: none">• Current buildout can easily facilitate day care or general office uses• Mostly open concept• Bonus attic storage / office space• Fully fenced and secured• Newer HVAC system (2016)• Strong visibility from 20th S
AVAILABILITY	Available now
LEASE RATE	\$3,444/month + NNN
NNN	\$903.10/month
TOTAL RENT	\$4,347.10/month



AVAILABLE FOR LEASE

KIDDER MATHEWS

PACIFIC HWY E

km Kidder Mathews



3 MIN DRIVE
To I-5



54TH AVE E

FIFE

20TH ST E

6205 20TH ST E

62ND AVE E



6205 20TH ST E

For more information on this property, please contact

MATT MCLENNAN

253.722.1458

matt.mclennan@kidder.com

KIDDER.COM

This information supplied herein is from sources we deem reliable. It is provided without any representation, warranty, or guarantee, expressed or implied as to its accuracy. Prospective Buyer or Tenant should conduct an independent investigation and verification of all matters deemed to be material, including, but not limited to, statements of income and expenses. Consult your attorney, accountant, or other professional advisor. All Kidder Mathews designs are the sole property of Kidder Mathews. Branded materials and layouts are not authorized for use by any other firm or person.