

1,754 SF  
Office Space



## RIVER RUN CENTER—600 E RIVERPARK LANE, BOISE

### Property Highlights

- Excellent Office Location in South East Boise. Located on the Corner of Park-center Blvd and E Riverpark Lane
- Easy Access to The Greenbelt Trail
- On Site Amenities include Shower Room and Enclosed Bike Storage.

**Total Space Available: 1,754**

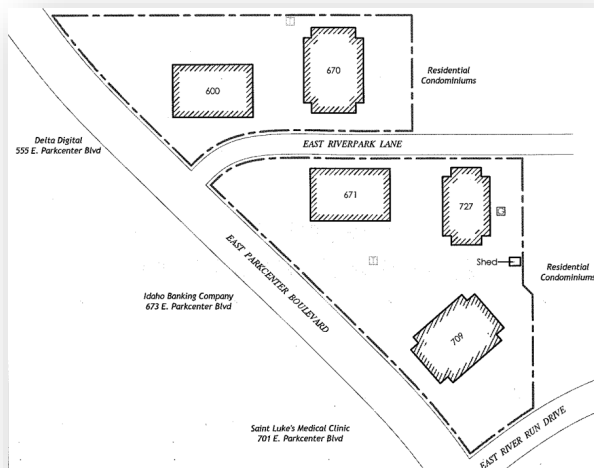
**Lease Rate: Negotiable, Full Service**

**Property Type: Office**

**Parking: Ample, Non-Exclusive Parking Throughout Center**

**Signage: Exterior, & Interior**

**\*signage based on square footage**



Rafanelli  
& Nahas

REAL ESTATE  
DEVELOPMENT

**JUSTIN VOGEL**

702 W. Idaho Street, Suite 825  
Boise, ID 83702

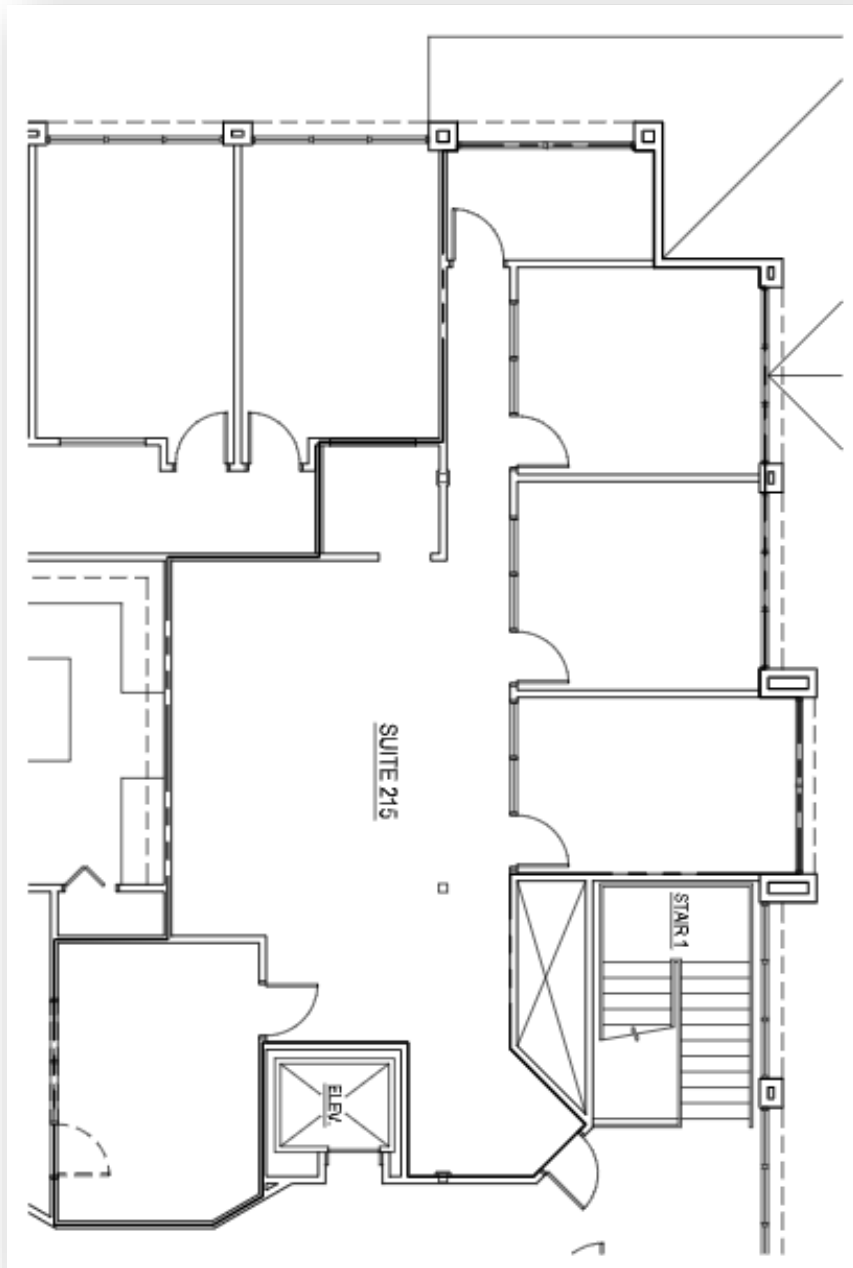
PH : 208.947.0407

FAX : 208.947.0411

CELL : 208.869.8302

e-mail: [justinv@rafnah.com](mailto:justinv@rafnah.com)

[www.rafnah.com](http://www.rafnah.com)



Reception Area	Open
Offices	4 Private Offices Open Office Area
Additional	Server/Break Room Copy Room

**Rafanelli  
& Nahas**

REAL ESTATE  
DEVELOPMENT