

±1,300 sqft Retail space

6726 Pacific Blvd, Huntington Park, CA 90255

6726

Pacific Blvd

FOR LEASE

Pacific Blvd,

In City of

Huntington Park

Heavy Walking Traffic

In front of Bus Stop

Signalized for Pedestrian

Great Street Visibility

Abundant of parking spaces



PROPERTY PROFILE & FEATURES

- Size: ±1,300 SF
- Lot Size: ±8,645 SF
- Year Built: 1939
- Zoning: HPCBD*
- Street Retail
- Located on famous Pacific Blvd
- Heavy pedestrian traffic
- Great street visibility

DEMOGRAPHICS

| | 1MILE | 3MILE | 5MILE |
|------------|--------|---------|-----------|
| POPULATION | 60,494 | 423,208 | 1,094,058 |
| HOUSEHOLDS | 14,855 | 99,173 | 272,222 |

AREA DESCRIPTION

- In front of Bus stop
- In front of Signalized pedestrian cross walk
- Adjacent to Blink Fitness
- Strong Retail Trade area
- High Population Density
- Over one million population in 5 mile radius

Community Summary

| | |
|---------------------------------|--------|
| Population Growth (since 2000) | 1% |
| Population Density (ppl / mile) | 20,445 |
| Household Size (ppl) | 4.062 |
| Households w/ Children | 48.4% |

We obtained the information above from sources we believe to be reliable. However, we have not verified its accuracy and make no guarantee, warranty or representation about it. It is submitted subject to the possibility of errors, omissions, change of price, rental or other conditions, prior sale, lease or financing, or withdrawal without notice. We include projections, opinions, assumptions or estimates for example only, and they may not represent current or future performance of the property. You and your tax and legal advisors should conduct your own investigation of the property and transaction.



For Information, please contact:

Joseph Khoshsim, joseph@simarealtyinc.com

DRE#01739843

Senior Associate

joseph@simarealtyinc.com

Direct: (213) 675-9775

8746 Holloway Dr

West Hollywood, CA 90069

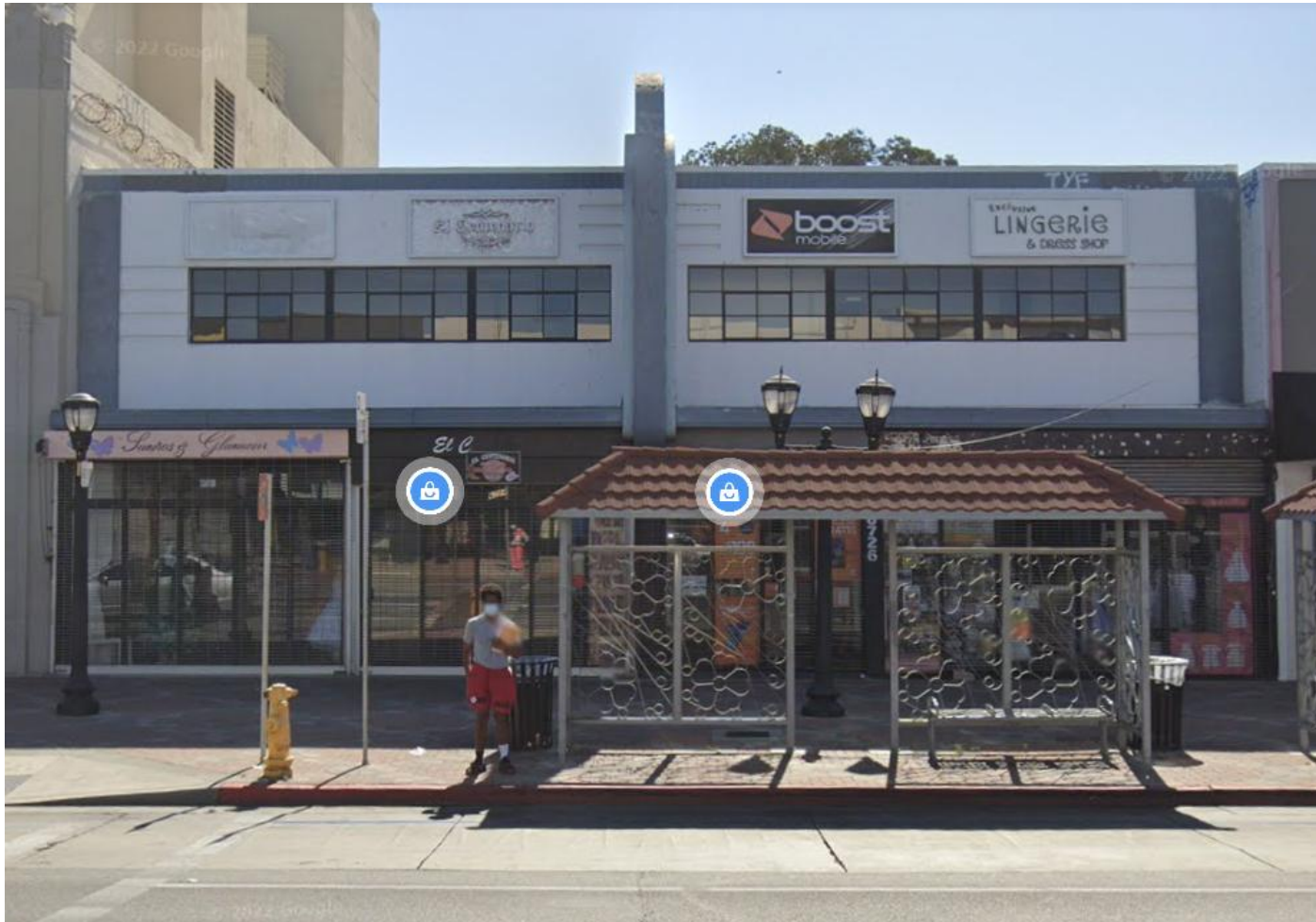
±1,300 sqft Retail space

6726 Pacific Blvd, Huntington Park, CA 90255

6726

Pacific Blvd

6726 Pacific Blvd, Huntington Park, CA 90255



For Information, please contact:

Joseph Khoshima,

DRE#01739843

joseph@simarealtyinc.com

Direct: (213) 675-9775

We obtained the information above from sources we believe to be reliable. However, we have not verified its accuracy and make no guarantee, performance of the property. You and your tax and legal advisors should conduct your own investigation of the property and transaction, warranty or representation about it. It is submitted subject to the possibility of errors, omissions, change of price, rental or other conditions, prior sale, lease or financing, or withdrawal without notice. We include projections, opinions, assumptions or estimates for example only, and they may not represent current or future

THE REAL ESTATE AGENCY

±1,300 sqft Retail space

6726 Pacific Blvd, Huntington Park, CA 90255

6726

Pacific Blvd

Site Plan

- Unit 6722 ±1,500 SF – Quinceanera Clothing
- Unit 6724 ±1,500 SF – Clothing Store
- Unit 6726 ±1,300 SF – **Available**
- Unit 6728 ±2,400 SF – Quinceanera Clothing



For Information, please contact:

Joseph Khoshisma,

DRE#01739843

joseph@simarealtyinc.com

Direct: (213) 675-9775

We obtained the information above from sources we believe to be reliable. However, we have not verified its accuracy and make no guarantee, warranty or representation about it. It is submitted subject to the possibility of errors, omissions, change of price, rental or other conditions, prior sale, lease or financing, or withdrawal without notice. We include projections, opinions, assumptions or estimates for example only, and they may not represent current or future performance of the property. You and your tax and legal advisors should conduct your own investigation of the property and transaction.

THE REAL ESTATE AGENCY

±1,300 sqft Retail space

6726 Pacific Blvd, Huntington Park, CA 90255

6726

Pacific Blvd

Area Map

Strong Retail Trade Area

Plenty of city parking behind the building

Signalized For Pedestrian Crossing

In front of Bus Stop

For Information, please contact:

Joseph Khoshsim,

DRE#01739843

Senior Associate

joseph@simarealtyinc.com

Direct: (213) 675-9775

8746 Holloway Dr

West Hollywood, CA 90069



We obtained the information above from sources we believe to be reliable. However, we have not verified its accuracy and make no guarantee, warranty or representation about it. It is submitted subject to the possibility of errors, omissions, change of price, rental or other conditions, prior sale, lease or financing, or withdrawal without notice. We include projections, opinions, assumptions or estimates for example only, and they may not represent current or future performance of the property. You and your tax and legal advisors should conduct your own investigation of the property and transaction.

THE REAL ESTATE AGENCY

±1,300 sqft Retail space

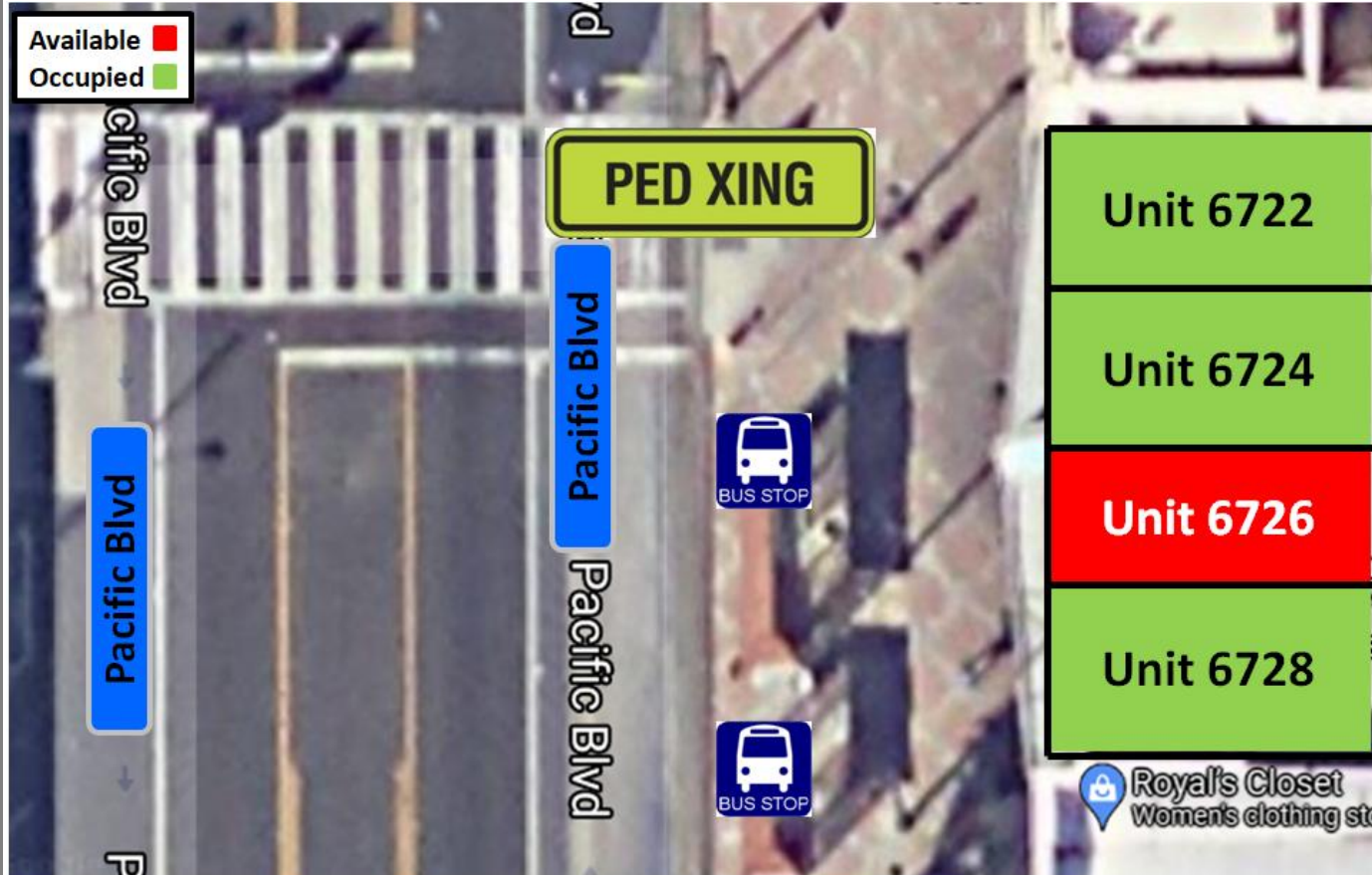
6726 Pacific Blvd, Huntington Park, CA 90255

6726

Pacific Blvd

Signalized PED XING & Bus Stop

In front of
Signalized
Pedestrian Crossing
and
Bus Stop



For Information, please contact:

Joseph Khoshsim,

DRE#01739843

Senior Associate

joseph@simarealtyinc.com

Direct: (213) 675-9775

8746 Holloway Dr

West Hollywood, CA 90069

We obtained the information above from sources we believe to be reliable. However, we have not verified its accuracy and make no guarantee, warranty or representation about it. It is submitted subject to the possibility of errors, omissions, change of price, rental or other conditions, prior sale, lease or financing, or withdrawal without notice. We include projections, opinions, assumptions or estimates for example only, and they may not represent current or future performance of the property. You and your tax and legal advisors should conduct your own investigation of the property and transaction.

THE REAL
ESTATE
AGENCY

±1,300 sqft Retail space

6726 Pacific Blvd, Huntington Park, CA 90255

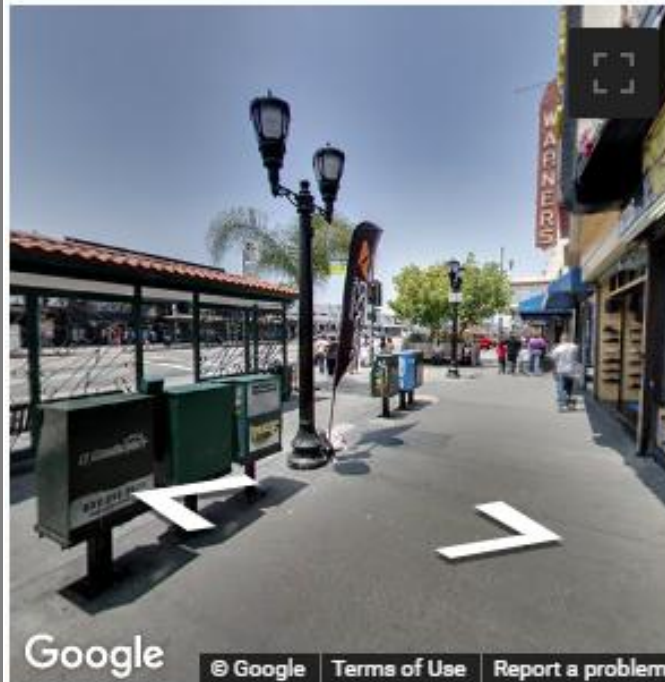
6726

Pacific Blvd

Walk Score

91 out of 100

About this Location



6722 Pacific Boulevard has a Walk Score of 91 out of 100. This location is a Walker's Paradise so daily errands do not require a car.

This location is in Huntington Park. Nearby parks include Middleton Street Recreation Center, Miles Park and Westside Park.

For Information, please contact:

Joseph Khoshsima,

DRE#01739843

Senior Associate

joseph@simarealtyinc.com

Direct: (213) 675-9775

8746 Holloway Dr

West Hollywood, CA 90069

We obtained the information above from sources we believe to be reliable. However, we have not verified its accuracy and make no guarantee, warranty or representation about it. It is submitted subject to the possibility of errors, omissions, change of price, rental or other conditions, prior sale, lease or financing, or withdrawal without notice. We include projections, opinions, assumptions or estimates for example only, and they may not represent current or future performance of the property. You and your tax and legal advisors should conduct your own investigation of the property and transaction.



±1,300 sqft Retail space

6726 Pacific Blvd, Huntington Park, CA 90255

6726

Pacific Blvd

Good Transit

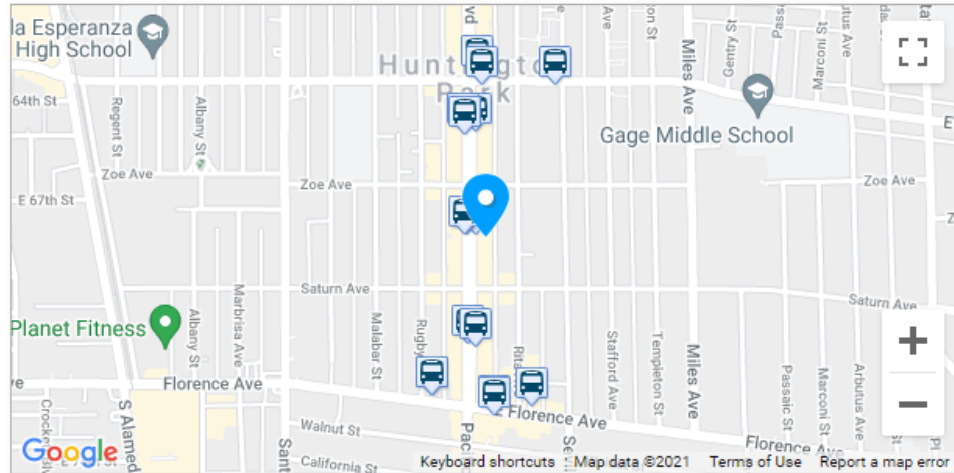
In front of Bus Line



Good Transit

[Add to your site](#)

6722 Pacific Boulevard has good transit which means many nearby public transportation options.



Rail lines:

Metro A Line (Blue) 1.1 mi

Bus lines:

| | | | |
|-------------------------|--------|----------------------|--------|
| 60 Metro Local Line | 0.0 mi | 251 Metro Local Line | 0.0 mi |
| CSQ Chesterfield Square | 0.0 mi | 111 Metro Local Line | 0.2 mi |
| 760 Metro Rapid Line | 0.2 mi | 751 Metro Rapid Line | 0.2 mi |
| 254 Metro Local Line | 0.2 mi | 110 Metro Local Line | 0.2 mi |
| 612 Metro Local Line | 0.3 mi | 611 Metro Local Line | 0.3 mi |

We obtained the information above from sources we believe to be reliable. However, we have not verified its accuracy and make no guarantee, warranty or representation about it. It is submitted subject to the possibility of errors, omissions, change of price, rental or other conditions, prior sale, lease or financing, or withdrawal without notice. We include projections, opinions, assumptions or estimates for example only, and they may not represent current or future performance of the property. You and your tax and legal advisors should conduct your own investigation of the property and transaction.



For Information, please contact:

Joseph Khoshsima,

DRE#01739843

Senior Associate

joseph@simarealtyinc.com

Direct: (213) 675-9775

8746 Holloway Dr

West Hollywood, CA 90069

±1,300 sqft Retail space

6726 Pacific Blvd, Huntington Park, CA 90255

6726

Pacific Blvd

Population around 6726 Pacific Blvd

1 Mile Radius ± 60,000

3 Mile Radius ± 423,000

5 Mile Radius ± 1,100,000

For Information, please contact:

Joseph Khoshsim,

DRE#01739843

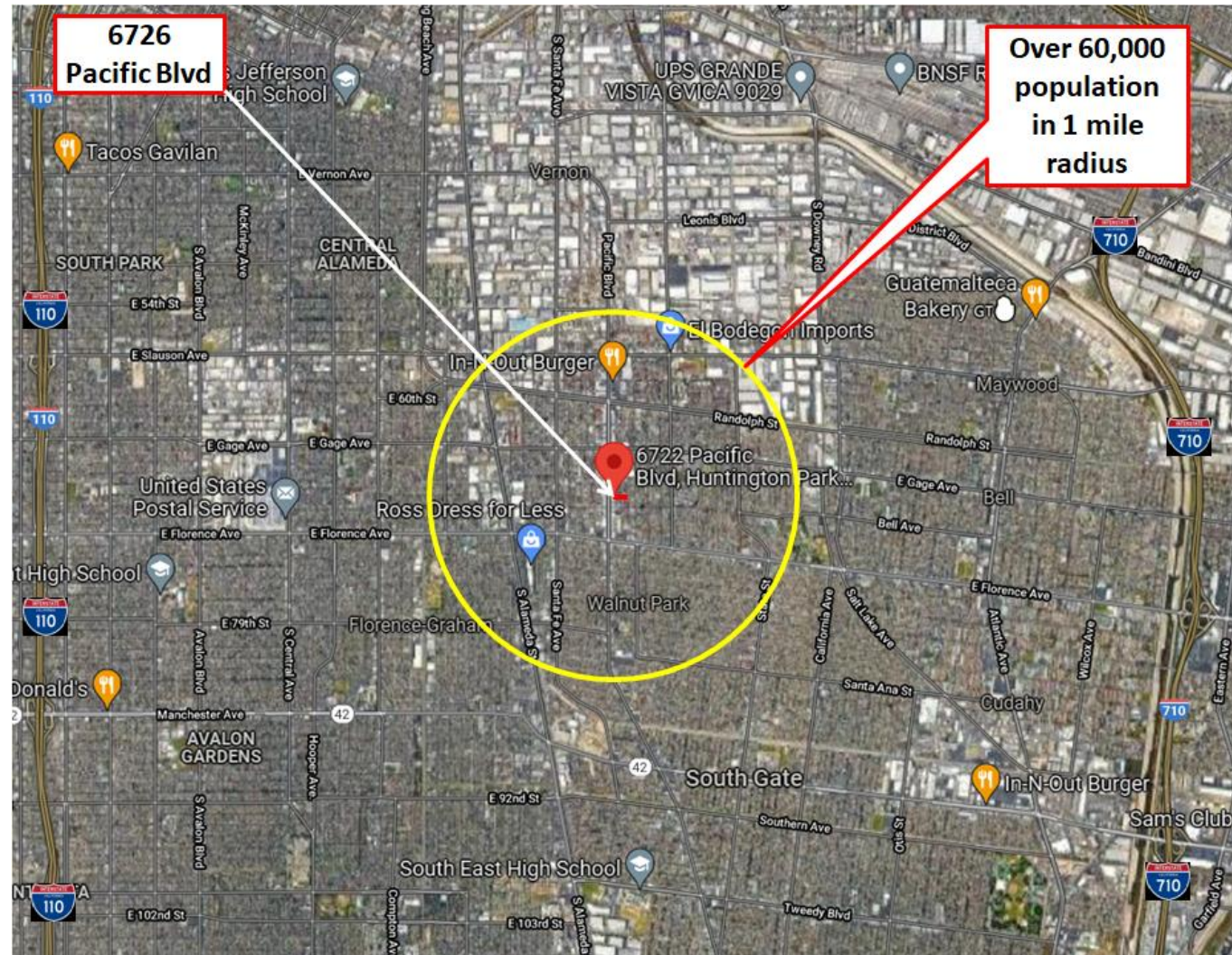
Senior Associate

joseph@simarealtyinc.com

Direct: (213) 675-9775

8746 Holloway Dr

West Hollywood, CA 90069



We obtained the information above from sources we believe to be reliable. However, we have not verified its accuracy and make no guarantee, warranty or representation about it. It is submitted subject to the possibility of errors, omissions, change of price, rental or other conditions, prior sale, lease or financing, or withdrawal without notice. We include projections, opinions, assumptions or estimates for example only, and they may not represent current or future performance of the property. You and your tax and legal advisors should conduct your own investigation of the property and transaction.



±1,300 sqft Retail space

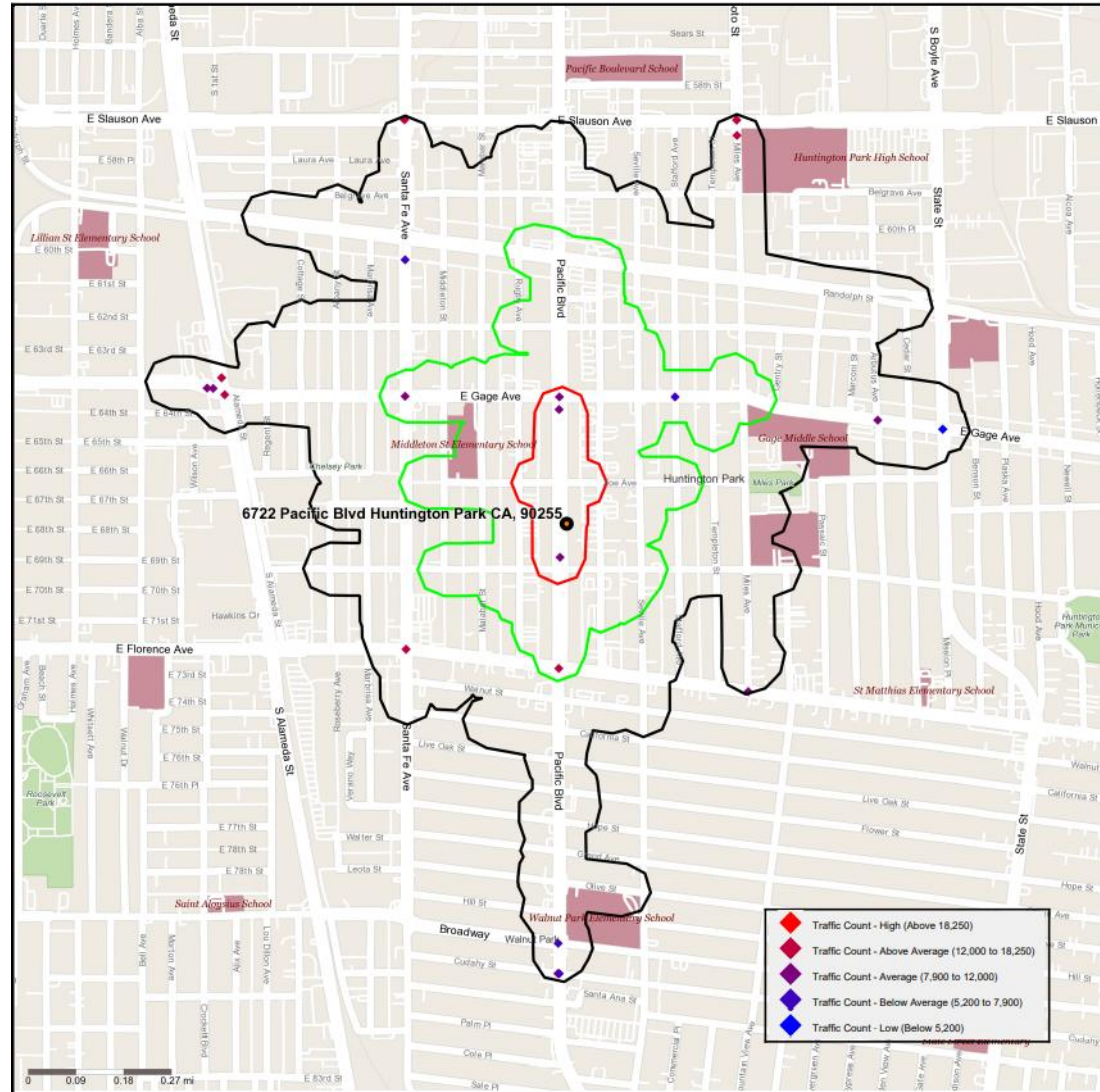
6726 Pacific Blvd, Huntington Park, CA 90255

6726

Pacific Blvd

Traffic Count

- ◆ Traffic Count - High (Above 18,250)
- ◆ Traffic Count - Above Average (12,000 to 18,250)
- ◆ Traffic Count - Average (7,900 to 12,000)
- ◆ Traffic Count - Below Average (5,200 to 7,900)
- ◆ Traffic Count - Low (Below 5,200)



For Information, please contact:

Joseph Khoshsim,

DRE#01739843

Senior Associate

joseph@simarealtyinc.com

Direct: (213) 675-9775

8746 Holloway Dr

West Hollywood, CA 90069

We obtained the information above from sources we believe to be reliable. However, we have not verified its accuracy and make no guarantee, warranty or representation about it. It is submitted subject to the possibility of errors, omissions, change of price, rental or other conditions, prior sale, lease or financing, or withdrawal without notice. We include projections, opinions, assumptions or estimates for example only, and they may not represent current or future performance of the property. You and your tax and legal advisors should conduct your own investigation of the property and transaction.



±1,300 sqft Retail space

6726 Pacific Blvd, Huntington Park, CA 90255

6726

Pacific Blvd

Site Pictures



For Information, please contact:

Joseph Khoshsim,

DRE#01739843

Senior Associate

joseph@simarealtyinc.com

Direct: (213) 675-9775

8746 Holloway Dr

West Hollywood, CA 90069

We obtained the information above from sources we believe to be reliable. However, we have not verified its accuracy and make no guarantee, warranty or representation about it. It is submitted subject to the possibility of errors, omissions, change of price, rental or other conditions, prior sale, lease or financing, or withdrawal without notice. We include projections, opinions, assumptions or estimates for example only, and they may not represent current or future performance of the property. You and your tax and legal advisors should conduct your own investigation of the property and transaction.



±1,300 sqft Retail space

6726 Pacific Blvd, Huntington Park, CA 90255

6726

Pacific Blvd

DEMOGRAPHICS

Population

Analysis Site: 6722 PACIFIC BLVD, HUNTINGTON PARK, CA 90255

| | 1 Mile | 3 Miles | 5 Miles |
|--|--------|---------|-----------|
| Population Summary | | | |
| Population | 60,494 | 423,208 | 1,094,058 |
| Group Quarters Population | 0.0% | 0.0% | 0.0% |
| Population In Households | 99.6% | 99.6% | 97.8% |
| Population in Families | 88.5% | 88.7% | 84.6% |
| Household Summary | | | |
| Households | 14,855 | 99,173 | 272,222 |
| Family Households | 84.3% | 85.7% | 78.7% |
| Non-Family Households | 15.7% | 14.3% | 21.3% |
| Median Age | | | |
| Total Population | 28.9 | 27.4 | 28.3 |
| Female | 29.7 | 28.2 | 29.1 |
| Male | 28.1 | 26.8 | 27.5 |
| Race & Ethnicity | | | |
| American Indian and Alaska Native Alone | 1.6% | 1.0% | 1.0% |
| Asian Alone | 0.7% | 0.5% | 1.6% |
| Black Alone | 0.8% | 8.0% | 14.3% |
| Native Hawaiian and Other Pacific Islander Alone | 0.0% | 0.1% | 0.1% |
| Some Other Race Alone | 43.4% | 46.0% | 43.0% |
| White Alone | 53.4% | 44.4% | 40.0% |
| Two or More Races | 3.7% | 4.0% | 3.8% |
| Hispanic or Latino Ethnicity | 97.2% | 90.3% | 81.6% |
| Not Hispanic or Latino Ethnicity | 2.8% | 9.7% | 18.4% |

We obtained the information above from sources we believe to be reliable. However, we have not verified its accuracy and make no guarantee, warranty or representation about it. It is submitted subject to the possibility of errors, omissions, change of price, rental or other conditions, prior sale, lease or financing, or withdrawal without notice. We include projections, opinions, assumptions or estimates for example only, and they may not represent current or future performance of the property. You and your tax and legal advisors should conduct your own investigation of the property and transaction.

For Information, please contact:

Joseph Khoshsim, 

DRE#01739843

Senior Associate

joseph@simarealtyinc.com

Direct: (213) 675-9775

8746 Holloway Dr

West Hollywood, CA 90069



±1,300 sqft Retail space

6726 Pacific Blvd, Huntington Park, CA 90255

6726

Pacific Blvd

DEMOGRAPHICS

Population by Age

Basic Variables

| | | | |
|-------------------|--------------|---------------|----------------|
| Population | 60494.000000 | 423208.000000 | 1094058.000000 |
| Female Population | 30286.000000 | 212371.000000 | 549222.000000 |
| Female Percentage | 50.064600 | 50.181200 | 50.200400 |
| Male Population | 30208.000000 | 210837.000000 | 544837.000000 |
| Male Percentage | 49.935400 | 49.818800 | 49.799600 |
| Households | 15461.000000 | 104385.000000 | 290411.000000 |
| Age: Total | | | |
| Age 0 to 4 | 8.921300 | 9.555200 | 9.018200 |
| Age 5 to 9 | 8.602300 | 9.036600 | 8.492200 |
| Age 10 to 14 | 8.863200 | 9.236700 | 8.735700 |
| Age 15 to 17 | 5.733800 | 5.895100 | 5.597700 |
| Age 18 to 20 | 5.303600 | 5.595300 | 6.046200 |
| Age 21 to 24 | 6.484900 | 6.747800 | 7.085800 |
| Age 25 to 29 | 8.165200 | 8.229600 | 8.153800 |
| Age 30 to 34 | 7.607500 | 7.650800 | 7.577700 |
| Age 35 to 39 | 7.648800 | 7.305000 | 7.199600 |
| Age 40 to 44 | 7.153600 | 6.803800 | 6.761500 |
| Age 45 to 49 | 5.961300 | 5.905400 | 6.037000 |
| Age 50 to 54 | 5.103300 | 5.140000 | 5.374500 |
| Age 55 to 59 | 4.321600 | 4.074800 | 4.271400 |
| Age 60 to 64 | 3.301300 | 2.981000 | 3.085400 |
| Age 65 to 69 | 2.316800 | 2.028600 | 2.167700 |
| Age 70 to 74 | 1.700800 | 1.455400 | 1.592500 |
| Age 75 to 79 | 1.247100 | 1.035700 | 1.175400 |
| Age 80 to 84 | 0.897100 | 0.696000 | 0.842300 |
| Age 85 Plus | 0.666500 | 0.627200 | 0.785300 |
| Median Age | 28.870000 | 27.430000 | 28.300000 |

We obtained the information above from sources we believe to be reliable. However, we have not verified its accuracy and make no guarantee, warranty or representation about it. It is submitted subject to the possibility of errors, omissions, change of price, rental or other conditions, prior sale, lease or financing, or withdrawal without notice. We include projections, opinions, assumptions or estimates for example only, and they may not represent current or future performance of the property. You and your tax and legal advisors should conduct your own investigation of the property and transaction.

For Information, please contact:

Joseph Khoshsima,

DRE#01739843

Senior Associate

joseph@simarealtyinc.com

Direct: (213) 675-9775

8746 Holloway Dr

West Hollywood, CA 90069



±1,300 sqft Retail space

6726 Pacific Blvd, Huntington Park, CA 90255

6726

Pacific Blvd

DEMOGRAPHICS

Population by Race

Analysis Site: 6722 PACIFIC BLVD, HUNTINGTON PARK, CA 90255

| Households | | Population by Race | |
|---|-----------|--|-----------|
| Average Household Size | 4.1 | Population of one race | 1,516,852 |
| Total Households | 386,249 | % American Indian and Alaska Native Alone | 1.0% |
| Population | | % Asian Alone | 1.3% |
| Population | 1,577,759 | % Black or African American alone | 12.1% |
| % Total Female | 50.2% | % Native Hawaiian and Other Pacific Islander Alone | 0.1% |
| % Total Male | 49.8% | % Some Other Race Alone | 43.8% |
| Adults | 1,067,218 | % White Alone | 41.7% |
| Household Population | 1,552,415 | Two or More Races | 60,908 |
| Population by Age by Sex: Female | | % Hispanic or Latino Ethnicity | 84.5% |
| % 00 to 5 years | 8.9% | % Not Hispanic or Latino Ethnicity | 15.5% |
| % 05 to 9 years | 8.5% | Population by Age by Sex: Male | |
| % 10 to 14 years | 8.7% | % 00 to 5 years | 9.4% |
| % 15 to 17 years | 5.6% | % 05 to 9 years | 8.8% |
| % 18 and 19 years | 4.0% | % 10 to 14 years | 9.1% |
| % 20 years | 1.9% | % 15 to 17 years | 5.8% |
| % 21 years | 1.7% | % 18 and 19 years | 4.0% |
| % 22 to 24 years | 5.0% | % 20 years | 2.0% |
| % 25 to 29 years | 8.0% | % 21 years | 1.8% |
| % 30 to 34 years | 7.5% | % 22 to 24 years | 5.4% |
| % 35 to 39 years | 7.2% | % 25 to 29 years | 8.4% |
| % 40 to 44 years | 6.7% | % 30 to 34 years | 7.7% |
| % 45 to 49 years | 6.0% | % 35 to 39 years | 7.3% |
| % 50 to 54 years | 5.5% | % 40 to 44 years | 6.9% |
| % 55 to 59 years | 4.3% | % 45 to 49 years | 6.0% |
| % 60 and 61 years | 1.4% | % 50 to 54 years | 5.2% |
| % 62 to 64 years | 1.8% | % 55 to 59 years | 4.1% |
| % 65 and 66 years | 1.0% | % 60 and 61 years | 1.3% |
| % 67 to 69 years | 1.3% | % 62 to 64 years | 1.6% |
| % 70 to 74 years | 1.7% | % 65 and 66 years | 0.9% |
| % 75 to 79 years | 1.4% | % 67 to 69 years | 1.1% |
| % 80 to 84 years | 1.0% | % 70 to 74 years | 1.4% |
| % 85 years and over | 1.0% | % 75 to 79 years | 0.9% |
| Median Age | 28.9 | % 80 to 84 years | 0.6% |
| | | % 85 years and over | 0.5% |
| | | Median Age | 27.3 |

For Information, please contact:

Joseph Khoshsim, joseph@simarealtyinc.com

DRE#01739843

Senior Associate

joseph@simarealtyinc.com

Direct: (213) 675-9775

8746 Holloway Dr

West Hollywood, CA 90069

We obtained the information above from sources we believe to be reliable. However, we have not verified its accuracy and make no guarantee, warranty or representation about it. It is submitted subject to the possibility of errors, omissions, change of price, rental or other conditions, prior sale, lease or financing, or withdrawal without notice. We include projections, opinions, assumptions or estimates for example only, and they may not represent current or future performance of the property. You and your tax and legal advisors should conduct your own investigation of the property and transaction.



±1,300 sqft Retail space

6726 Pacific Blvd, Huntington Park, CA 90255

6726

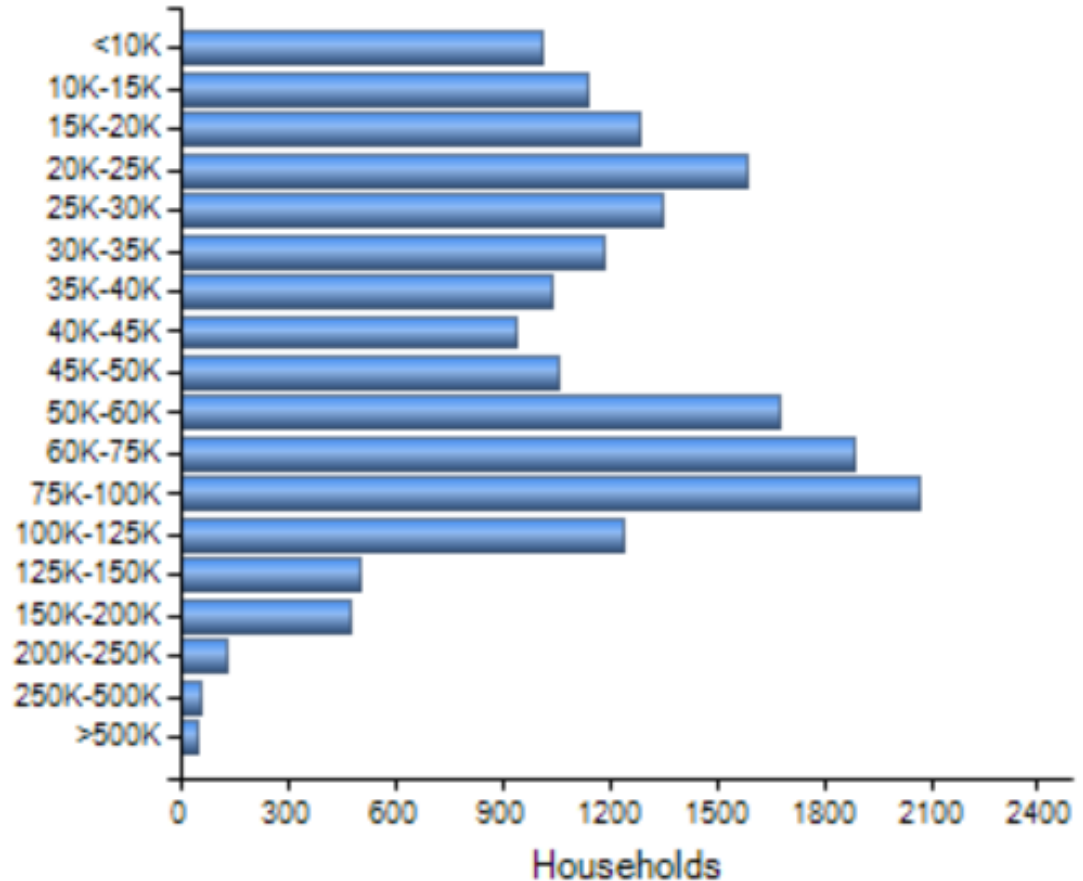
Pacific Blvd

DEMOGRAPHICS

Income By Dollar Range

Income by dollar range (Median Income: \$43,928)

In Dollars



For Information, please contact:

Joseph Khoshsim,

DRE#01739843

Senior Associate

joseph@simarealtyinc.com

Direct: (213) 675-9775

8746 Holloway Dr

West Hollywood, CA 90069

We obtained the information above from sources we believe to be reliable. However, we have not verified its accuracy and make no guarantee, warranty or representation about it. It is submitted subject to the possibility of errors, omissions, change of price, rental or other conditions, prior sale, lease or financing, or withdrawal without notice. We include projections, opinions, assumptions or estimates for example only, and they may not represent current or future performance of the property. You and your tax and legal advisors should conduct your own investigation of the property and transaction.



±1,300 sqft Retail space

6726 Pacific Blvd, Huntington Park, CA 90255

6726

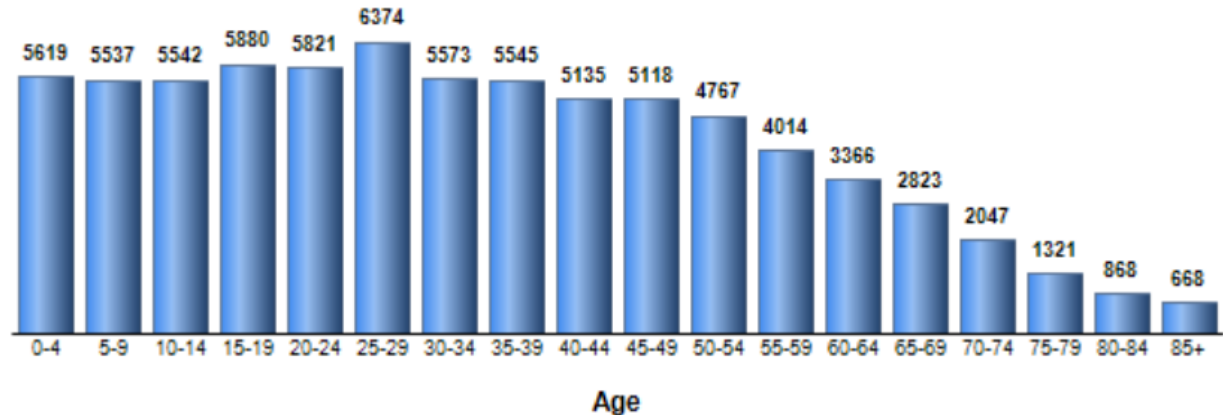
Pacific Blvd

DEMOGRAPHICS

Population Demographics

Population Demographics (FAQ)

The population of the community broken down by age group. The numbers at the top of each bar indicate the number of people in the age bracket below.



For Information, please contact:

Joseph Khoshsim, joseph@simarealtyinc.com

DRE#01739843

Senior Associate

joseph@simarealtyinc.com

Direct: (213) 675-9775

8746 Holloway Dr

West Hollywood, CA 90069

Total: 76,018

Households: 18,658

Median Age: 32

We obtained the information above from sources we believe to be reliable. However, we have not verified its accuracy and make no guarantee, warranty or representation about it. It is submitted subject to the possibility of errors, omissions, change of price, rental or other conditions, prior sale, lease or financing, or withdrawal without notice. We include projections, opinions, assumptions or estimates for example only, and they may not represent current or future performance of the property. You and your tax and legal advisors should conduct your own investigation of the property and transaction.

