

SUGARHOUSE RETAIL/OFFICE FOR LEASE

1987 SOUTH 1100 EAST, SALT LAKE CITY, UTAH 84106

SHORT TERM LEASE AVAILABLE



PROPERTY HIGHLIGHTS

- Suite 1991C: 1,600 SF Retail/Office
- Busy Area with High Traffic Counts
- Mostly Open Space
- Many Nearby Retail & Restaurant Amenities
- Includes Break Area with Sink
- Easy Access to I-80
- In the Heart of Sugarhouse

LEASE RATE : \$25.00/SF YEAR NNN

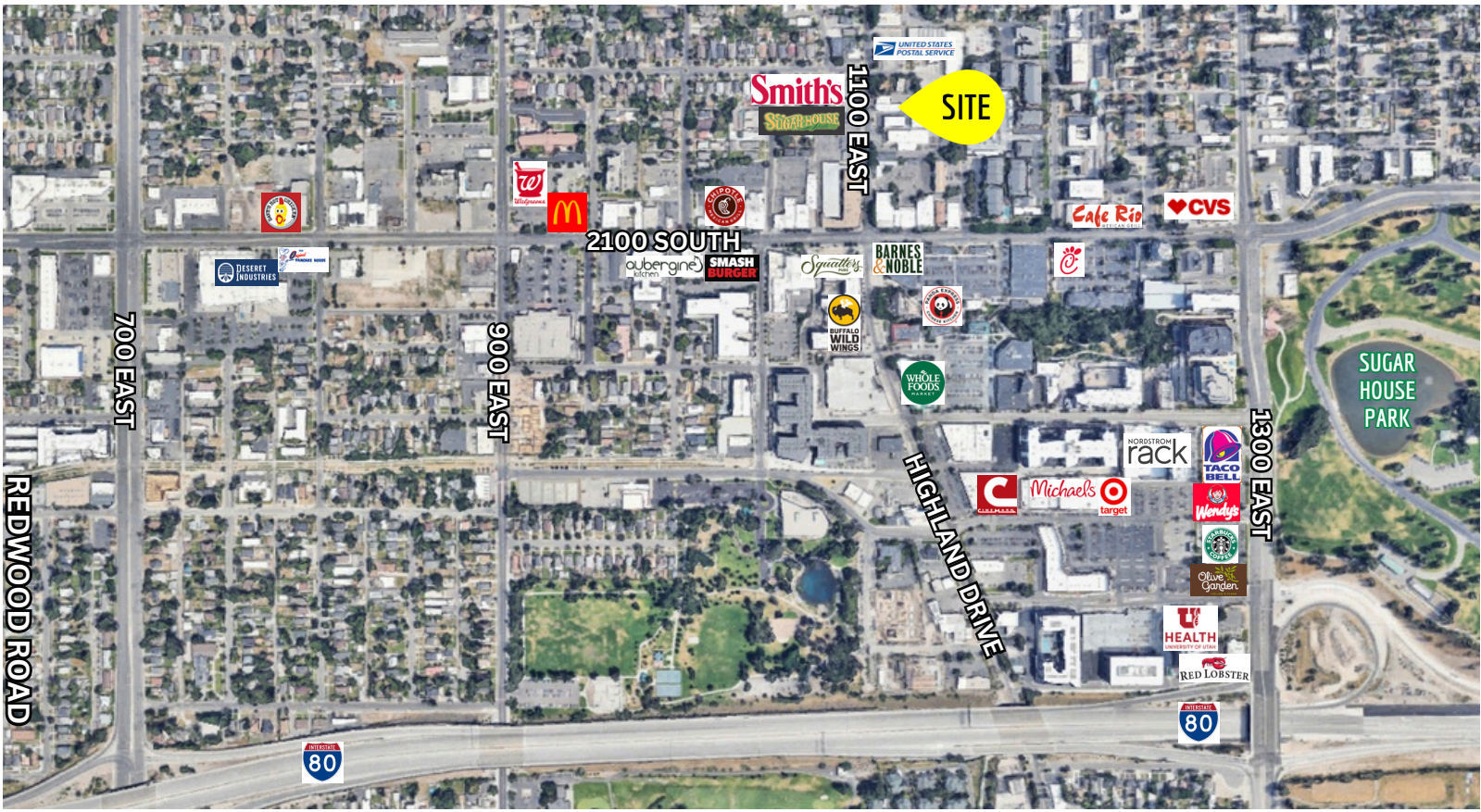
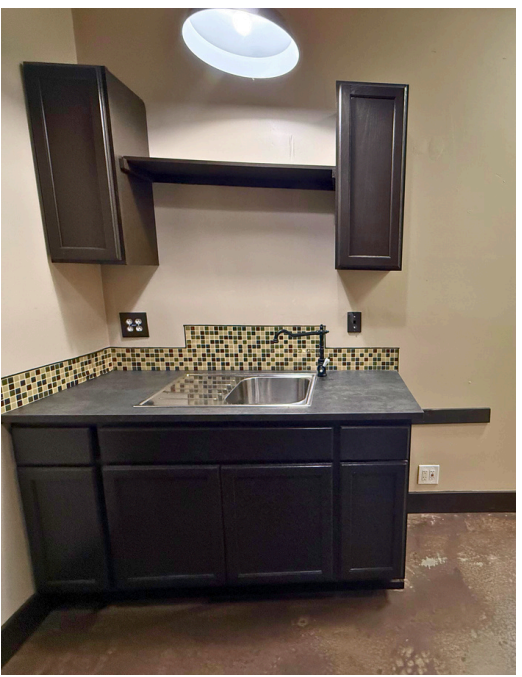
Contact:
801.617.1707

CRYSTAL JOHNSON
CRYSTAL.JOHNSON@CRCNATIONWIDE.COM



SUGARHOUSE RETAIL/OFFICE FOR LEASE

1987 SOUTH 1100 EAST, SALT LAKE CITY, UTAH 84106



This information is given with the understanding that all negotiations and/or real estate activity related to the property described above shall be conducted through this cRc Nationwide office. The information while not guaranteed, was obtained from sources we believe to be reliable.

Contact:
801.617.1707

CRYSTAL JOHNSON
CRYSTAL.JOHNSON@CRCNATIONWIDE.COM