

SUITE 1075  
4,371 RSF

REQ.EXIT

CORR. EXTENSION

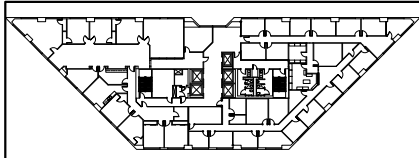
MECH

ELECT

FREIGHT

SUITE 1050

SUITE 1050  
2,050 RSF



L.M. HOLDER III, F.A.I.A. ARCHITECTURE PLANNING ENERGY CONSULTATION  
4202 Spicewood Springs Road Suite 214 Austin, Texas 78759 512-345-8817

NOT FOR REGULATORY APPROVAL, PERMITTING,  
OR CONSTRUCTION.

TX REGISTRATION #4214

DATE 08/12/2016

10TH FLOOR  
ONE O'CONNOR PLAZA  
VICTORIA, TEXAS