

# GEMINI BUSINESS PARK

902-930 GEMINI STREET, HOUSTON, TX, 77058



**SOUTHEAST HOUSTON / CLEARLAKE**



**GREAT ACCESS TO INTERSTATE 45 & NASA PARKWAY**



**17' CLEAR HEIGHT**



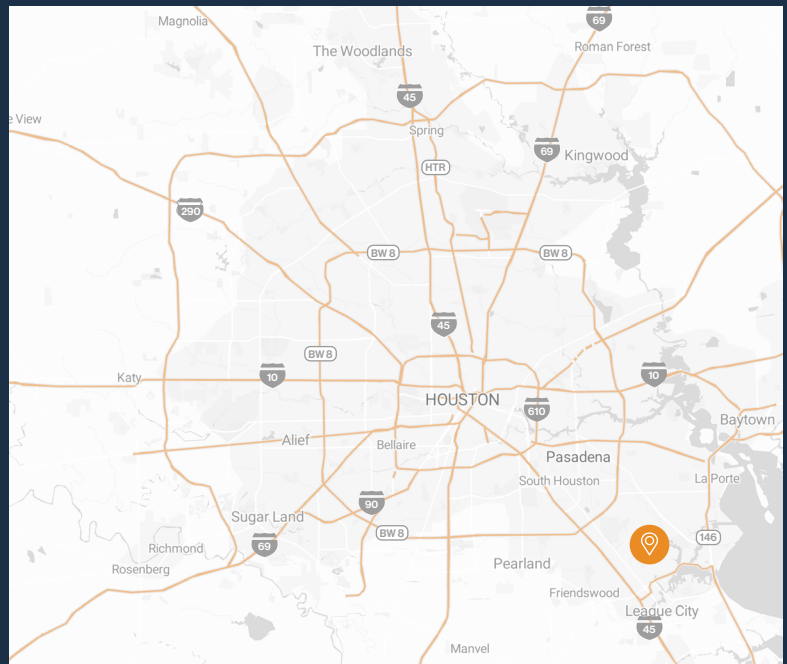
**100% CLIMATE CONTROLLED**



**GRADE-LEVEL LOADING**



**SUITES AVAILABLE FROM 8,925 SF TO 17,920 SF**



**RYAN YOUNG**



281.721.4763



ryan.young@fort-companies.com



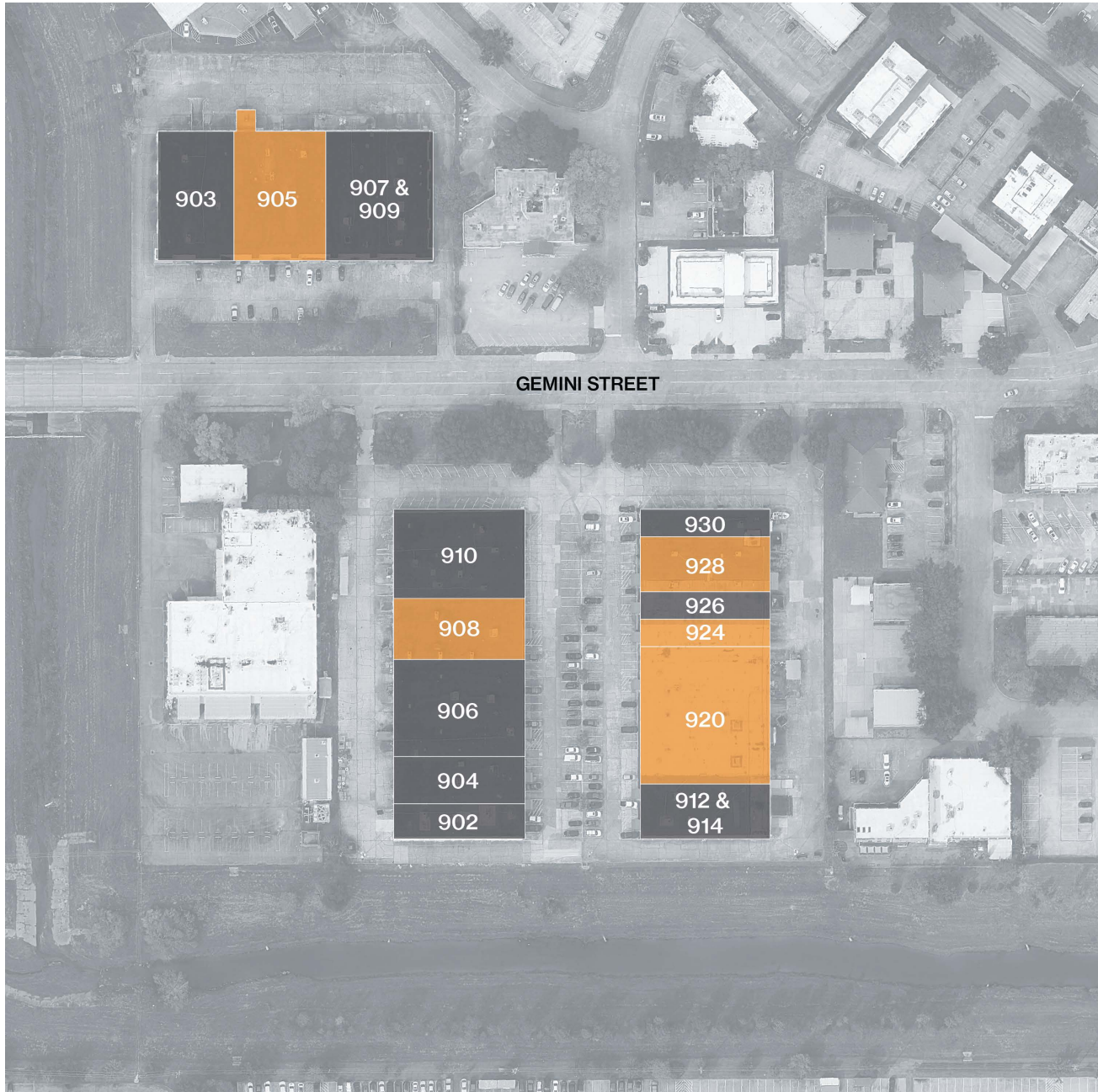


**FORT**  
LEASING

# GEMINI BUSINESS PARK

902-930 GEMINI ST  
HOUSTON, TEXAS 77058

## SITE PLAN



**RYAN YOUNG**  
281.721.4763  
ryan.young@fort-companies.com

This information is deemed reliable, however, Fort makes no guarantee, warranties, or representations as to the completeness or accuracy thereof.



**FORT**  
LEASING

# GEMINI BUSINESS PARK

902-930 GEMINI ST  
HOUSTON, TEXAS 77058

## UNIT 908 – 8,960 SF

### 8,960 SF WAREHOUSE

- 17' Clear Height
- (2) Grade Level Overhead Doors





**FORT**  
LEASING

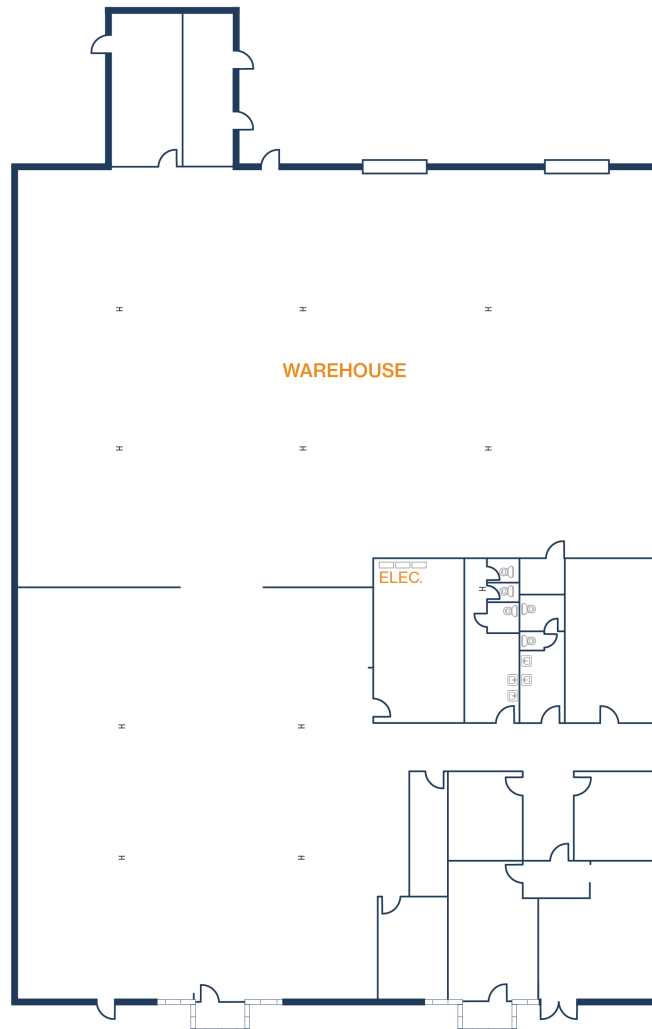
# GEMINI BUSINESS PARK

902-930 GEMINI ST  
HOUSTON, TEXAS 77058

## UNIT 905 – 15,007 SF

7,444 SF OFFICE / 7,563 SF WAREHOUSE

- 17' Clear Height
- (2) Grade Level Overhead Doors
- Mix of Private Offices and Open Area



**RYAN YOUNG**  
281.721.4763  
ryan.young@fort-companies.com

This information is deemed reliable, however, Fort makes no guarantee, warranties, or representations as to the completeness or accuracy thereof.



**FORT**  
LEASING

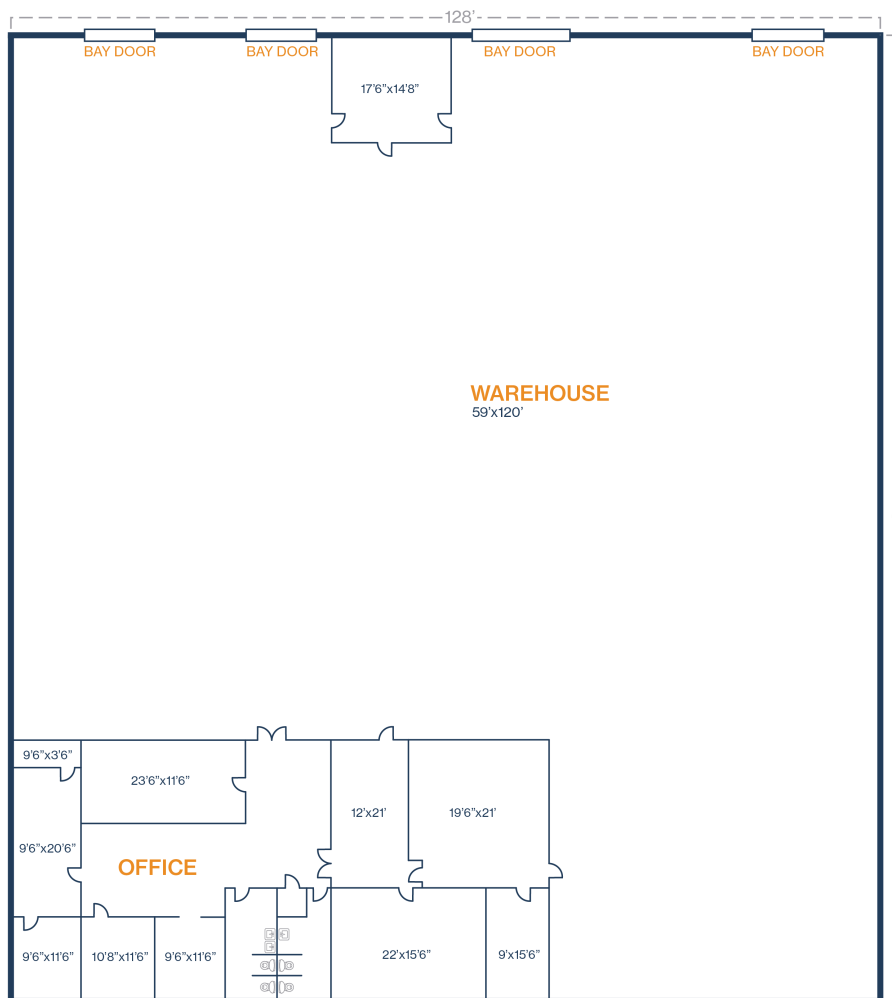
# GEMINI BUSINESS PARK

902-930 GEMINI ST  
HOUSTON, TEXAS 77058

## UNIT 920 – 17,920 SF

3,042 SF OFFICE / 14,878 SF WAREHOUSE

- 17' Clear Height
- (4) Grade Level Doors
- Mix of Private Offices and Open Area



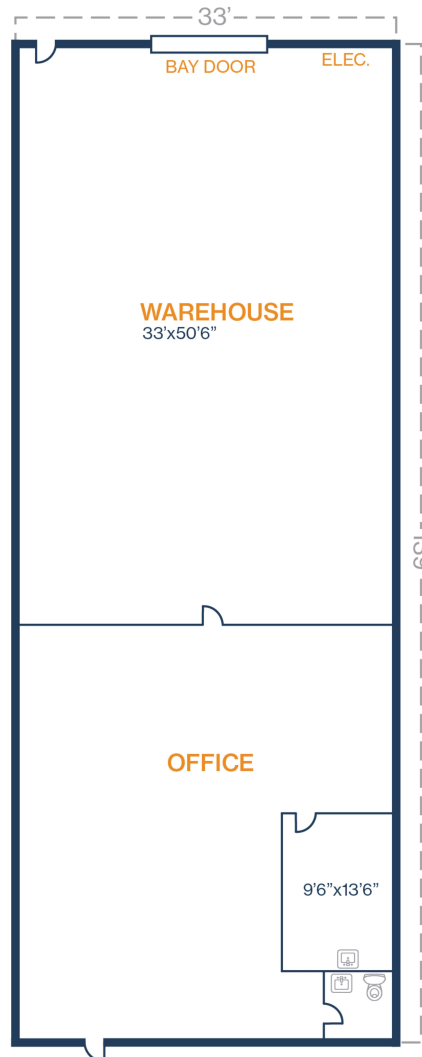
**RYAN YOUNG**  
281.721.4763  
ryan.young@fort-companies.com

This information is deemed reliable, however, Fort makes no guarantee, warranties, or representations as to the completeness or accuracy thereof.

## UNIT 924 – 4,531 SF

2,719 SF OFFICE / 1,812 SF WAREHOUSE

- 17' Clear Height
- (1) Grade Level Door
- (1) Private Office and (1) Warehouse Office





**FORT**  
LEASING

# GEMINI BUSINESS PARK

902-930 GEMINI ST  
HOUSTON, TEXAS 77058

## UNIT 928 – 8,925 SF

2,637 SF OFFICE / 6,288 SF WAREHOUSE

- (2) Grade level overhead doors
- (5) Private offices & (1) warehouse office
- 17' Clear height



**RYAN YOUNG**  
281.721.4763  
ryan.young@fort-companies.com

This information is deemed reliable, however, Fort makes no guarantee, warranties, or representations as to the completeness or accuracy thereof.