

FOR LEASE



Virtual Staging

Classic SOMA Brick and Timber



660 Third St.
2nd Floor, 20,467 SF

FOR TERMS OR TO TOUR
David Polatnick
415.305.4836
david@propertyx.com

PolatnickProperties, INC.

The information provided above is believed to be reliable but its accuracy has not been verified and it is given with no guarantee or warranty. Offering is subject to errors, omissions, price changes, prior rental, lease, sale or withdrawal without notice. Projections, opinions, assumptions and estimates are for example only and may not accurately reflect property performance. You should conduct a thorough investigation of the property and arrange for all necessary tax, legal and other advisors prior to any lease.

DETAILS

Exceptional Brick & Timber Full-Floor Office Space

Step into a full-floor workspace in a beautifully restored 100 year old brick-and-timber coffee warehouse. This open, bright, and flexible space is designed to support collaboration, productivity, and creativity.



▶ **LOCATION:** 660 Third Street, San Francisco

▶ **SIZE:** Approximately 20,467 SQ FT, the entire 2nd floor

▶ **AVAILABILITY:** Immediately

▶ **TERM:** 2-10 years

▶ **USE:** Zoned for Office

▶ **RATE:** Call for Pricing

▶ **LEASE:** Direct with Landlord

▶ **BONUS:** Furniture allowance available to customize the space

▶ **BUILDING FEATURES**

- Brand new building lobby
- Exposed ceilings and increased natural light
- Five large conference rooms
- Four open areas for desks and collaboration zones
- Six private meeting or office rooms
- In-suite exercise gym
- Kitchen with four ADA-compliant restrooms
- Additional all-gender restroom with a shower
- HVAC
- Ample on-site storage and bike room
- 24/7 secure FOB card access system
- New security camera system
- On-site parking
- Walker Score 95, Transit Score 94
- One block from Caltrain, Muni, Light Rail, and the new 4th St Subway
- Close to new restaurants, retailers, Oracle Park, and Chase Center

INTERIOR

660 Third St.
2nd Floor, 20,467 SF



Virtual Staging



PolatnickProperties, INC.

The information provided above is believed to be reliable but its accuracy has not been verified and it is given with no guarantee or warranty. Offering is subject to errors, omissions, price changes, prior rental, lease, sale or withdrawal without notice. Projections, opinions, assumptions and estimates are for example only and may not accurately reflect property performance. You should conduct a thorough investigation of the property and arrange for all necessary tax, legal and other advisors prior to any lease.

INTERIOR

660 Third St.
2nd Floor, 20,467 SF



Virtual Staging



PolatnickProperties, INC.

The information provided above is believed to be reliable but its accuracy has not been verified and it is given with no guarantee or warranty. Offering is subject to errors, omissions, price changes, prior rental, lease, sale or withdrawal without notice. Projections, opinions, assumptions and estimates are for example only and may not accurately reflect property performance. You should conduct a thorough investigation of the property and arrange for all necessary tax, legal and other advisors prior to any lease.

INTERIOR

660 Third St.
2nd Floor, 20,467 SF

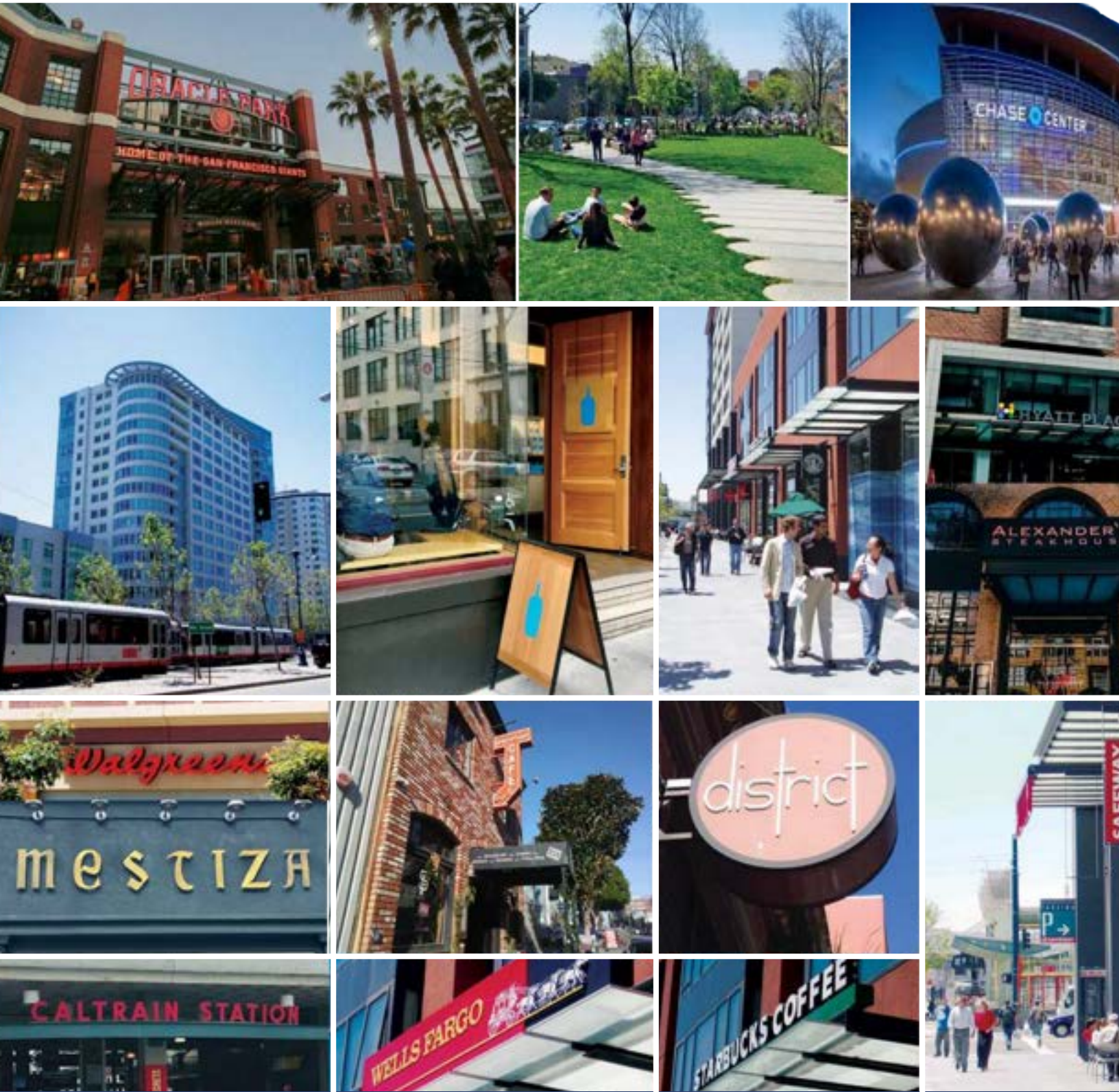


PolatnickProperties, INC.

The information provided above is believed to be reliable but its accuracy has not been verified and it is given with no guarantee or warranty. Offering is subject to errors, omissions, price changes, prior rental, lease, sale or withdrawal without notice. Projections, opinions, assumptions and estimates are for example only and may not accurately reflect property performance. You should conduct a thorough investigation of the property and arrange for all necessary tax, legal and other advisors prior to any lease.

NEIGHBORHOOD

660 Third St.
2nd Floor, 20,467 SF

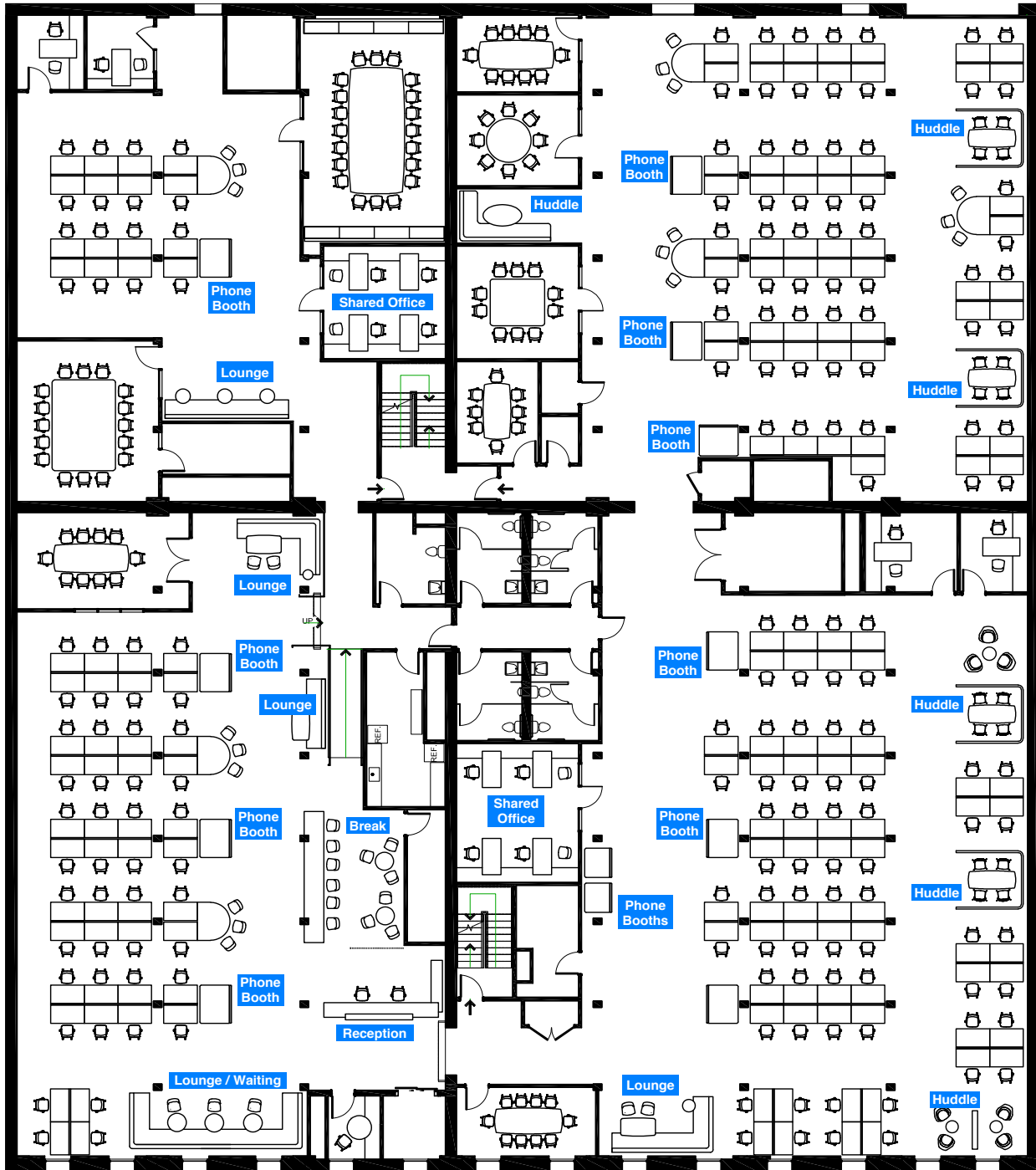


PolatnickProperties, INC.

The information provided above is believed to be reliable but its accuracy has not been verified and it is given with no guarantee or warranty. Offering is subject to errors, omissions, price changes, prior rental, lease, sale or withdrawal without notice. Projections, opinions, assumptions and estimates are for example only and may not accurately reflect property performance. You should conduct a thorough investigation of the property and arrange for all necessary tax, legal and other advisors prior to any lease.

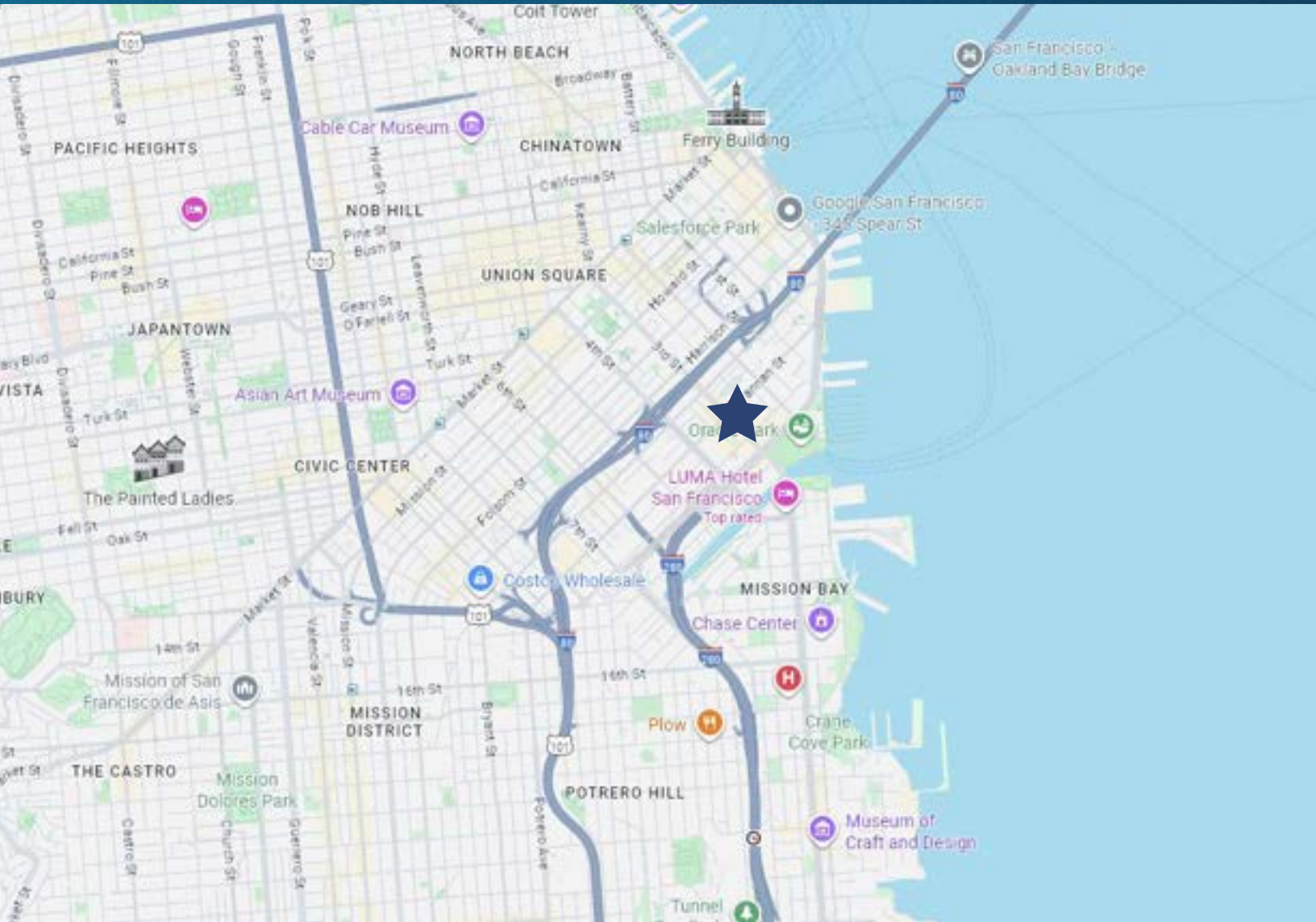
FLOOR PLAN

660 Third St.
2nd Floor, 20,467 SF



GETTING THERE

660 Third St.
2nd Floor, 20,467 SF



Transportation Info

Public Transit:

Several Muni bus lines (8, 10, 30, 45, 47, and 90) and metro lines (T and N) stop within walking distance. The Caltrain Station is also a 10 to 15 minute walk away.

Biking:

The area has ample public bike racks and is served by Ford Go-Bike.

Additional Parking:

There are several parking lots and garages in the vicinity.

660 THIRD



PolatnickProperties, INC.

FOR TERMS OR TO TOUR

David Polatnick

415.305.4836

david@propertyx.com

The information provided above is believed to be reliable but its accuracy has not been verified and it is given with no guarantee or warranty. Offering is subject to errors, omissions, price changes, prior rental, lease, sale or withdrawal without notice. Projections, opinions, assumptions and estimates are for example only and may not accurately reflect property performance. You should conduct a thorough investigation of the property and arrange for all necessary tax, legal and other advisors prior to any lease.