

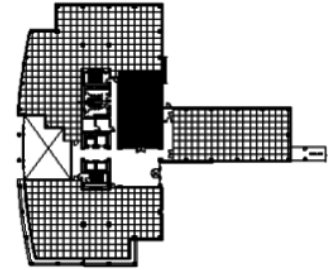
Esplanade V
Suite 110
3250 Lacey Road
Downers Grove, IL 60515



SUITE FEATURES

- Very strong lobby identity
- Reception area
- 6 private offices
- Conference room
- Kitchen
- Manned security in lobby

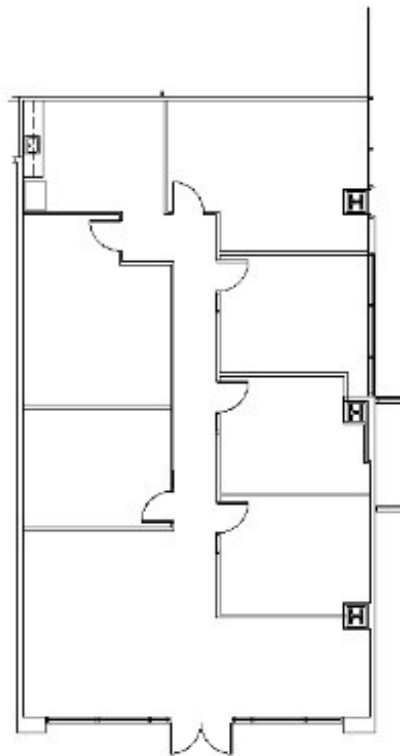
FIRST FLOOR PLAN



DETAILS

Square Feet: 2,320 S.F.
Net Rent: \$19.75/S.F.
OP. Expense: \$9.90/S.F.
Tax: \$2.34/S.F.
Gross Rent: \$31.99/S.F.

SPACE PLAN



CONTACT INFORMATION

David Andrews

✉ da@hpre.com

P 630-719-5565

F 630-719-5570

Philip Sheridan

✉ phil_sheridan@hpre.com

P 630-719-5567

F 630-719-5570