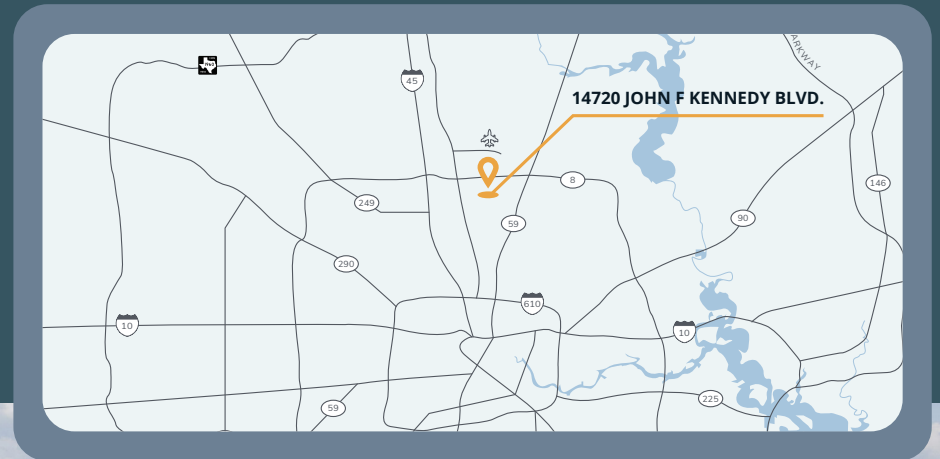


For Lease

235,845 SF

14720 JOHN F. KENNEDY BLVD,
HOUSTON, TX 77032



Property Overview

- New generation tilt-wall construction
- Cross-dock building configuration
- Located in the North Houston submarket
- Close proximity to Bush Intercontinental Airport
- Immediate access to Beltway 8 with short drive times to Interstate 45, Hardy Toll Road, and Interstate 59/69



For more information, contact:

GARRET GEACCONI

409.789.9751

garret.geaccone@streamrealty.com

BOONE SMITH

281.726.1299

boone.smith@streamrealty.com

STREAM[®]

G|I|D



BUILDING FEATURES

235,845
SF Total

228,656
SF Warehouse

7,189
SF Office

180'
Dedicated Truck Court

210'
Shared Truck Court

32'
Clear Height

390'
Building Depth

60'
Speed Bay

10
HVLS Fans

2
Over-Sized Drive-In Ramps

55
Dock-High Doors

6
Mechanical Pit Levelers

52' x 45'
Column Spacing

37
Trailer Parking Spots

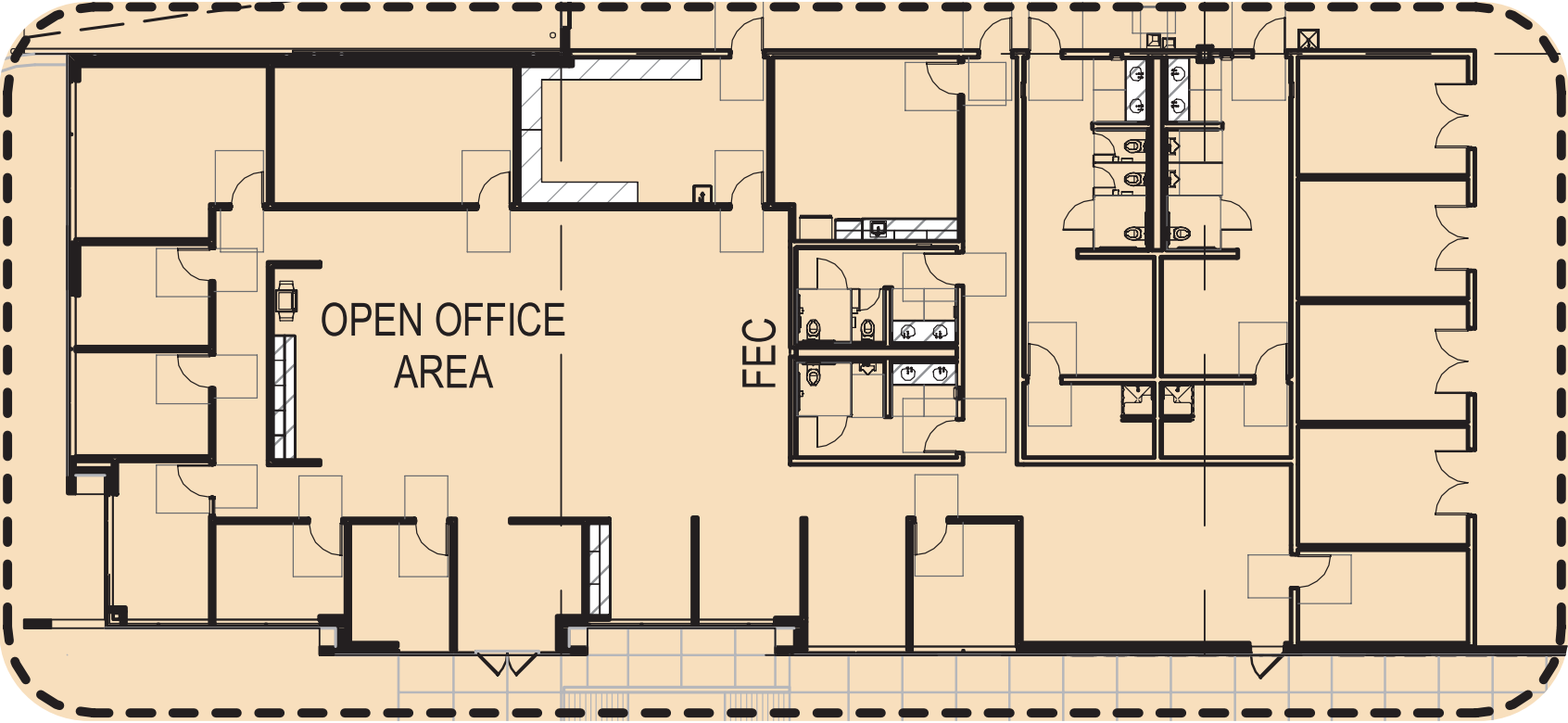
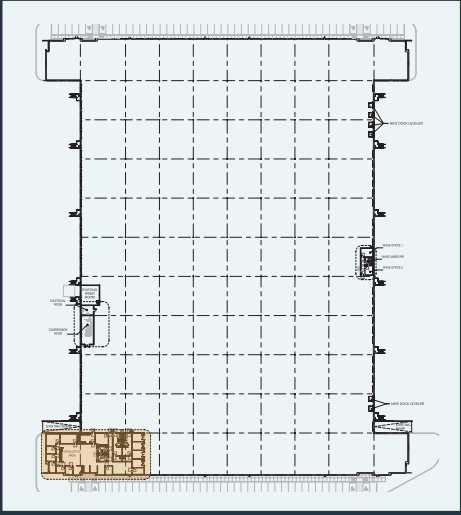
ESFR
Sprinkler System

261
Auto Parking Spots

3,000
Amps 3 Phase/
480V Power

Office Space

7,189 SF



Corporate Neighbors



Property Accessibility

▶ INGRESS
◀ EGRESS



DRIVE TIMES

Beltway 8	3 min.	Hardy Toll Road	7 min.	610	16 min.
IAH	6 min.	I-45.....	9 min.	Hwy. 99	19 min.
Hwy. 69	6 min.	Hwy. 1960	11 min.	Downtown Houston	22 min.

STREAM®

G|I|D

For more information, contact:

GARRET GEACCONO

409.789.9751

garret.geaccone@streamrealty.com

BOONE SMITH

281.726.1299

boone.smith@streamrealty.com

