

LAND FOR SALE

0 SANDERFER ROAD, BUNNLEVEL, NC 28323

±40.32 AC

SCOTT HADLEY
Vice President, Principal
919.906.0524
shadley@lee-associates.com

 **LEE & ASSOCIATES**
COMMERCIAL REAL ESTATE SERVICES
RALEIGH • DURHAM • WILMINGTON

PROPERTY SUMMARY

PROPERTY DESCRIPTION

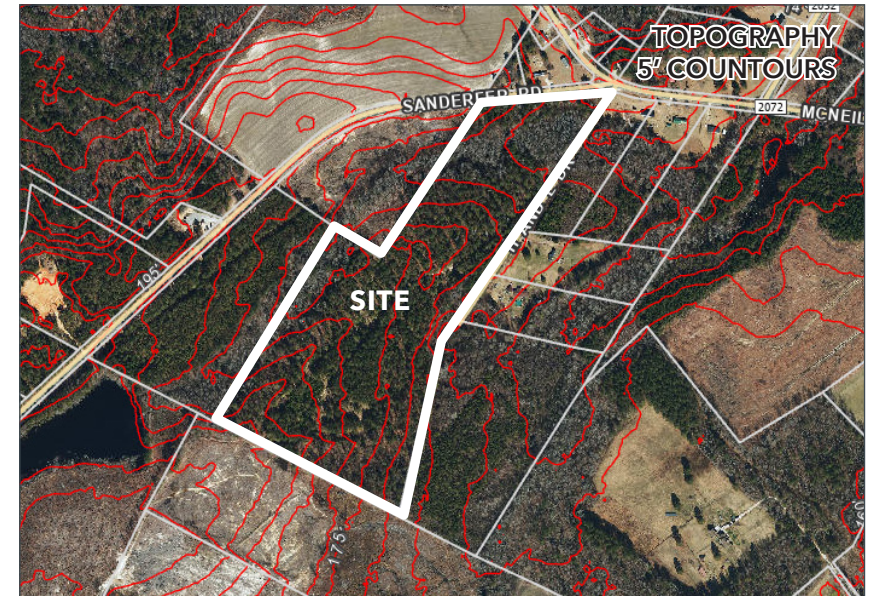
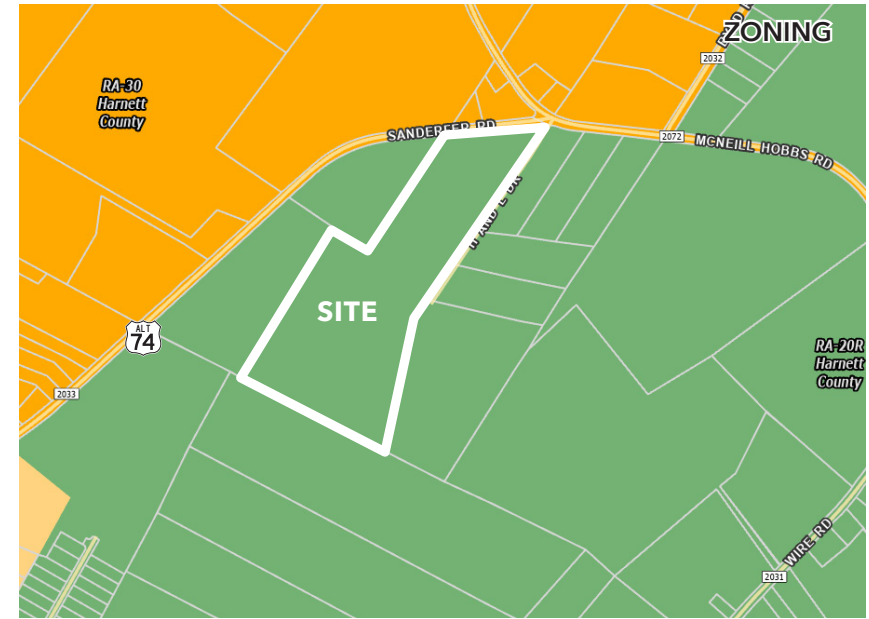
Located at the corner of McNeil Hobbs and Sander Rd. in Harnett County between Erwin and Bunnlevel. The property consists of ±40.32 Acres of relatively flat land in an area of primarily timber and farm land. Great recreational property with easy access to the Triangle area.

PROPERTY HIGHLIGHTS

- » ±40.32 Acres
- » PIN#: 0557-90-0284.000
- » Great Recreational tract with timber onsite
- » Residential development is occurring nearby
- » Well and septic for water and sewer
- » Zoned RA-20R

PRICED TO SELL

- » \$8,500/acre



LAND FOR SALE • 0 SANDERFER ROAD • BUNNLEVEL, NC

REGIONAL OVERVIEW



DEMOGRAPHICS

	1 MILE	3 MILES	5 MILES
Population (2025)	244	2,147	7,539
Daytime Population	167	1,645	5,491
Total Businesses	7	37	123
Total Employees	30	207	1,966
Average Household Income	\$80,495	\$78,088	\$80,763

ABOUT ROBESON COUNTY, NC

- » Located in Harnett County, Bunnlevel benefits from a strategic position within the Fayetteville-Fort Liberty regional market and a growing industrial corridor in central North Carolina.
- » Bunnlevel is situated near the interchange of I-95 and NC Highway 87, offering direct north-south connectivity along the East Coast and efficient access to the Greater Fayetteville area.
- » Continued transportation and infrastructure investments along the I-95 corridor are strengthening regional logistics capabilities and supporting industrial expansion.
- » Bunnlevel is located approximately 20 miles north of Fayetteville, with convenient access to Raleigh, Durham, and the broader Research Triangle region.
- » The area supports a mix of industrial, distribution, and service-oriented users, positioning Bunnlevel as a viable option for commercial and light industrial development.



LAND FOR SALE • 0 SANDERFER ROAD • BUNNLEVEL, NC