

FOR LEASE

Peachtree Corners Office Headquarters

3495 HOLCOMB BRIDGE ROAD

Peachtree Corner, GA 30092

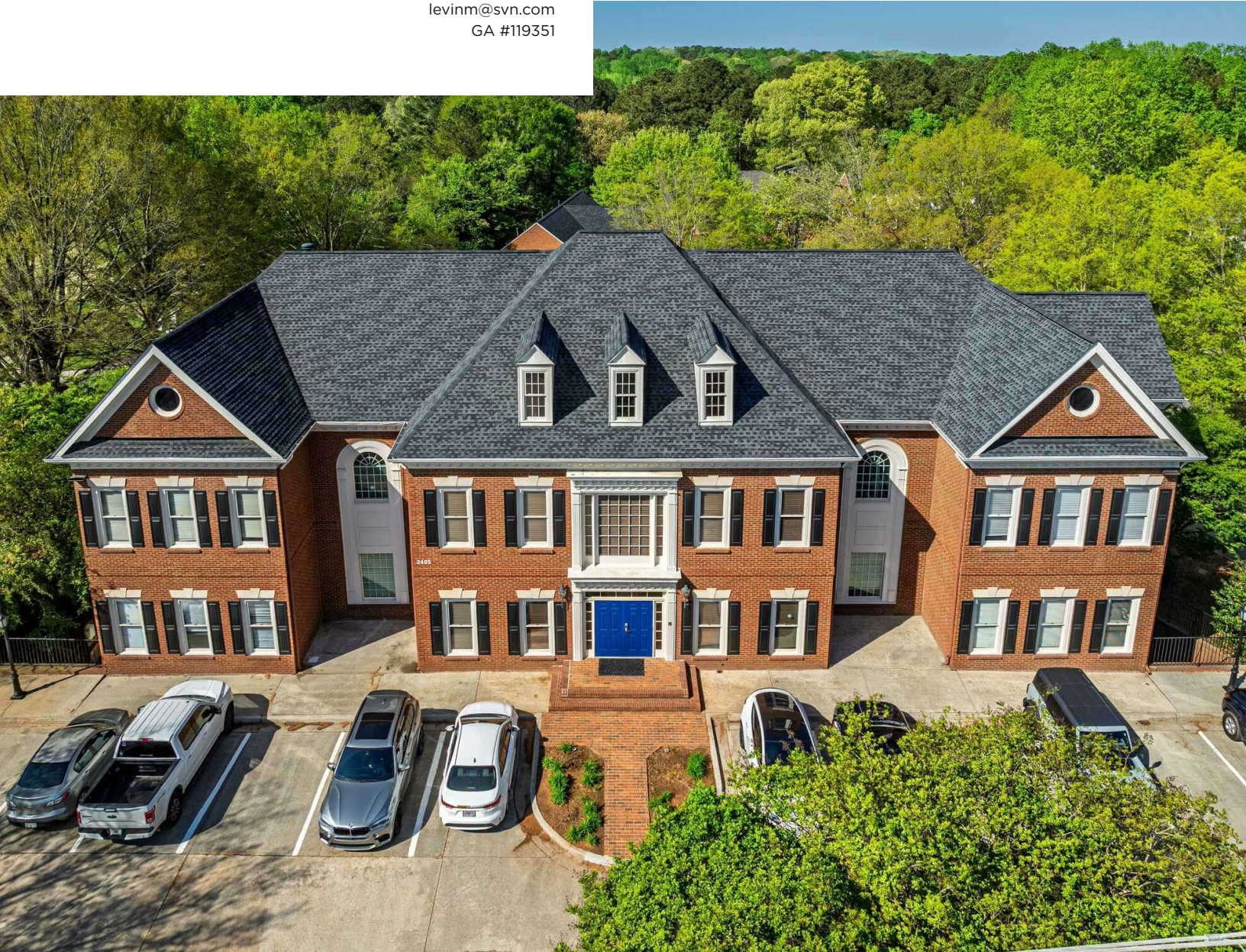
PRESENTED BY:

MATTHEW LEVIN, CCIM

O: 770.209.1700

levinm@svn.com

GA #119351



PROPERTY DETAILS & HIGHLIGHTS

BUILDING NAME	Peachtree Corners Office Headquarters For Lease
ADDRESS	3495 Holcomb Bridge Rd, Peachtree Corners, GA 30092
BUILDING SIZE	16,497 RSF+-
AVAILABLE SPACES	5,499 / 10,988 / 16,497
RENT	\$15.75 SF NNN
ELEVATOR SERVED	Yes
FREESTANDING	Yes
NUMBER OF FLOORS	3
AVERAGE FLOOR SIZE	5,499 SF

For lease is a three story 16,497 SF+- elevator served headquarters office building in growing Peachtree Corners, offering businesses a branding opportunity with prominent signage, over 200 feet of frontage and exposure to over 41,000 vehicles per day. Each well-lit floor is a flexible combination of open plan and private offices. The site accommodates 80 parking spaces, a high ratio of 4.8 spaces per 1,000 SF. Spaces are available as 5,499 SF+-, 10,988 SF+- or 16,497 SF+-.

Holcomb Bridge Road is a major east-west artery connecting Cobb, Fulton, Gwinnett and Dekalb counties. The pivotal location provides convenient access to GA 400 (7 miles), I-285 & I-85 (6 miles), Peachtree Industrial Boulevard and Peachtree Parkway.



- Headquarters office for lease 5,499 RSF+- to 16,497 RSF+-
- Three story elevator served office with 80 parking spaces
- Available as 5,499 RSF / 10,988 SF / 16,497 SF
- Each floor a flexible combination of open plan and private offices
- Abundant 80 parking spaces / 4.8 per 1,000 SF
- Branding opportunity 200+ feet of frontage visible by 41,000+ vehicles per day
- 4 lane major east-west artery connecting Cobb, Gwinnett, Fulton and Dekalb counties
- Growing Peachtree Corners location
- 7 miles to GA 400 / 6 miles to I-285 & I-85

MATTHEW LEVIN, CCIM
O: 770.209.1700
levinm@svn.com
GA #119351

ADDITIONAL PHOTOS



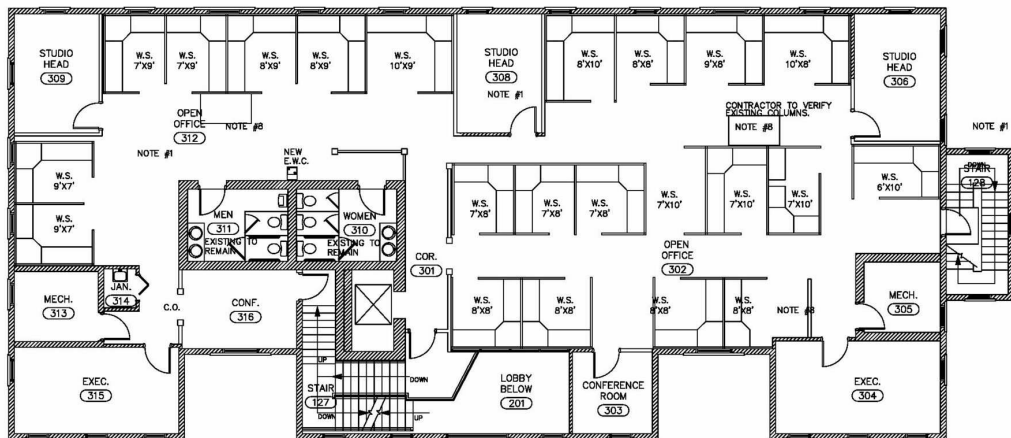
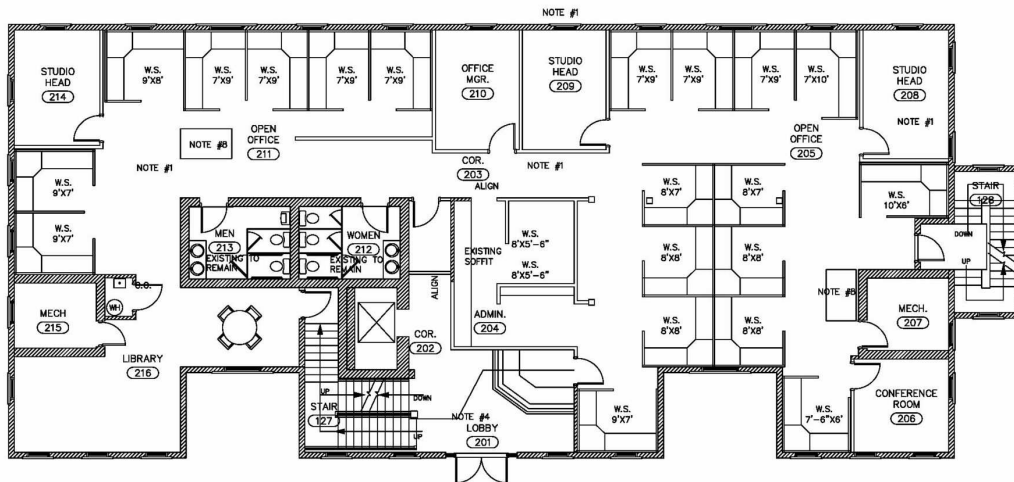
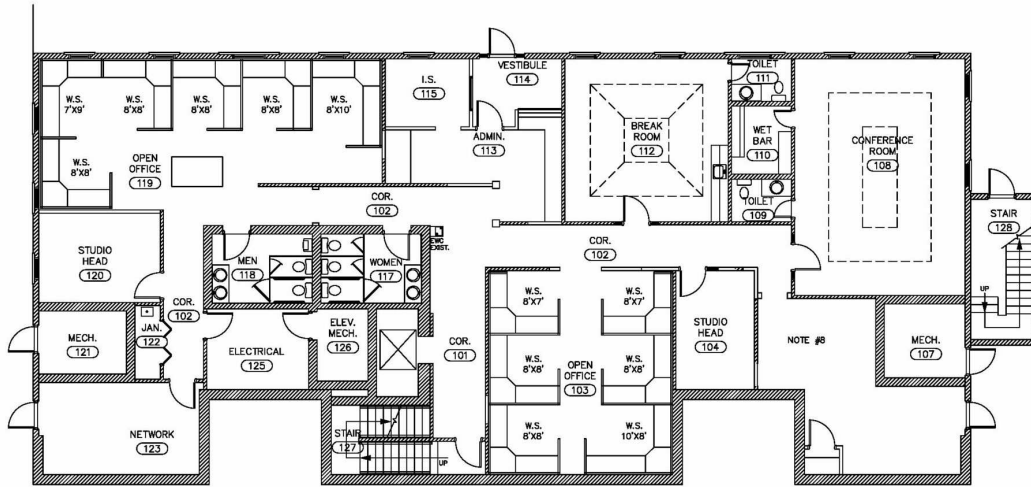
MATTHEW LEVIN, CCIM
O: 770.209.1700
levinm@svn.com
GA #119351

ADDITIONAL PHOTOS



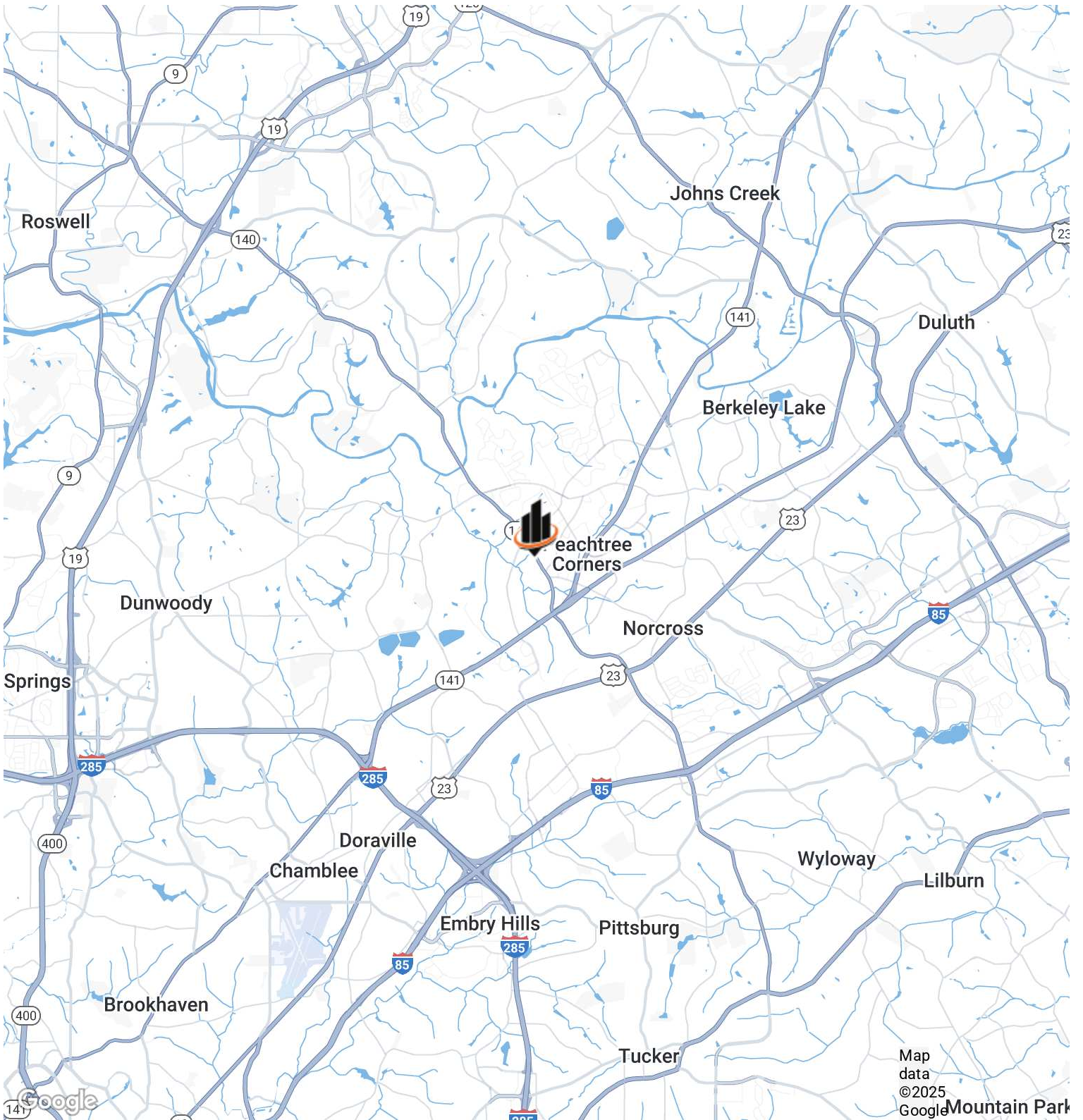
MATTHEW LEVIN, CCIM
O: 770.209.1700
levinm@svn.com
GA #119351

FLOOR PLANS



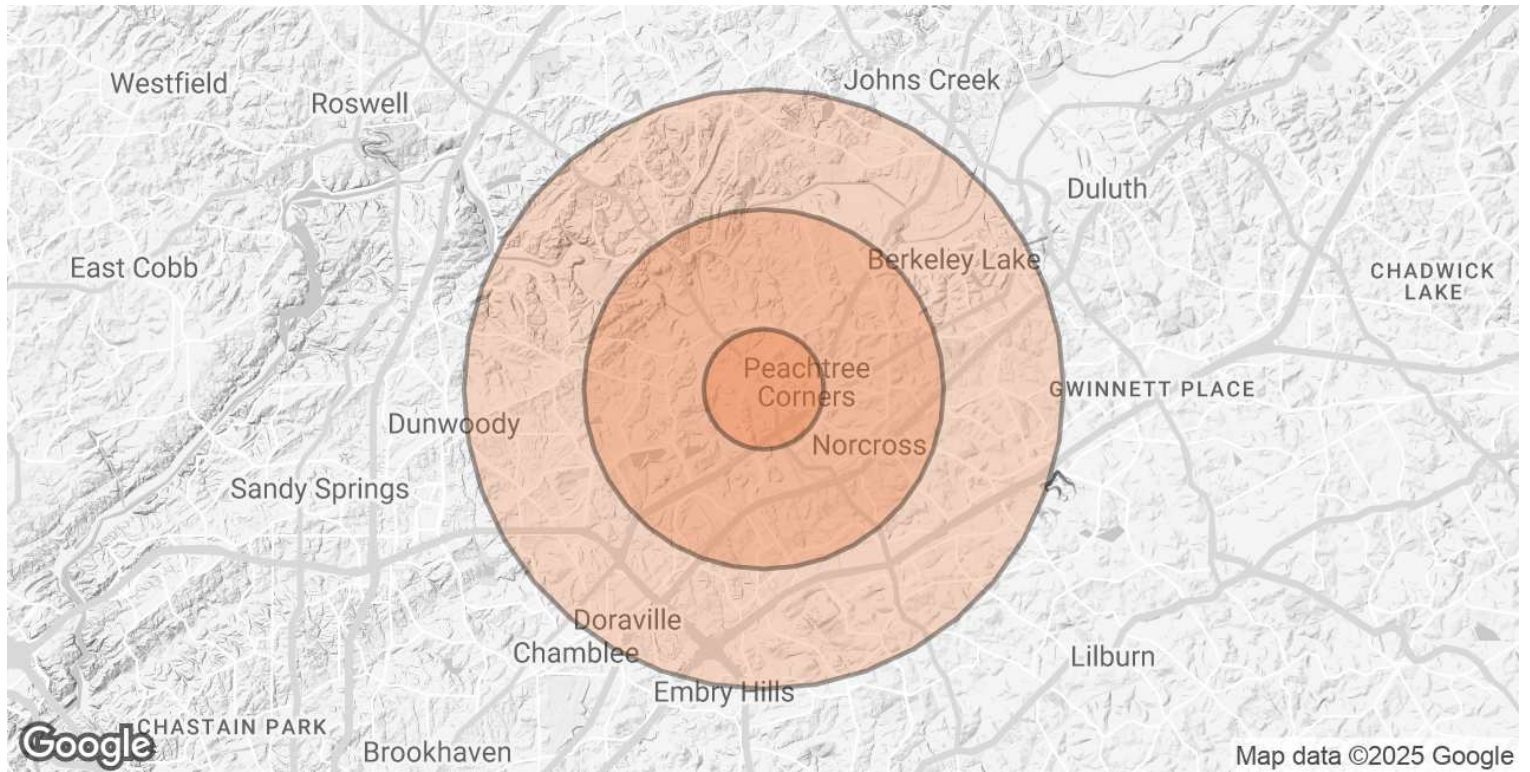
MATTHEW LEVIN, CCIM
 O: 770.209.1700
 levinm@svn.com
 GA #119351

MAP



MATTHEW LEVIN, CCIM
O: 770.209.1700
levinm@svn.com
GA #119351

DEMOGRAPHICS MAP & REPORT



POPULATION	1 MILE	3 MILES	5 MILES
TOTAL POPULATION	16,543	79,189	225,078
AVERAGE AGE	36	38	38
AVERAGE AGE (MALE)	35	38	37
AVERAGE AGE (FEMALE)	37	39	39
HOUSEHOLDS & INCOME	1 MILE	3 MILES	5 MILES
TOTAL HOUSEHOLDS	7,461	30,363	84,397
# OF PERSONS PER HH	2.2	2.6	2.7
AVERAGE HH INCOME	\$75,328	\$123,699	\$129,007
AVERAGE HOUSE VALUE	\$419,184	\$522,183	\$505,606

Demographics data derived from AlphaMap

MATTHEW LEVIN, CCIM
 O: 770.209.1700
 levinm@svn.com
 GA #119351

ADVISOR BIO



MATTHEW LEVIN, CCIM

Senior Advisor

levinm@svn.com

Direct: **770.209.1700** | Cell: **678.467.9658**

GA #119351

PROFESSIONAL BACKGROUND

Matthew J. Levin, CCIM, serves as a Senior Advisor for SVN, focusing on the sale and leasing of retail, office and industrial properties. With over 25 years experience in the real estate industry, he has completed over 500 transactions valued at \$300 million. Matthew is a multi-year recipient of the Partner Circle Award, SVN's highest recognition, and consistently performs in the top 100 of advisors nationally.

Prior to joining SVN, Matthew served as President of Dekalb Realty Company. Previously, he served as a \$250 million Commercial Real Estate Non-Performing Loan Portfolio Manager for the Federal Deposit Insurance Corporation (FDIC).

Matthew is a Phoenix Award recipient of the Atlanta Commercial Board of Realtors' Million Dollar Club. He is past president of the Georgia State University, Real Estate Alumni Group, and past chairman of the Scholarship Committee of the Georgia Chapter of CCIM.

Matthew received his Bachelor of Arts from Emory University and Master of Science degree in Real Estate from Georgia State University.

He lives with his wife of over 23 years Valerie and daughter Camille. Matthew is an avid sailor having first learned from his father. "Sailing is much like life, you're heading for a destination and the changes in weather, wind and current require anticipation, attention and adjustment. Getting there can be as interesting as arriving."

SVN | Interstate Brokers

3456 Hardee Ave
Atlanta, GA 30341
404.303.1232

MATTHEW LEVIN, CCIM

O: 770.209.1700

levinm@svn.com

GA #119351