



SAN FRANCISCO, CA 94107

FOR SUBLEASE | 7,067 SF AVAILABLE

1501 Vermont St.

Mission / Potrero Plug & Play Creative Office
Entire 2nd Floor - 3 Sides of Sunny Windowline
28 Car Parking Lot + Rollup Door Access

CHARLIE CUTLER | charlie@calco-sf.com | 415.850.4935 | DRE #2026787

DAULTON JEFFERIES | daulton@calco-sf.com | 209.326.2358 | DRE #02261417

LIV MASON | liv@calcosf.com | 650.787.2364 | DRE #02245475

PROPERTY SUMMARY

| 1501 Vermont St.

PROPERTY HIGHLIGHTS

- 6,000 SF 2nd FL creative office
- Two (2) large open workspaces
- Five (5) meeting rooms
- Eat-in kitchenette
- Additional storage area
- Access to large automatic dock high roll up door
- On-site parking available
- Floor-to-ceiling windows providing abundant natural light
- Soaring ceilings
- Operable windows
- Direct freeway access
- Rear yard
- Property ideally located along the borders of Potrero Hill, the Mission, and Bayshore Corridor
- High credit Sublandlord
- Perfect for a wide range of users: creative office, robotics, R&D
- Flexible terms
- Available immediately



GALLERY

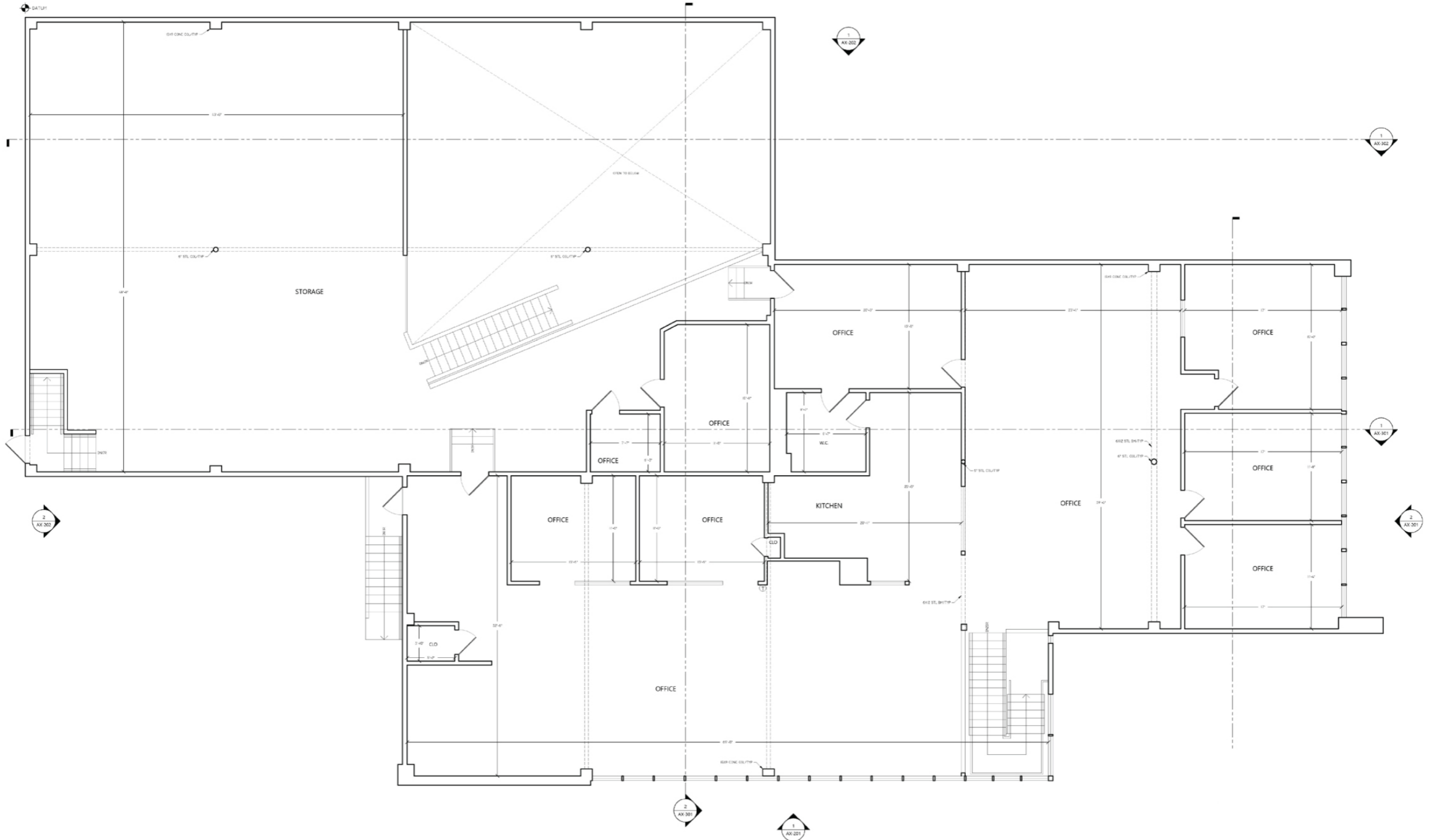
| 1501 Vermont St.

 **CALCO**
COMMERCIAL, INC.



FLOORPLAN

| 1501 Vermont St.



1 EXISTING SECOND LEVEL FLOOR PLAN
7367 SQFT GROSS MEASURED AREA
71 SQFT MEASURED EXTERIOR SURFACES

PARKING PLAN

| 1501 Vermont St.



LOCATION OVERVIEW

| 1501 Vermont St.

Located at the intersection of two of San Francisco's most popular Live/Work neighborhoods: Mission District & Potrero Hill, surrounded by popular cafes, local retail, parks, and residential communities, with easy access to Downtown, Mission Bay, and major transit corridors.



- 03 MIN to Potrero Hill
- 05 MIN to Mission District retail & dining
- 08 MIN to Jackson Playground
- 10 MIN to 24th St BART Station



- 05 MIN to Mission Bay
- 08 MIN to SoMa
- 10 MIN to Financial District
- 12 MIN to Chase Center



- 01 MIN to US-101 On-Ramp
- 04 MIN to I-280 On-Ramp
- 06 MIN to Bayshore Corridor





CHARLIE CUTLER

Partner
Email: charlie@calcosf.com
Cell: 415.850.4935
DRE #2026787

DAULTON JEFFERIES

Associate
Email: daulton@calcosf.com
Cell: 209.326.2358
DRE #02261417

**PIONEERING REAL ESTATE
SOLUTIONS WITH
PROVEN EXPERTISE**

LIV MASON

Associate
Email: liv@calco-sf.com
Cell: 650.787.2364
DRE #02245475

Calco Commercial, founded in 2011 by Scott Mason, brings over 35 years of experience and 2,500+ transactions, totaling over \$2.2 billion in sales and leases. Specializing in leasing and sales of commercial real estate in the San Francisco Bay Area and nationwide, we consistently rank as a top-producing firm. With deep knowledge of the Bay Area market, our team offers clients over three decades of expertise and exceptional customer service, providing the tools and guidance to navigate the ever-changing commercial real estate landscape.