

PROPERTY DETAILS

- Fully Refurbished June 15, 2026
- 2,080 SF Available
- **\$1.50/SF Gross (\$3,120.00) Per Month**
- 10' x 10' GL Door
- 15' Clear Height
- 200 Amp, 240 V, 3 Phase Power
- 320 SF of Office Space (Reception & Private)
- HVAC in Office
- 400 SF Bonus Mezzanine
- Professionally Managed Business Park
- Common Area Maintenance Fee:
\$.10/SF (\$208.00) Per Month

VIRTUAL TOUR

CLICK HERE



LOCAL EXPERTISE. INTERNATIONAL REACH. WORLD CLASS.

Max P. Eddy

Sr. Associate | DRE# 02163858

P: +1(562) 354-2538

E: meddy@leelalb.com

Brandon Carrillo

Principal | DRE# 01745362

P: +1(562) 354-2510

E: bcarrillo@leelalb.com

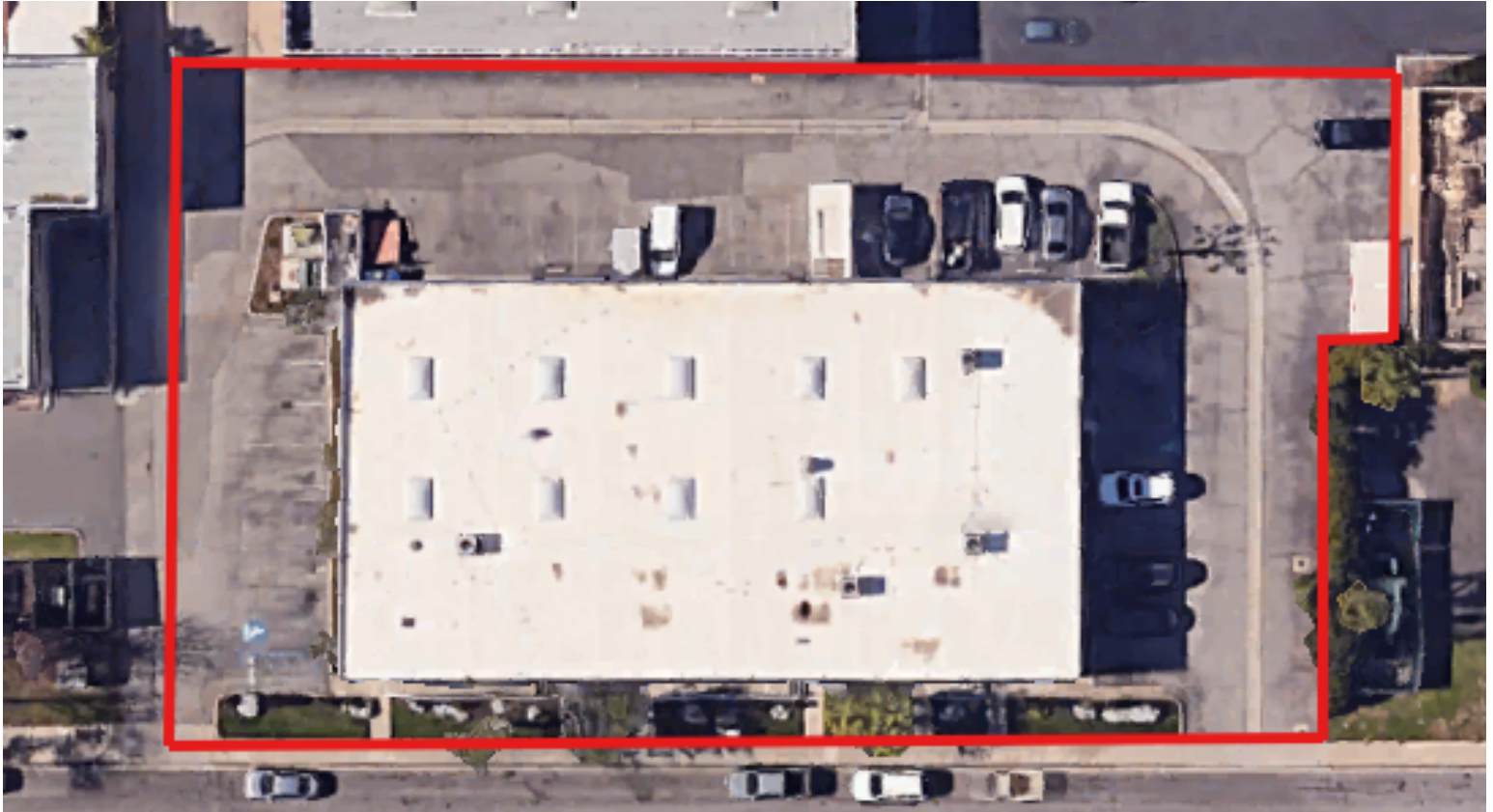
Garrett Massaro SIOR

Principal | DRE# 01771471

P: +1(562) 354-2516

E: gmassaro@leelalb.com

Copyright © Lee & Associates. All rights reserved. No part of this work may be reproduced or distributed without written permission of the copyright owner. The information contained in this report was gathered by Lee & Associates from sources believed to be reliable. Lee & Associates, however, makes no representation concerning the accuracy or completeness of such information and expressly disclaims any responsibility for any inaccuracy contained herein.



LOCAL EXPERTISE. INTERNATIONAL REACH. WORLD CLASS.

Max P. Eddy

Sr. Associate | DRE# 02163858

P: +1(562) 354-2538

E: meddy@leelalb.com

Brandon Carrillo

Principal | DRE# 01745362

P: +1(562) 354-2510

E: bcarrillo@leelalb.com

Garrett Massaro ^{SIOR}

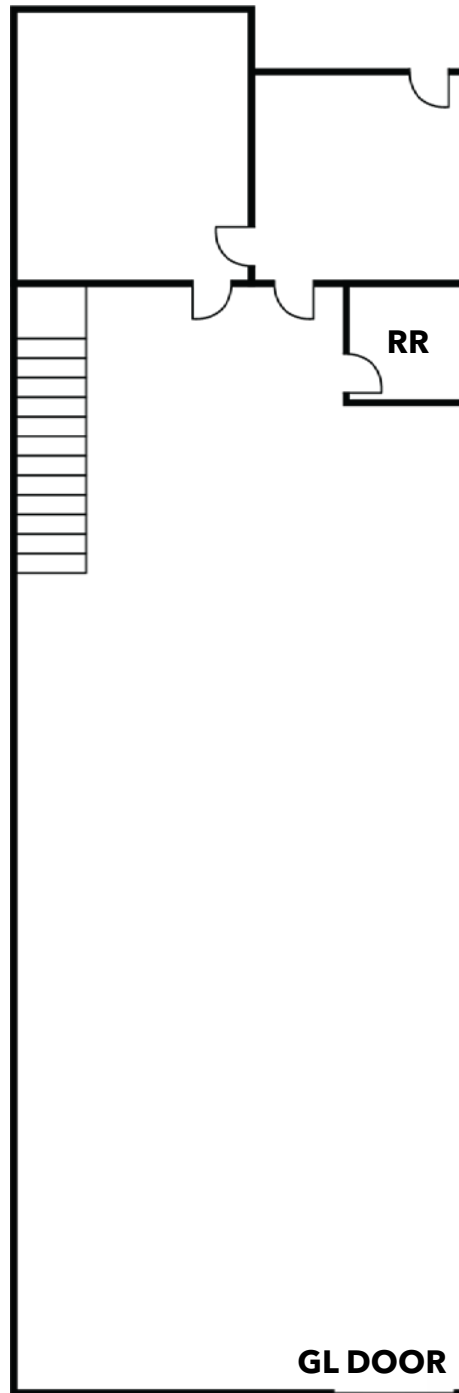
Principal | DRE# 01771471

P: +1(562) 354-2516

E: gmassaro@leelalb.com

Copyright © Lee & Associates. All rights reserved. No part of this work may be reproduced or distributed without written permission of the copyright owner. The information contained in this report was gathered by Lee & Associates from sources believed to be reliable. Lee & Associates, however, makes no representation concerning the accuracy or completeness of such information and expressly disclaims any responsibility for any inaccuracy contained herein.

FLOOR PLAN



This plan and its measurements are approximate and not up to scale. It is the responsibility of the buyer/lessor to verify the property's measurements independently.

LOCAL EXPERTISE. INTERNATIONAL REACH. WORLD CLASS.

Max P. Eddy

Sr. Associate | DRE# 02163858

P: +1(562) 354-2538

E: meddy@leelalb.com

Brandon Carrillo

Principal | DRE# 01745362

P: +1(562) 354-2510

E: bcarrillo@leelalb.com

Garrett Massaro ^{SIOR}

Principal | DRE# 01771471

P: +1(562) 354-2516

E: gmassaro@leelalb.com

Copyright © Lee & Associates. All rights reserved. No part of this work may be reproduced or distributed without written permission of the copyright owner. The information contained in this report was gathered by Lee & Associates from sources believed to be reliable. Lee & Associates, however, makes no representation concerning the accuracy or completeness of such information and expressly disclaims any responsibility for any inaccuracy contained herein.