

PROPERTY DETAILS

- Unit 206: 11,623 SF
- 1,032 SF of Office
- Rental Rate: \$19.00 NNN
- Est. 2026 CAM: \$6.61PSF
- 2 dock high doors
- 1 grade level door
- Ceiling Height: 28' clear
- Zoning: I1 - General Industrial (City of Fort Lauderdale)
- Parking Ratio: 1.08/1,000 SF
- Strategically located just east of I-95 between Sunrise Blvd. and Oakland Park Blvd. providing easy access to all of south

ABOUT PROPERTY



**PRICE**  
\$19.00 NNN



**YEAR BUILT**  
1987



**AVAILABLE SF**  
11,623 SF



**PARKING**  
1.08/1,000 SF



**LOCATION**  
Fort Lauderdale

For more information:

Keith R. Graves, CCIM, SIOR

Jonathan Thiel

Daniel Forman

954.652.2031 | Kgraves@Bergercommercial.Com

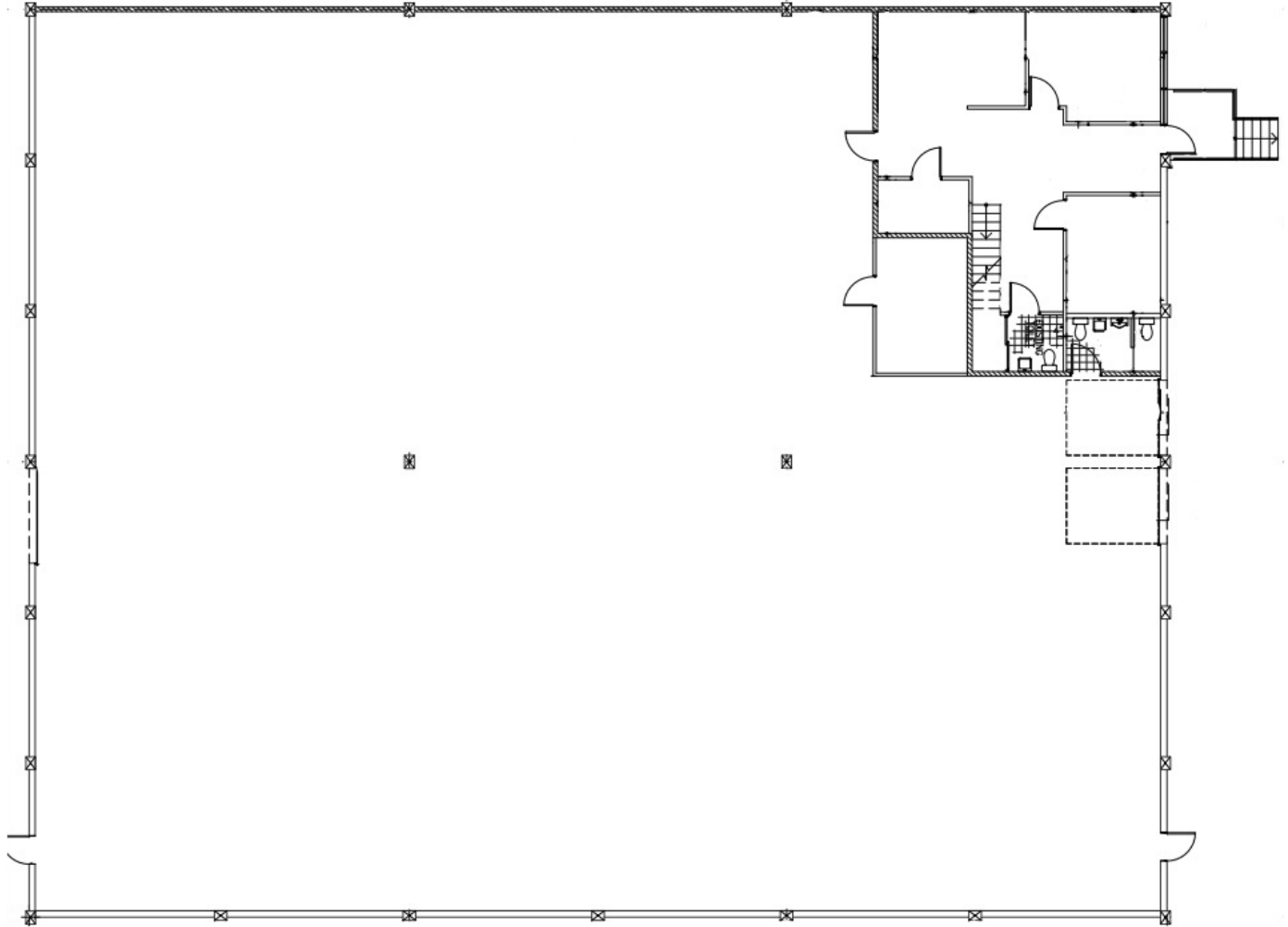
954.652.2020 | Jthiel@Bergercommercial.Com

954.652.2004 | Dforman@Bergercommercial.Com

bergercommercial.com



COMMERCIAL BROKERAGE AND PROPERTY MANAGEMENT



For more information:

Keith R. Graves, CCIM, SIOR

Jonathan Thiel

Daniel Forman

954.652.2031 | [Kgraves@Bergercommercial.Com](mailto:Kgraves@Bergercommercial.Com)

954.652.2020 | [Jthiel@Bergercommercial.Com](mailto:Jthiel@Bergercommercial.Com)

954.652.2004 | [Dforman@Bergercommercial.Com](mailto:Dforman@Bergercommercial.Com)

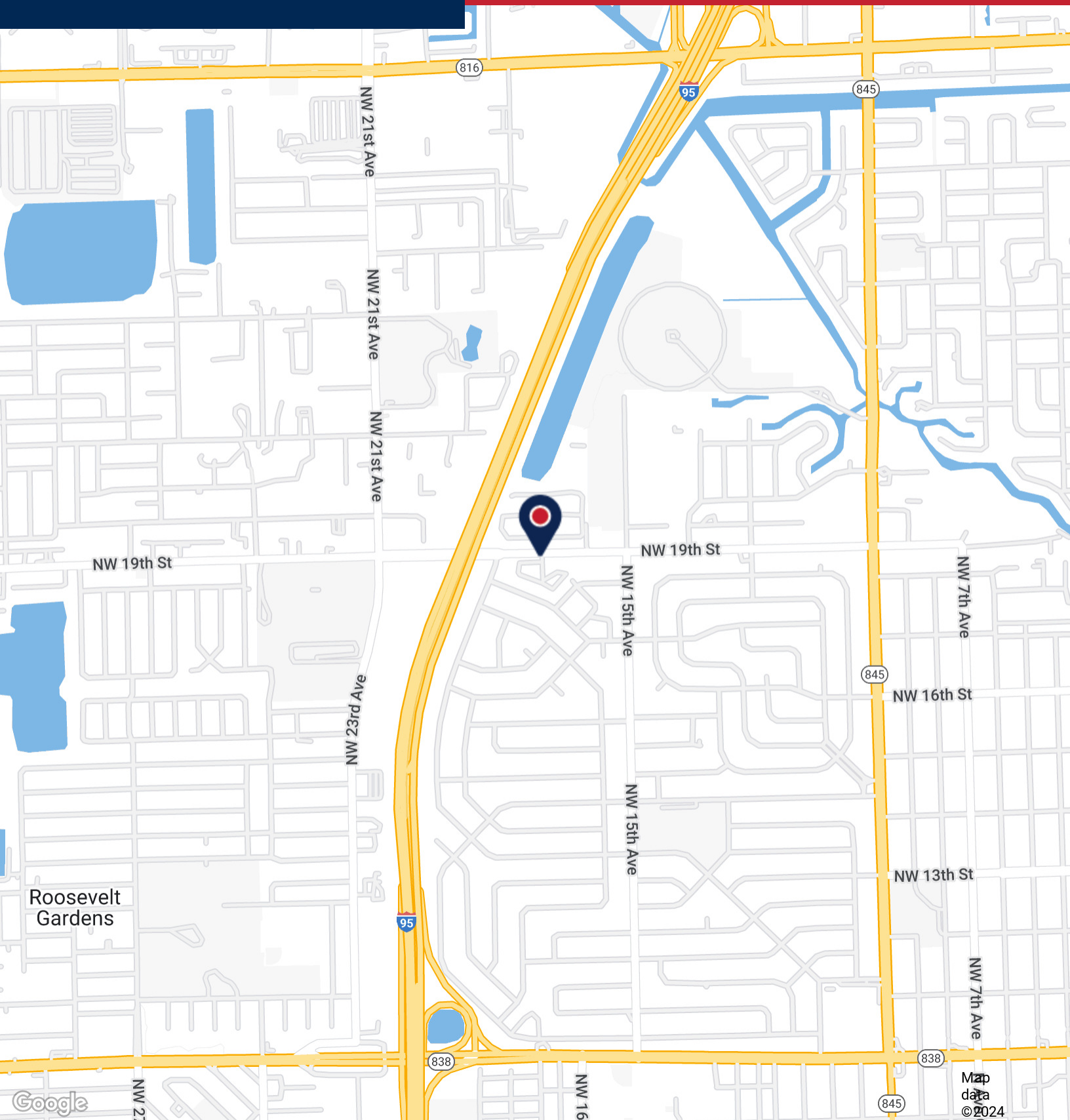
[bergercommercial.com](http://bergercommercial.com)



COMMERCIAL BROKERAGE AND PROPERTY MANAGEMENT

# PARKWAY COMMERCE CENTER

# LOCATION MAP



For more information:

Keith R. Graves, CCIM, SIOR

Jonathan Thiel

Daniel Forman

954.652.2031 | [kgraves@Bergercommercial.com](mailto:kgraves@Bergercommercial.com)

954.652.2020 | [jthiel@Bergercommercial.com](mailto:jthiel@Bergercommercial.com)

954.652.2004 | [dforman@Bergercommercial.com](mailto:dforman@Bergercommercial.com)

[bergercommercial.com](http://bergercommercial.com)



Information furnished regarding this property is from sources deemed reliable, but no warranty or representation as to the accuracy thereof and it is submitted subject to errors, omissions, prior sale, lease or withdrawal without prior notice.