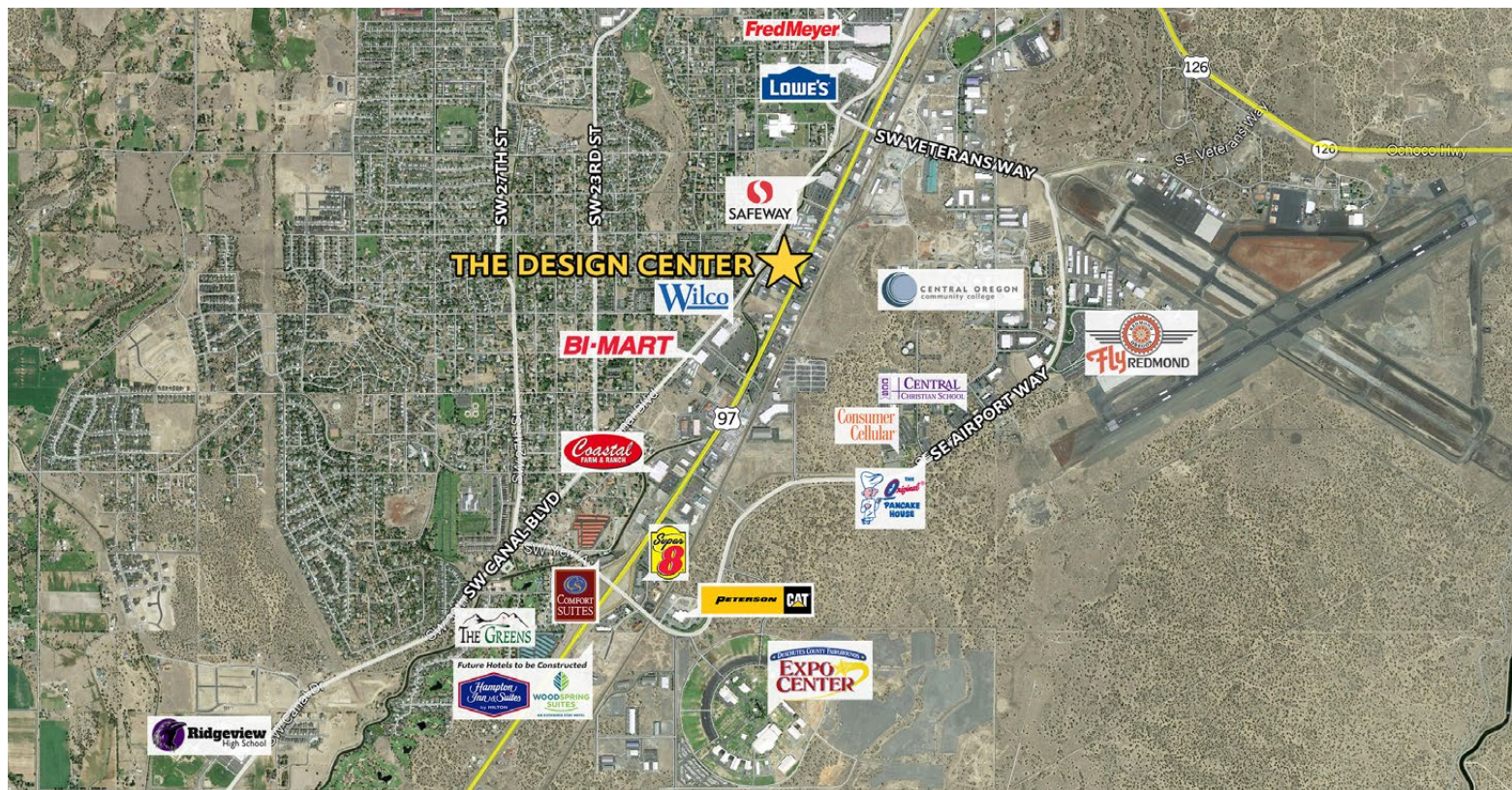


FOR LEASE

The Design Center | 2127 S Hwy 97, Redmond, OR 97756



Brokers are licensed in the state of Oregon. This information has been furnished from sources we deem reliable, but for which we assume no liability. This is an exclusive listing. The information contained herein is given in confidence with the understanding that all negotiations pertaining to this property be handled through Compass Commercial Real Estate Services. All measurements are approximate.



Russell Huntamer, CCIM
Partner, Principal Broker
Cell 541.419.2634
rh@compasscommercial.com



Jay Lyons, SIOR, CCIM
Partner, Principal Broker
Cell 541.410.6519
jlyons@compasscommercial.com



Eli Harrison
Broker
Cell 541.977.2890
eharrison@compasscommercial.com

COMPASS COMMERCIAL
REAL ESTATE SERVICES

FOR LEASE

2,000-7,160 SF

The Design Center Retail/Office Space

2127 S Hwy 97, Redmond, OR 97756



CLASS A BUILDING ON HIGHWAY 97



Russell Huntamer, CCIM | Jay Lyons, SIOR, CCIM
Eli Harrison, Broker

600 SW Columbia St., Ste. 6100 | Bend, OR 97702
541.383.2444 | www.CompassCommercial.com

COMPASS COMMERCIAL
REAL ESTATE SERVICES

FOR LEASE

\$1.75-\$2.25/SF/MO. NNN

2127 S Hwy 97, Redmond, OR 97756

The Design Center Retail/Office Space

AVAILABLE SPACES

Suite 110: 2,000 SF - 7,160 SF
Lease Rate: \$1.75-\$2.25/SF/Mo.
CAMs: Est. at \$0.45/SF/Mo.

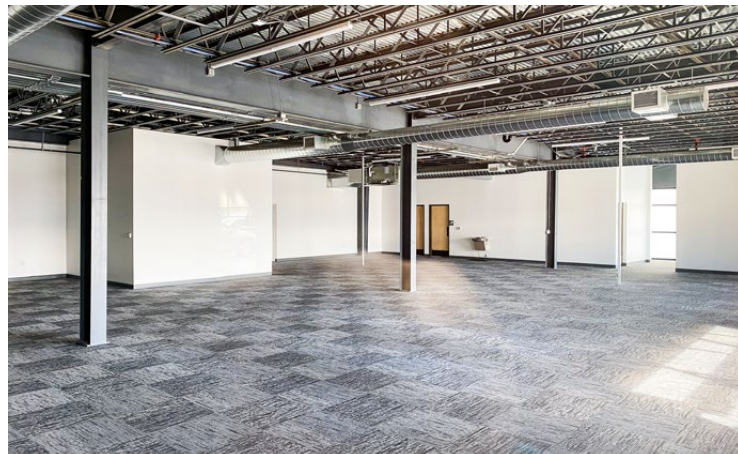
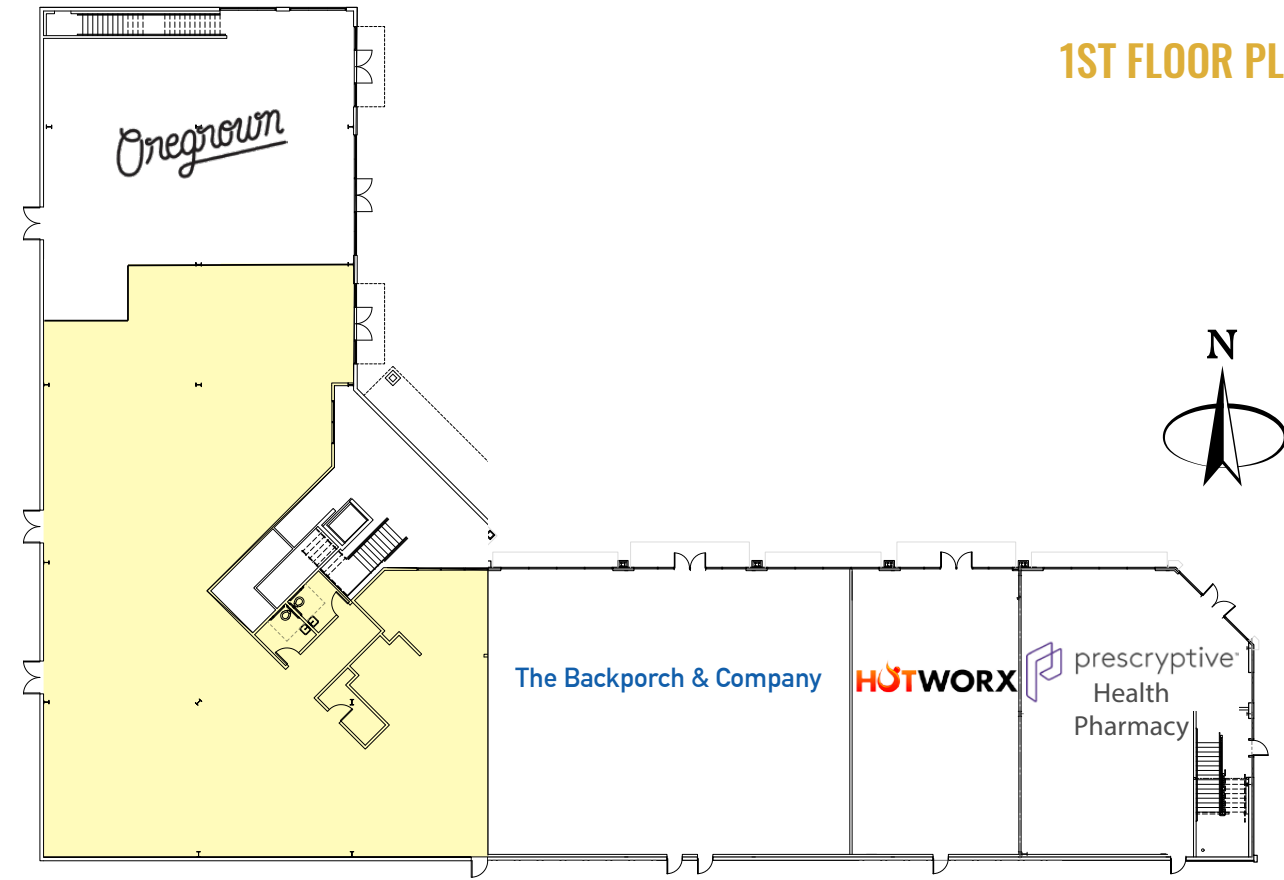
PROPERTY DETAILS

Bldg. Size: 39,464 SF
Lot Size: 1.93 Acres
Year Built: 2008
Zoning: Strip Service Commerical (C1)
Onsite Parking: 64 spaces in front
30 spaces in rear

HIGHLIGHTS

- Class A retail/office/medical building
- Excellent access and exposure on Highway 97
- Monument and facade signage
- Great retail and office mixed-use synergy
- Traffic counts exceeding 33,600 (2023 ODOT)
- Other tenants in building include Prescptive Health and Pharmacy, The Backporch and Company, Blue Sky Family Dentistry, Best Care Administrative Offices, Oregrown, and Hotworx

1ST FLOOR PLAN



SUITE 110

