



Space Available For Sublease

6400 E McDowell Rd Scottsdale, AZ 85257

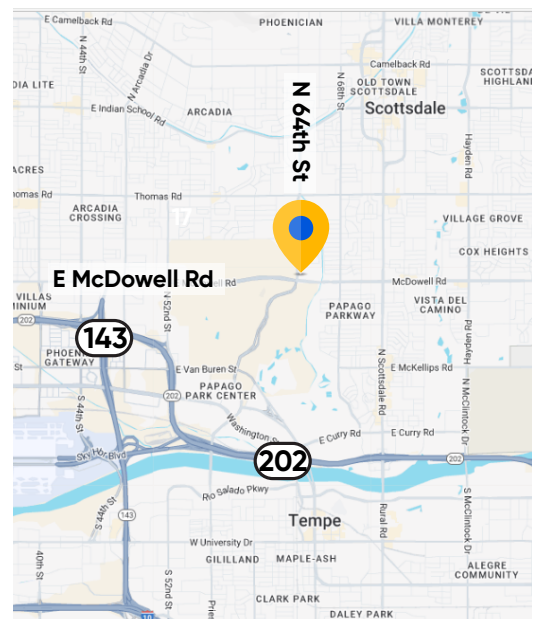
[Click Here to View Virtual Tour](#)

Overview

Submarket:	Scottsdale South Submarket
Available Space:	Suite 110 5,446 SF
Term:	Through October 31, 2030
Availability:	Immediate
Rental Rate:	\$35.00/SF, Full-Service
Parking:	4.97/1,000 SF

Property Highlights

- Tenant rooftop deck and private terraces; collaboration and conference spaces; large outdoor community area with dog park; canal access; on-site dining and coffee; bike and scooter amenities.



For more information:



Jake Bonnell
602.826.8615 mobile
jbonnell@cresa.com



Scott Maxwell
602.999.7400 mobile
smaxwell@cresa.com

Cresa

2398 E Camelback Rd. Suite 900
Phoenix, AZ 85016

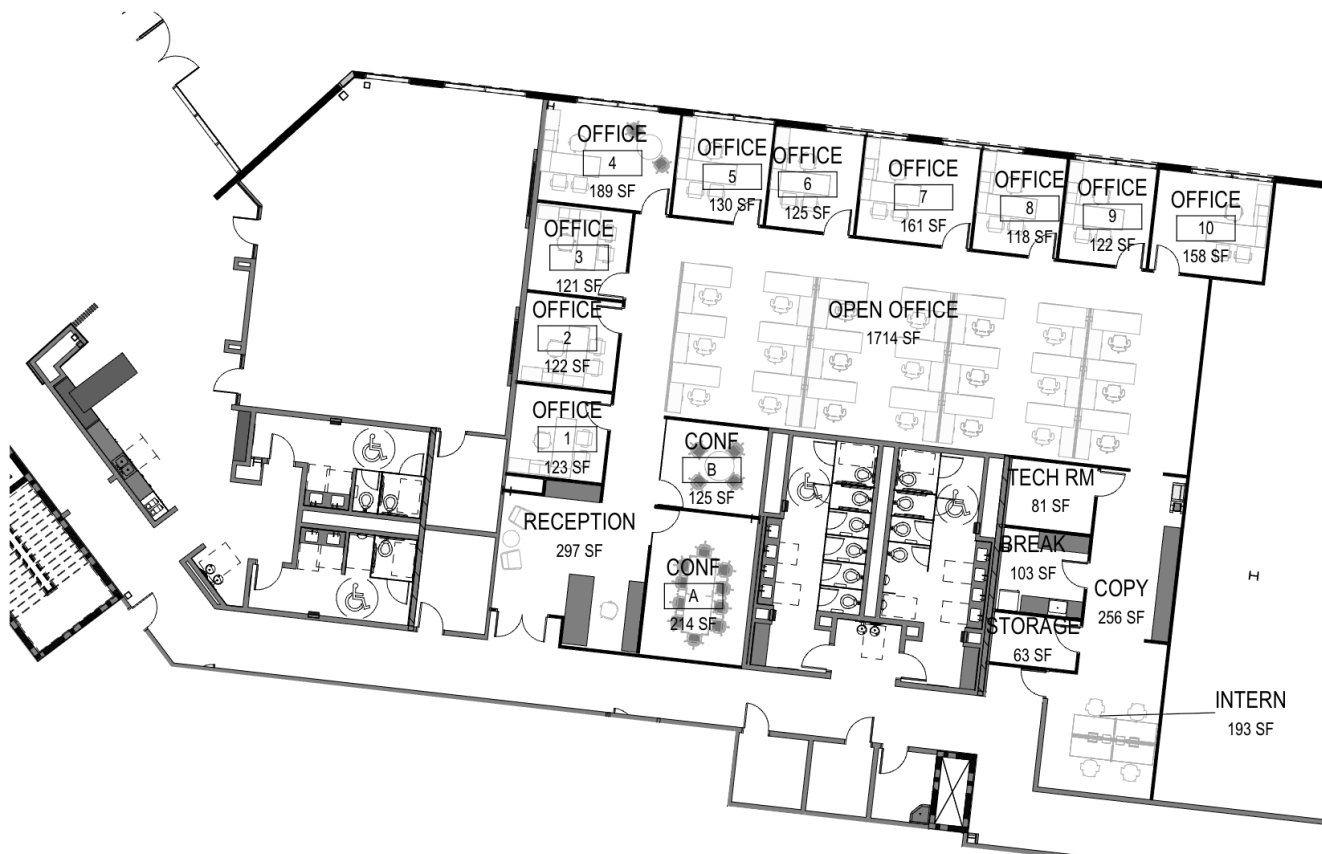
6400 E McDowell Rd

Scottsdale, AZ

[Click Here to View Virtual Tour](#)

Space Highlights

- Furniture is negotiable
- 10 offices
- 21 cubes



Cresa © 2026. All rights reserved. The information contained in this document has been obtained from sources believed reliable. While Cresa does not doubt its accuracy, Cresa has not verified it and makes no guarantee, warranty, or representation about it. It is your responsibility to independently confirm its accuracy and completeness. Any projections, opinions, assumptions or estimates used are for example only and do not represent the current or future performance of the property. The value of this transaction to you depends on tax and other factors which should be evaluated by your tax, financial and legal advisors. You and your advisors should conduct a careful, independent investigation of the property to determine to your satisfaction the suitability of the property for your needs.

Sublease Available

cresa

6400 E McDowell Rd
Scottsdale, AZ

[Click Here to View Virtual Tour](#)

