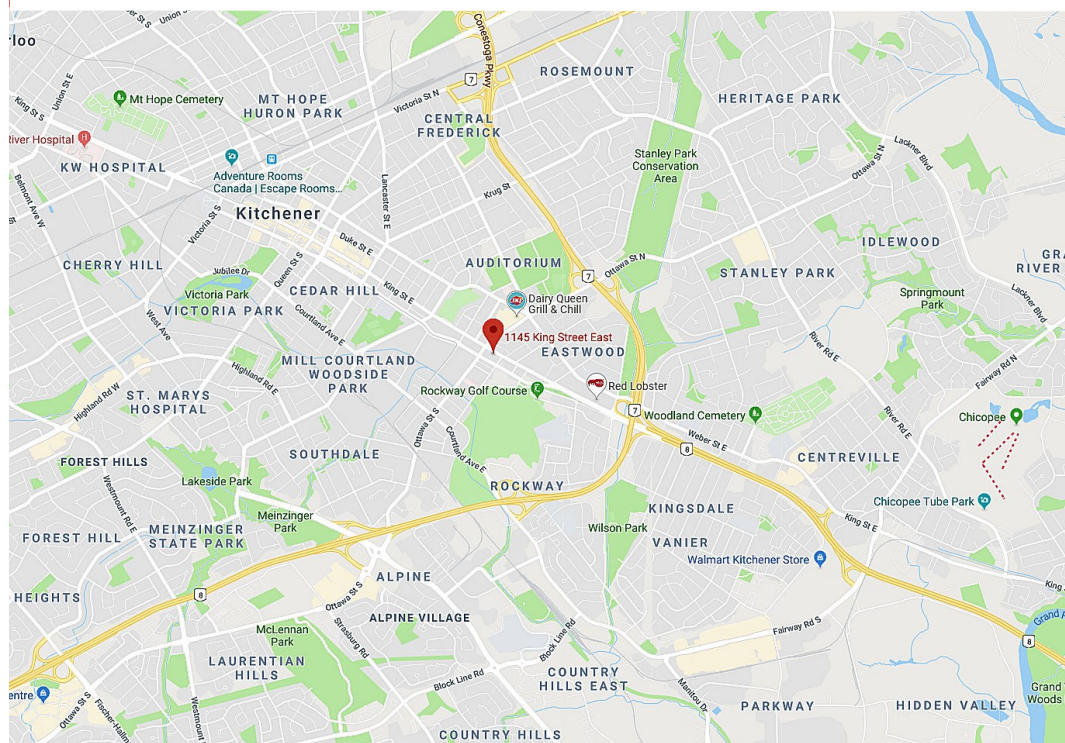


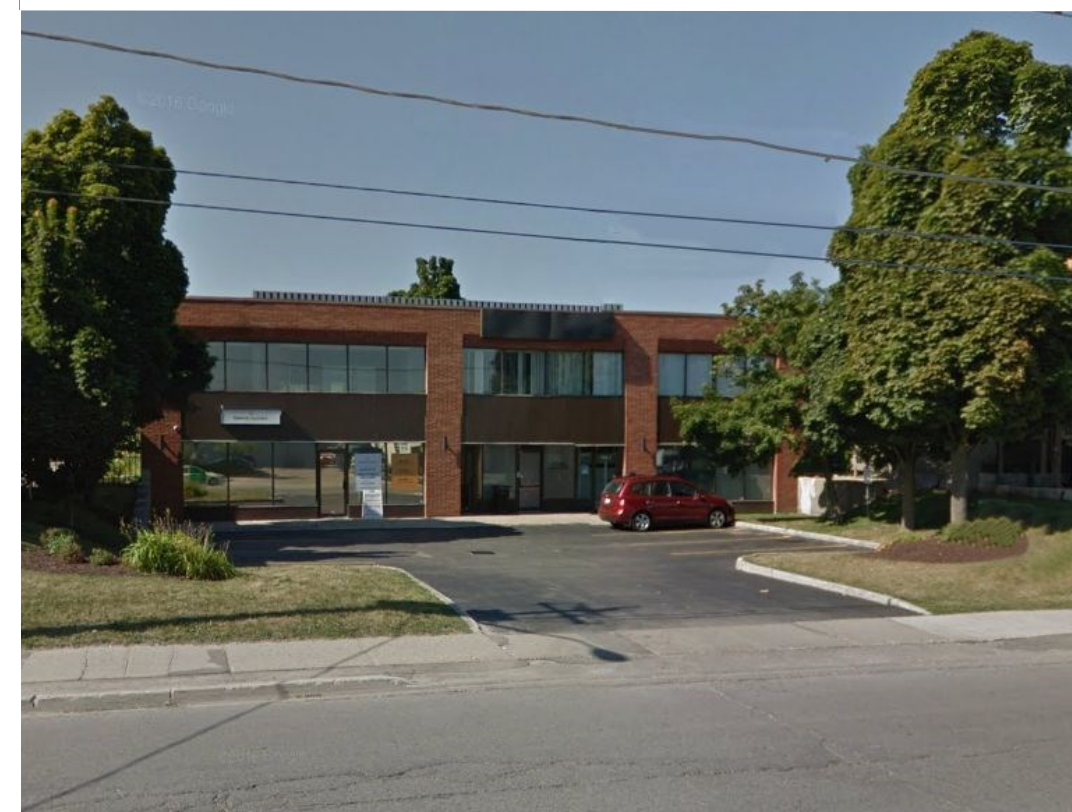
FOR LEASE DOWNTOWN OFFICE BUILDING 1145 KING STREET EAST, KITCHENER



LRT - ION route map



FOR LEASE DOWNTOWN OFFICE BUILDING 1145 KING STREET EAST, KITCHENER



Parking at rear, off Charles St E



MATT DICKSON
SALES REPRESENTATIVE
MATT@COUPALMARKOU.COM
519-742-7000 x 104

MICHAEL CONRAD
SALES REPRESENTATIVE
MIKE@COUPALMARKOU.COM
519-742-7000 x 105

COUPAL MARKOU COMMERCIAL
REAL ESTATE INC.
150 KING STREET SOUTH
WATERLOO, ONTARIO N2J 1P6
OFFICE 519-742-7000
FAX 519-742-7070

Coupal Markou
Commercial Real Estate Inc., Brokerage
www.coupalmarkou.com

This disclaimer shall apply to Coupal Markou Commercial Real Estate Inc., Brokerage, to include all employees and independent contractors. The information set out herein is for advertising purposes, and any images, assumptions, estimates and property details have been obtained from sources deemed to be reliable. No warranty or representation is made as to its accuracy, correctness and completeness of the information, being subject to errors, omissions, conditions, prior sale / lease, withdrawal or other changes without notice. The recipient of the information should conduct its own inquiries and investigations prior to placing any reliance upon the information. MLS

**AVAILABILITY
UNDER CONTRACT**
202 - 695 SQ FT
203 - 952 SQ FT

**LEASE RATE
UNDER CONTRACT**
202 - \$13.95/SQ FT NET
203 - \$12.95/SQ FT NET

ADDITIONAL RENT
\$14.67/SQ FT

ZONING
MU-3

POSSESSION
NEGOTIABLE

* Situated on King Street East, near Ottawa Street and backing onto Charles Street East

* Located steps from LRT stop in desirable Downtown Kitchener

* Fantastic light, private offices and open areas

* Professionally managed building

* Signage and on-site parking available

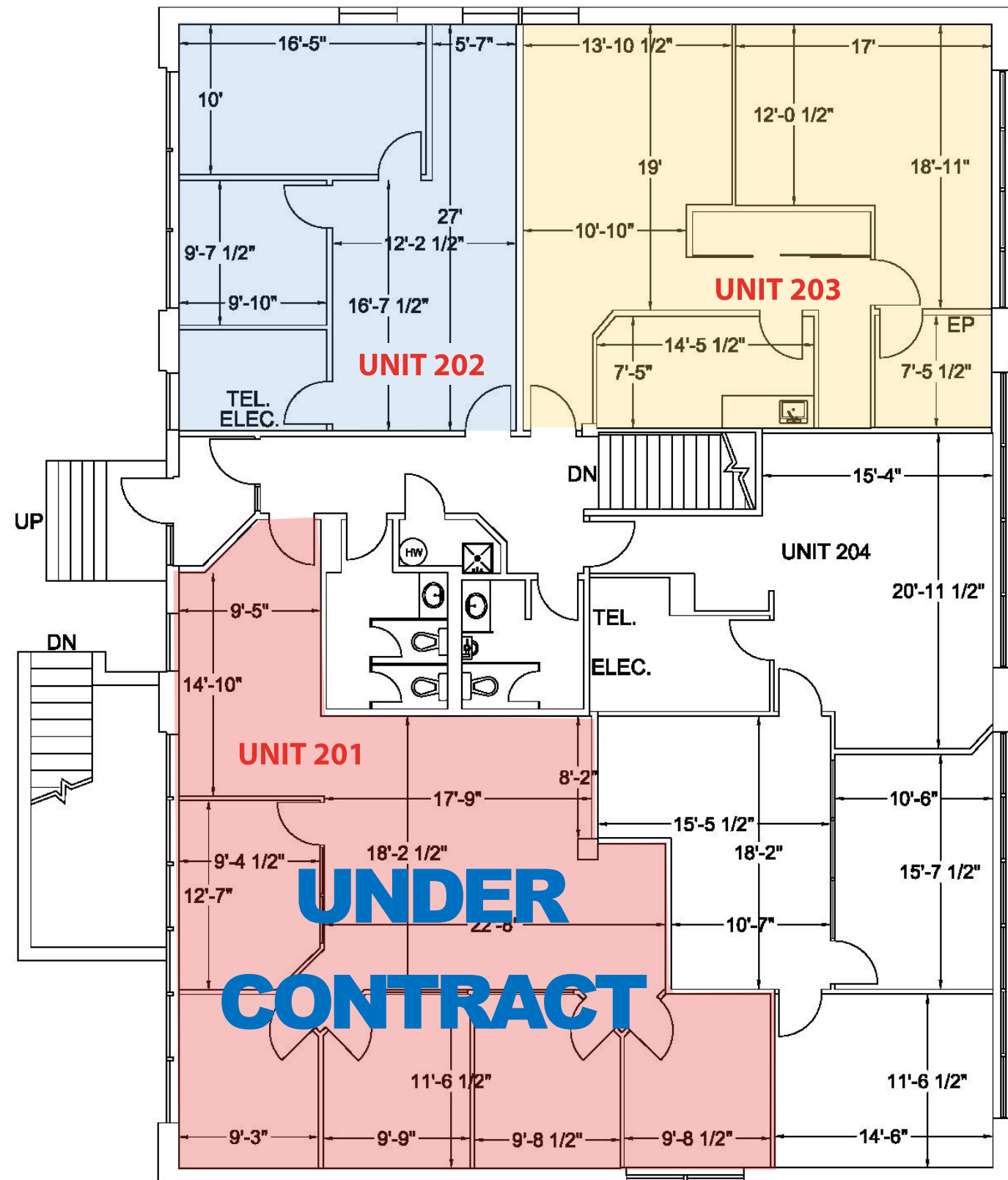
* Hydro, gas and janitorial included in additional rent

MATT DICKSON
SALES REPRESENTATIVE
MATT@COUPALMARKOU.COM
519-742-7000 x 104

MICHAEL CONRAD
SALES REPRESENTATIVE
MIKE@COUPALMARKOU.COM
519-742-7000 x 105

COUPAL MARKOU COMMERCIAL
REAL ESTATE INC.
150 KING STREET SOUTH
WATERLOO, ONTARIO N2J 1P6
OFFICE 519-742-7000
FAX 519-742-7070

Coupal Markou
Commercial Real Estate Inc., Brokerage
www.coupalmarkou.com



Unit 201 Interior



Unit 203 Interior

