

# GWINNETT 316

NORTHEAST ATLANTA  
GA-316/LAWRENCEVILLE

665 Raco Drive | Suite A  
Lawrenceville, GA 30046



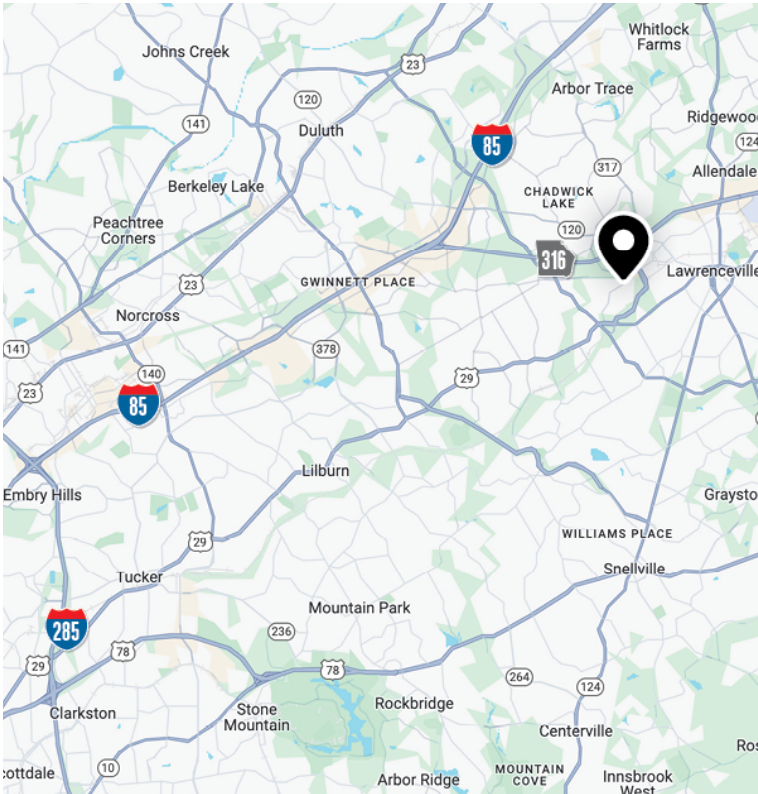
FOR LEASE

SUITE A

56,000 SF



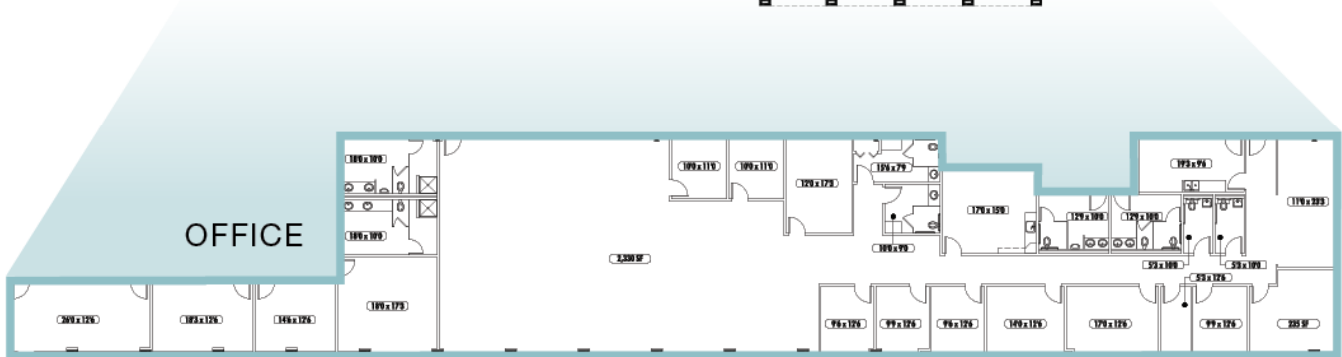
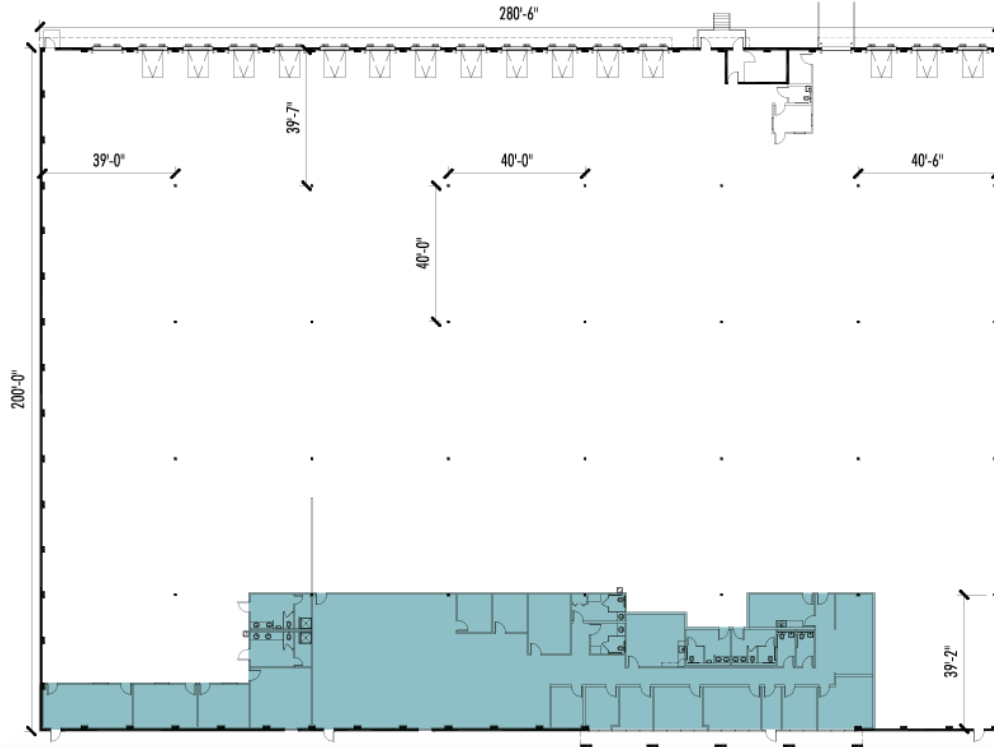
LEASED BY **NAI**BrannenGoddard



## SPECIFICATIONS

Building Size	200,000 SF
Available	56,000 SF
Office	7,988 SF
Clear Height	26'
Dock-High Doors	16
Mechanical Pit Levelers	15
Drive-In Door	1
Column Spacing	40' x 40'
Parking	1.00/1,000 SF
Sprinkler	Non-ESFR
Power	3 Phase, 600 Amps
Lighting	LED

## KEY



### SUITE A

OFFICE SF	7,988
WAREHOUSE SF	48,012
<b>TOTAL SF</b>	<b>56,000</b>



# CONTACT INFORMATION

665 Raco Drive | Suite A  
Lawrenceville, GA 30046

**Walker Adams**

wadams@naibg.com  
(404) 812-4066

**Nathan Anderson**

nanderson@naibg.com  
(404) 812-4020

**Charlie Adams**

cadams@naibg.com  
(404) 812-4037

**Griffin Price**

gprice@naibg.com  
(404) 812-4094

This document is for informational purposes only and does not constitute an offer or acceptance of a lease. Any lease agreement must be in writing and signed by the landlord. No representations or warranties are made except as expressly stated in a signed lease. Information is provided "as is" and may be subject to errors or change without notice.

