

1258 Rochester Road

Troy, MI

Outdoor Storage/Warehouse Space Available Immediately



Contact Us

Lauren Scarpace
Executive Vice President
+1 248 351 2060
lauren.scarpace@cbre.com

Eugene J. Agnone III
Senior Vice President
+1 248 351 2024
eugene.agnone@cbre.com

Blake Burstein
Senior Associate
+1 248 936 6890
blake.burstein@cbre.com

Property Features

For Sale or Lease

11,466 SF (\$6.25 NNN)

Building A

17,442 SF (\$5.75 NNN)

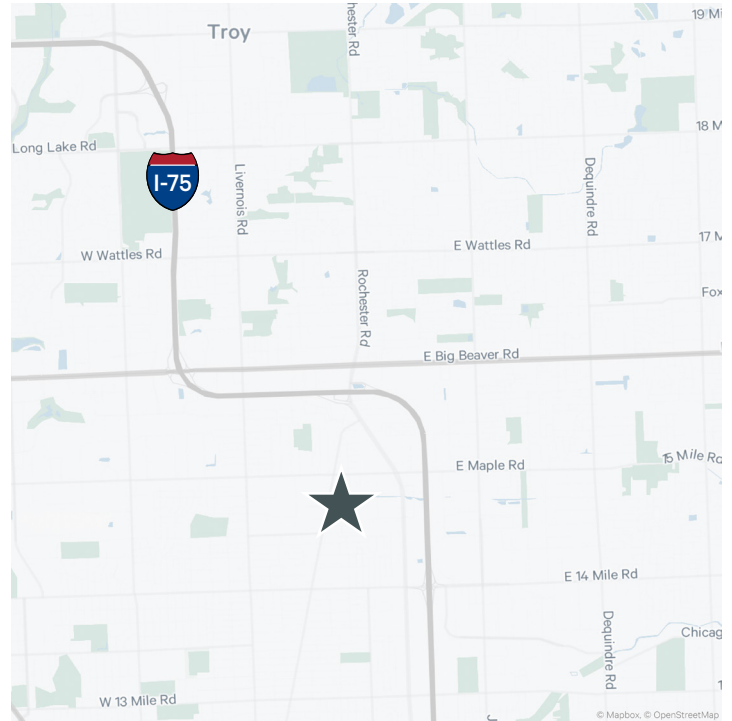
Building B

3.5 AC (\$4,000/AC/Mo)

Outdoor Storage

\$5,000,000

Sale Price



Total Available	28,908 (Two Buildings)	Grade Doors	Bldg. A: Three (3) Bldg. B: Ten (10)
Divisible	11,466 - 28,908 SF	Docks	None (Can Be Added)
Office Space	To Suit	Acreage	6.8 AC
Clear Height	+/-16'	Parking	Ample

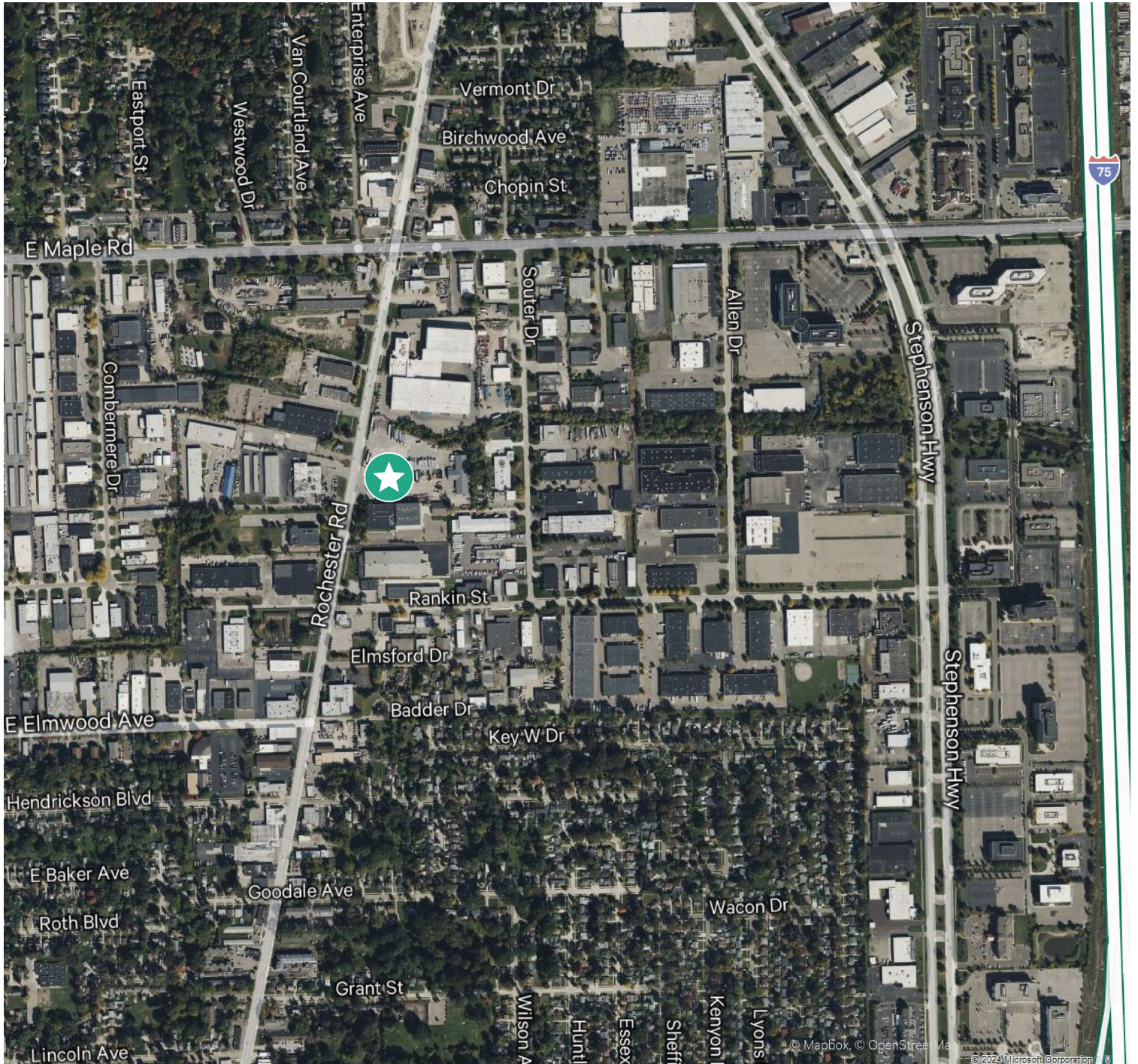
Comments

- + Available immediately
- + Large lot for truck parking/outdoor storage
- + Redevelopment possible
- + Proximity to I-75

- + Drive-through capability
- + Fully fenced & mostly paved
- + Ownership will consider flexible leasing scenarios
- + 3.5 acres of yard space

Aerial Map

For Sale or Lease





Contact Us

Lauren Scarpace

Executive Vice President
+1 248 351 2060
lauren.scarpace@cbre.com

Eugene J. Agnone III

Senior Vice President
+1 248 351 2024
eugene.agnone@cbre.com

Blake Burstein

Senior Associate
+1 248 936 6890
blake.burstein@cbre.com

© 2024 CBRE, Inc. All rights reserved. This information has been obtained from sources believed reliable, but has not been verified for accuracy or completeness. You should conduct a careful, independent investigation of the property and verify all information. Any reliance on this information is solely at your own risk. CBRE and the CBRE logo are service marks of CBRE, Inc. All other marks displayed on this document are the property of their respective owners, and the use of such logos does not imply any affiliation with or endorsement of CBRE. Photos herein are the property of their respective owners. Use of these images without the express written consent of the owner is prohibited.