

3,742 SF OFFICE-WAREHOUSE / FLEX SPACE

312-336 SOVEREIGN COURT | BALLWIN, MISSOURI 63011



3,742 SF OFFICE-WAREHOUSE / FLEX SPACE AVAILABLE

- 330 Sovereign Court, in Regency Park
- Excellent West County location just one block from the signalized intersection of Manchester and Weidman Roads
- Approximately 35% existing office finish
- Dock loading
- Ample, convenient parking
- **LEASE RATE: CALL BROKER FOR DETAILS**

For additional information, please contact:

TONY GIARRATANO
tony@hutkin.com
314.708.4922 o.
314.276.2352 m.

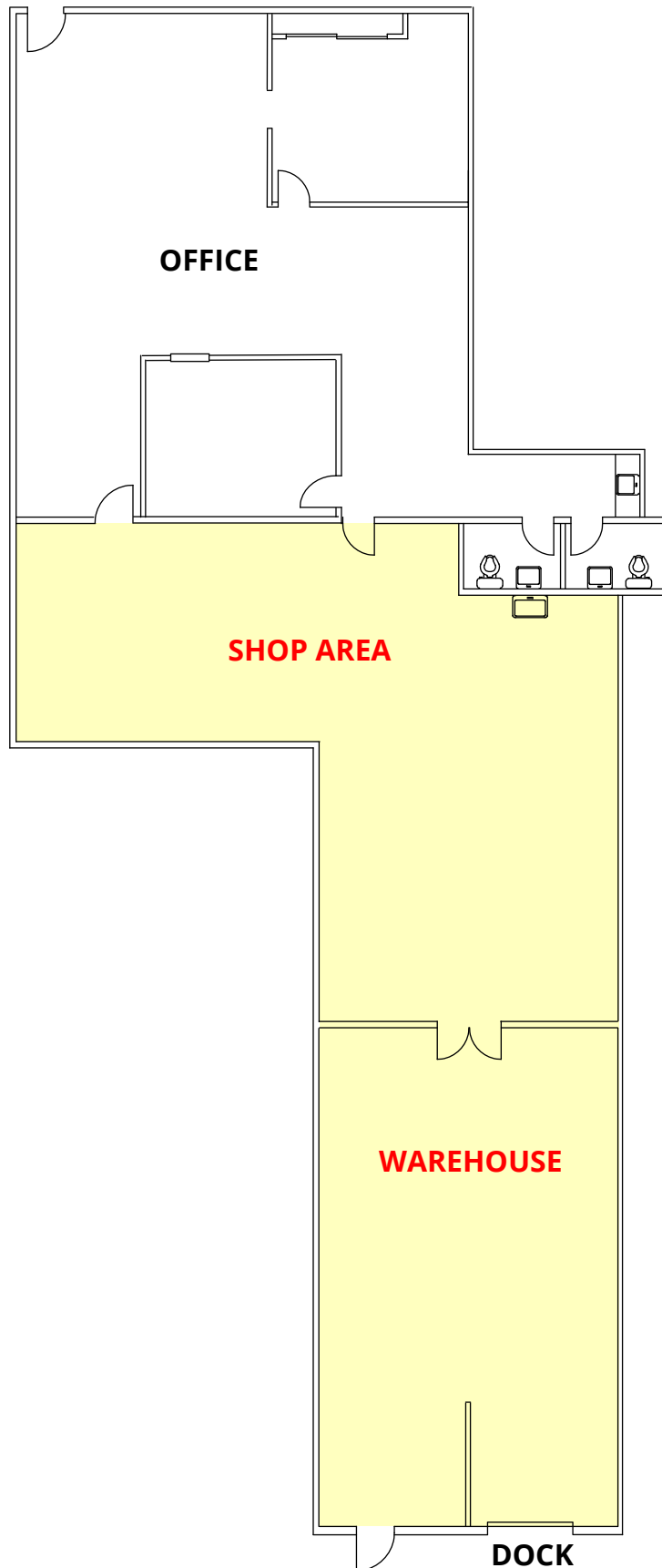
BO KEEFER
bkeef@hutkin.com
314.708.1258 o.
314.973.1242 m.

HUTKIN
DEVELOPMENT COMPANY

10829 OLIVE BOULEVARD, SUITE 200
ST. LOUIS, MISSOURI 63141
314.872.9140 PHONE
314.872.9001 FAX
WWW.HUTKIN.COM

3,742 SF OFFICE-WAREHOUSE / FLEX SPACE

312-336 SOVEREIGN COURT | BALLWIN, MISSOURI 63011



3,742 SF OFFICE-WAREHOUSE / FLEX SPACE

312-336 SOVEREIGN COURT | BALLWIN, MISSOURI 63011

