



# OFFICE CONDOMINIUM FOR LEASE

5585 Erindale Drive  
Colorado Springs, CO 80918

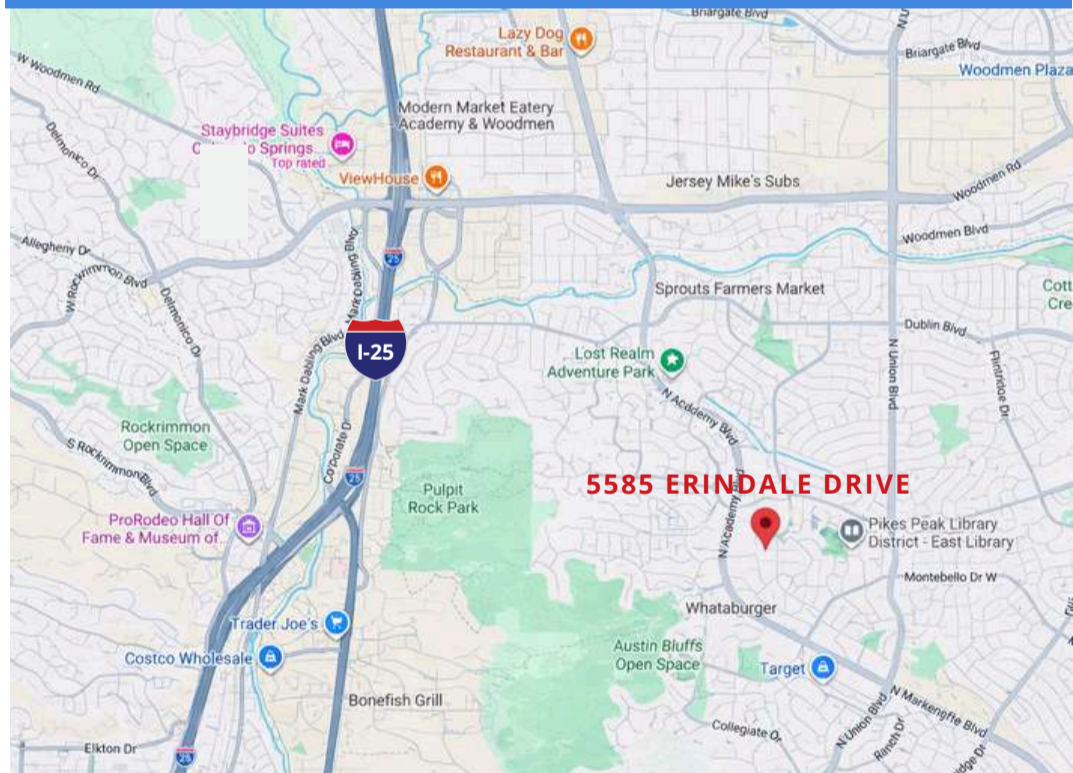
## PROPERTY SPECIFICATIONS

- LOCATION:** 5585 Erindale Drive  
Colorado Springs, CO 80918
- AVAILABLE:** Unit 205 & 206 +/- 1,782 SF
- LEASE RATE:** \$12 /SF + NNN
- ZONING:** MX-N CU

## ADDITIONAL INFORMATION:

- 3 Offices (One with fireplace), reception, open area, and bathroom
- Fiber internet available
- 75 surface parking spaces

## MAP



**JASON CASTRO**  
President



jason@peakcp.net  
719.759.9935



2727 N. Cascade Avenue,  
Suite 127, Colorado Springs, CO 80907

719.227.9987

www.peakcp.net

Peak Commercial Properties believes information contained herein, while not guaranteed, is from sources they believe reliable. Price, terms, and information are subject to change without notice.

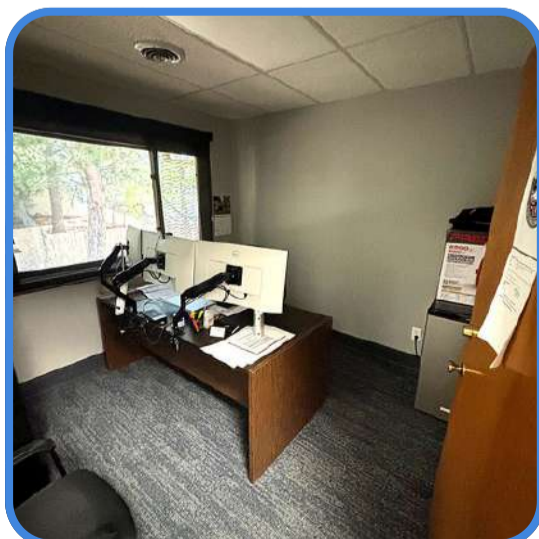
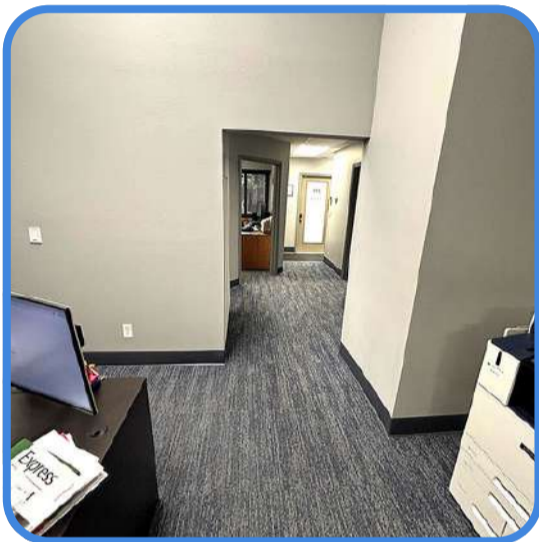
# FOR LEASE

5585 Erindale Drive  
Colorado Springs, CO 80918

## PHOTOS

UNIT 205 & 206

+/- 1,782 SF



The particulars, details and visuals shown herein are intended to give a general idea of the property. As such, they are not to be relied upon as statements of fact



2727 N. Cascade Avenue,  
Suite 127, Colorado Springs, CO 80907

719.227.9987

[www.peakcp.net](http://www.peakcp.net)

Peak Commercial Properties believes information contained herein, while not guaranteed, is from sources they believe reliable. Price, terms, and information are subject to change without notice.