

BUILDING 7 | 1740 MOUNTAIN AVENUE, NORCO, CA

Available
Now
±159,517
Square Feet

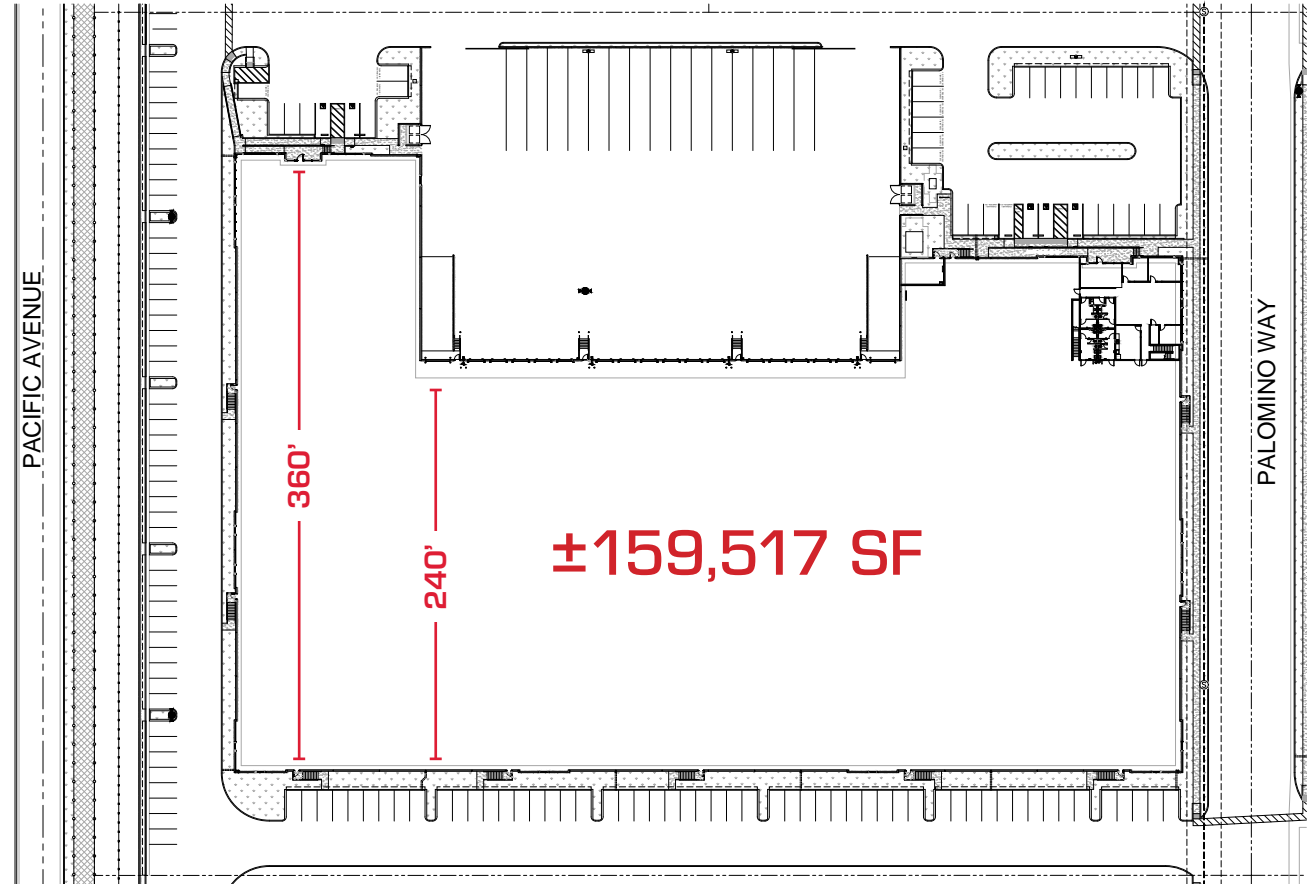


BUILDING 7 | 1740 MOUNTAIN AVENUE, NORCO, CA

BUILDING HIGHLIGHTS

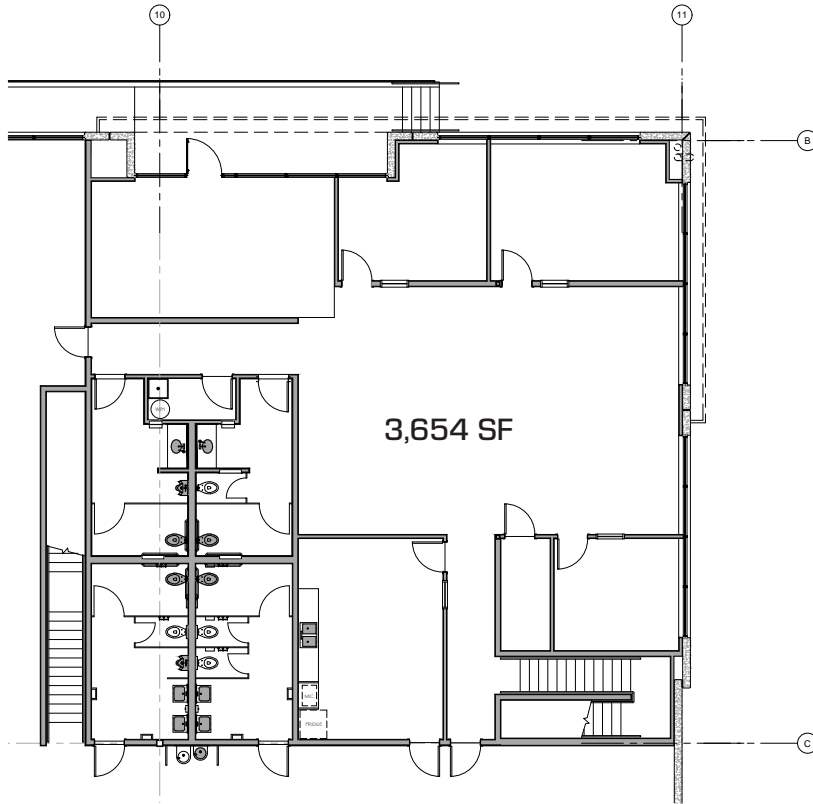
- ±7,252 SF OF TWO-STORY SPEC OFFICE
- 36' CLEAR HEIGHT
- ESFR SPRINKLERS (K-25 @ 40PSI)
- ±182' TRUCK COURT DEPTH
- 16 DOCK DOORS
- 2 GROUND LEVEL DOORS
- 143 PARKING SPACES
- 15 TRAILER PARKING STALLS
- 4,000 AMP PANEL (VERIFY)
- SECURED CONCRETE TRUCK COURT
- 7" REINFORCED CONCRETE SLAB THICKNESS
- 8 MECHANICAL PIT LEVELERS
- LED WAREHOUSE LIGHTING

SITE PLAN

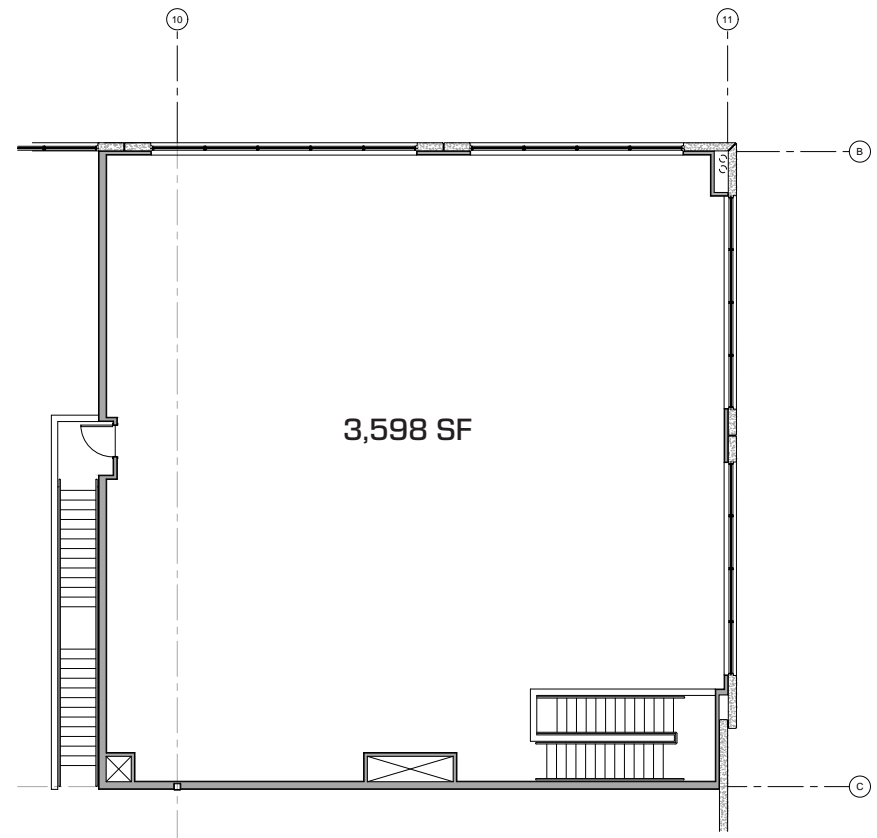


BUILDING 7 | 1740 MOUNTAIN AVENUE, NORCO, CA

1ST FLOOR SPEC OFFICE



2ND FLOOR SPEC OFFICE







PALOMINO RANCH
BUSINESS PARK
HORSETOWN USA - NORCO, CA



CAPROCK
PARTNERS



Building 7
±159,517 SF
AVAILABLE

Bldg 8

Bldg 9

Bldg 17

Bldg 18

Bldg 15

Bldg 16

Bldg 14

PHASE II

PHASE III

Mountain Ave
Second St



Jeff Ruscigno, SIOR
 Senior Vice President
 951.276.3600
 Lic#01030286
 jruscigno@leeriverside.com

Ryan Earnhart
 Senior Vice President/Principal
 909.373.2724
 Lic#01426559
 rearnhart@lee-assoc.com

Brian Pharris
 Senior Vice President/Principal
 909.373.2927
 Lic#01329363
 bpharris@lee-assoc.com

Austin Hill
 Senior Vice President/Principal
 909.373.2732
 Lic#01921364
 ahill@lee-assoc.com

Jeff Smith, SIOR
 Senior Vice President/Principal
 909.373.2909
 Lic#01030286
 jsmith@lee-assoc.com