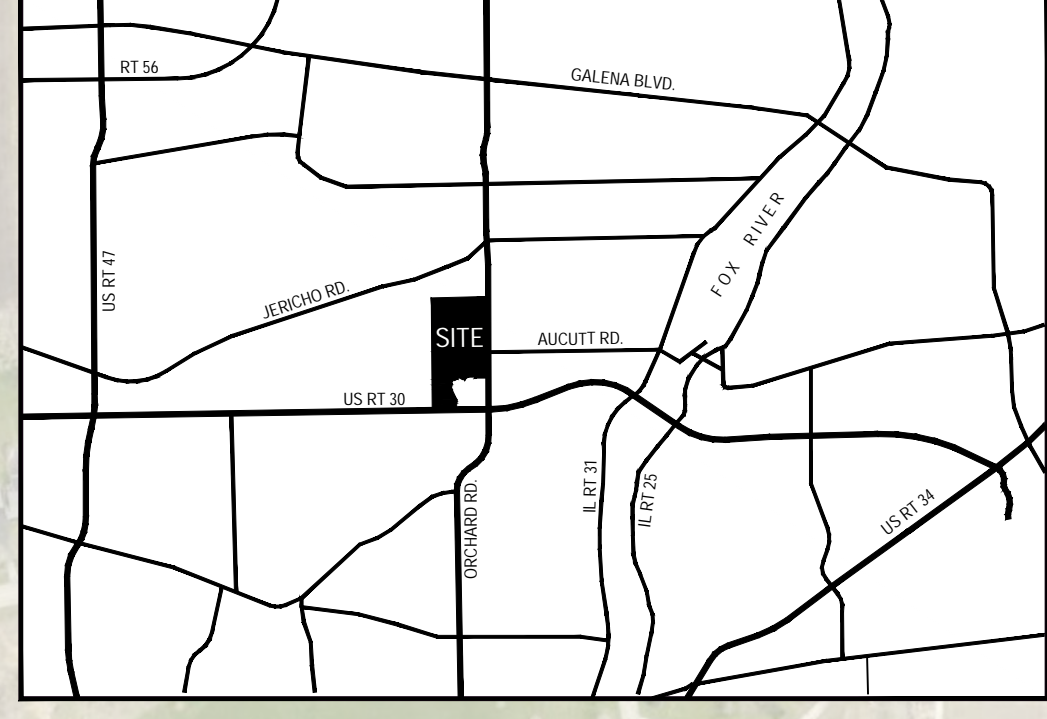


ORCHARD ROAD PROPERTY

Montgomery, Illinois

LOCATION MAP



SITE DATA

LAND USE	AREA
B-2 Regional Business District	67.1 Acres
M-1 Light Manufacturing District	92.9 Acres
M-2 General Manufacturing District	91.5 Acres
TOTAL	251.5 Acres
Open Space Corridor	54.6 Acres

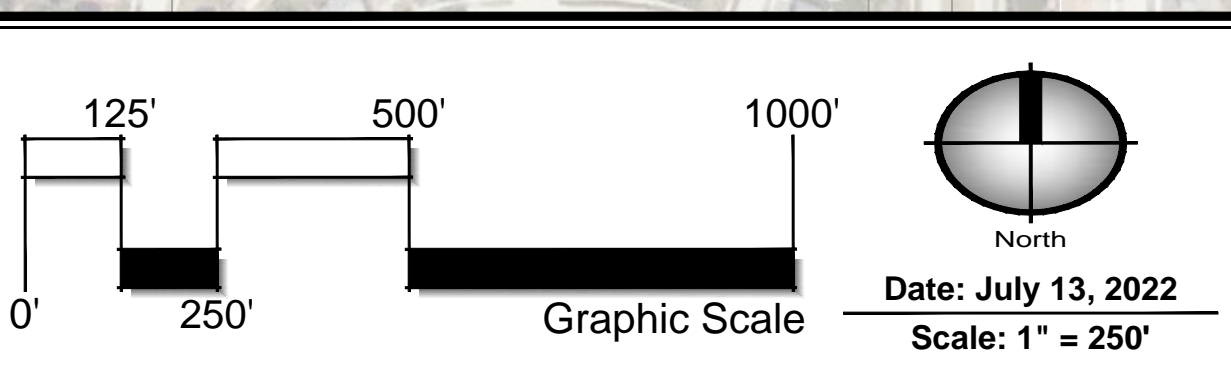
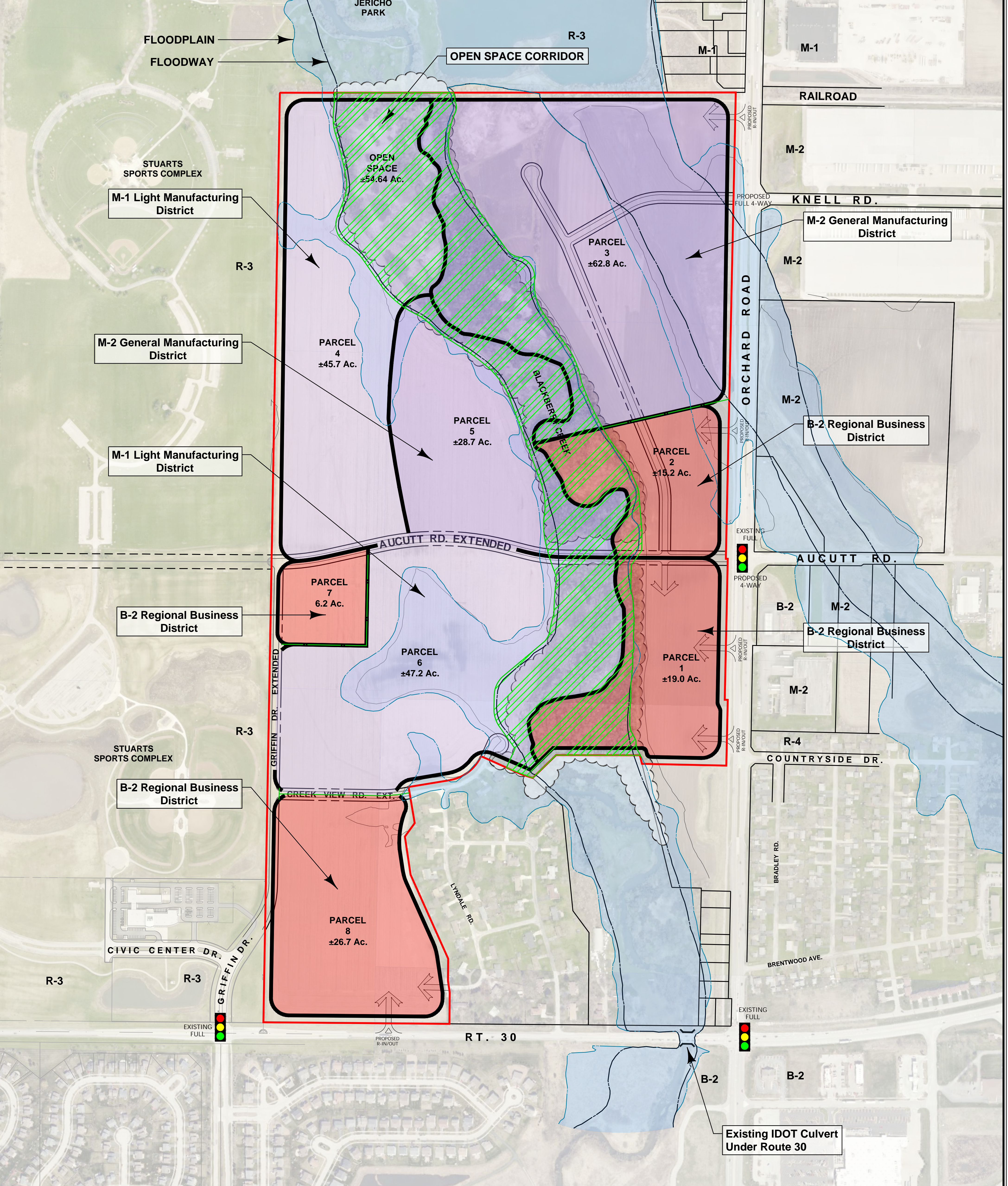


EXHIBIT C CONCEPTUAL LAND USE PLAN

Prepared For:
NGH FARMS, LLC
 6275 Route 71
 Oswego, IL 60543

Prepared By:

Schoppe Design Associates, Inc.
 LAND PLANNING & LANDSCAPE ARCHITECTURE
 126 S. Main Street
 Oswego, IL 60543
 p: 630 551-3355
 f: 630 551-3639
 schoppedesign.net

COPYRIGHT © Schoppe Design Associates, Inc. 2022

114.018_CDPT1