



## Oakdale Plaza

2425 Mulundy Way  
Lexington, Kentucky 40514

### Property Highlights

- Join the fast growing northside of Lexington!
- Two proposed new retail buildings with versatile floor plans as part of the Oakdale Development
- Building One: +/-10,182 SF
- Building Two: +/-7,305 SF
- Just off Citation Boulevard offering convenient access to New Circle Road, I-75/64, Georgetown and Leestown Roads
- Close proximity to the new Publix anchored Citation Pointe development (Opening Q1 2025)
- Surrounded by dense residential with population of +/-114,000 within 5 miles
- Rental Rate: \$25.00-\$30.00 PSF NNN

### Offering Summary

<b>Lease Rate:</b>	\$25.00 - 30.00 SF/yr (NNN)
<b>Available SF:</b>	1,200 - 10,182 SF

### For More Information



#### Zach Smith, CCIM

Senior Associate  
O: 859 224 2000  
zachsmith@naiisaac.com



#### Jordan Smith, MRED

Associate  
O: 859 224 2000  
jsmith@naiisaac.com



NO WARRANTY OR REPRESENTATION, EXPRESS OR IMPLIED, IS MADE AS TO THE ACCURACY OF THE INFORMATION CONTAINED HEREIN, AND THE SAME IS SUBMITTED SUBJECT TO ERRORS, OMISSIONS, CHANGE OF PRICE, RENTAL OR OTHER CONDITIONS, PRIOR SALE, LEASE OR FINANCING, OR WITHDRAWAL WITHOUT NOTICE, AND OF ANY SPECIAL LISTING CONDITIONS IMPOSED BY OUR PRINCIPALS NO WARRANTIES OR REPRESENTATIONS ARE MADE AS TO THE CONDITION OF THE PROPERTY OR ANY HAZARDS CONTAINED THEREIN ARE ANY TO BE IMPLIED.

771 Corporate Drive, Suite 500  
Lexington, KY 40503  
859 224 2000 tel  
[naiisaac.com](http://naiisaac.com)







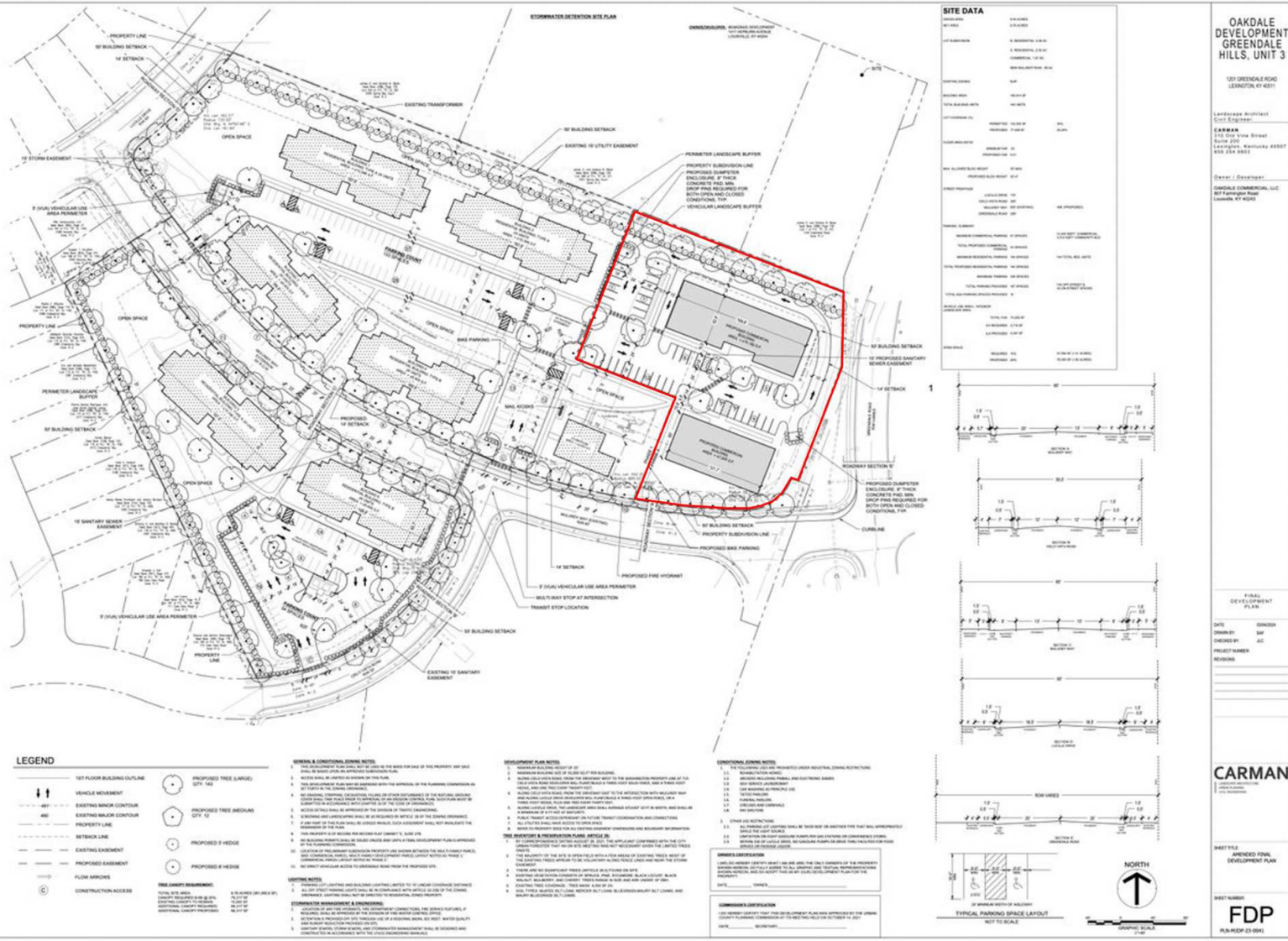
NO WARRANTY OR REPRESENTATION, EXPRESS OR IMPLIED, IS MADE AS TO THE ACCURACY OF THE INFORMATION CONTAINED HEREIN, AND THE SAME IS SUBMITTED SUBJECT TO ERRORS, OMISSIONS, CHANGE OF PRICE, RENTAL OR OTHER CONDITIONS, PRIOR SALE, LEASE OR FINANCING, OR WITHDRAWAL WITHOUT NOTICE, AND OF ANY SPECIAL LISTING CONDITIONS IMPOSED BY OUR PRINCIPALS NO WARRANTIES OR REPRESENTATIONS ARE MADE AS TO THE CONDITION OF THE PROPERTY OR ANY HAZARDS CONTAINED THEREIN ARE ANY TO BE IMPLIED.

771 Corporate Drive, Suite 500  
Lexington, KY 40503  
859 224 2000 tel  
[naiisaac.com](http://naiisaac.com)



NO WARRANTY OR REPRESENTATION, EXPRESS OR IMPLIED, IS MADE AS TO THE ACCURACY OF THE INFORMATION CONTAINED HEREIN, AND THE SAME IS SUBMITTED SUBJECT TO ERRORS, OMISSIONS, CHANGE OF PRICE, RENTAL OR OTHER CONDITIONS, PRIOR SALE, LEASE OR FINANCING, OR WITHDRAWAL WITHOUT NOTICE, AND OF ANY SPECIAL LISTING CONDITIONS IMPOSED BY OUR PRINCIPALS NO WARRANTIES OR REPRESENTATIONS ARE MADE AS TO THE CONDITION OF THE PROPERTY OR ANY HAZARDS CONTAINED THEREIN ARE ANY TO BE IMPLIED.

771 Corporate Drive, Suite 500  
Lexington, KY 40503  
859 224 2000 tel  
[naiisaac.com](http://naiisaac.com)



**LEGEND**

	1ST FLOOR BUILDING OUTLINE
	VEHICLE MOVEMENT
	EXISTING MINOR CONTOUR
	PROJECT LINE
	EXISTING EASEMENT
	PROPOSED EASEMENT
	FLOW ARROWS
	CONSTRUCTION ACCESS

**SYMBOLS & CONDITIONAL SYMBOLS**

	PROPOSED TREE (LARGE) DTP 100
	PROPOSED TREE (MEDIUM) DTP 50
	PROPOSED HEDGE
	PROPOSED HEDGE

**DEVELOPMENT PLAN NOTES**

1. THE DEVELOPMENT PLAN SHALL BE SUBJECT TO THE REVIEW OF THE PLANNING COMMISSION AND THE BOARD OF ZONING AND PLANNING.
2. THE DEVELOPMENT PLAN SHALL BE SUBJECT TO THE REVIEW OF THE PLANNING COMMISSION AND THE BOARD OF ZONING AND PLANNING.
3. THE DEVELOPMENT PLAN SHALL BE SUBJECT TO THE REVIEW OF THE PLANNING COMMISSION AND THE BOARD OF ZONING AND PLANNING.
4. THE DEVELOPMENT PLAN SHALL BE SUBJECT TO THE REVIEW OF THE PLANNING COMMISSION AND THE BOARD OF ZONING AND PLANNING.
5. THE DEVELOPMENT PLAN SHALL BE SUBJECT TO THE REVIEW OF THE PLANNING COMMISSION AND THE BOARD OF ZONING AND PLANNING.
6. THE DEVELOPMENT PLAN SHALL BE SUBJECT TO THE REVIEW OF THE PLANNING COMMISSION AND THE BOARD OF ZONING AND PLANNING.
7. THE DEVELOPMENT PLAN SHALL BE SUBJECT TO THE REVIEW OF THE PLANNING COMMISSION AND THE BOARD OF ZONING AND PLANNING.
8. THE DEVELOPMENT PLAN SHALL BE SUBJECT TO THE REVIEW OF THE PLANNING COMMISSION AND THE BOARD OF ZONING AND PLANNING.
9. THE DEVELOPMENT PLAN SHALL BE SUBJECT TO THE REVIEW OF THE PLANNING COMMISSION AND THE BOARD OF ZONING AND PLANNING.
10. THE DEVELOPMENT PLAN SHALL BE SUBJECT TO THE REVIEW OF THE PLANNING COMMISSION AND THE BOARD OF ZONING AND PLANNING.

**CONDITIONAL SYMBOLS**

1. THE DEVELOPMENT PLAN SHALL BE SUBJECT TO THE REVIEW OF THE PLANNING COMMISSION AND THE BOARD OF ZONING AND PLANNING.
2. THE DEVELOPMENT PLAN SHALL BE SUBJECT TO THE REVIEW OF THE PLANNING COMMISSION AND THE BOARD OF ZONING AND PLANNING.
3. THE DEVELOPMENT PLAN SHALL BE SUBJECT TO THE REVIEW OF THE PLANNING COMMISSION AND THE BOARD OF ZONING AND PLANNING.
4. THE DEVELOPMENT PLAN SHALL BE SUBJECT TO THE REVIEW OF THE PLANNING COMMISSION AND THE BOARD OF ZONING AND PLANNING.
5. THE DEVELOPMENT PLAN SHALL BE SUBJECT TO THE REVIEW OF THE PLANNING COMMISSION AND THE BOARD OF ZONING AND PLANNING.
6. THE DEVELOPMENT PLAN SHALL BE SUBJECT TO THE REVIEW OF THE PLANNING COMMISSION AND THE BOARD OF ZONING AND PLANNING.
7. THE DEVELOPMENT PLAN SHALL BE SUBJECT TO THE REVIEW OF THE PLANNING COMMISSION AND THE BOARD OF ZONING AND PLANNING.
8. THE DEVELOPMENT PLAN SHALL BE SUBJECT TO THE REVIEW OF THE PLANNING COMMISSION AND THE BOARD OF ZONING AND PLANNING.
9. THE DEVELOPMENT PLAN SHALL BE SUBJECT TO THE REVIEW OF THE PLANNING COMMISSION AND THE BOARD OF ZONING AND PLANNING.
10. THE DEVELOPMENT PLAN SHALL BE SUBJECT TO THE REVIEW OF THE PLANNING COMMISSION AND THE BOARD OF ZONING AND PLANNING.

**SITE DATA**

PROJECT NAME	OAKDALE DEVELOPMENT GREENDALE HILLS, UNIT 3
OWNER	101 GREENDALE ROAD LEXINGTON, KY 40511
DESIGNER	CARMAN
DATE	10/1/2011
SCALE	AS SHOWN
PROJECT NUMBER	101-001
REVISIONS	

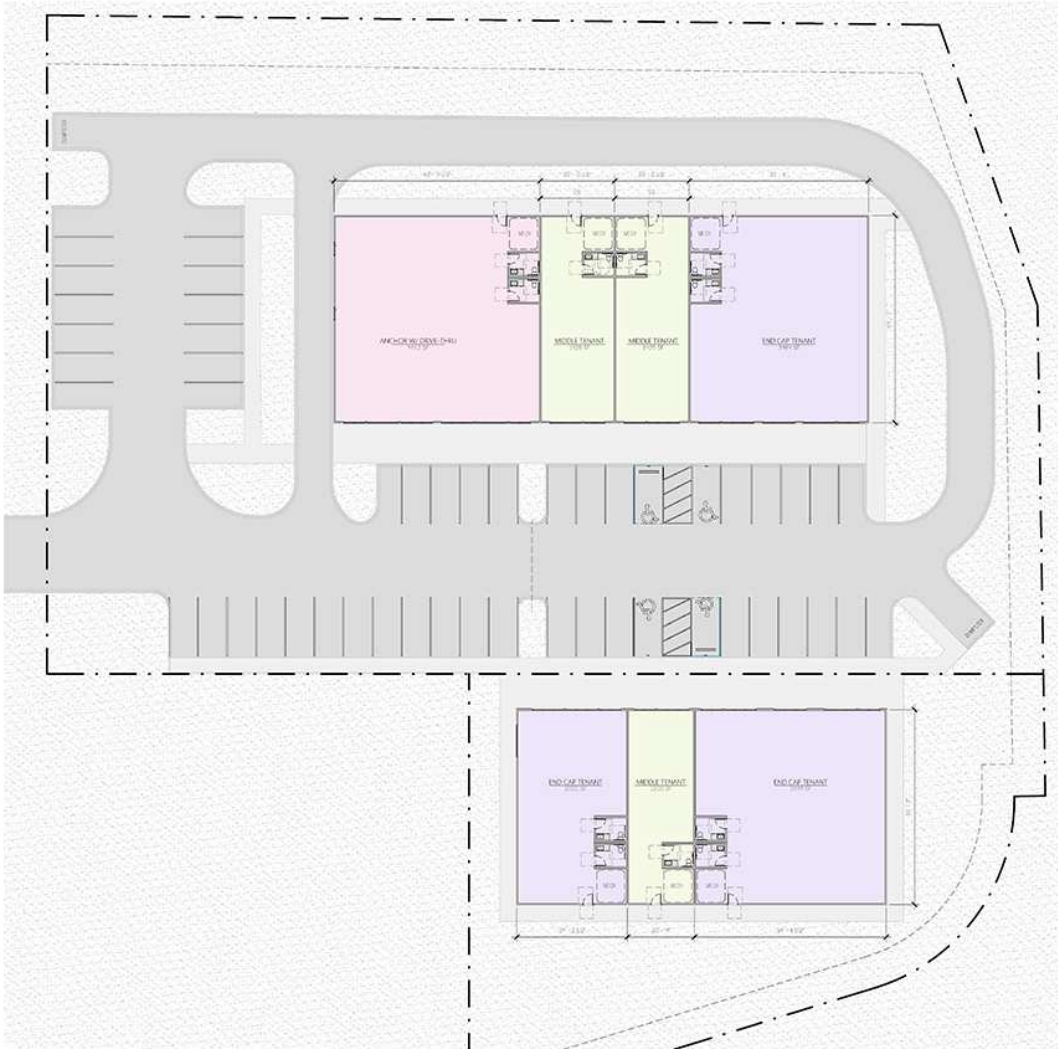
**FINAL DEVELOPMENT PLAN**

**CARMAN**  
Lexington, KY 40511

**FDP**  
PLAN NO. DP-01

NO WARRANTY OR REPRESENTATION, EXPRESS OR IMPLIED, IS MADE AS TO THE ACCURACY OF THE INFORMATION CONTAINED HEREIN, AND THE SAME IS SUBMITTED SUBJECT TO ERRORS, OMISSIONS, CHANGE OF PRICE, RENTAL OR OTHER CONDITIONS, PRIOR SALE, LEASE OR FINANCING, OR WITHDRAWAL WITHOUT NOTICE, AND OF ANY SPECIAL LISTING CONDITIONS IMPOSED BY OUR PRINCIPALS NO WARRANTIES OR REPRESENTATIONS ARE MADE AS TO THE CONDITION OF THE PROPERTY OR ANY HAZARDS CONTAINED THEREIN ARE ANY TO BE IMPLIED.

771 Corporate Drive, Suite 500  
Lexington, KY 40503  
859 224 2000 tel  
[naiisaac.com](http://naiisaac.com)



**GENERAL FLOOR PLAN NOTES**

- 1. REFER TO GENERAL PROJECT NOTES SHEETS FOR COMPREHENSIVE DETAILS OF GENERAL NOTES AND CONVENTIONS.
- 2. REFER TO THE GENERAL FLOOR PLAN AND SECTION FOR ALL DIMENSIONS AND LOCATIONS OF ALL ELEMENTS OF THE PROJECT. ALL DIMENSIONS ARE TO FACE UNLESS OTHERWISE NOTED.
- 3. REFER TO THE GENERAL FLOOR PLAN AND SECTION FOR ALL DIMENSIONS AND LOCATIONS OF ALL ELEMENTS OF THE PROJECT. ALL DIMENSIONS ARE TO FACE UNLESS OTHERWISE NOTED.
- 4. REFER TO THE GENERAL FLOOR PLAN AND SECTION FOR ALL DIMENSIONS AND LOCATIONS OF ALL ELEMENTS OF THE PROJECT. ALL DIMENSIONS ARE TO FACE UNLESS OTHERWISE NOTED.
- 5. REFER TO THE GENERAL FLOOR PLAN AND SECTION FOR ALL DIMENSIONS AND LOCATIONS OF ALL ELEMENTS OF THE PROJECT. ALL DIMENSIONS ARE TO FACE UNLESS OTHERWISE NOTED.
- 6. REFER TO THE GENERAL FLOOR PLAN AND SECTION FOR ALL DIMENSIONS AND LOCATIONS OF ALL ELEMENTS OF THE PROJECT. ALL DIMENSIONS ARE TO FACE UNLESS OTHERWISE NOTED.
- 7. REFER TO THE GENERAL FLOOR PLAN AND SECTION FOR ALL DIMENSIONS AND LOCATIONS OF ALL ELEMENTS OF THE PROJECT. ALL DIMENSIONS ARE TO FACE UNLESS OTHERWISE NOTED.
- 8. REFER TO THE GENERAL FLOOR PLAN AND SECTION FOR ALL DIMENSIONS AND LOCATIONS OF ALL ELEMENTS OF THE PROJECT. ALL DIMENSIONS ARE TO FACE UNLESS OTHERWISE NOTED.
- 9. REFER TO THE GENERAL FLOOR PLAN AND SECTION FOR ALL DIMENSIONS AND LOCATIONS OF ALL ELEMENTS OF THE PROJECT. ALL DIMENSIONS ARE TO FACE UNLESS OTHERWISE NOTED.
- 10. REFER TO THE GENERAL FLOOR PLAN AND SECTION FOR ALL DIMENSIONS AND LOCATIONS OF ALL ELEMENTS OF THE PROJECT. ALL DIMENSIONS ARE TO FACE UNLESS OTHERWISE NOTED.

**SUPPLEMENTAL REFERENCE DIRECTORY**

- 1. REFER TO THE GENERAL PROJECT NOTES SHEETS FOR COMPREHENSIVE DETAILS OF GENERAL NOTES AND CONVENTIONS.
- 2. REFER TO THE GENERAL FLOOR PLAN AND SECTION FOR ALL DIMENSIONS AND LOCATIONS OF ALL ELEMENTS OF THE PROJECT. ALL DIMENSIONS ARE TO FACE UNLESS OTHERWISE NOTED.
- 3. REFER TO THE GENERAL FLOOR PLAN AND SECTION FOR ALL DIMENSIONS AND LOCATIONS OF ALL ELEMENTS OF THE PROJECT. ALL DIMENSIONS ARE TO FACE UNLESS OTHERWISE NOTED.
- 4. REFER TO THE GENERAL FLOOR PLAN AND SECTION FOR ALL DIMENSIONS AND LOCATIONS OF ALL ELEMENTS OF THE PROJECT. ALL DIMENSIONS ARE TO FACE UNLESS OTHERWISE NOTED.
- 5. REFER TO THE GENERAL FLOOR PLAN AND SECTION FOR ALL DIMENSIONS AND LOCATIONS OF ALL ELEMENTS OF THE PROJECT. ALL DIMENSIONS ARE TO FACE UNLESS OTHERWISE NOTED.
- 6. REFER TO THE GENERAL FLOOR PLAN AND SECTION FOR ALL DIMENSIONS AND LOCATIONS OF ALL ELEMENTS OF THE PROJECT. ALL DIMENSIONS ARE TO FACE UNLESS OTHERWISE NOTED.
- 7. REFER TO THE GENERAL FLOOR PLAN AND SECTION FOR ALL DIMENSIONS AND LOCATIONS OF ALL ELEMENTS OF THE PROJECT. ALL DIMENSIONS ARE TO FACE UNLESS OTHERWISE NOTED.
- 8. REFER TO THE GENERAL FLOOR PLAN AND SECTION FOR ALL DIMENSIONS AND LOCATIONS OF ALL ELEMENTS OF THE PROJECT. ALL DIMENSIONS ARE TO FACE UNLESS OTHERWISE NOTED.
- 9. REFER TO THE GENERAL FLOOR PLAN AND SECTION FOR ALL DIMENSIONS AND LOCATIONS OF ALL ELEMENTS OF THE PROJECT. ALL DIMENSIONS ARE TO FACE UNLESS OTHERWISE NOTED.
- 10. REFER TO THE GENERAL FLOOR PLAN AND SECTION FOR ALL DIMENSIONS AND LOCATIONS OF ALL ELEMENTS OF THE PROJECT. ALL DIMENSIONS ARE TO FACE UNLESS OTHERWISE NOTED.

**TENANT TYPE LEGEND**

- ANCHOR W/ DRIVE-THRU
- END CAP TENANT
- MIDDLE TENANT

**PLAN LEGEND**

- NEW WORK
- EXISTING
- REMOVE
- AS-BUILT
- AS-CONSTRUCTED
- AS-RECONSTRUCTED
- AS-RENOVATED
- AS-REPAIRED
- AS-REPLACED
- AS-REMOVED
- AS-REMOVED AND REPLACED
- AS-REMOVED AND RECONSTRUCTED
- AS-REMOVED AND RENOVATED
- AS-REMOVED AND REPAIRED
- AS-REMOVED AND REPLACED AND RECONSTRUCTED
- AS-REMOVED AND RENOVATED AND REPAIRED
- AS-REMOVED AND RECONSTRUCTED AND RENOVATED
- AS-REMOVED AND RECONSTRUCTED AND REPAIRED
- AS-REMOVED AND RENOVATED AND RECONSTRUCTED
- AS-REMOVED AND RENOVATED AND REPAIRED
- AS-REMOVED AND RECONSTRUCTED AND RENOVATED AND REPAIRED

**WORK**  
ARCHITECTURE + DESIGN  
Lexington, KY 40503  
859.224.2000  
www.workarchitect.com

DEVELOPMENT

FIRST FLOOR PLAN  
ADDRESS  
CITY, STATE #####

01.15.2025

LOG PROJECT PHASE REVISION DATE

8600501

A211

NEW CONSTRUCTION  
**BGD2501** LEXINGTON, KENTUCKY

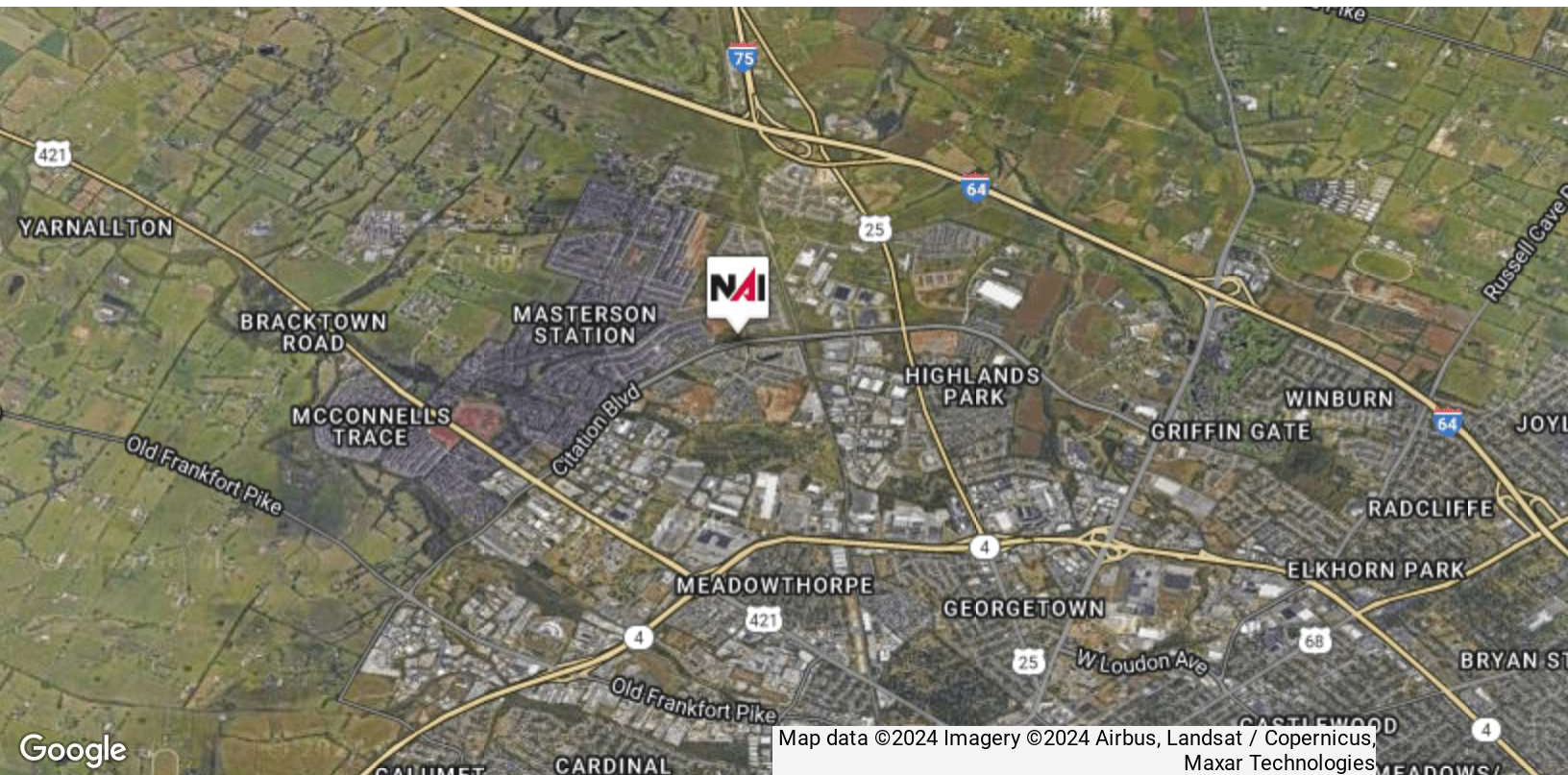
NO WARRANTY OR REPRESENTATION, EXPRESS OR IMPLIED, IS MADE AS TO THE ACCURACY OF THE INFORMATION CONTAINED HEREIN, AND THE SAME IS SUBMITTED SUBJECT TO ERRORS, OMISSIONS, CHANGE OF PRICE, RENTAL OR OTHER CONDITIONS, PRIOR SALE, LEASE OR FINANCING, OR WITHDRAWAL WITHOUT NOTICE, AND OF ANY SPECIAL LISTING CONDITIONS IMPOSED BY OUR PRINCIPALS NO WARRANTIES OR REPRESENTATIONS ARE MADE AS TO THE CONDITION OF THE PROPERTY OR ANY HAZARDS CONTAINED THEREIN ARE ANY TO BE IMPLIED.



Map data ©2024 Google Imagery ©2024 Airbus, Landsat / Copernicus, Maxar Technologies

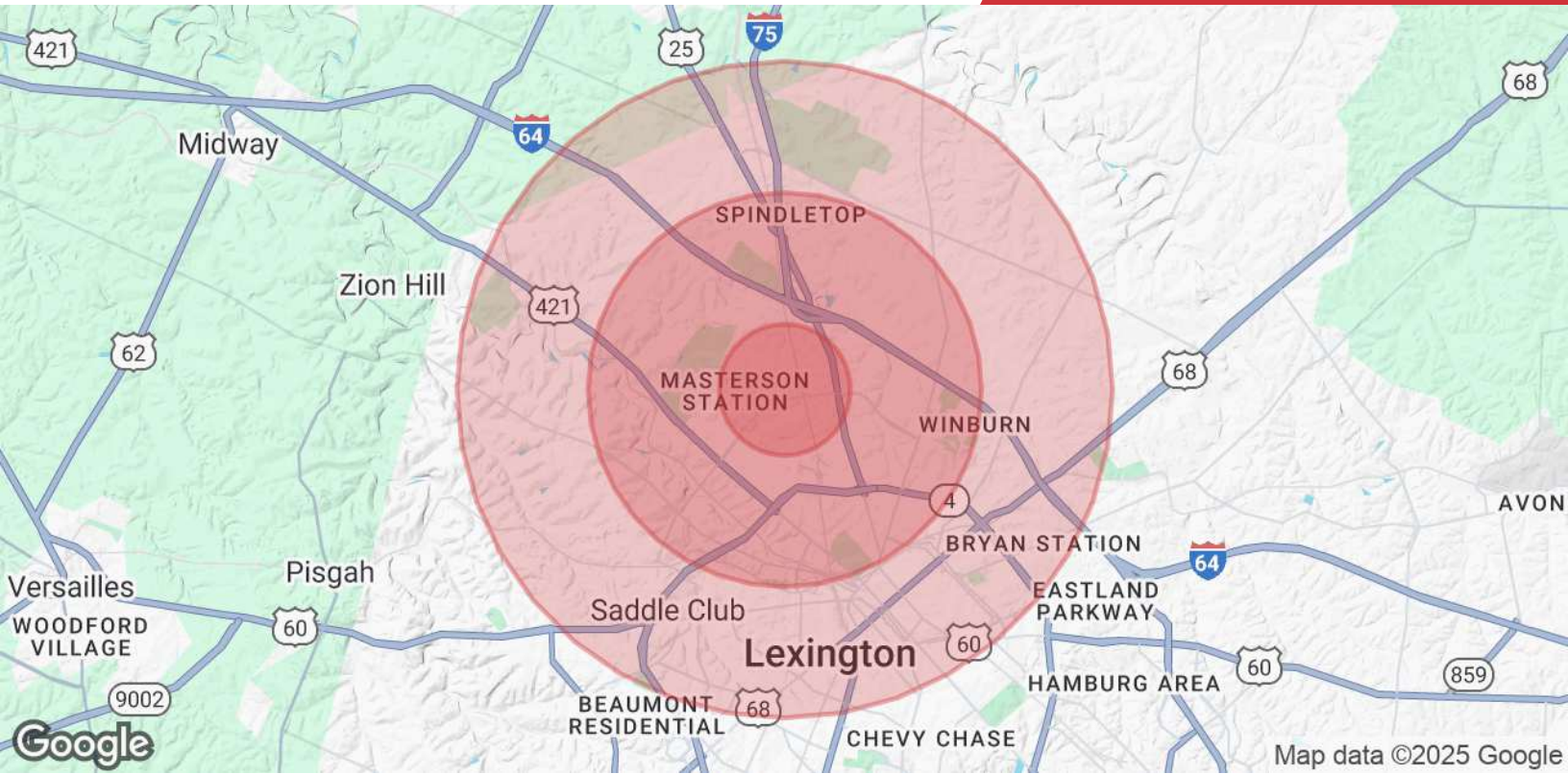
NO WARRANTY OR REPRESENTATION, EXPRESS OR IMPLIED, IS MADE AS TO THE ACCURACY OF THE INFORMATION CONTAINED HEREIN, AND THE SAME IS SUBMITTED SUBJECT TO ERRORS, OMISSIONS, CHANGE OF PRICE, RENTAL OR OTHER CONDITIONS, PRIOR SALE, LEASE OR FINANCING, OR WITHDRAWAL WITHOUT NOTICE, AND OF ANY SPECIAL LISTING CONDITIONS IMPOSED BY OUR PRINCIPALS NO WARRANTIES OR REPRESENTATIONS ARE MADE AS TO THE CONDITION OF THE PROPERTY OR ANY HAZARDS CONTAINED THEREIN ARE ANY TO BE IMPLIED.

771 Corporate Drive, Suite 500  
Lexington, KY 40503  
859 224 2000 tel  
[naiisaac.com](http://naiisaac.com)



NO WARRANTY OR REPRESENTATION, EXPRESS OR IMPLIED, IS MADE AS TO THE ACCURACY OF THE INFORMATION CONTAINED HEREIN, AND THE SAME IS SUBMITTED SUBJECT TO ERRORS, OMISSIONS, CHANGE OF PRICE, RENTAL OR OTHER CONDITIONS, PRIOR SALE, LEASE OR FINANCING, OR WITHDRAWAL WITHOUT NOTICE, AND OF ANY SPECIAL LISTING CONDITIONS IMPOSED BY OUR PRINCIPALS NO WARRANTIES OR REPRESENTATIONS ARE MADE AS TO THE CONDITION OF THE PROPERTY OR ANY HAZARDS CONTAINED THEREIN ARE ANY TO BE IMPLIED.

771 Corporate Drive, Suite 500  
Lexington, KY 40503  
859 224 2000 tel  
[naiisaac.com](http://naiisaac.com)



	1 Mile	3 Miles	5 Miles
<b>Population</b>			
Total Population	10,800	37,530	114,571
Average Age	35	37	37
Average Age (Male)	35	36	36
Average Age (Female)	36	38	37
<b>Households &amp; Income</b>			
Total Households	4,156	14,200	46,171
# of Persons per HH	2.6	2.6	2.5
Average HH Income	\$108,211	\$90,951	\$75,993
Average House Value	\$288,767	\$282,770	\$319,538

Demographics data derived from 2024 STDB