



# HAGGERTY INNOVATION CENTER

27200-27300  
HAGGERTY ROAD  
FARMINGTON HILLS, MI  
**FOR LEASE**

CONTACTS:

**EDWARD WUJEK**

Vice Chairman

+1 248 351 2058

[edward.wujek@cbre.com](mailto:edward.wujek@cbre.com)

**PHIL SPRAGUE**

Vice President

+1 248 351 2032

[philip.sprague@cbre.com](mailto:philip.sprague@cbre.com)

**KELLY CUBBIN**

Vice President

+1 248 936 6852

[kelly.cubbin@cbre.com](mailto:kelly.cubbin@cbre.com)

**CBRE**

**AVISTONE**  
Investing Where Industry Works

# OVERVIEW



Six building high technology “flex” park totaling 224,000 square feet setting upon 20 acres at Haggerty and Twelve Mile Roads



Ideal location with immediate access to the M-5 Connector at the Twelve Mile Interchange, spilling into I-96, I-696 and I-275



Tenants include Sirius XM Radio, Quest Diagnostics, VI Engineering, among others



IRO (Industrial Research Office) zoning allows for a variety of uses



Shop/warehouse areas have 15' clear to the joist



All vacant suites have grade level door access to shop/warehouse areas



Space to suit with ability to add or decrease office square footage



Onsite property manager

# AVAILABILITY

SUITE #	OFFICE AREA	WAREHOUSE AREA	TOTAL SF
A2	2,187 SF	890 SF	3,077 SF
A7	1,879 SF	495 SF	2,374 SF
A21	1,358 SF	249 SF	1,607 SF
B12+B13	5,320 SF	2,953 SF	8,273 SF
C7	4,204 SF	746 SF	4,950 SF
C17	1,569 SF	820 SF	2,389 SF
C20	2,477 SF	2,742 SF	5,219 SF
D5	1,408 SF	902 SF	2,310 SF
E1	6,301 SF	539 SF*	6,840 SF
E15	2,189 SF	NA	2,189 SF
E1 + E15	8,490 SF	539 SF*	9,029 SF
F26	2,583 SF	407 SF	2,990 SF
F28	1,094 SF	386 SF	1,480 SF
F26 + F28	3,677 SF	798 SF	4,475 SF

\*WAREHOUSE CAN BE EXPANDED TO SUIT

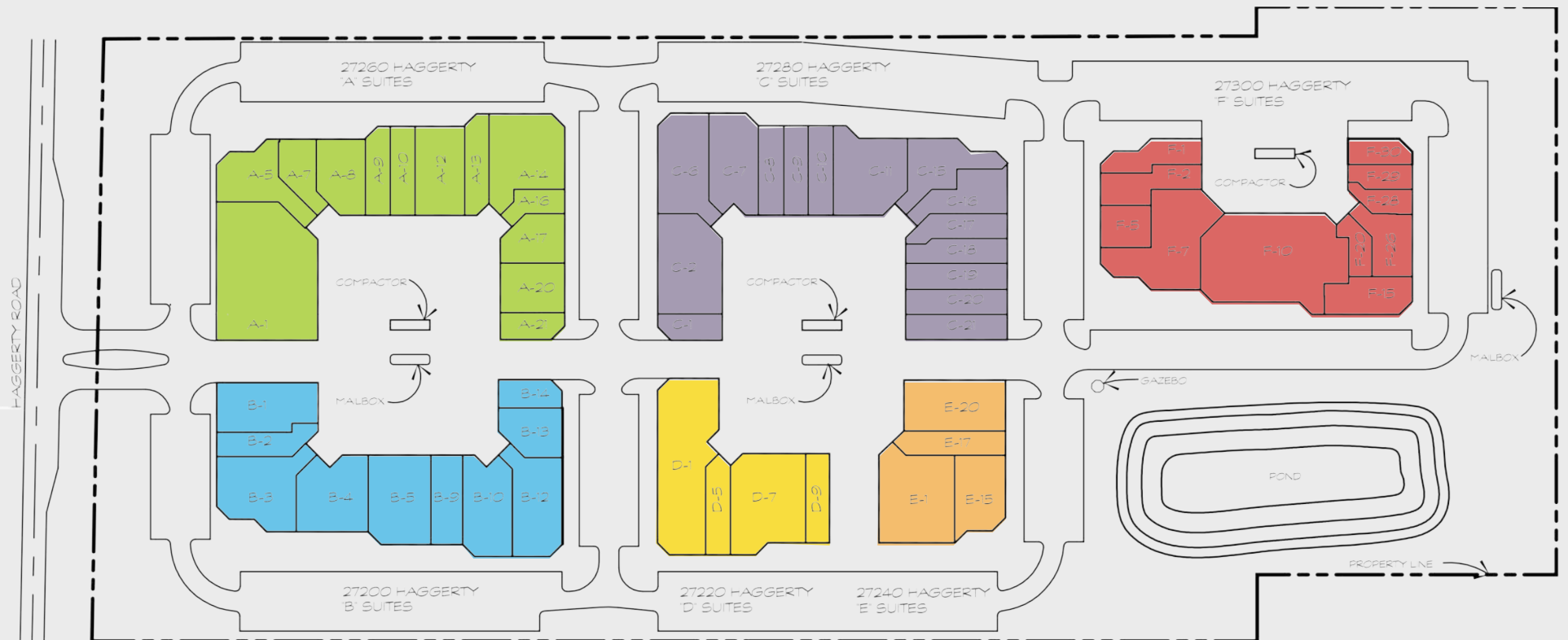


AVAILABLE SUITES:  
FROM 1,480 SF  
TO 9,029 SF



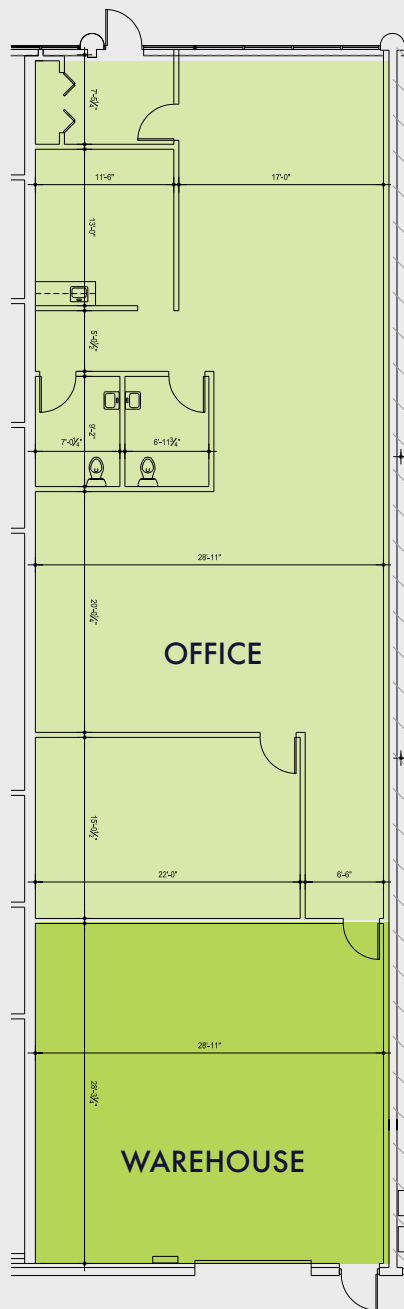


# SITE PLAN



# FLOOR PLAN

CURRENT FLOOR PLAN



PROPOSED EXPANDED WAREHOUSE PLAN



SUITE NUMBER

# A2

TOTAL SF

# 3,077 SF

WAREHOUSE SF: 890 SF (Current)  
1,977 SF (Proposed)

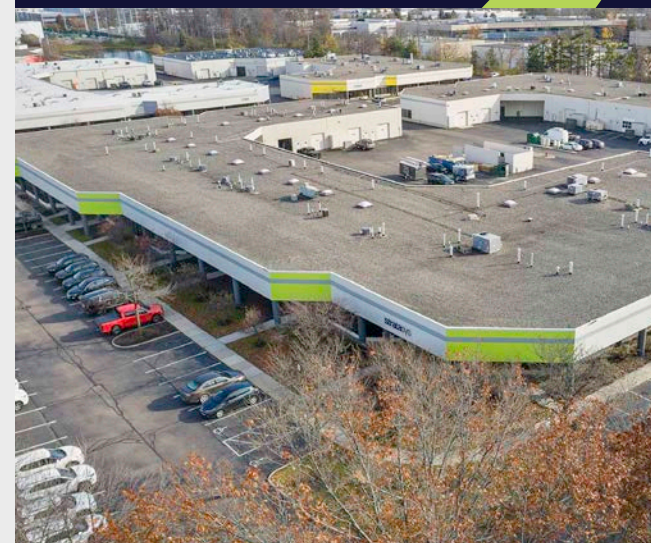
OFFICE SF: 2,187 SF (Current)  
1,100 SF (Proposed)

GRADE LEVELS: 1  
DOOR(S): 1

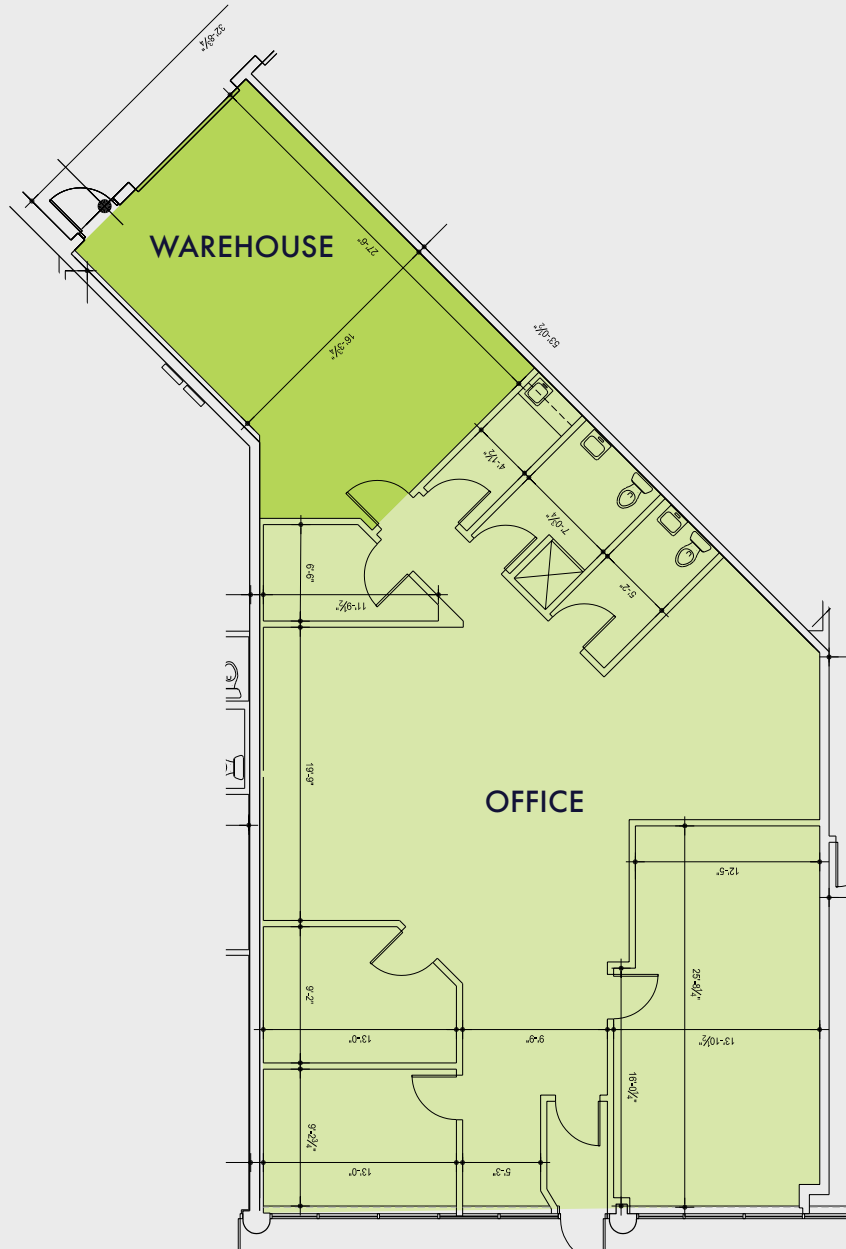
DATE AVAILABLE: IMMEDIATE

LEASE RATE: Contact Broker

COMMENTS: Warehouse can be expanded - As Shown



# FLOOR PLAN



SUITE NUMBER

# A7

TOTAL SF

# 2,374 SF

WAREHOUSE SF: 495 SF

OFFICE SF: 1,879 SF

GRADE LEVELS: 1  
DOOR(S): 1

DATE AVAILABLE: IMMEDIATE

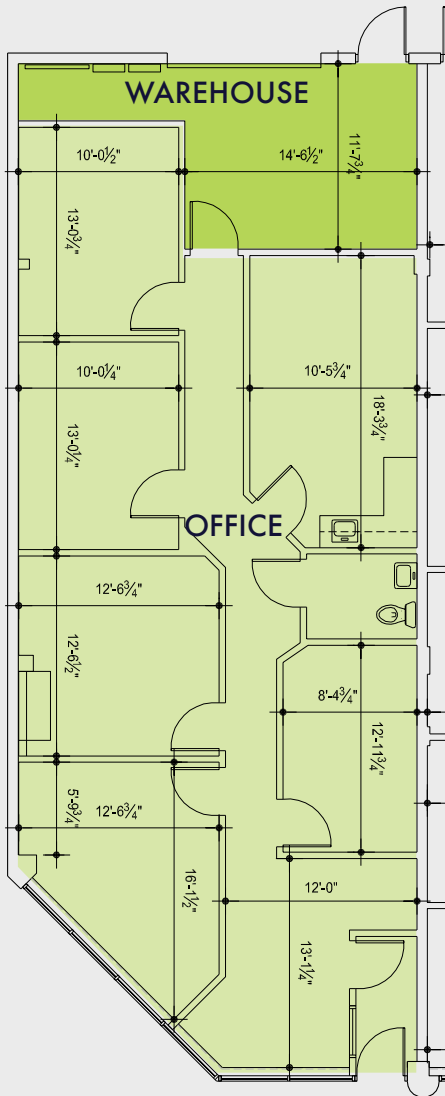
LEASE RATE: Contact Broker

COMMENTS: Warehouse can be expanded

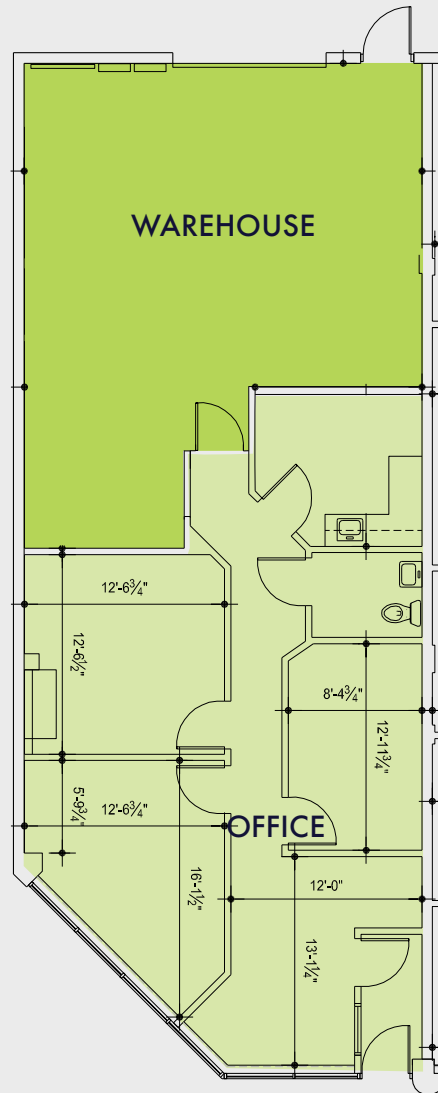


# FLOOR PLAN

CURRENT FLOOR PLAN



PROPOSED EXPANDED WAREHOUSE PLAN



SUITE NUMBER

## A21

TOTAL SF

# 1,607 SF

WAREHOUSE SF: 249 SF

OFFICE SF: 1,358 SF

GRADE LEVELS: 1  
DOOR(S): 1

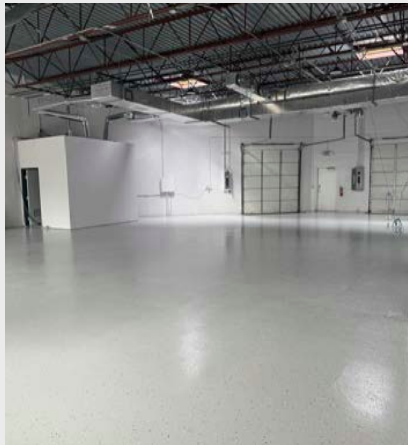
DATE AVAILABLE: 9/1/2026

LEASE RATE: Contact Broker

COMMENTS: Warehouse can be expanded - As Shown



# FLOOR PLAN



SUITE NUMBER

**B12 + B13**

TOTAL SF

**8,273 SF**

WAREHOUSE SF: 2,953 SF

OFFICE SF: 5,230 SF

GRADE LEVELS: 2  
DOOR(S):

DATE AVAILABLE: IMMEDIATE

LEASE RATE: Contact Broker

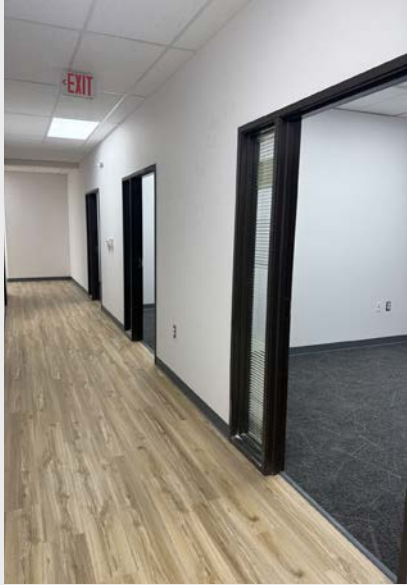
COMMENTS: Move in ready space



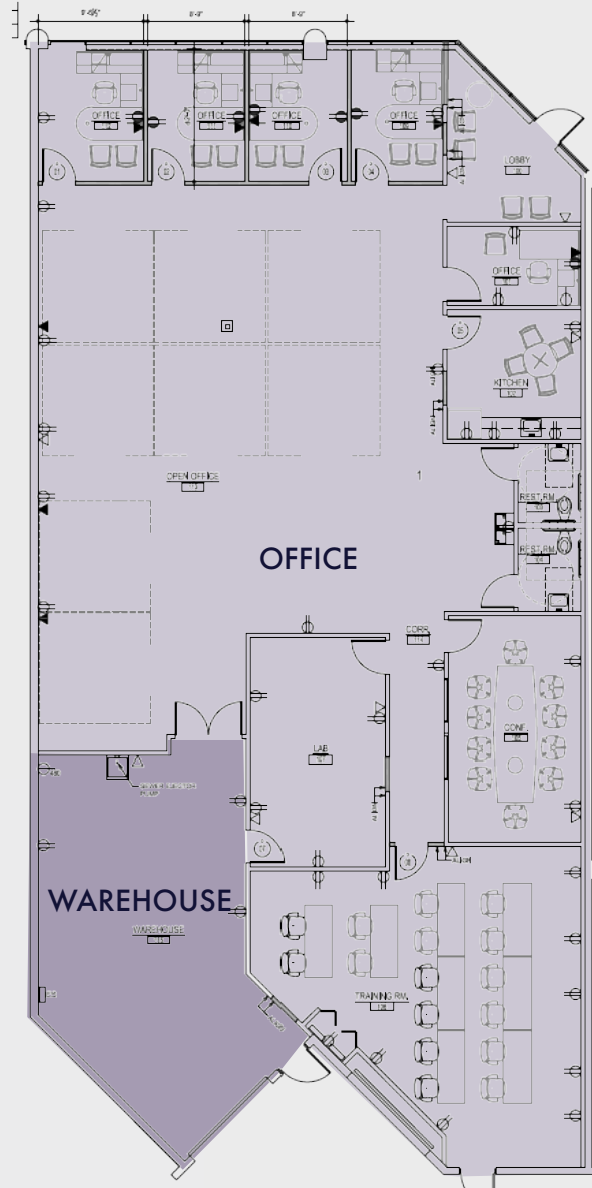
# PHOTOS

SUITE NUMBER

# B12 + B13



# FLOOR PLAN



SUITE NUMBER

# C7

TOTAL SF

# 4,950 SF

WAREHOUSE SF: 746 SF

OFFICE SF: 4,204 SF

GRADE LEVELS: 1  
DOOR(S): 1

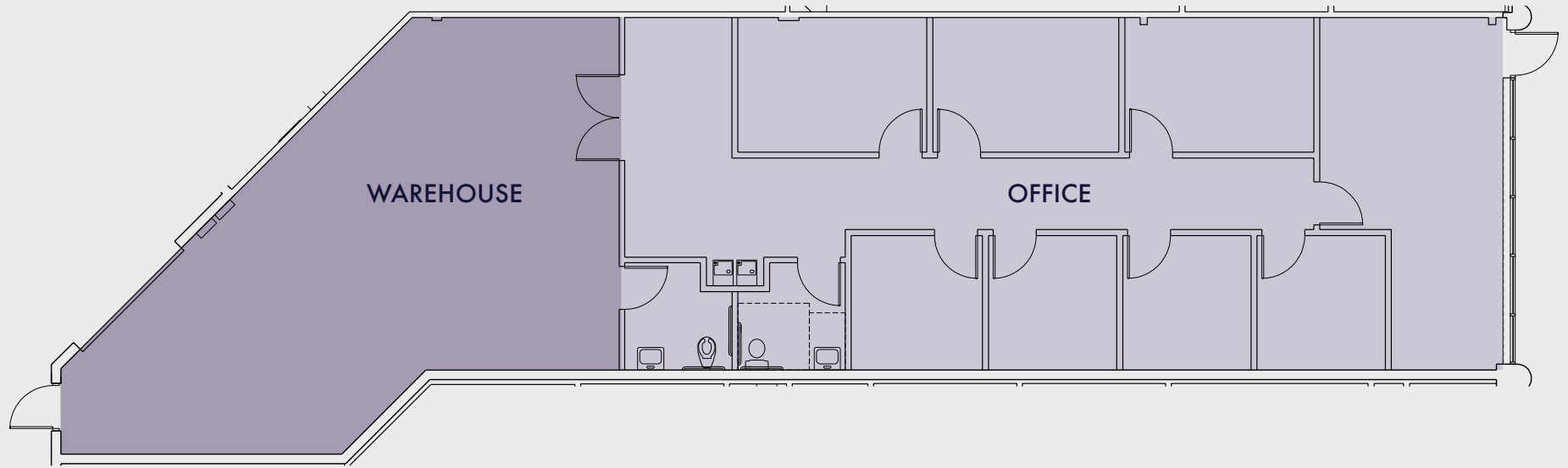
DATE AVAILABLE: IMMEDIATE

LEASE RATE: Contact Broker

COMMENTS: Warehouse can be expanded



# FLOOR PLAN



SUITE NUMBER

**C17**

TOTAL SF

**2,389 SF**

WAREHOUSE SF:

820 SF

OFFICE SF:

1,569 SF

GRADE LEVELS DOOR(S):

1

DATE AVAILABLE:

IMMEDIATE

LEASE RATE:

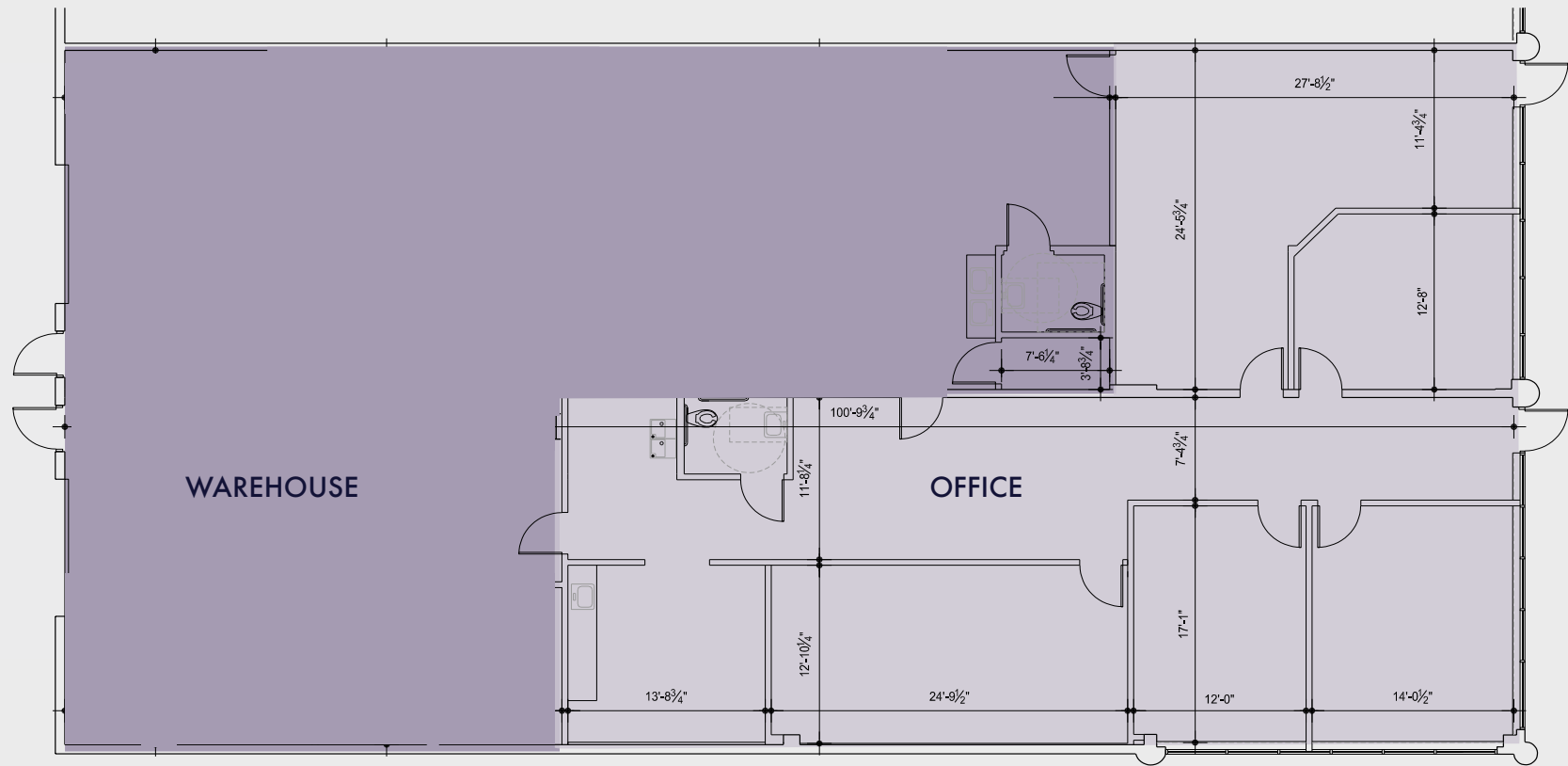
Contact Broker

COMMENTS:

Warehouse can be expanded



# FLOOR PLAN



SUITE NUMBER

**C20**

TOTAL SF

**5,219 SF**

WAREHOUSE SF: **2,742 SF**

OFFICE SF: **2,477 SF**

GRADE LEVELS DOOR(S): **2**

DATE AVAILABLE: **IMMEDIATE**

LEASE RATE: **Contact Broker**

COMMENTS: **Move in ready space**



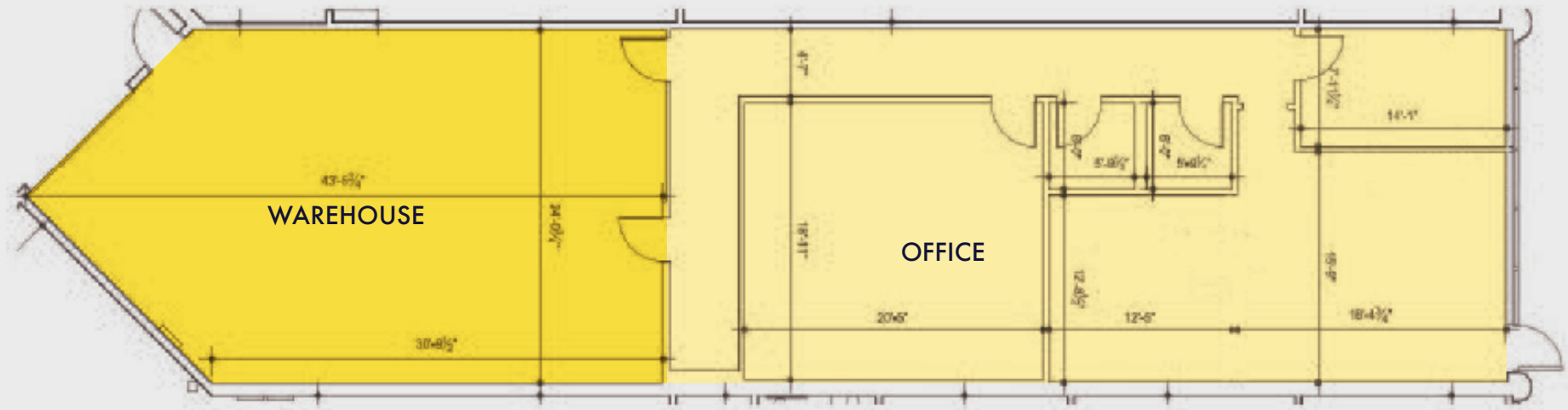
# PHOTOS

SUITE NUMBER

# C20



# FLOOR PLAN



SUITE NUMBER

**D5**

TOTAL SF

**2,310 SF**

WAREHOUSE SF: 902 SF

OFFICE SF: 1,408 SF

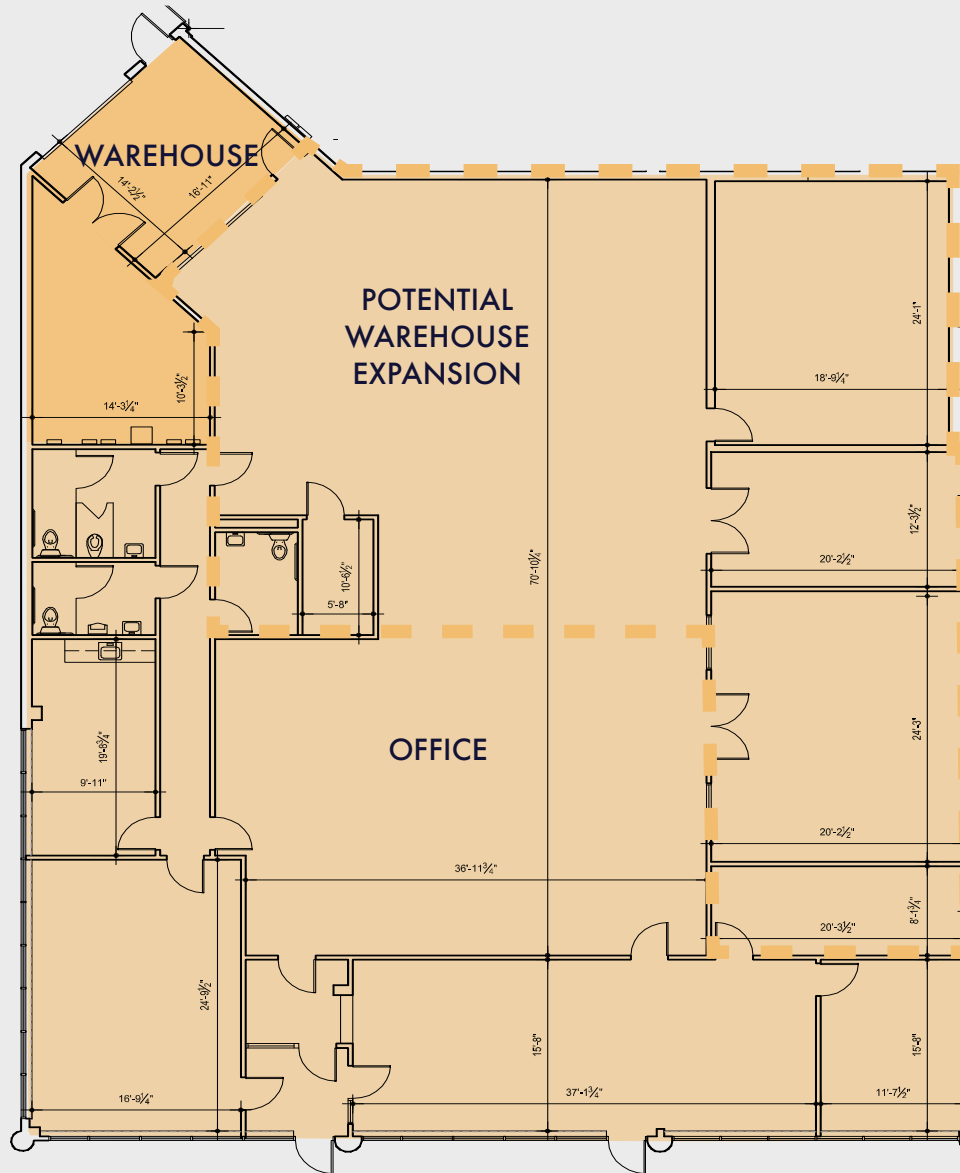
GRADE LEVELS DOOR(S): 1

DATE AVAILABLE: IMMEDIATE

LEASE RATE: Contact Broker



# FLOOR PLAN



SUITE NUMBER

# E1

TOTAL SF

# 6,840 SF

WAREHOUSE SF: 539 SF

OFFICE SF: 6,301 SF

GRADE LEVELS  
DOOR(S): 1

DATE AVAILABLE: IMMEDIATE

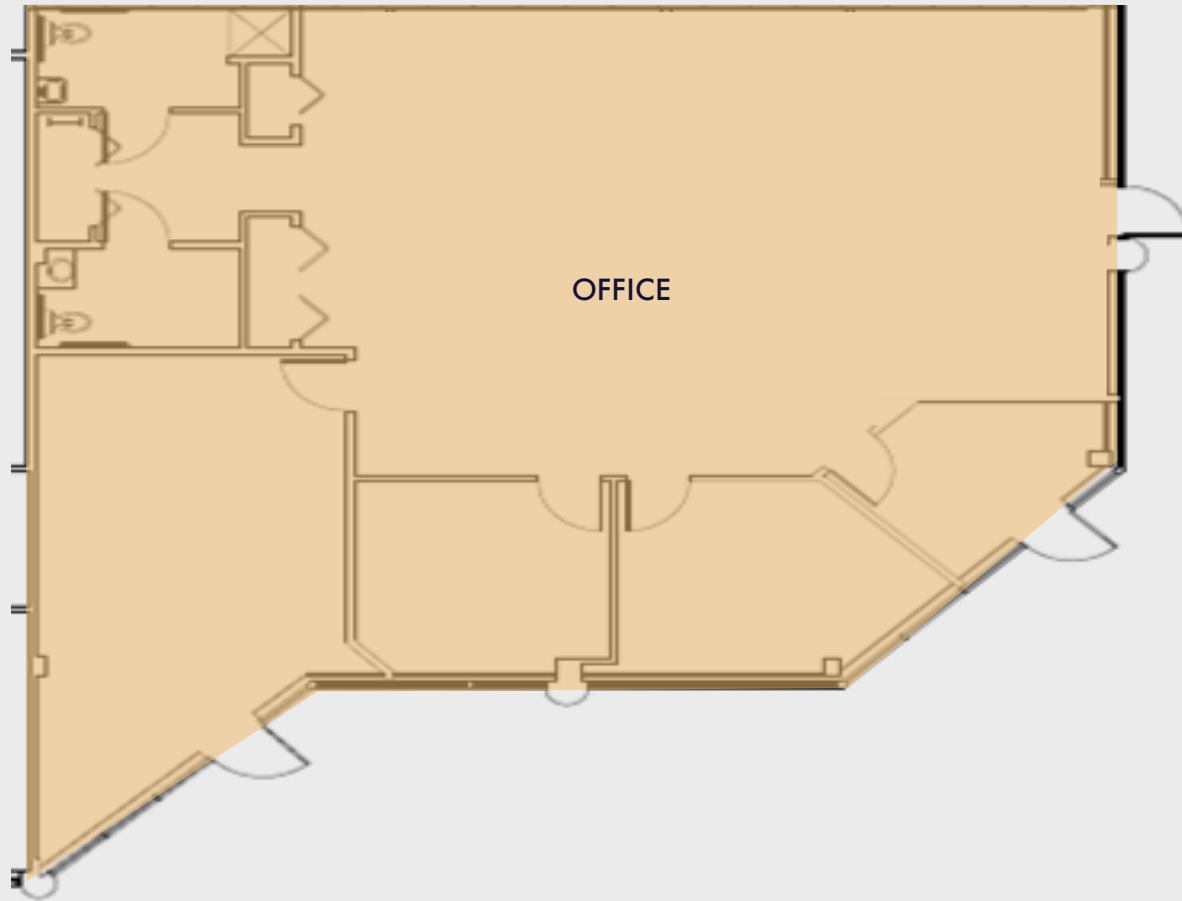
LEASE RATE: Contact Broker

POWER: 240V 3P 200AMP  
w/ ability for  
480V 3P 200 AMP

COMMENTS: Warehouse can be  
expanded to suit



# FLOOR PLAN



SUITE NUMBER

**E15**

TOTAL SF

**2,189 SF**

WAREHOUSE SF: NA

OFFICE SF: 2,189 SF

GRADE LEVELS  
DOOR(S): NA

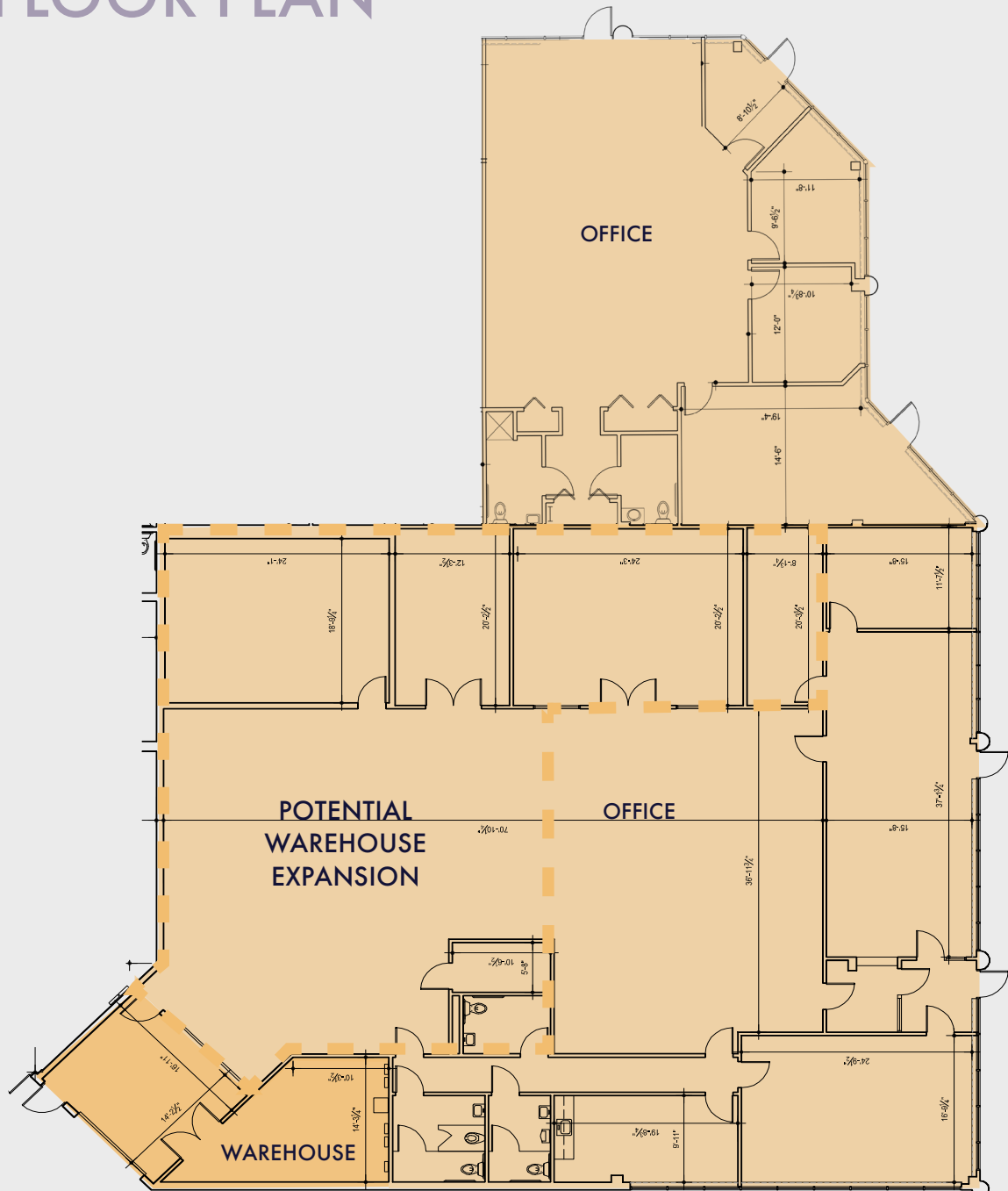
DATE AVAILABLE: IMMEDIATE

LEASE RATE: Contact Broker

COMMENTS: This suite is 100%  
office



# FLOOR PLAN



SUITE NUMBER

# E1 + E15

TOTAL SF

# 9,029 SF

WAREHOUSE SF: 539 SF

OFFICE SF: 8,490 SF

GRADE LEVELS  
DOOR(S): 1

DATE AVAILABLE: IMMEDIATE

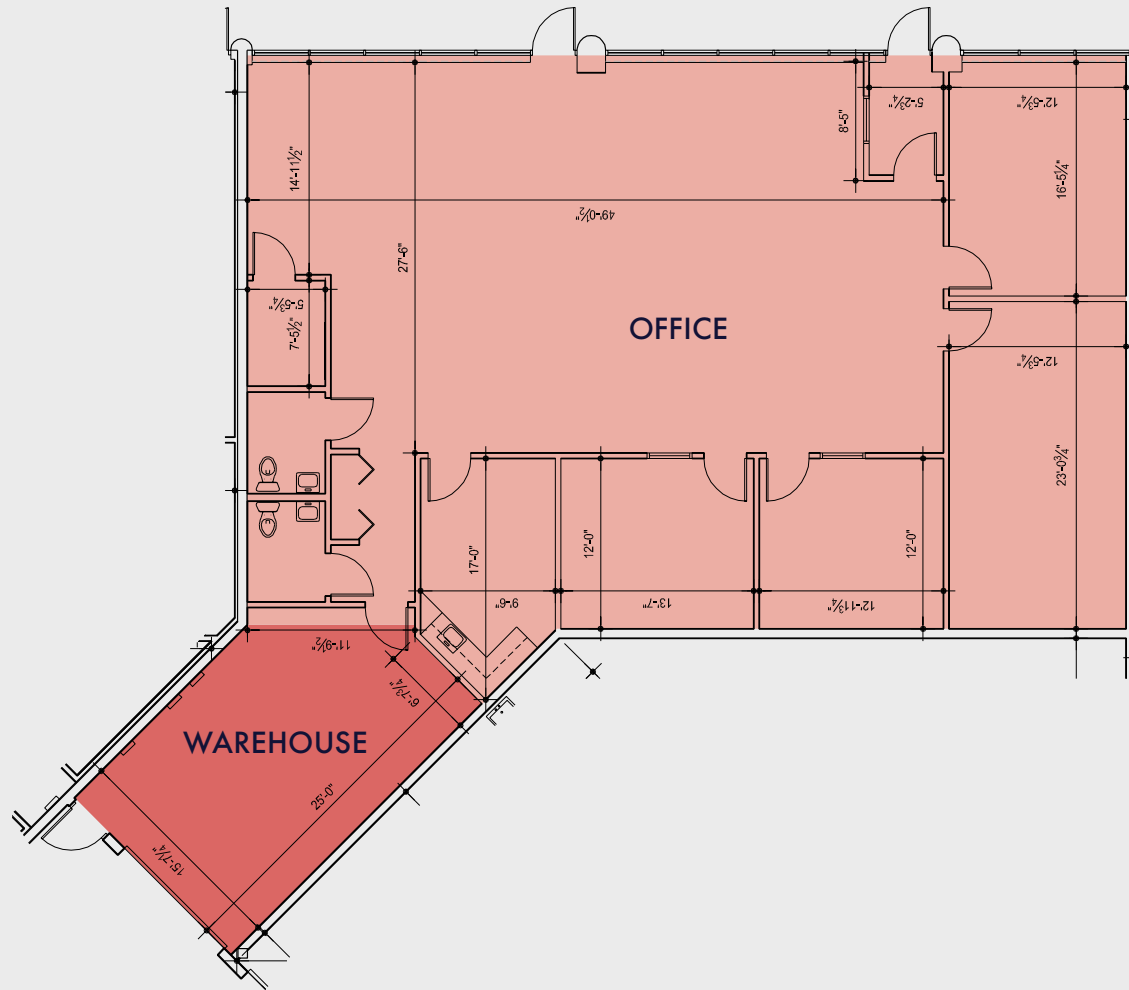
LEASE RATE: Contact Broker

POWER: 240V 3P 200AMP  
w/ ability for  
480V 3P 200 AMP

COMMENTS: Warehouse can be  
expanded to suit



# FLOOR PLAN



SUITE NUMBER

## F26

TOTAL SF

# 2,990 SF

WAREHOUSE SF: 407 SF

OFFICE SF: 2,583 SF

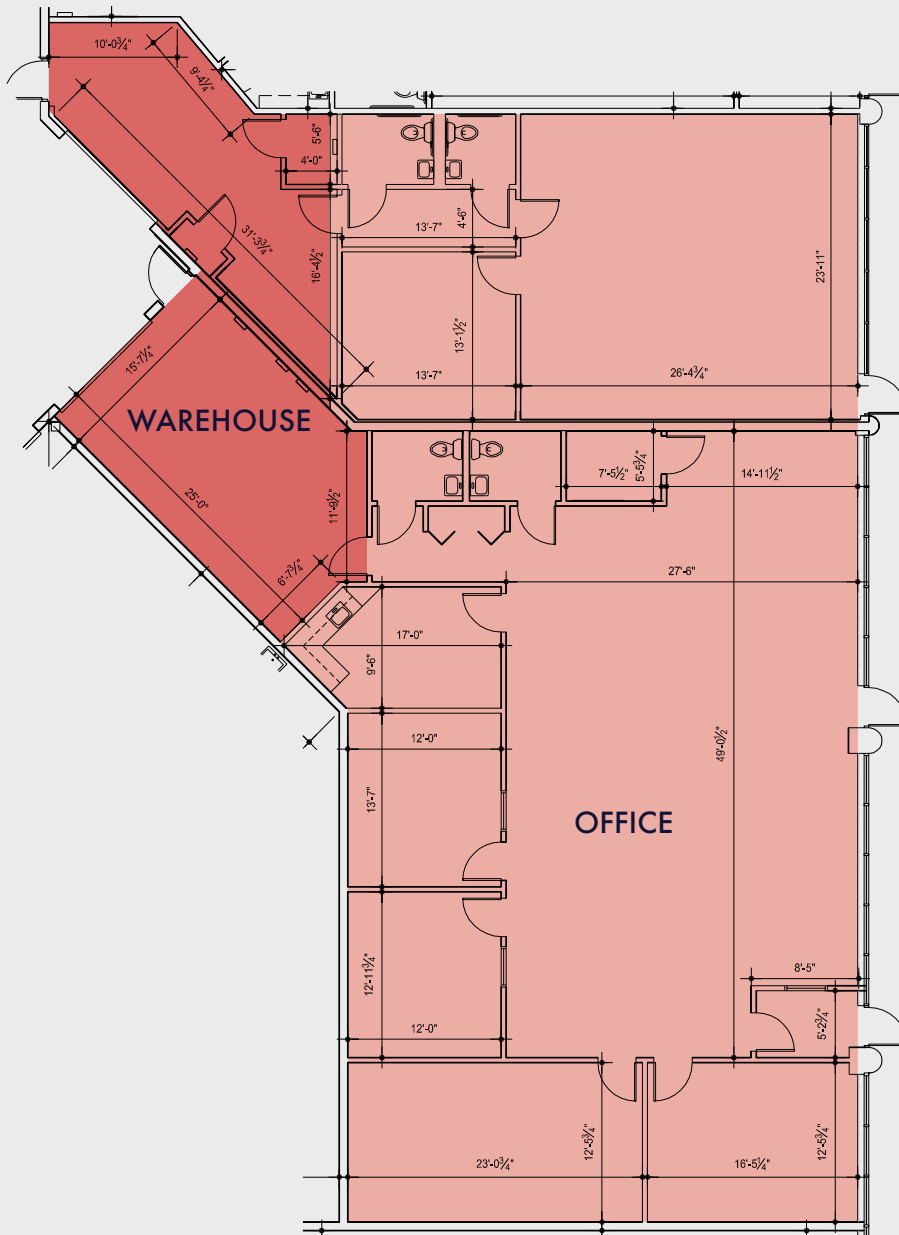
GRADE LEVELS: 1  
DOOR(S): 1

DATE AVAILABLE: IMMEDIATE

LEASE RATE: Contact Broker



# FLOOR PLAN



SUITE NUMBER

## F26 + F28

TOTAL SF

# 4,470 SF

WAREHOUSE SF: 798 SF

OFFICE SF: 3,677 SF

GRADE LEVELS: 2  
DOOR(S):

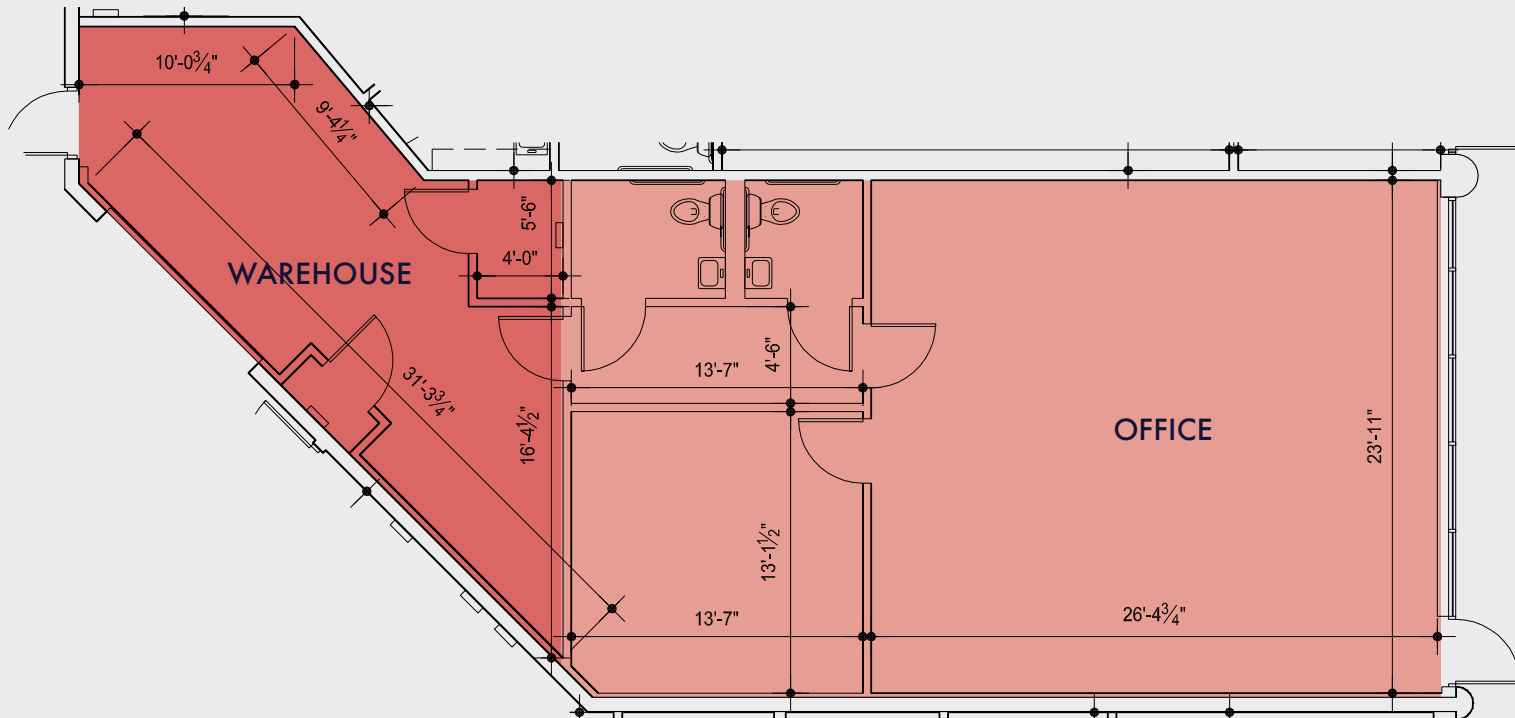
DATE AVAILABLE: IMMEDIATE

LEASE RATE: Contact Broker

COMMENTS: Warehouse can be expanded



# FLOOR PLAN



SUITE NUMBER

# F28

TOTAL SF

# 1,480 SF

WAREHOUSE SF:

386 SF

OFFICE SF:

1,094 SF

GRADE LEVELS DOOR(S):

1

DATE AVAILABLE:

IMMEDIATE

LEASE RATE:

Contact Broker



# CORPORATE NEIGHBORS



# CONNECTED LOCATION





# HAGGERTY INNOVATION CENTER

## CONTACTS:

### EDWARD WUJEK

Vice Chairman

+1 248 351 2058

[edward.wujek@cbre.com](mailto:edward.wujek@cbre.com)

### PHIL SPRAGUE

Vice President

+1 248 351 2032

[philip.sprague@cbre.com](mailto:philip.sprague@cbre.com)

### KELLY CUBBIN

Vice President

+1 248 936 6852

[kelly.cubbin@cbre.com](mailto:kelly.cubbin@cbre.com)

© 2024 CBRE, Inc. All rights reserved. This information has been obtained from sources believed reliable, but has not been verified for accuracy or completeness. You should conduct a careful, independent investigation of the property and verify all information. Any reliance on this information is solely at your own risk. CBRE and the CBRE logo are service marks of CBRE, Inc. All other marks displayed on this document are the property of their respective owners, and the use of such logos does not imply any affiliation with or endorsement of CBRE. Photos herein are the property of their respective owners. Use of these images without the express written consent of the owner is prohibited. PMStudio\_Dec2024

**CBRE**

**AVISTONE**  
Investing Where Industry Works