

# VS-110 | RESTAURANT SUITE



Corner Location Fronting Village Plaza



2,382 SF



**Steven Neville, Broker**  
**Natalie Butler, Broker**  
696 McVey Ave., Ste. 202 | Lake Oswego, OR 97034  
503.241.1222 | [www.nevillebutler.com](http://www.nevillebutler.com)



**REAL ESTATE SERVICES**

**Russell Huntamer, CCIM**  
**Eli Harrison, Broker**  
600 SW Columbia St., Ste. 6100 | Bend, OR 97702  
541.383.2444 | [www.CompassCommercial.com](http://www.CompassCommercial.com)



## VS-110 | 2,382 SF

Cascade Village Shopping Center is an approximately 367,000 square foot open-air center situated at the gateway to Bend, Oregon. Located at the confluence of Highways 20 and 97 on Bend's north end, the center has exposure to over 67,680 cars per day (ODOT 2023) and recorded 3.5 million visits in 2025, a 5.6% increase year over year and 13.1% over three years, compared to 2.9 million visits at Costco across the street.

### SUITE DESCRIPTION

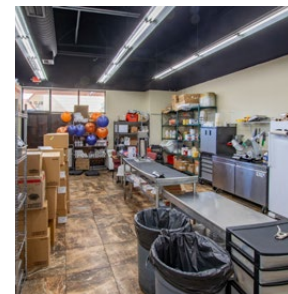
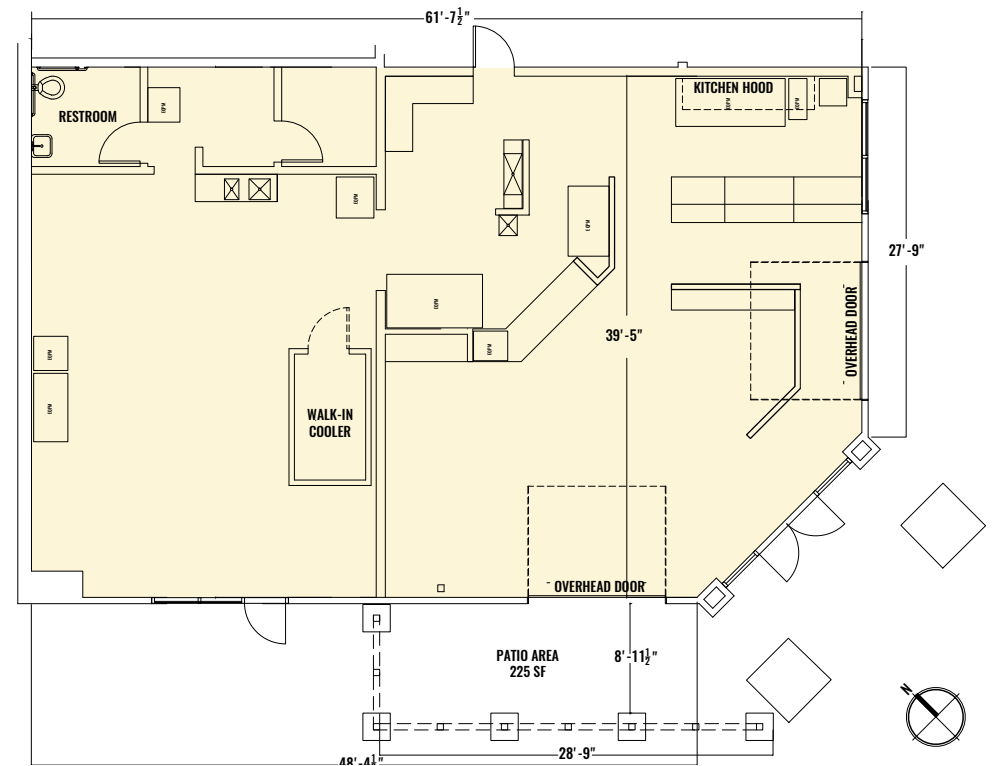
This restaurant is located on one of the prime village corners at the entrance to a new generation Ashley Homestore and across from thriving restaurants on two opposite corners.

### VILLAGE PLAZA

The nearby Village Plaza is the center's social hub offering a welcoming outdoor seating area and a charming plaza area for families and friends to gather.

### SUITE HIGHLIGHTS

- Prominent corner restaurant space
- Patio seating
- 12' Hood and 6x10 walk-in cooler
- Over 70' of frontage on Village Plaza
- Angle parking in front of space
- 400-Amp electrical service
- TDS high-speed internet and gas services available
- NNN's estimated at \$9.86/SF/Yr.
- Marketing fund at \$1.00/SF/Yr.



Brokers are licensed in the state of Oregon. This information has been furnished from sources we deem reliable, but for which we assume no liability. This is an exclusive listing. The information contained herein is given in confidence with the understanding that all negotiations pertaining to this property be handled through Compass Commercial Real Estate Services. All measurements are approximate.

For More Information, Please Contact:



541.383.2444

**Russell Huntamer, CCIM**

rh@compasscommercial.com

**Eli Harrison, Broker**

eharrison@compasscommercial.com



503.241.1222

**Steven Neville, Broker**

steve@nevillebutler.com

**Natalie Butler, Broker**

natalie@nevillebutler.com