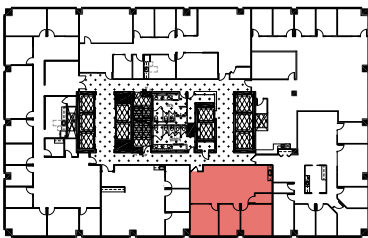
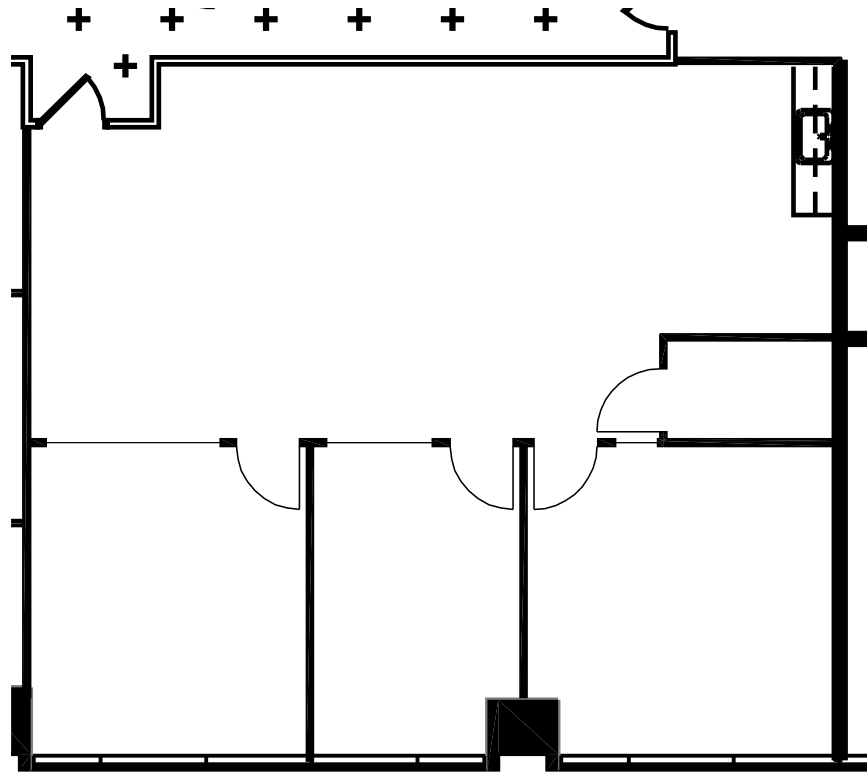


**refined,  
curated  
& capitalized.**

SUITE **1340** AREA **1,591 RSF**

*the* **410**

**410 17<sup>TH</sup> STREET  
DENVER, COLORADO**



KEY PLAN

**Jamie Gard**  
303.260.4341  
Jamie.Gard@nmrk.com

**Whitney Hake**  
303.260.4202  
Whitney.Hake@nmrk.com

**Grace Lessard**  
303.260.4210  
Grace.Lessard@nmrk.com

**NEWMARK**

 **Cress Capital**