



ONE SANSOME
SAN FRANCISCO

NEWMARK

Innovation Meets Opportunity

A San Francisco Icon Reimagined

One Sansome is more than just an address; it is a statement. This 42-story, Class A landmark defines the San Francisco Financial District skyline and offers a unique experience where historic prestige meets innovative design, delivering one-of-a-kind amenities in the heart of the San Francisco Financial District.

On the ground floor, the reimagined Conservatory includes nearly 16,000 square feet of event space, highlighted by the Atrium, Holbrook House bar and restaurant, and the elegant North Lobby. This unique amenity provides an exceptional venue for events, meetings, and gatherings, combining sophisticated hospitality with a distinctive ambiance.

Additionally, the building features efficient destination elevators, move-in-ready furnished offices, a tenant lounge and business center, a fully equipped gym, direct access to Montgomery Street Bart & Muni station.

onesansome.com



Building Amenities & Improvements

Experience the unique amenities at One Sansome, featuring a newly reimagined 16,000-square-foot ground floor conservatory and atrium designed by Albert Pissis in 1910. The conservatory is perfect for hosting special events and various gatherings and is unique in the Bay Area. The Holbrook House, located on the ground floor, offers a restaurant and bar with bespoke interiors, providing an exceptional hospitality experience.



One Sansome by the Numbers

42

STORIES

624,104

TOTAL RSF

17,500

TYPICAL FLOOR PLATE

12'6"

CEILINGS

LEED Platinum
& Energy Star

CERTIFIED

24/7
Access

SECURITY



At the Center of Connectivity

Perfect central location with direct secure access to the Montgomery Street Station, BART and Muni. One Sansome is located on the city's vibrant core, with plenty of amenities of the Financial District.



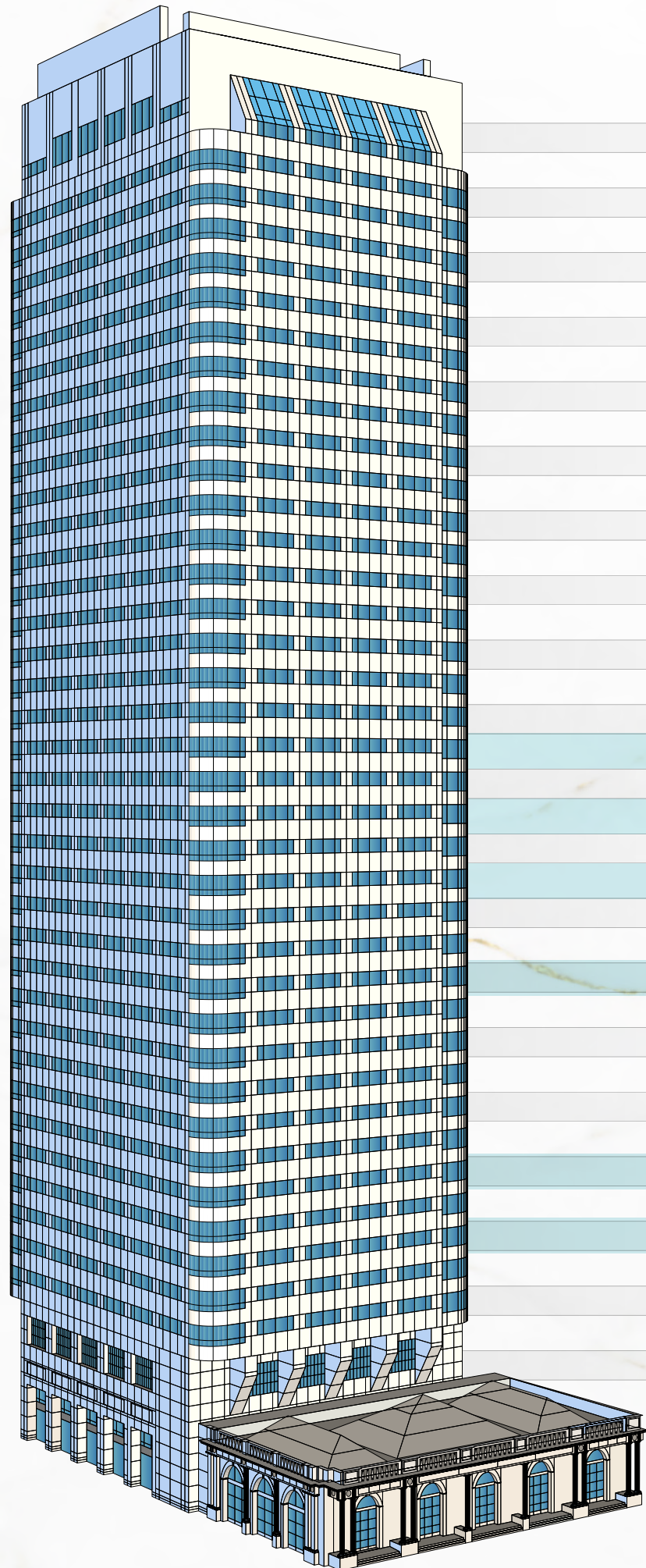
DIRECT ACCESS TO MONTGOMERY STREET BART/MUNI



 WALKING TIME (min)	 DRIVING TIME (min)
0	10
5	20
10	25
12	27
22	35
	50
	60

P Parking

Your Office Space - Current Availabilities



42				
41				
40				
39				
38				
37				
36				
35				
34				
33				
32				
31				
30				
29				
28				
27				
26				
25				
24				
23				
22	STE 2270: 4,899 SF	VIEW FLOOR PLAN		
21				
20	STE 2070: 1,654 SF	VIEW FLOOR PLAN		
19				
18	STE 1800: 5,701 SF	VIEW FLOOR PLAN	1810: 3,009 SF	VIEW FLOOR PLAN
17				
16				
15	STE 1500: 7,222 SF	VIEW FLOOR PLAN		
14				
13				
12				
11				
10				
9	STE 925: 3,015 SF	VIEW FLOOR PLAN		
8				
7	STE 725: 2,265 SF	VIEW FLOOR PLAN	740: 1,330 SF	VIEW FLOOR PLAN
6				
5				
4				
3				
Ground				

7th Floor | Suite 725

2,265 SF

Available in 30 Days

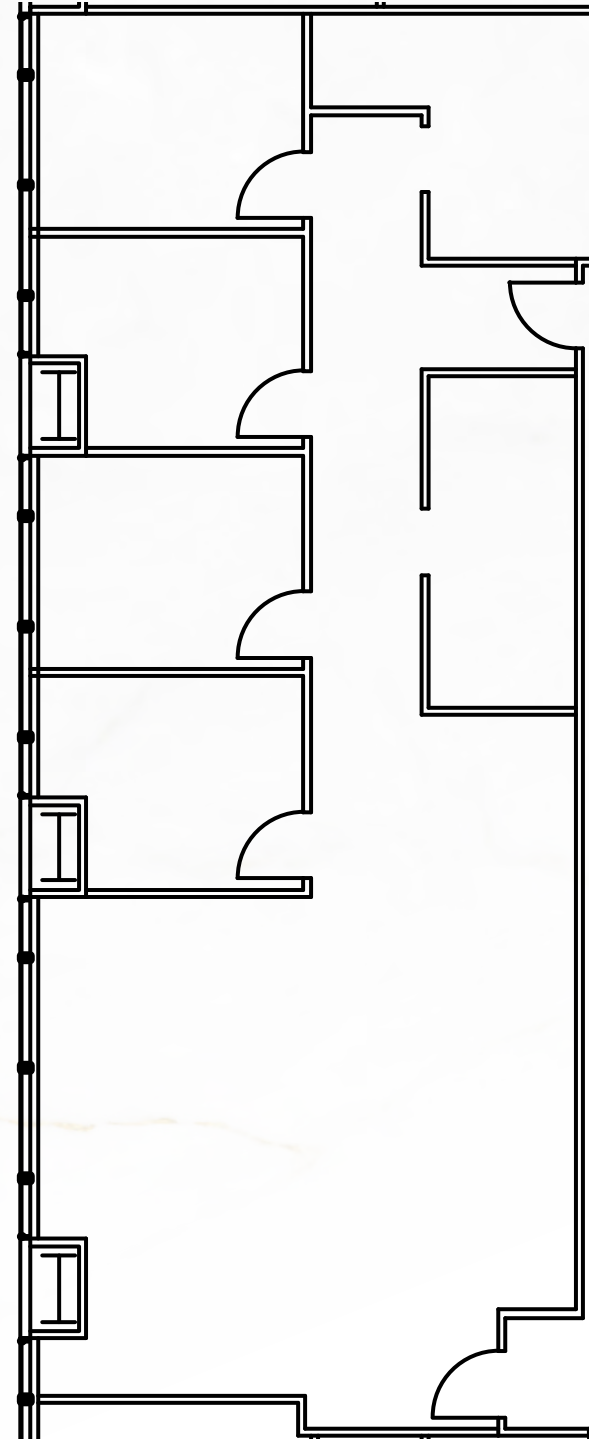
4 Private Offices

1 Conference Room

Kitchen

Storage Area

Open Area for Workstations



[VIEW FULL AVAILABILITIES](#)

MIKE BROWN

415.274.4423

mike.brown@nmrk.com

ROMAN ADLER

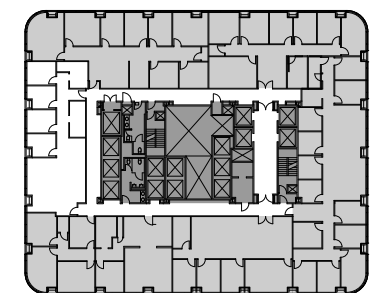
415.274.4434

roman.adler@nmrk.com

AARON GILLESPIE

415.445.5153

aaron.gillespie@nmrk.com



SUTTER ST.

SANSOME ST.

7th Floor | Suite 740

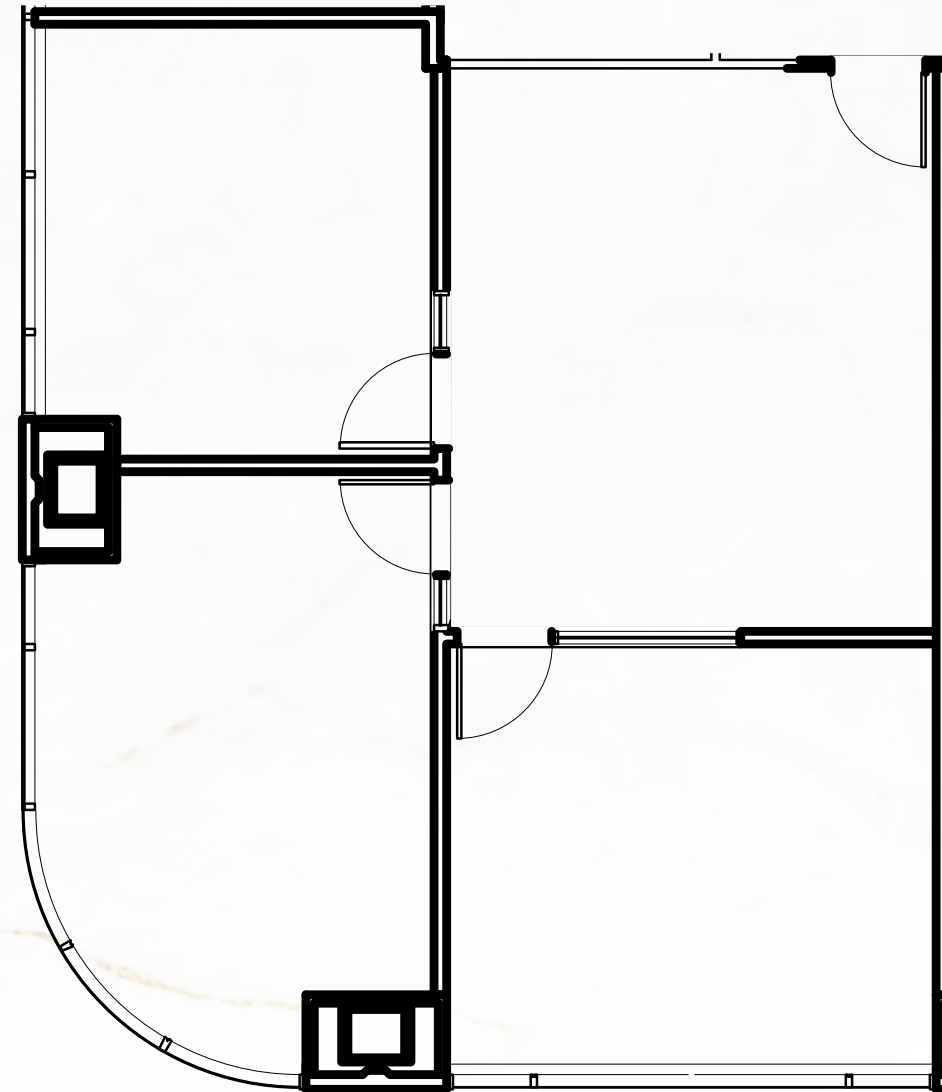
[VIEW FULL AVAILABILITIES](#)

1,330 SF

Available in 30 Days

3 Windowline Offices/Meeting Rooms

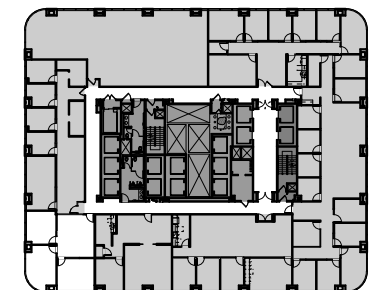
Kitchenette



MIKE BROWN
415.274.4423
mike.brown@nmrk.com

ROMAN ADLER
415.274.4434
roman.adler@nmrk.com

AARON GILLESPIE
415.445.5153
aaron.gillespie@nmrk.com



SANSOME ST.

SUTTER ST.

9th Floor | Suite 925

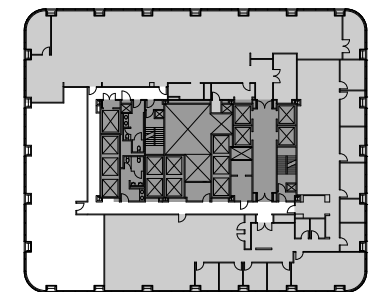
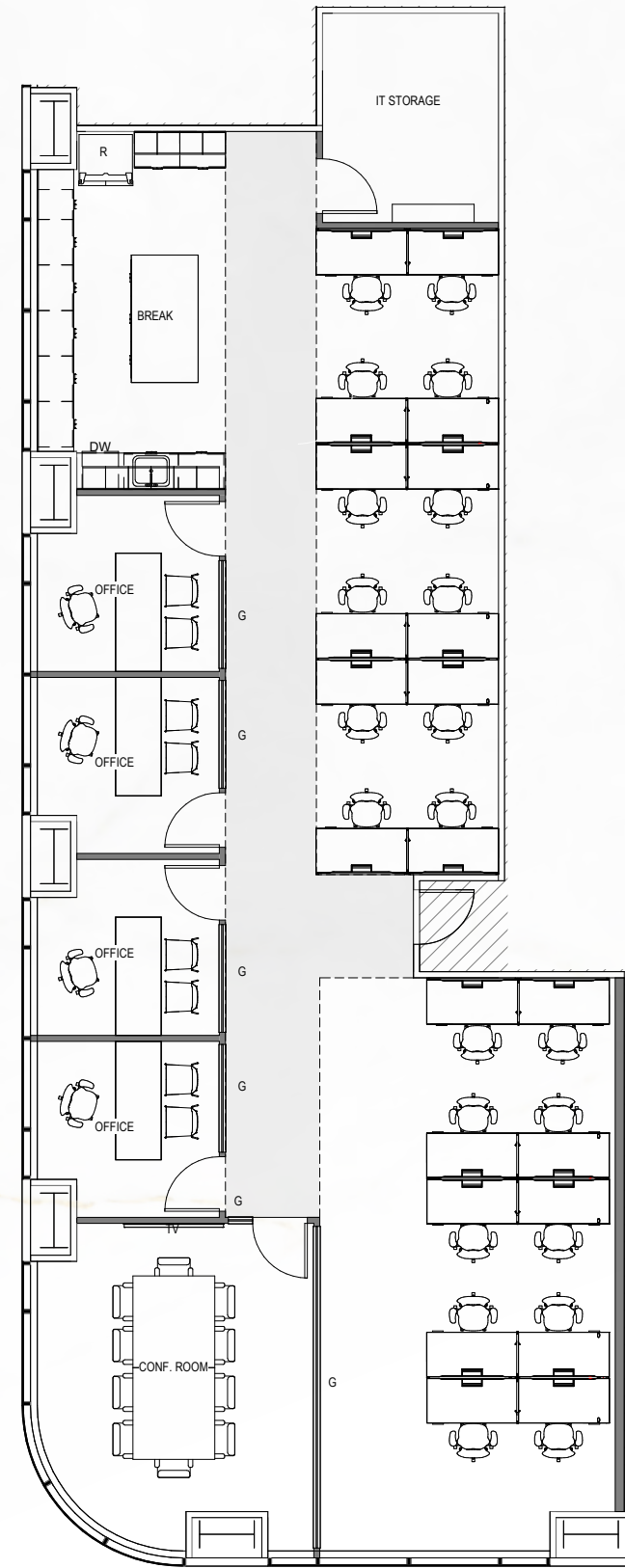
3,015 SF

Available Now

Spec Suite Underway (Open Plan with Kitchen)

Private Offices/Meetings Rooms Can Be Turnkeyed

[VIEW FULL AVAILABILITIES](#)



MIKE BROWN
415.274.4423
mike.brown@nmrk.com

ROMAN ADLER
415.274.4434
roman.adler@nmrk.com

AARON GILLESPIE
415.445.5153
aaron.gillespie@nmrk.com

15th Floor | Suite 1500

[VIEW FULL AVAILABILITIES](#)

7,222 SF

Available Now

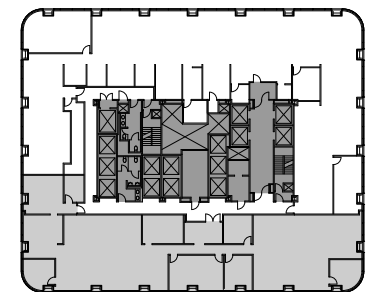
Shell Condition



MIKE BROWN
415.274.4423
mike.brown@nmrk.com

ROMAN ADLER
415.274.4434
roman.adler@nmrk.com

AARON GILLESPIE
415.445.5153
aaron.gillespie@nmrk.com



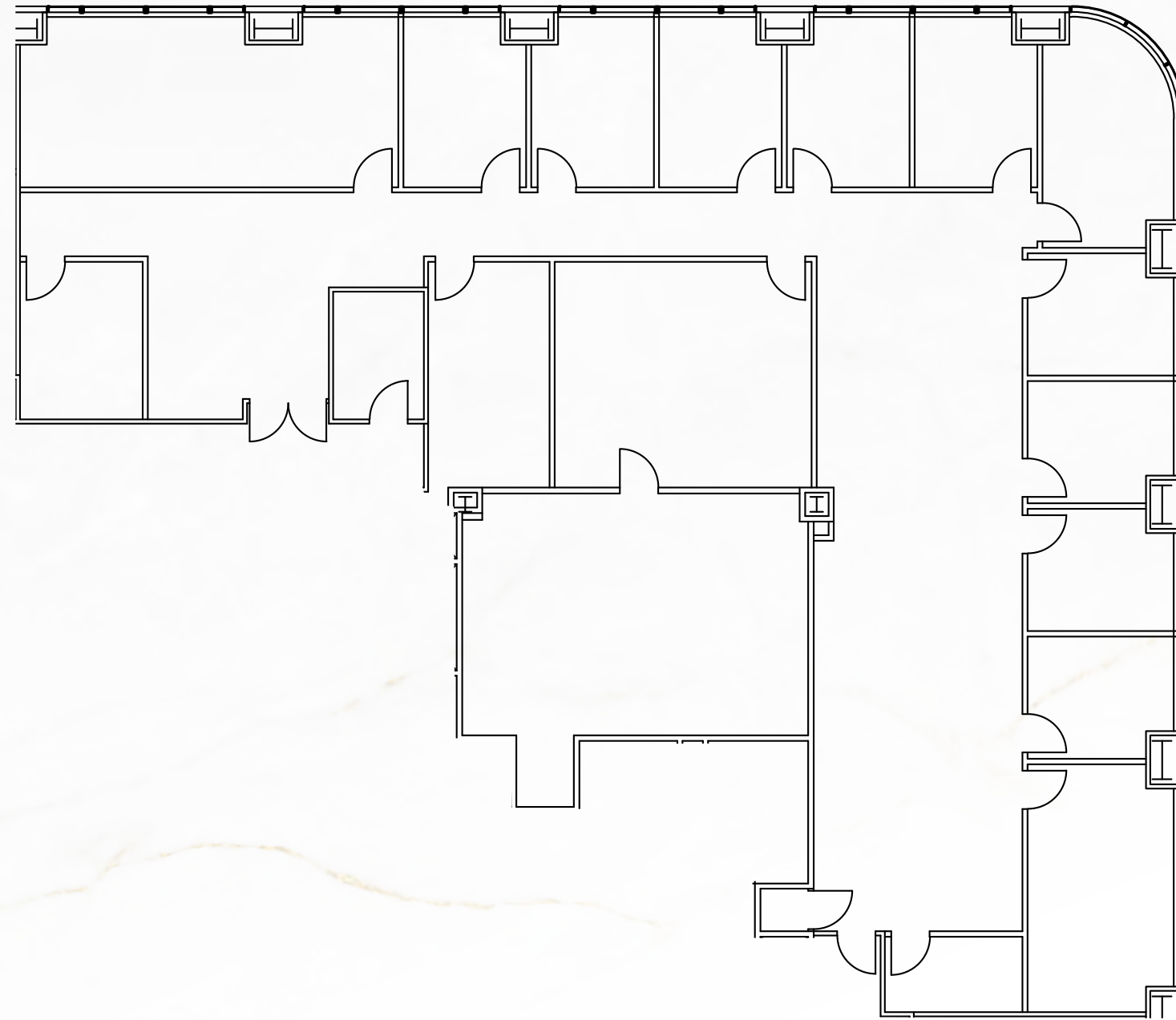
SUTTER ST.

SANSOME ST.

18th Floor | Suite 1800

[VIEW FULL AVAILABILITIES](#)

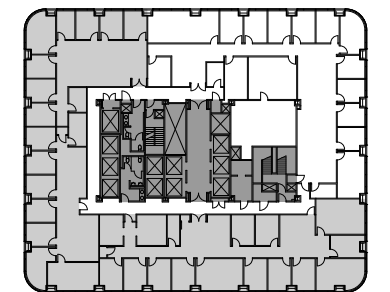
5,701 SF
Available Now
10 Offices
3 Conference Rooms
Kitchen
Reception



MIKE BROWN
415.274.4423
mike.brown@nmrk.com

ROMAN ADLER
415.274.4434
roman.adler@nmrk.com

AARON GILLESPIE
415.445.5153
aaron.gillespie@nmrk.com



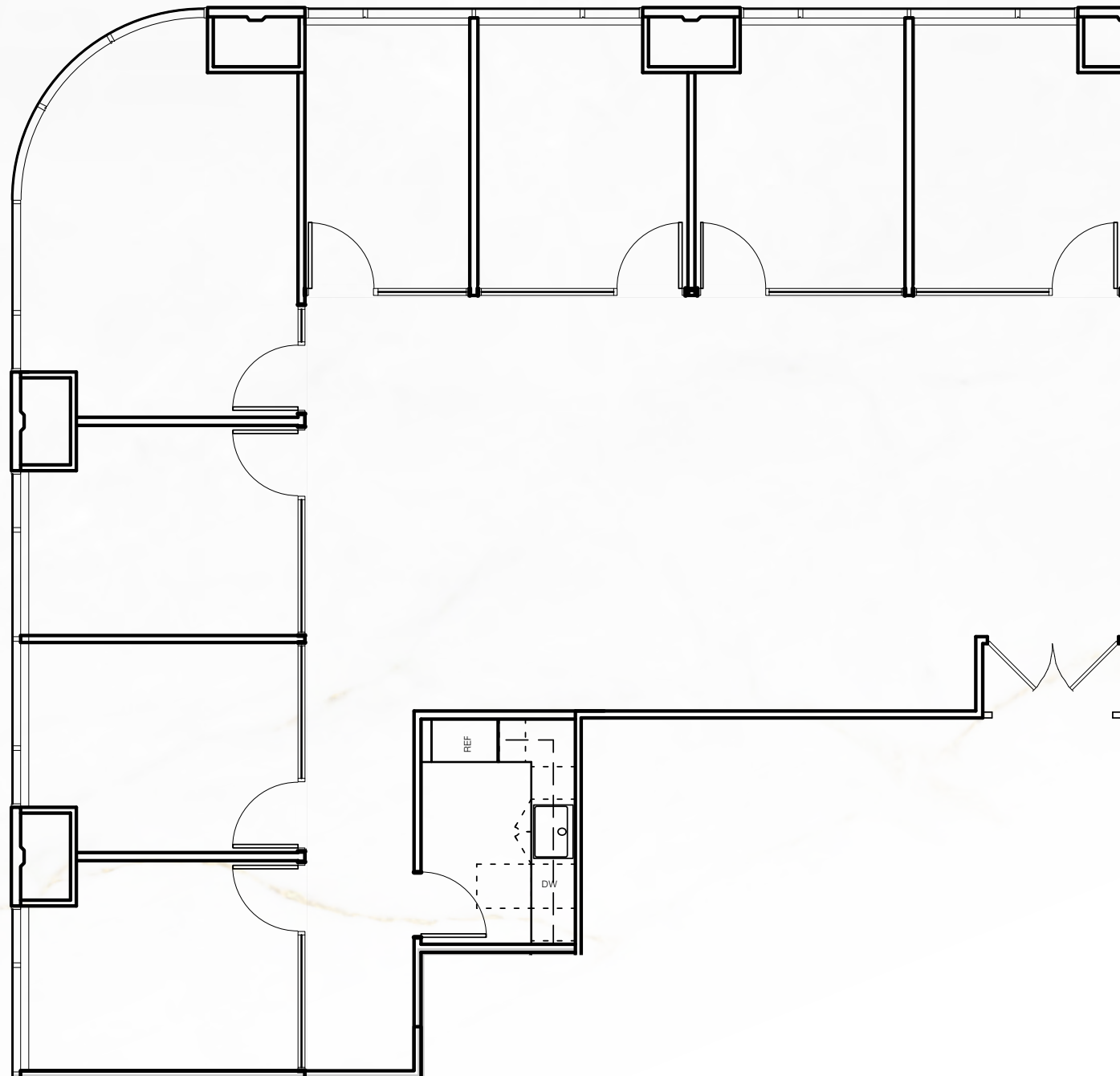
SUTTER ST.

SANSOME ST.

18th Floor | Suite 1810

[VIEW FULL AVAILABILITIES](#)

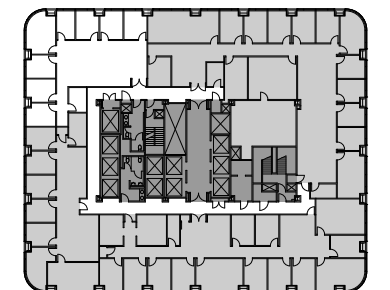
- 3,009 SF
- Available Now
- 7 Offices
- 1 Conference Room
- Kitchen
- Open Area



MIKE BROWN
415.274.4423
mike.brown@nmrk.com

ROMAN ADLER
415.274.4434
roman.adler@nmrk.com

AARON GILLESPIE
415.445.5153
aaron.gillespie@nmrk.com



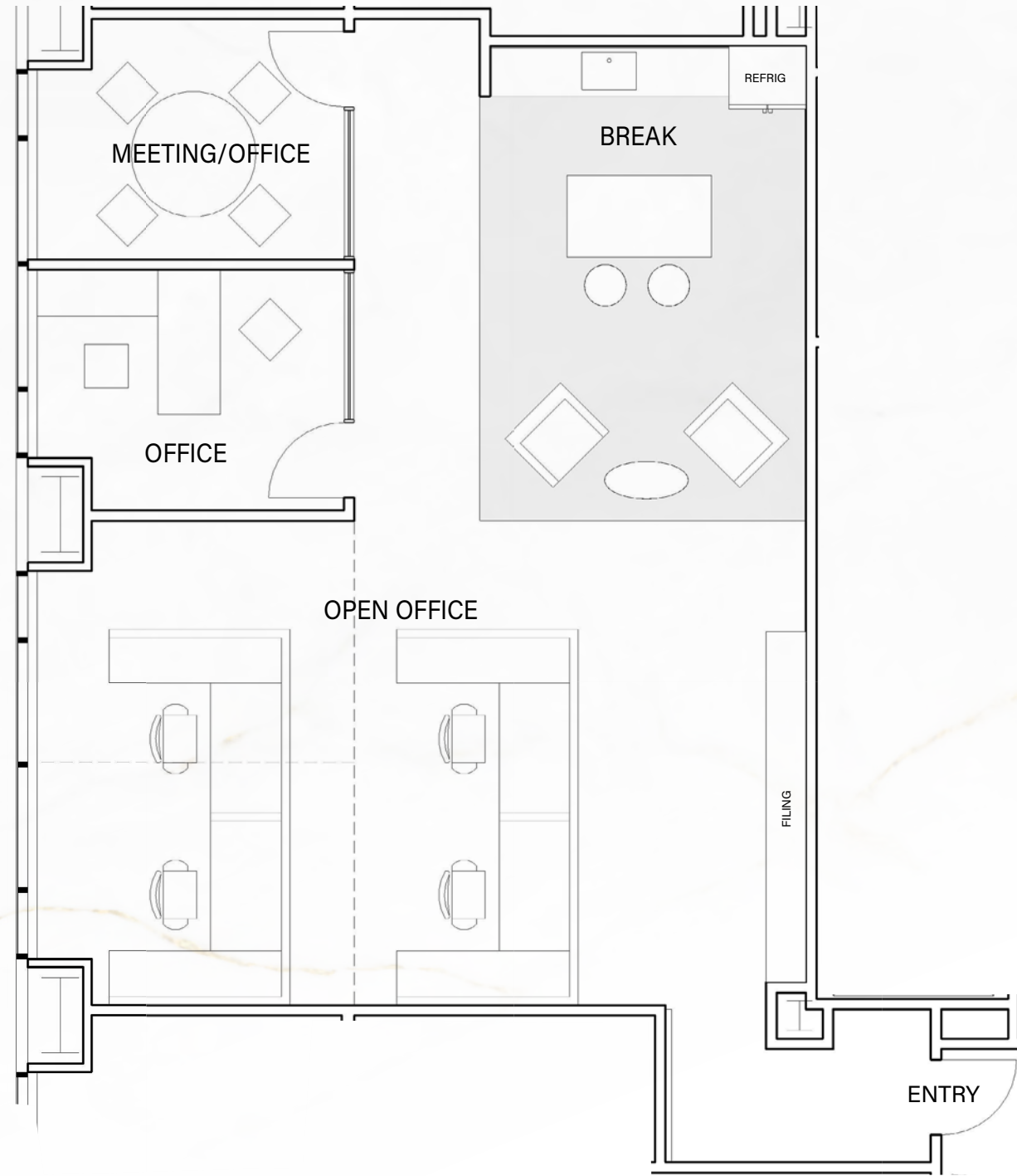
SUTTER ST.

SANSOME ST.

20th Floor | Suite 2070

[VIEW FULL AVAILABILITIES](#)

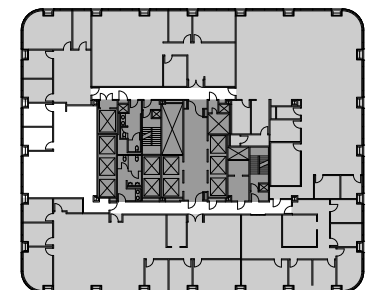
- 1,654 SF
- Available Now
- 2 Offices/Meetings rooms
- Kitchen
- Open Area



MIKE BROWN
415.274.4423
mike.brown@nmrk.com

ROMAN ADLER
415.274.4434
roman.adler@nmrk.com

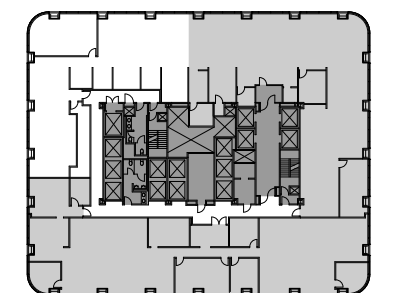
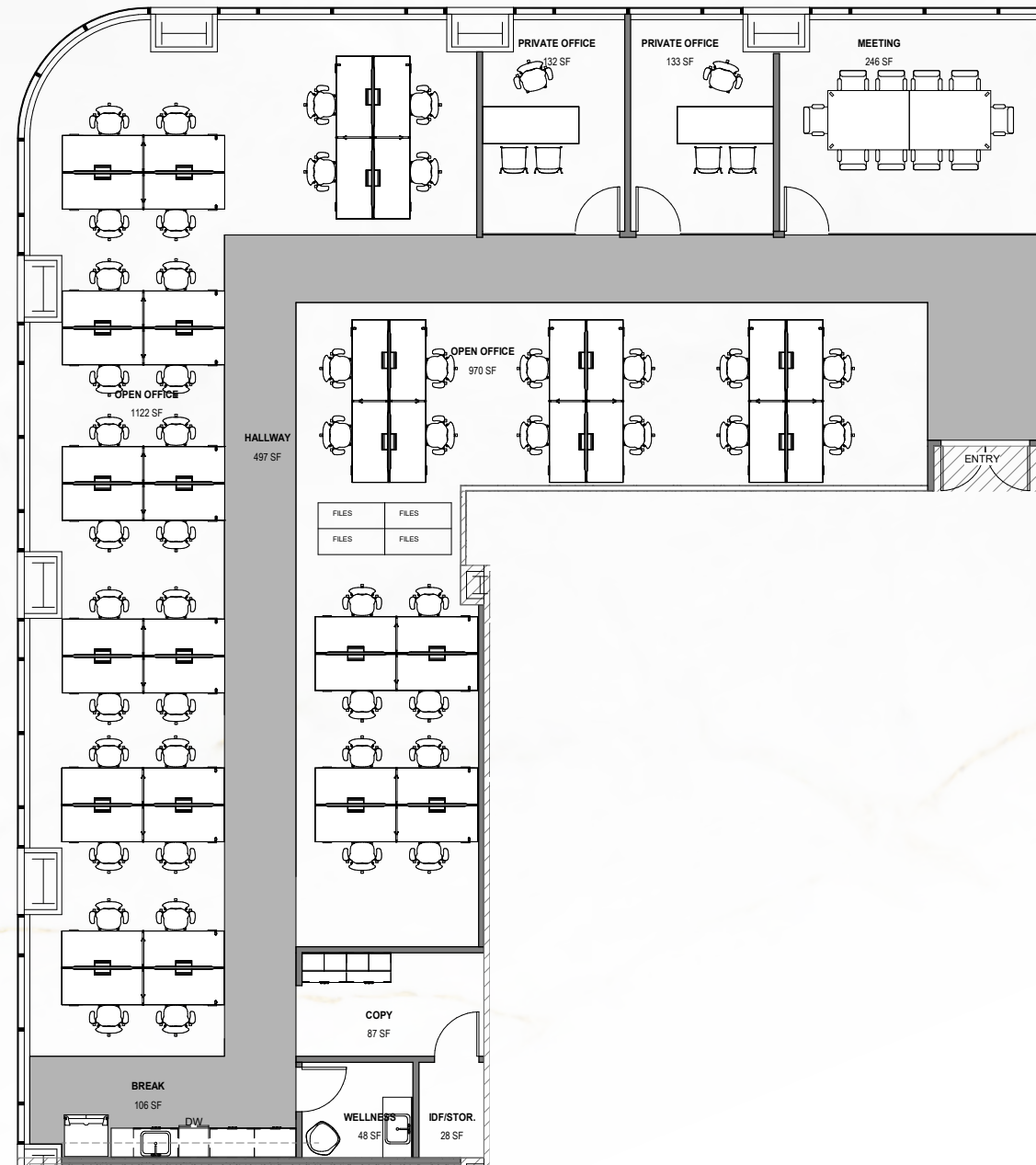
AARON GILLESPIE
415.445.5153
aaron.gillespie@nmrk.com



22nd Floor | Suite 2270

[VIEW FULL AVAILABILITIES](#)

- 4,899 SF
- Available Now
- Brand New Spec Suite
- 2 Offices
- 1 Conference Room
- Kitchen
- Open Area
- Room for Additional Enclosures



MIKE BROWN
415.274.4423
mike.brown@nrmk.com

ROMAN ADLER
415.274.4434
roman.adler@nrmk.com

AARON GILLESPIE
415.445.5153
aaron.gillespie@nrmk.com

Connected to Convenience

● Food / Restaurants

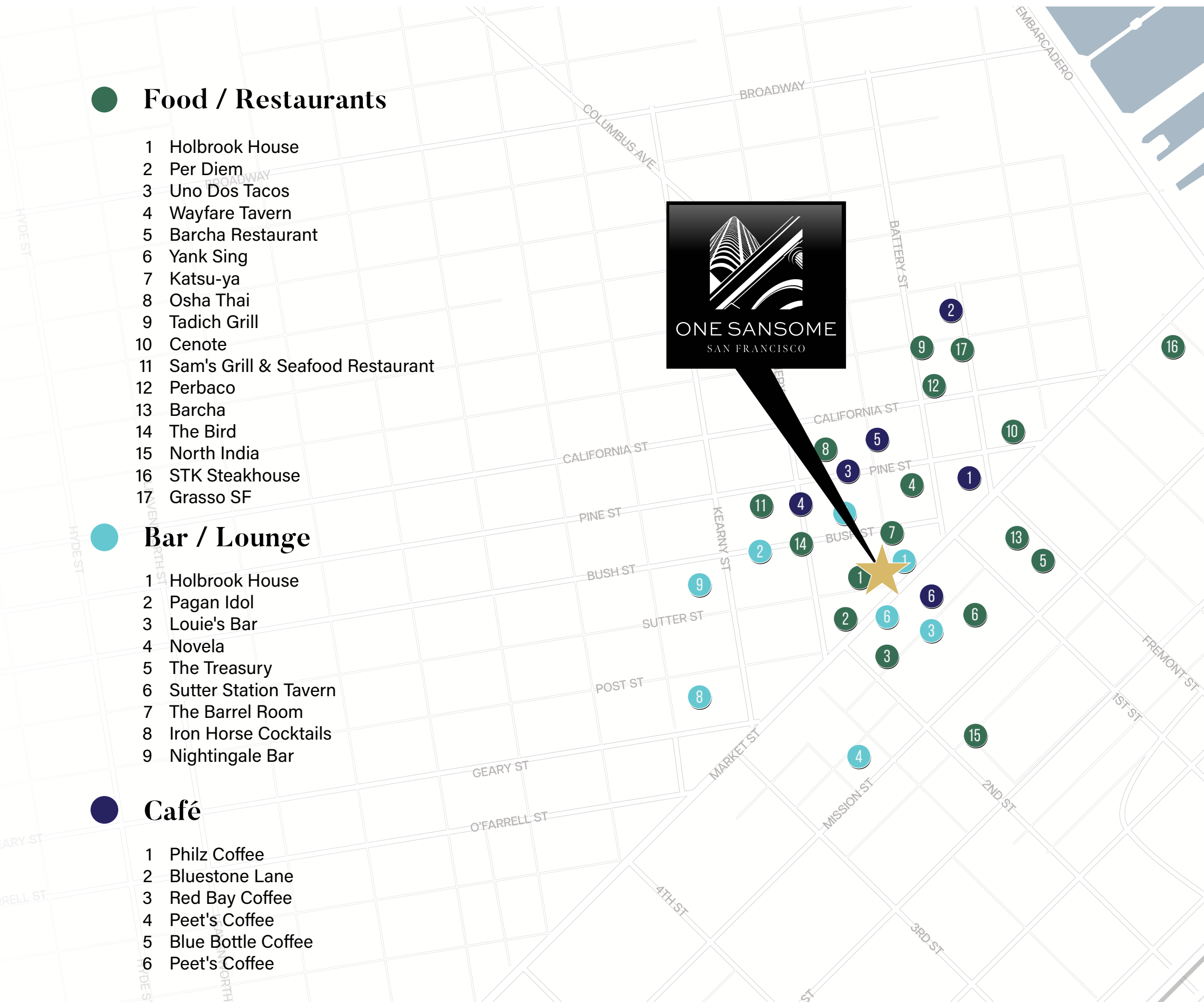
- 1 Holbrook House
- 2 Per Diem
- 3 Uno Dos Tacos
- 4 Wayfare Tavern
- 5 Barcha Restaurant
- 6 Yank Sing
- 7 Katsu-ya
- 8 Osha Thai
- 9 Tadich Grill
- 10 Cenote
- 11 Sam's Grill & Seafood Restaurant
- 12 Perbaco
- 13 Barcha
- 14 The Bird
- 15 North India
- 16 STK Steakhouse
- 17 Grasso SF

● Bar / Lounge

- 1 Holbrook House
- 2 Pagan Idol
- 3 Louie's Bar
- 4 Novela
- 5 The Treasury
- 6 Sutter Station Tavern
- 7 The Barrel Room
- 8 Iron Horse Cocktails
- 9 Nightingale Bar

● Café

- 1 Philz Coffee
- 2 Bluestone Lane
- 3 Red Bay Coffee
- 4 Peet's Coffee
- 5 Blue Bottle Coffee
- 6 Peet's Coffee









ONE SANSONME

SAN FRANCISCO

MIKE BROWN

Vice Chairman
415.274.4423
mike.brown@nmrk.com
CA RE LIC. #01200178

ROMAN ADLER

Exec. Managing Director
415.274.4434
roman.adler@nmrk.com
CA RE LIC. #01520766

AARON GILLESPIE

Sr. Managing Director
415.445.5153
aaron.gillespie@nmrk.com
CA RE LIC. #01971974

BARKER

PACIFIC

GROUP



PGIM

NEWMARK

Barker Pacific Group, Inc. (BPG) is a firm of experienced real estate professionals active in the acquisition, development, and construction management and asset management of major commercial projects. Founded in 1983, the company specializes in the development and acquisition of institutional-quality office, industrial, and residential projects in select U.S. cities. As a developer, BPG has completed, developed or redeveloped in excess of \$3.5 billion in commercial projects. The company enjoys close relationships with major corporate and institutional partners who commend the Barker Pacific Group management team's commitment to excellence, entrepreneurial vision, business acumen, and personal integrity.

PGIM Real Estate has consistently been the largest manager of worldwide institutional assets according to Pensions & Investments, an industry publication.

One Sansome Street, Floor 41, San Francisco, CA 94104 | The distributor of this communication is performing acts for which a real estate license is required. The information contained herein has been obtained from sources deemed reliable but has not been verified and no guarantee, warranty or representation, either express or implied, is made with respect to such information. Terms of sale or lease and availability are subject to change or withdrawal without notice. 7896038599 • 02/26