

203

COURT STREET



CORNER OF COURT & WYCKOFF STREETS | COBBLE HILL



203

COURT STREET

CORNER OF COURT & WYCKOFF STREETS
COBBLE HILL

PROPERTY HIGHLIGHTS

- ADA ramp entryway
- All non-vented uses considered
- Prime corner retail space
- High foot traffic area
- Neighbors include the perfect mix of local retailers and national tenants

SIZE

Ground Floor 1,200 SF

ASKING RENT

Upon Request

FRONTAGE

20'+ Wraparound

POSSESSION

Immediate

CEILING HEIGHTS

10'

TRANSPORTATION



NEIGHBORING TENANTS:

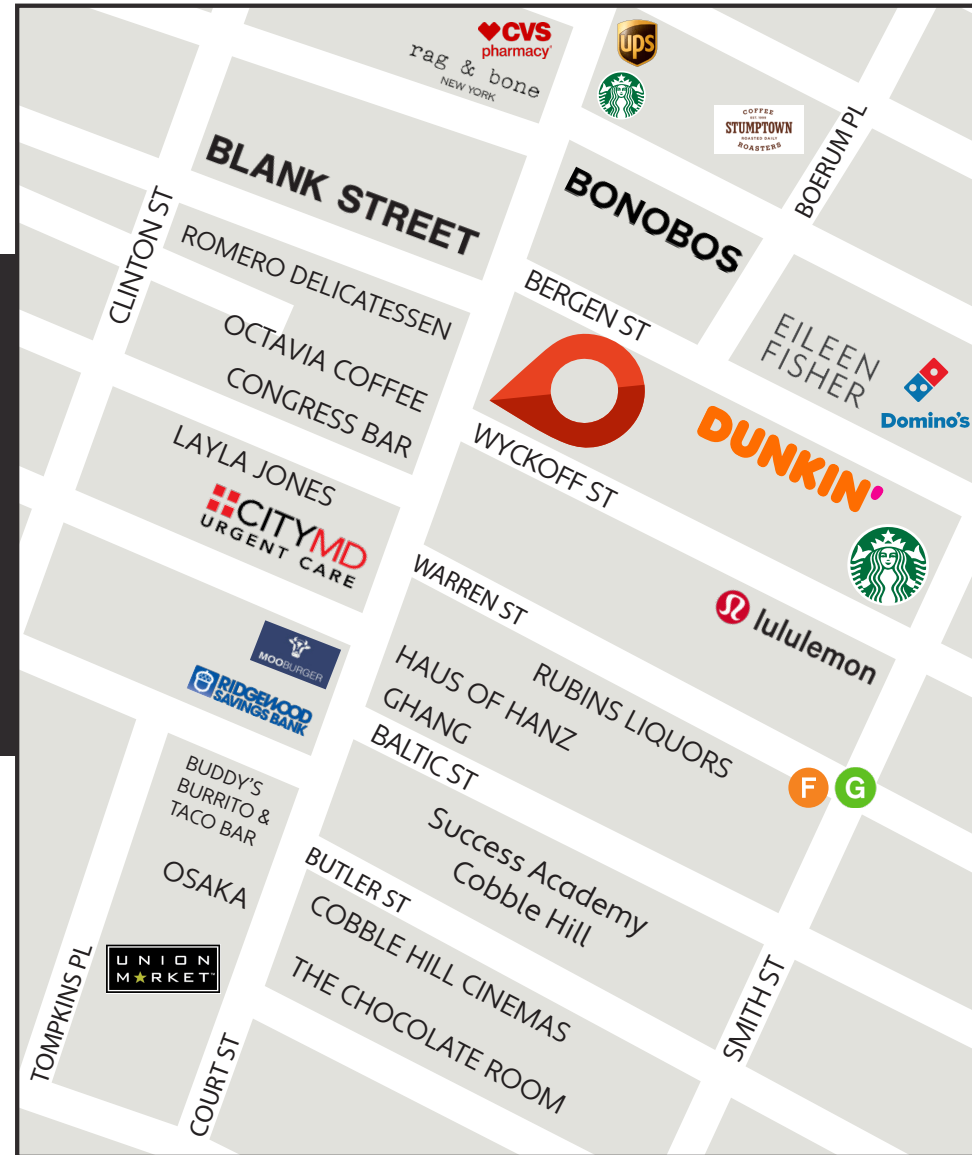


URBAN OUTFITTERS

BONOBOS



BLANK STREET



CONTACT OUR BROKERS FOR MORE INFORMATION

JOSH BERKUN
JBerkun@ksrny.com

516.459.9251

AKRAM MOZEB
AMozebe@ksrny.com

646.897.4792

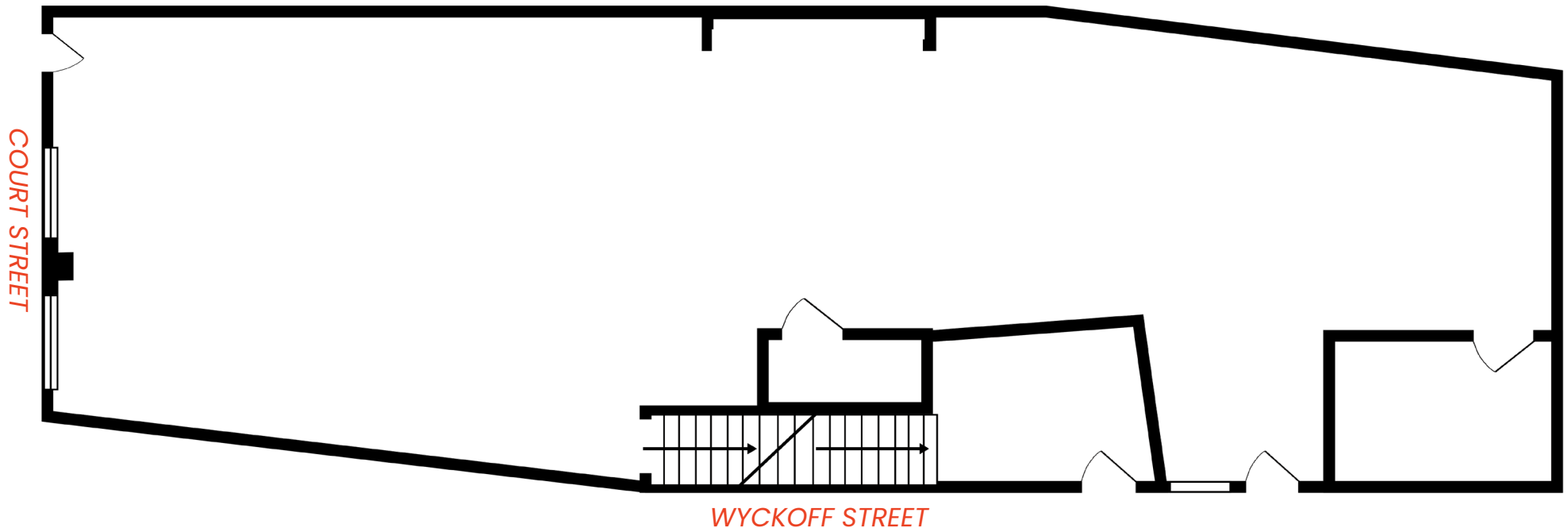
All information supplied in this marketing presentation and/or flyer is from sources deemed reliable and is furnished subject to errors, omissions, modifications, removal of listings from sale/lease and to any listing condition. Any square footage, dimensions, floor plans and/or technical data set forth are approximations and are subject to further elaboration/confirmation.



203 COURT STREET

CORNER OF COURT & WYCKOFF STREETS
COBBLE HILL

FLOOR PLAN
GROUND FLOOR - 1,200 SF



CONTACT OUR BROKERS FOR MORE INFORMATION

JOSH BERKUN
JBerkun@ksrny.com

516.459.9251

AKRAM MOZEB
AMozeb@ksrny.com

646.897.4792

All information supplied in this marketing presentation and/or flyer is from sources deemed reliable and is furnished subject to errors, omissions, modifications, removal of listings from sale/lease and to any listing condition. Any square footage, dimensions, floor plans and/or technical data set forth are approximations and are subject to further elaboration/confirmation.

