

DAVIS INDUSTRIAL PARK

18,025 Sq. Ft.
Industrial/Warehouse
Space For Lease

3241-3255
N.W. YEON C

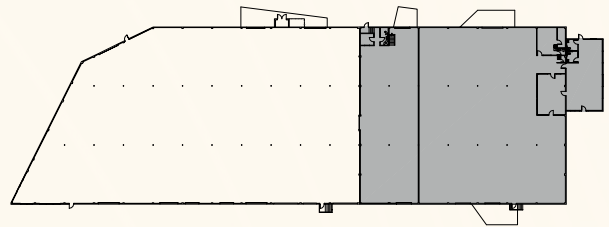
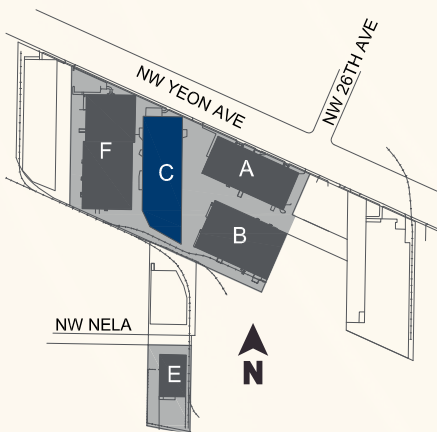
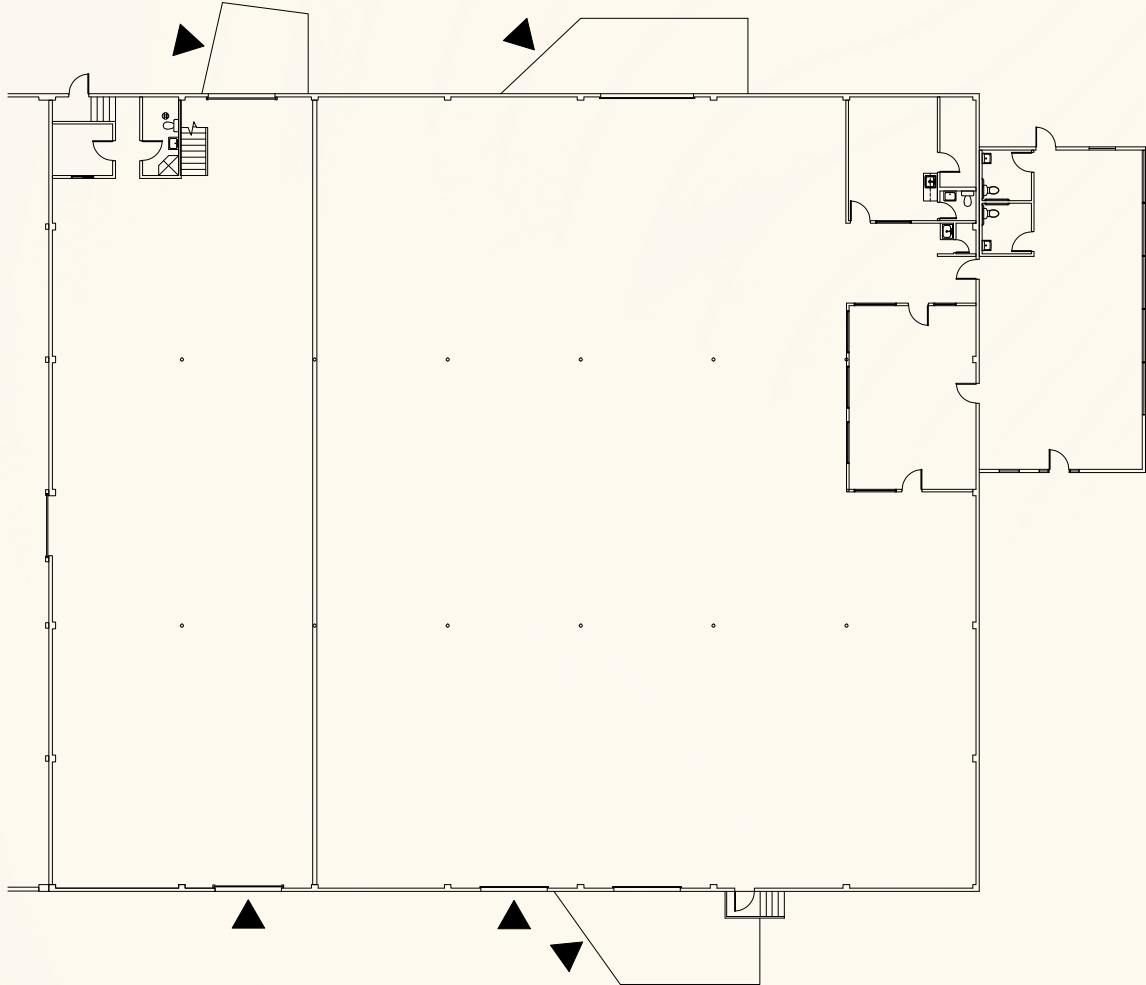
3255 NW Yeon Ave, Portland, OR 97210

PACTRUST

Space Plan | 16' Clear Height

PacTRUST

- ▲ Dock Access
- △ Grade Access



Building Plan

Davis Industrial Park
Industrial/Warehouse Space For Lease



Building C

Key Features



18,025 sq. ft shell



1,487 sq. ft. office



5 dock doors

LED lighting

Convenient access to I-405 and I-5

Desirable Guilds Lake location

Lease Rate:
\$0.85/sq. ft. shell
\$1.10/sq. ft. office

NNN Lease



Suite 3255



Leasing Contacts

Jake Bigby

jakeb@pactrust.com

Caitlin Knecht

caitlink@pactrust.com

503.624.6300

www.pactrust.com

Owned & Managed by

PacTrust

Davis Industrial Park
Industrial/Warehouse Space For Lease

3255 NW Yeon Ave
Portland, OR 97210

