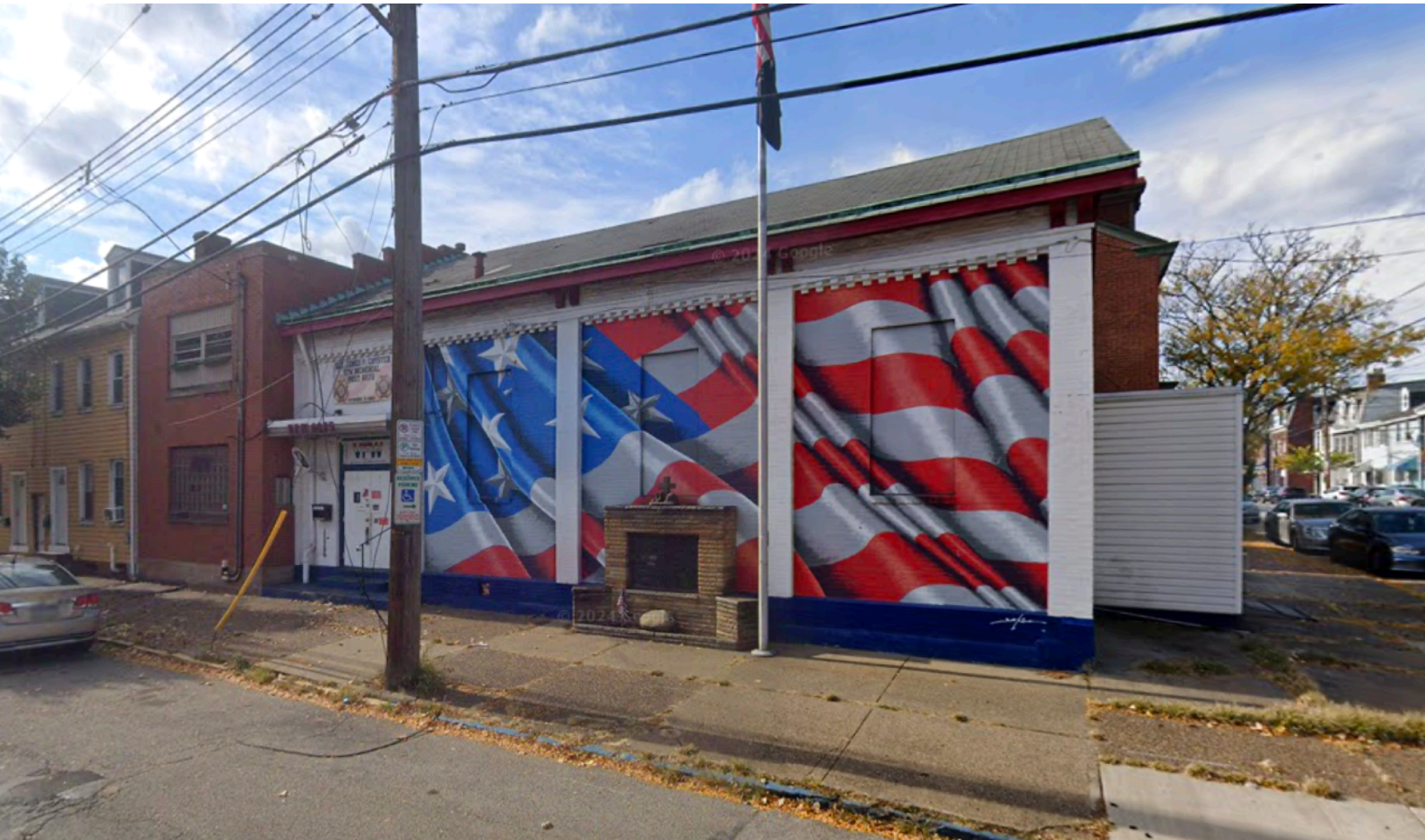


# FOR SALE

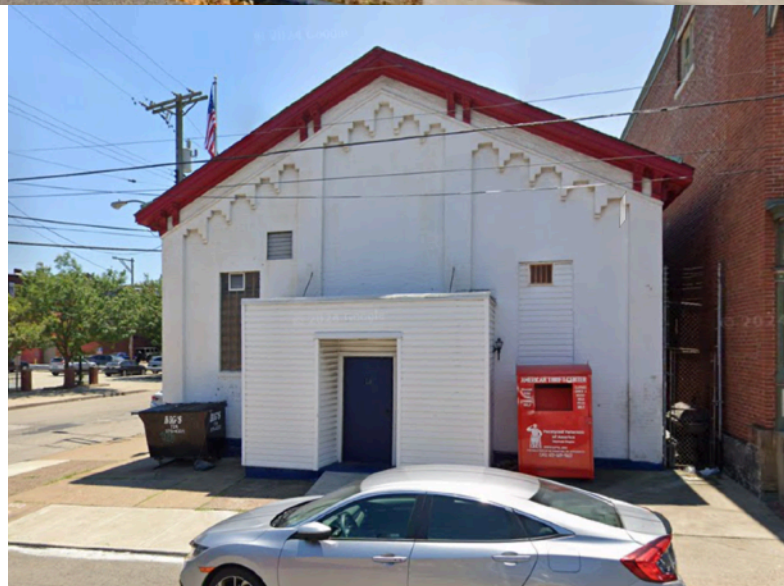
## Former South Side VFW Building

1930 Sidney Street, Pittsburgh, PA 15203



### PROPERTY HIGHLIGHTS:

- On the Corner of Sidney Street & 20th Street
- 2,000 SF Building for Sale in South Side
- Paid Parking Lot Across Street
- Asking Price: \$349,000.00



**NEWMARK**

Licensed in Pennsylvania as Newmark Real Estate

The information contained herein has been obtained from sources deemed reliable but has not been verified and no guarantee warranty or representation either express or implied is made with respect to such information. Terms of sale or lease and availability are subject to change or withdrawal without notice.

For information, please contact:

**Martin Perry, CCIM**  
Senior Managing Director  
O 412-281-0100  
M 412-310-2315  
martin.perry@nmrk.com



# FOR SALE

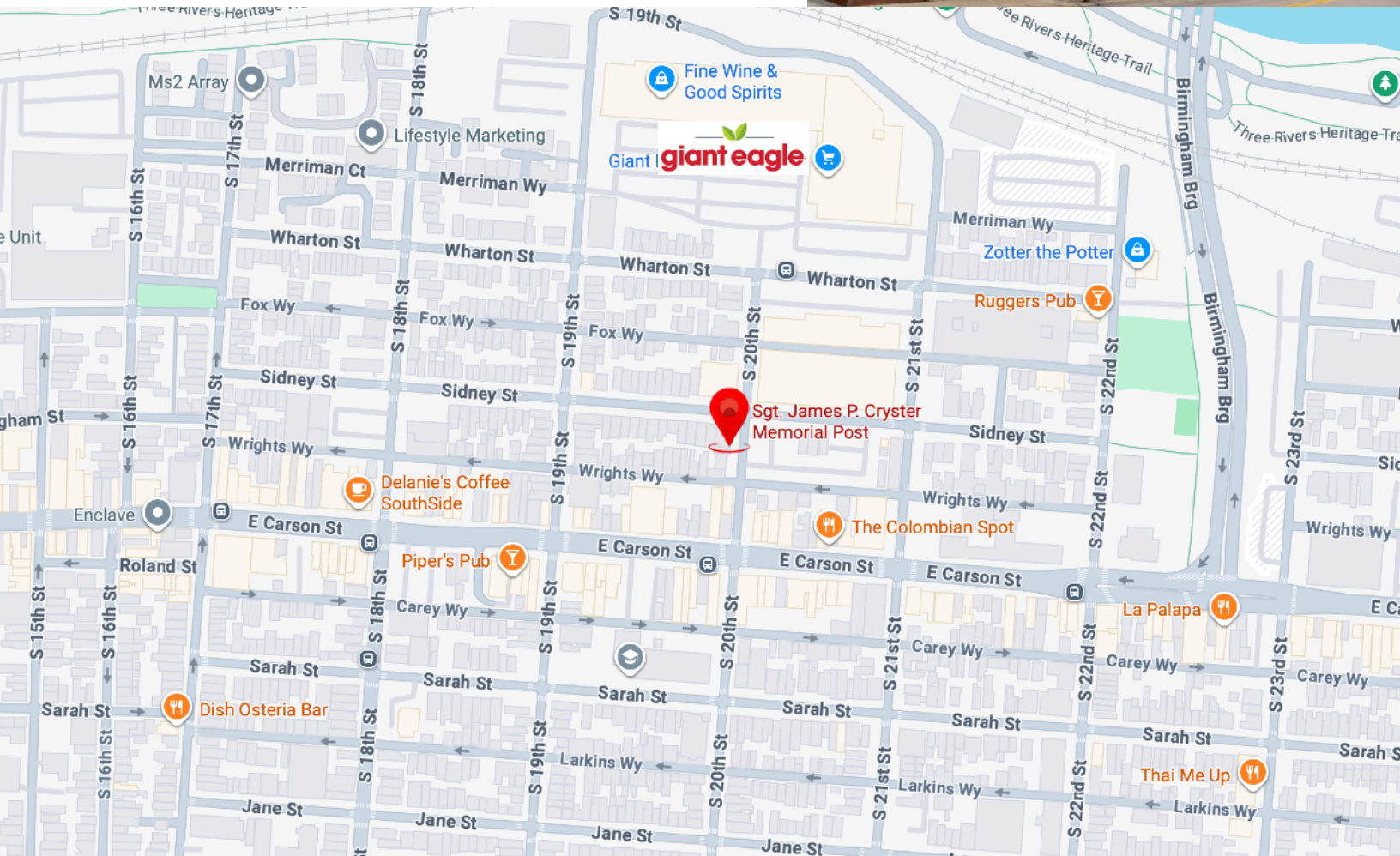
## Former South Side VFW Building

1930 Sidney Street, Pittsburgh, PA 15203

### LOCATION OVERVIEW:

#### SOUTH SIDE, PA

South Side is a vibrant neighborhood in Pittsburgh, PA, situated along the Monongahela River just across from Downtown Pittsburgh. Its main business corridor, East Carson Street, is lined with a wide variety of local shops, restaurants, and bars. The area is especially popular among students from Duquesne University, the University of Pittsburgh, and Carnegie Mellon University, many of whom either live in the neighborhood or frequent it for entertainment and nightlife. With its energetic atmosphere, thriving bar scene, and large population of young professionals and college students, South Side has become one of Pittsburgh's premier nightlife destinations.



For information, please contact:

## NEWMARK

Licensed in Pennsylvania as Newmark Real Estate

The information contained herein has been obtained from sources deemed reliable but has not been verified and no guarantee warranty or representation either express or implied is made with respect to such information. Terms of sale or lease and availability are subject to change or withdrawal without notice.



**Martin Perry, CCIM**  
Senior Managing Director  
O 412-281-0100  
M 412-310-2315  
martin.perry@nrmk.com