

30475-30495 STEPHENSON HWY.
MADISON HEIGHTS, MICHIGAN



**SIGNATURE
ASSOCIATES**
KNOW SIGNATURE | KNOW RESULTS

INDUSTRIAL FOR LEASE
7,500 Square Feet Available



PROPERTY FEATURES

- 7,500 square feet available
- 2,000 square feet office
- 5,500 square feet shop
- 12' clear height
- (3) office rooms
- (1) 8' x 10' grade level door
- Well-positioned industrial space located along Stephenson Highway corridor across from Costco
- This property offers excellent accessibility, functionality, and visibility
- Ideal for a wide range of industrial, retail, flex users and service-based users with close proximity to highway access
- Lease Rate: \$9.95/sq. ft. NNN



For more information, please contact:

MARVIN PETROUS
(248) 359 0647
mpetrous@signatureassociates.com

ANATOLA SESI
(248) 359 0629
asesi@signatureassociates.com

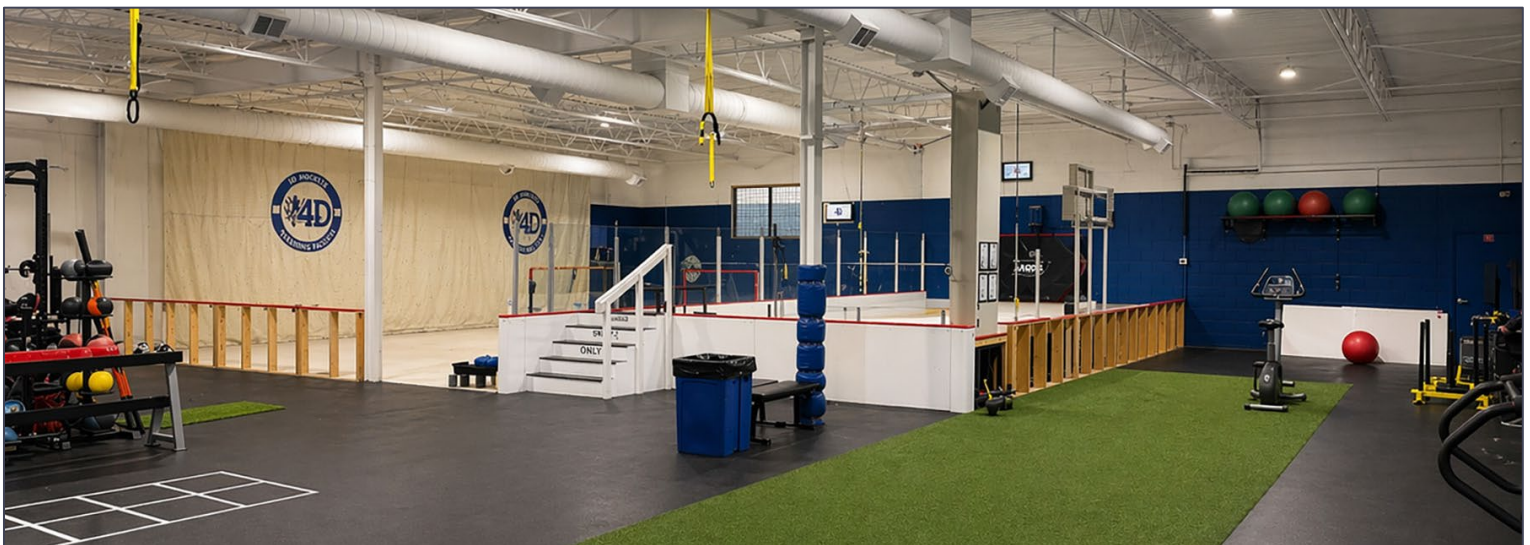
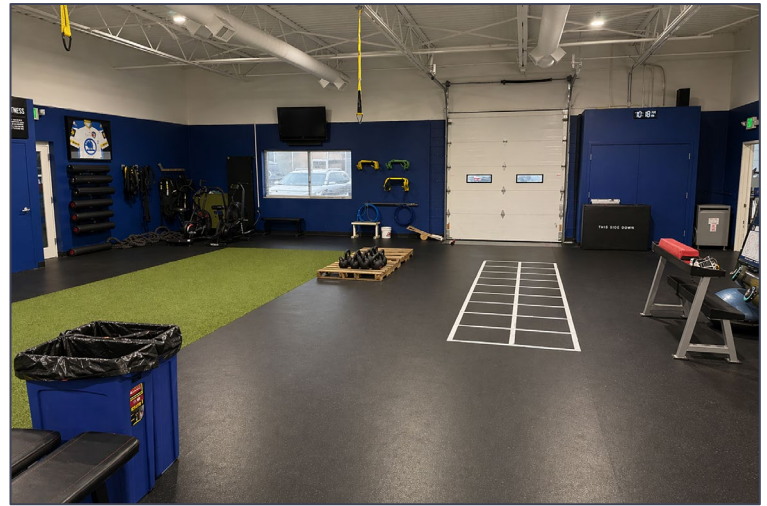
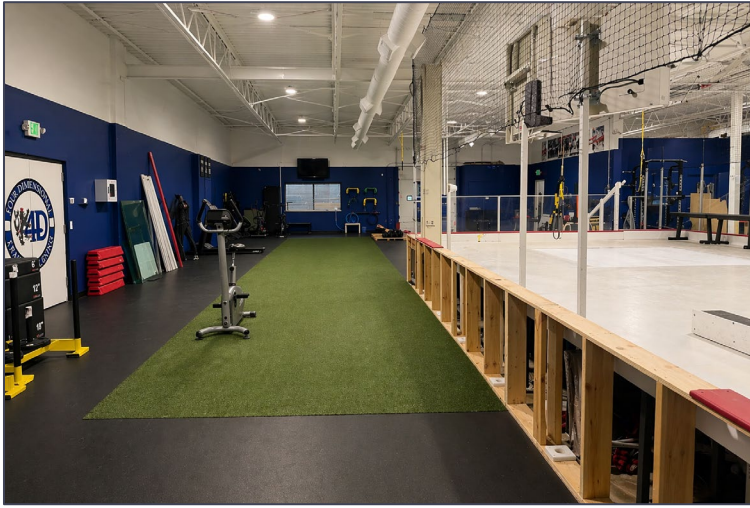
SIGNATURE ASSOCIATES
One Towne Square, Suite 1200
Southfield, MI 48076
www.signatureassociates.com

30475-95 Stephenson Hwy. – Madison Heights, MI

Industrial For Lease

7,500
Square Feet
AVAILABLE

Interior Photos - Before



For more information, please contact:

MARVIN PETROUS
(248) 359 0647
mpetrous@signatureassociates.com

ANATOLA SESI
(248) 359 0629
asesi@signatureassociates.com

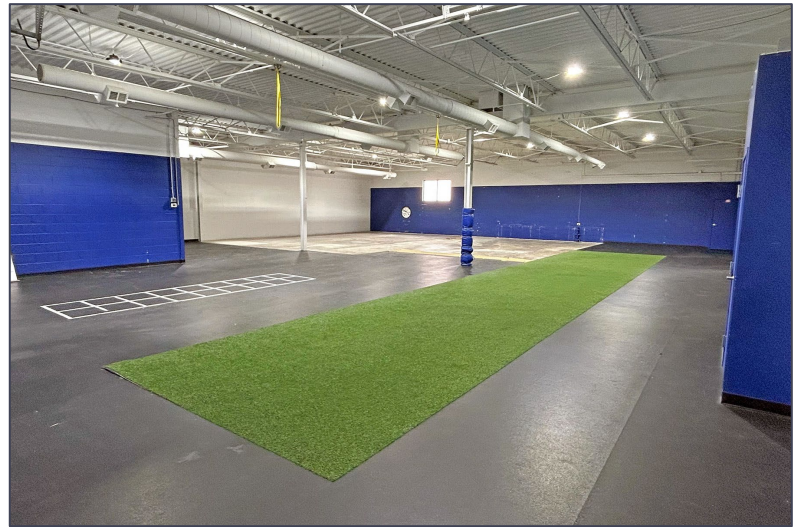
SIGNATURE ASSOCIATES
One Towne Square, Suite 1200
Southfield, MI 48076
www.signatureassociates.com

30475-95 Stephenson Hwy. – Madison Heights, MI

Industrial For Lease

7,500
Square Feet
AVAILABLE

Interior Photos - After



For more information, please contact:

MARVIN PETROUS
(248) 359 0647
mpetrous@signatureassociates.com

ANATOLA SESI
(248) 359 0629
asesi@signatureassociates.com

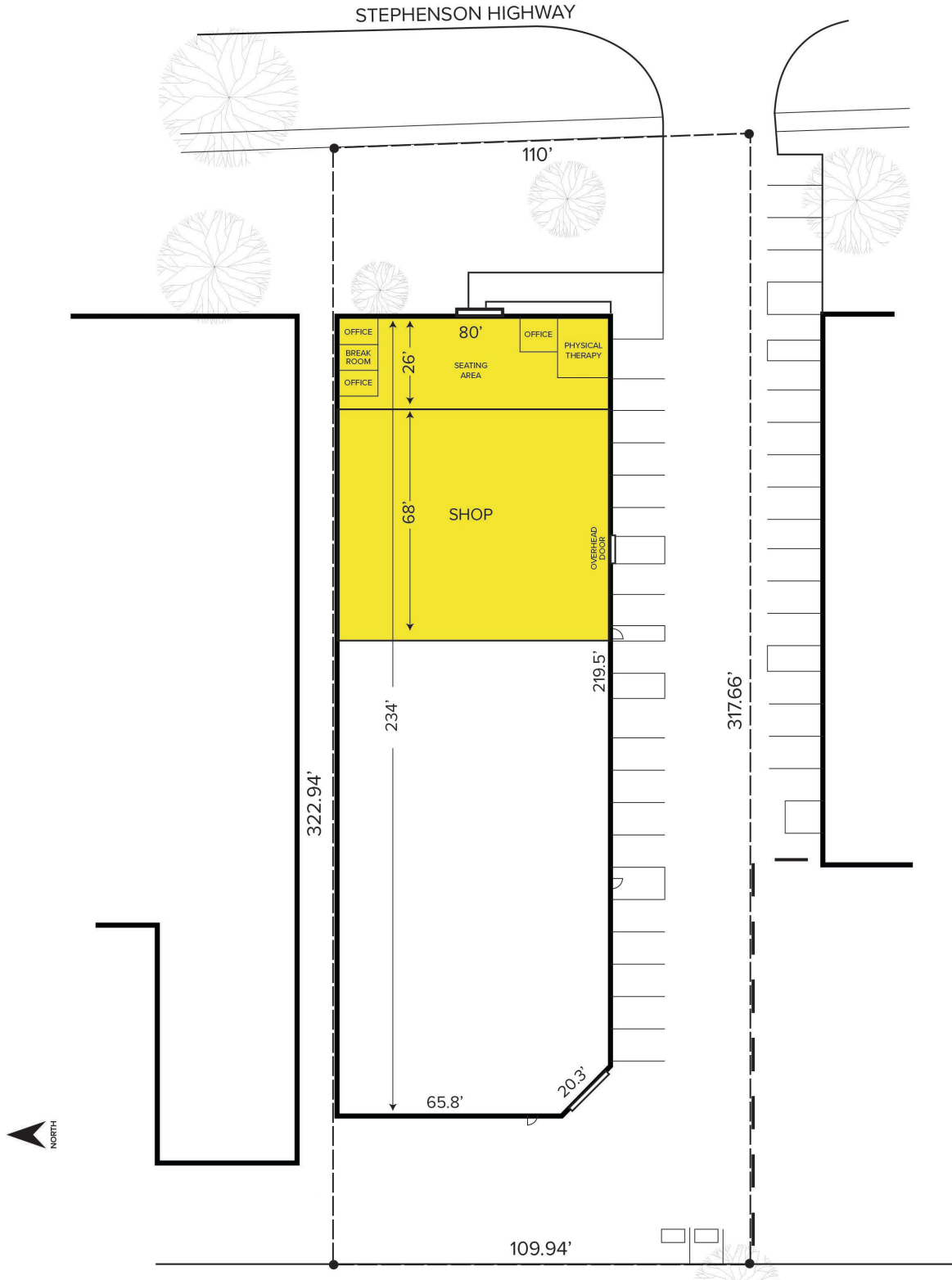
SIGNATURE ASSOCIATES
One Towne Square, Suite 1200
Southfield, MI 48076
www.signatureassociates.com

30475-95 Stephenson Hwy. – Madison Heights, MI

Industrial For Lease

7,500
Square Feet
AVAILABLE

Site Plan



For more information, please contact:

MARVIN PETROUS
(248) 359 0647
mpetrous@signatureassociates.com

ANATOLA SESI
(248) 359 0629
asesi@signatureassociates.com

SIGNATURE ASSOCIATES
One Towne Square, Suite 1200
Southfield, MI 48076
www.signatureassociates.com

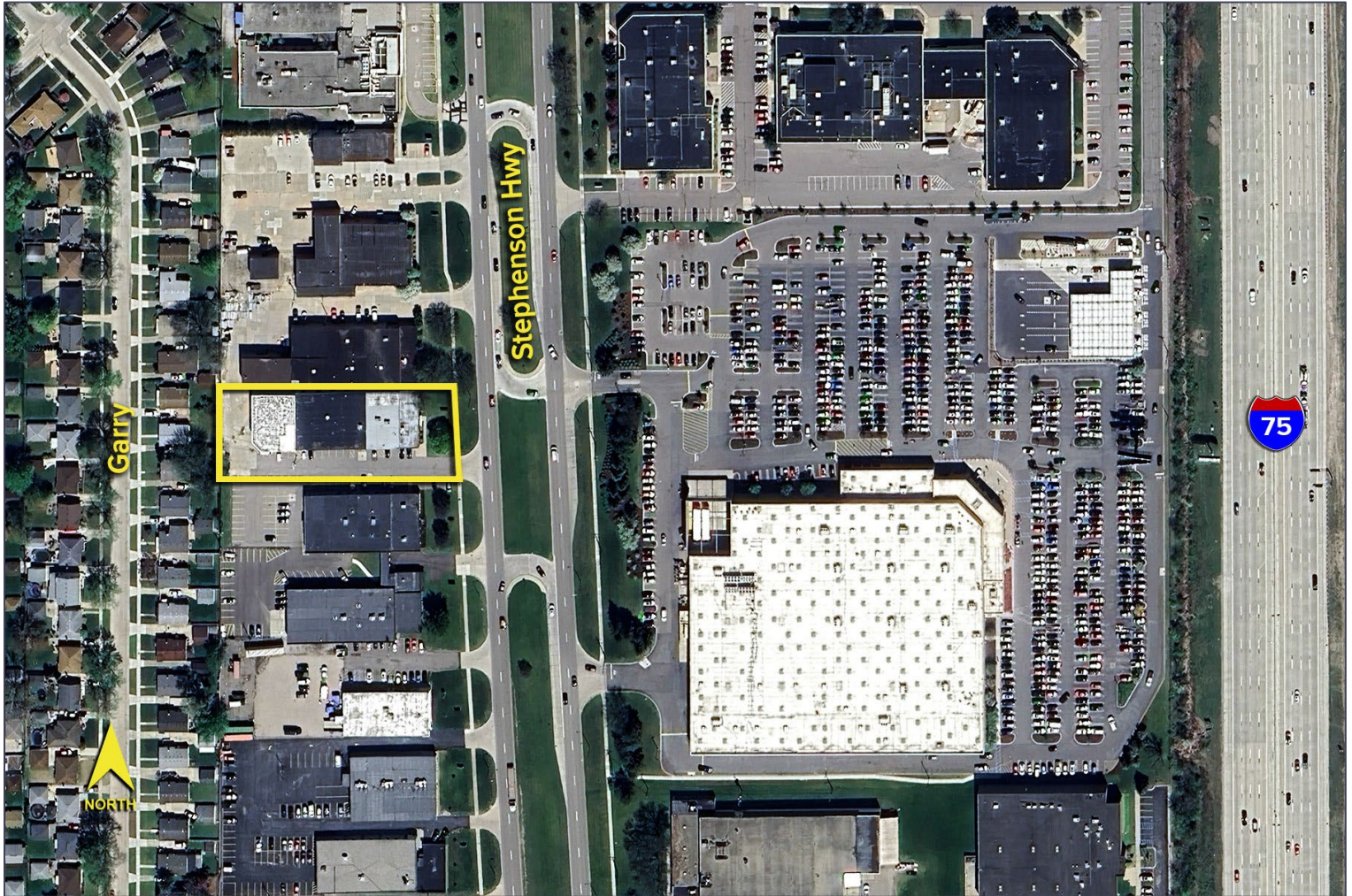
Information is subject to verification and no liability for errors or omissions is assumed. Price is subject to change and listing withdrawal.

30475-95 Stephenson Hwy. – Madison Heights, MI

Industrial For Lease

7,500
Square Feet
AVAILABLE

Aerial



For more information, please contact:

MARVIN PETROUS
(248) 359 0647
mpetrous@signatureassociates.com

ANATOLA SESI
(248) 359 0629
asesi@signatureassociates.com

SIGNATURE ASSOCIATES
One Towne Square, Suite 1200
Southfield, MI 48076
www.signatureassociates.com