



 **JLL** SEE A BRIGHTER WAY

# For Sublease

One Harbour Place  
130 Harbour Place Dr  
5,290 RSF  
Suite 340

**Tommy Lanowy**  
[tommy.lanowy@jll.com](mailto:tommy.lanowy@jll.com)  
+1 401 378 2434



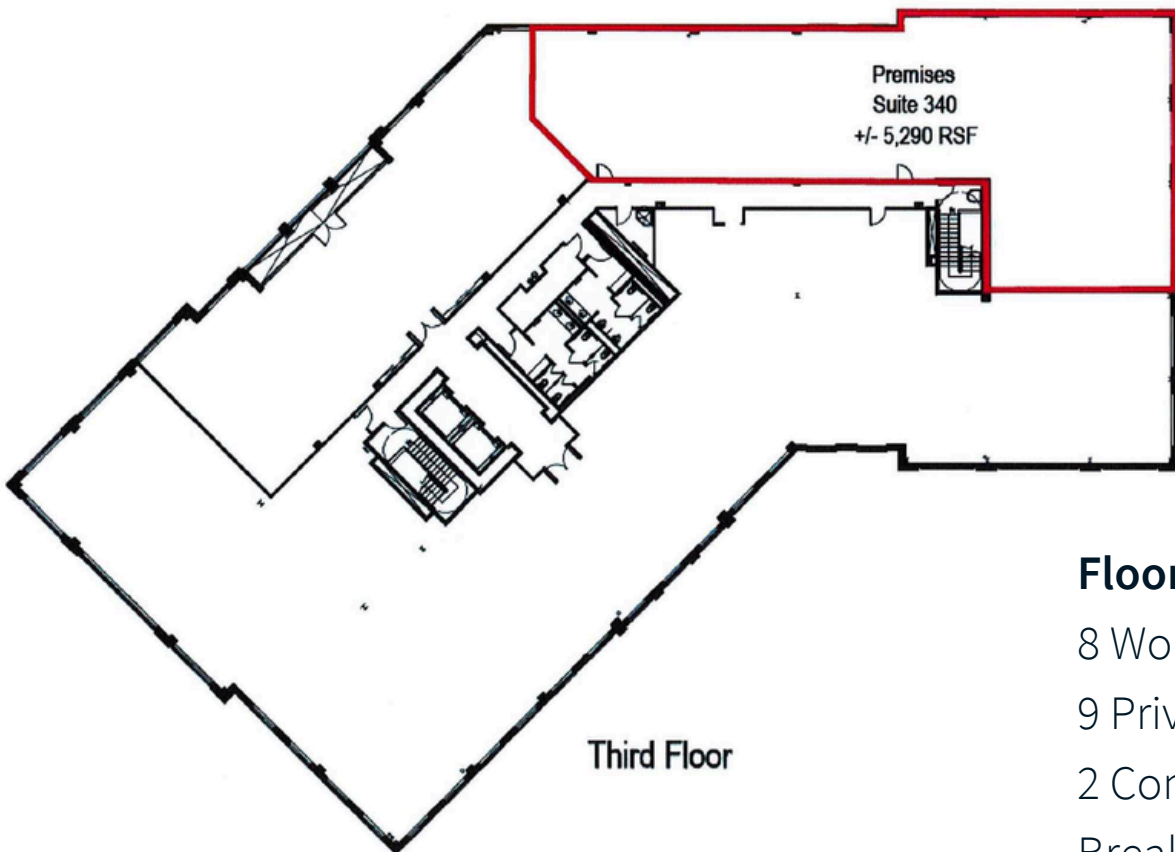
**Availability** Available immediately

**Lease Expiration** April 2031

**FF&E** Available

**Parking** Covered parking available

[Virtual Tour](#)



**Floor Counts:**  
 8 Workstations  
 9 Private offices  
 2 Conference rooms  
 Break room/kitchenette