

2ND & 3RD FLOOR SUITES AVAILABLE OFFICE BUILDING



FOR LEASE



Class A Office Building in Prime Kent Valley Location

Van Doren's Landing Office Plaza

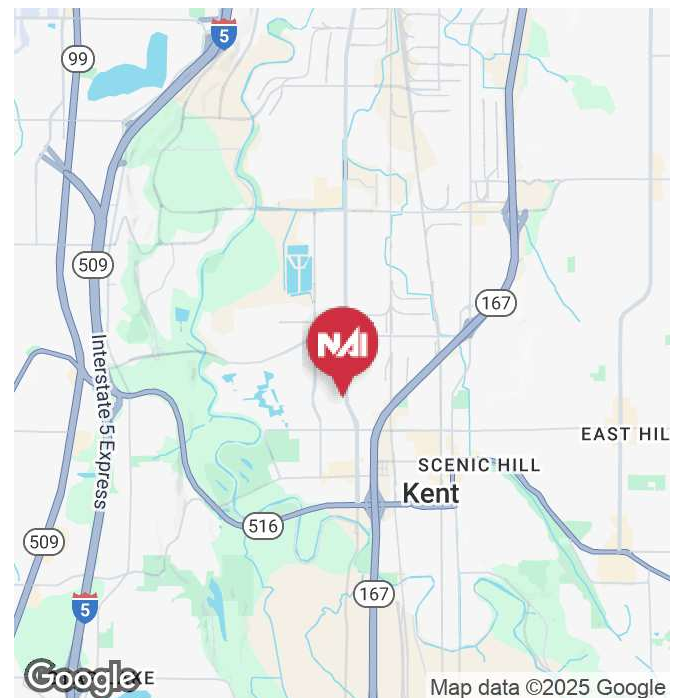
6703 S 234th St, Kent, WA

Available Suites

- Suite 209: 1,852 RSF - 3 private offices, large conference room, medium conference room, and kitchenette.
- Suite 220: 6,489 RSF - Conference room, 6 private offices, open area, and open kitchen. Available 1/1/2026
- Suite 310: 4,801 RSF - 11 private offices, 3 medium conference rooms, and large conference room.

Property Highlights

- Prime Kent Valley location with exposure to West Valley Highway
- Minutes to Kent Station retail center and Regional Justice Center
- Class 'A' finishes throughout the building
- Plentiful parking available
- **Lease Rate:** \$28.50 / RSF, Full service



<https://www.nai-pp.com>

Mike George
Partner | 425.586.5618
mgeorge@nai-pp.com

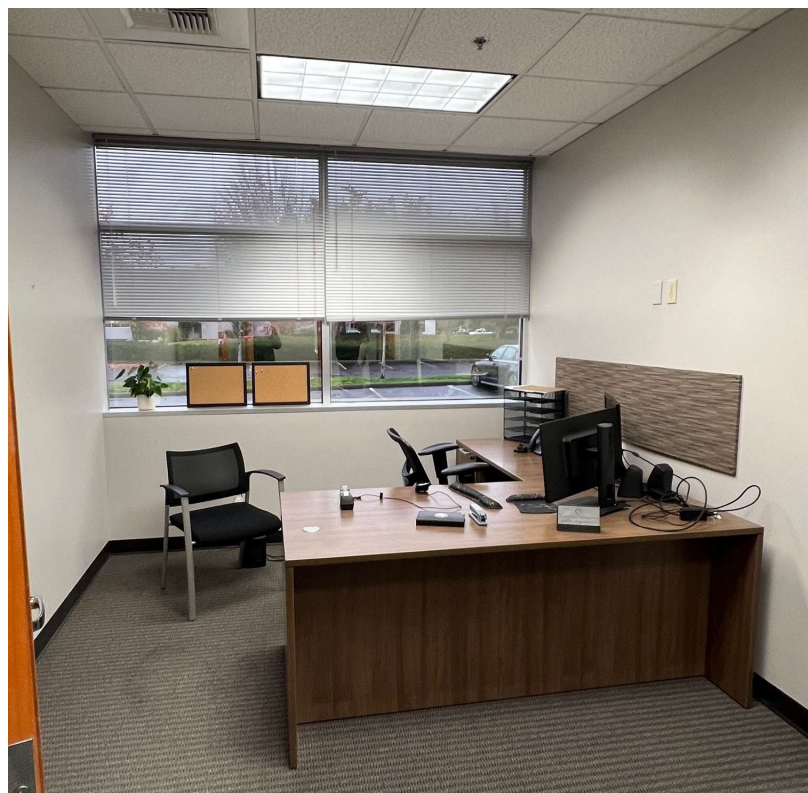
Tony Rona
Vice President | 425.586.5634
trona@nai-pp.com

NO WARRANTY, EXPRESS OR IMPLIED, IS MADE AS TO THE ACCURACY OF THE INFORMATION CONTAINED HEREIN. THIS INFORMATION IS SUBMITTED SUBJECT TO ERRORS, OMISSIONS, CHANGE OF PRICE, RENTAL OR OTHER CONDITIONS, WITHDRAWAL WITHOUT NOTICE, AND IS SUBJECT TO ANY SPECIAL LISTING CONDITIONS IMPOSED BY OUR PRINCIPALS. COOPERATING BROKERS, BUYERS, TENANTS AND OTHER PARTIES WHO RECEIVE THIS DOCUMENT SHOULD NOT RELY ON IT, BUT SHOULD USE IT AS A STARTING POINT OF ANALYSIS, AND SHOULD INDEPENDENTLY CONFIRM THE ACCURACY OF THE INFORMATION CONTAINED HEREIN THROUGH A DUE DILIGENCE REVIEW OF THE BOOKS, RECORDS, FILES AND DOCUMENTS THAT CONSTITUTE RELIABLE SOURCES OF THE INFORMATION DESCRIBED HEREIN. LOGOS ARE FOR IDENTIFICATION PURPOSES ONLY AND MAY BE TRADEMARKS OF THEIR RESPECTIVE COMPANIES.

2ND & 3RD FLOOR SUITES AVAILABLE OFFICE BUILDING



FOR LEASE



NAI Puget Sound
Properties

<https://www.nai-psp.com>

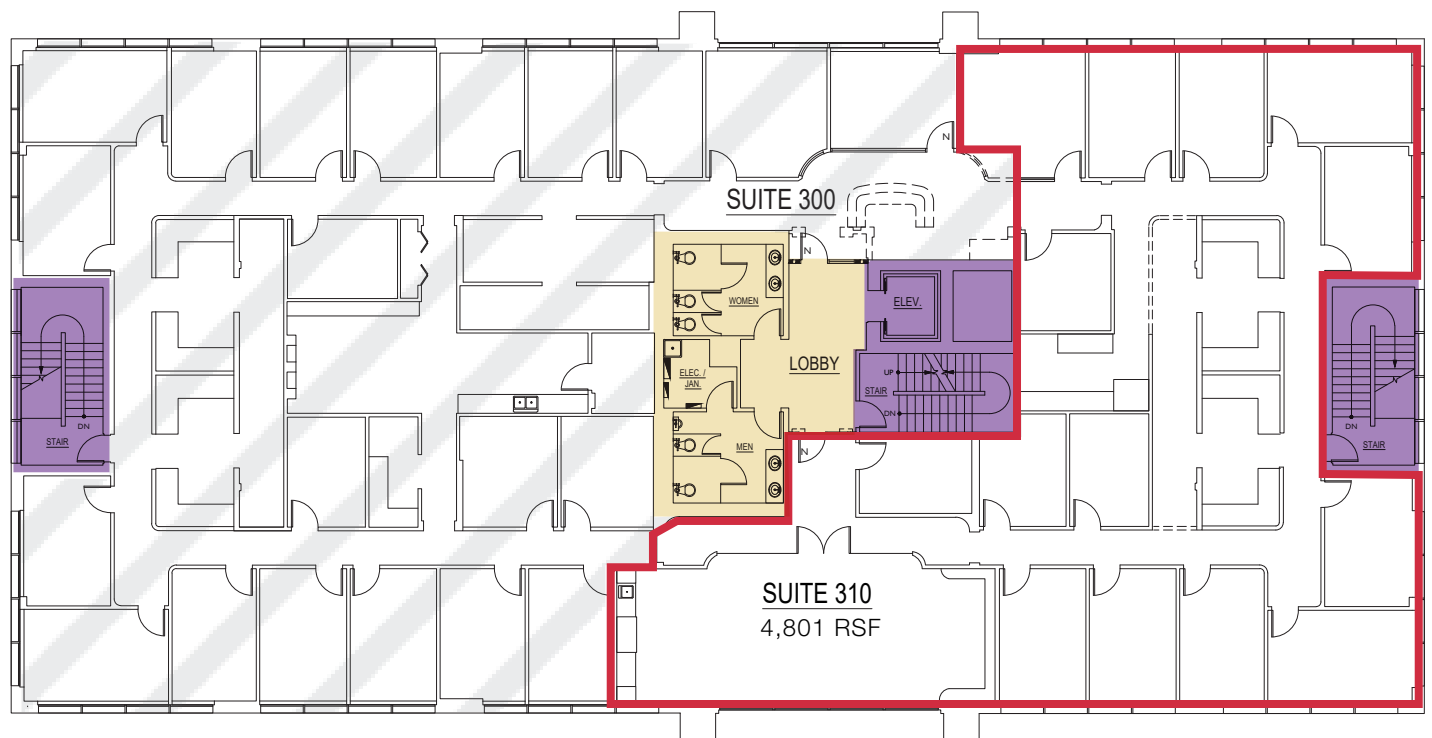
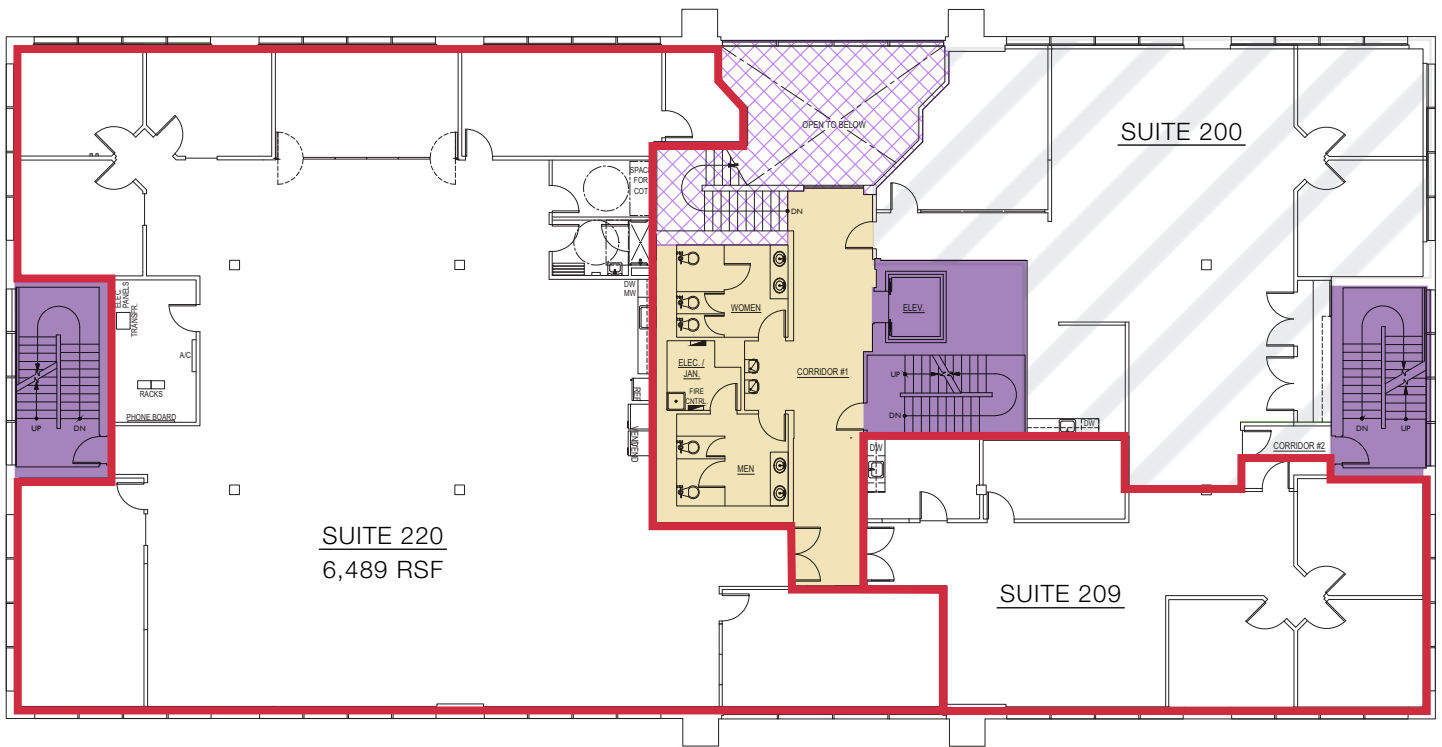
Mike George
Partner | 425.586.5618
mgeorge@nai-psp.com

Tony Rona
Vice President | 425.586.5634
trona@nai-psp.com

NO WARRANTY, EXPRESS OR IMPLIED, IS MADE AS TO THE ACCURACY OF THE INFORMATION CONTAINED HEREIN. THIS INFORMATION IS SUBMITTED SUBJECT TO ERRORS, OMISSIONS, CHANGE OF PRICE, RENTAL OR OTHER CONDITIONS, WITHDRAWAL WITHOUT NOTICE, AND IS SUBJECT TO ANY SPECIAL LISTING CONDITIONS IMPOSED BY OUR PRINCIPALS, COOPERATING BROKERS, BUYERS, TENANTS AND OTHER PARTIES WHO RECEIVE THIS DOCUMENT SHOULD NOT RELY ON IT, BUT SHOULD USE IT AS A STARTING POINT OF ANALYSIS, AND SHOULD INDEPENDENTLY CONFIRM THE ACCURACY OF THE INFORMATION CONTAINED HEREIN THROUGH A DUE DILIGENCE REVIEW OF THE BOOKS, RECORDS, FILES AND DOCUMENTS THAT CONSTITUTE RELIABLE SOURCES OF THE INFORMATION DESCRIBED HEREIN. LOGOS ARE FOR IDENTIFICATION PURPOSES ONLY AND MAY BE TRADEMARKS OF THEIR RESPECTIVE COMPANIES.

2ND & 3RD FLOOR SUITES AVAILABLE OFFICE BUILDING

FOR LEASE



2ND & 3RD FLOOR SUITES AVAILABLE OFFICE BUILDING



FOR LEASE

