 **JLL** SEE A BRIGHTER WAY

For sublease

Humboldt Industrial Center

2601 49th Ave N, Minneapolis, MN

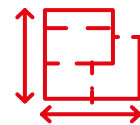
23,875 SF Available
6 More Years of Term

Building specifications

Humboldt Industrial Center



Building SF	135,579 SF
Available SF	6,126 SF Office 17,749 SF Warehouse 23,875 SF Total
Clear Height	25'6"
Loading	Three (3) dock doors One (1) drive-in
Year Built	2006
Parking	245 stalls
Lease Rate	Negotiable
Available	Now
Term Ends	6/30/2031



23,875 SF
available for
sublease



Near **strong**
labor supply

Floor plan

Suite 200

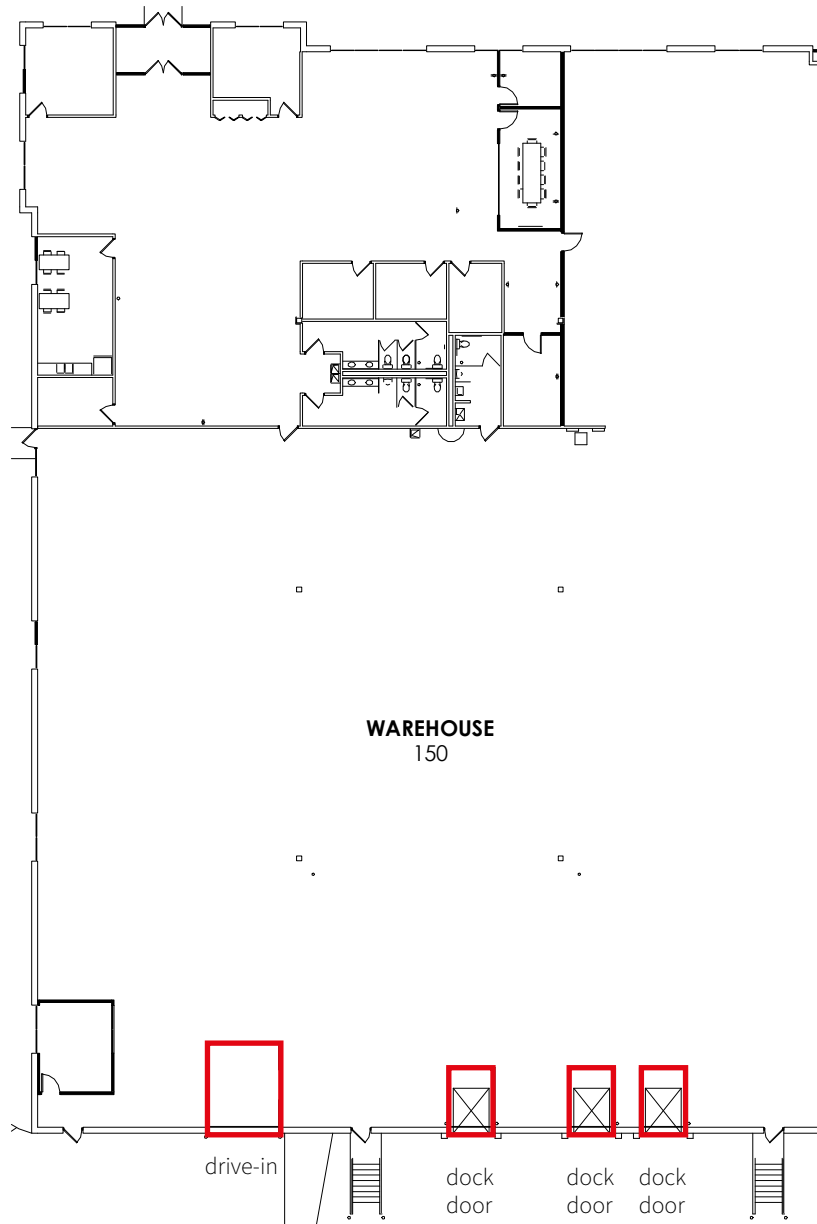
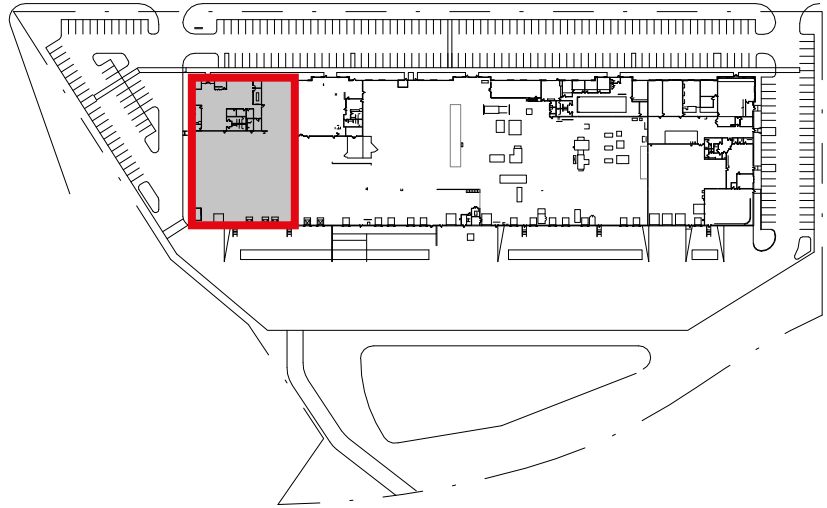
6,126 SF Office

17,749 SF Warehouse

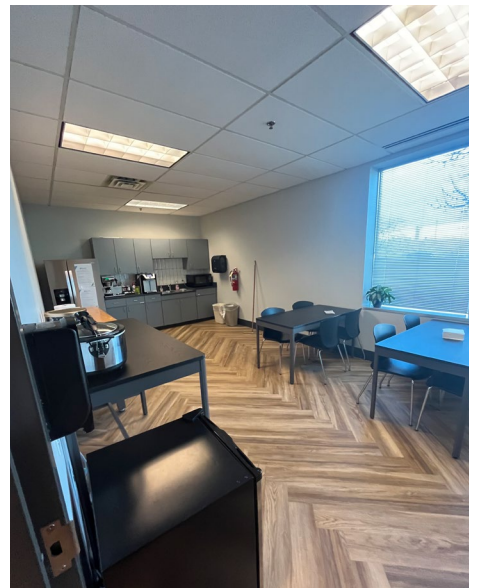
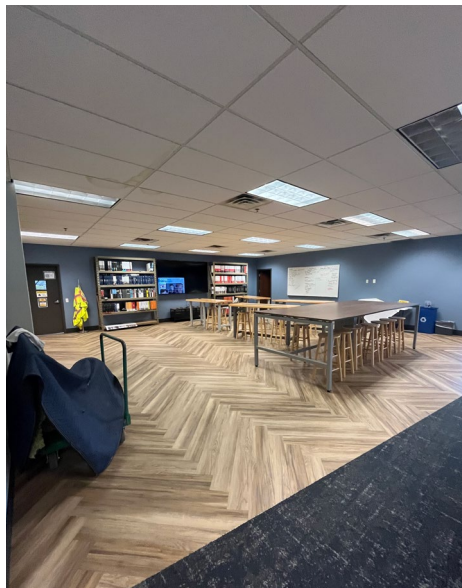
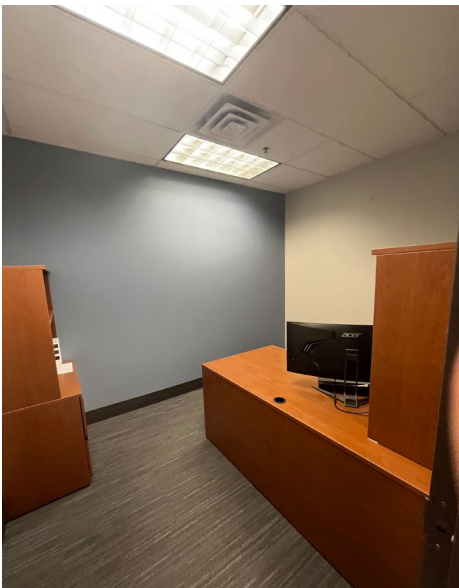
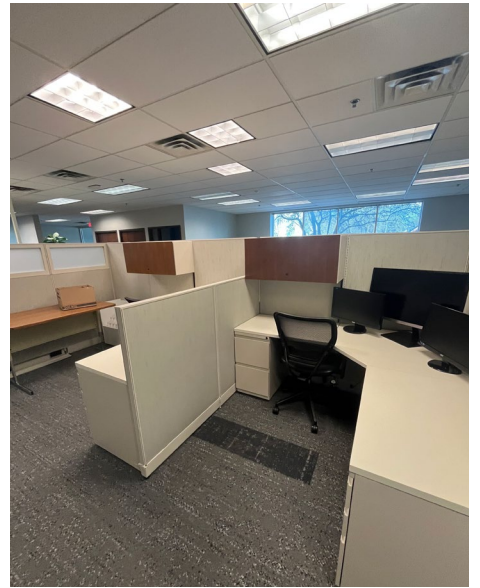
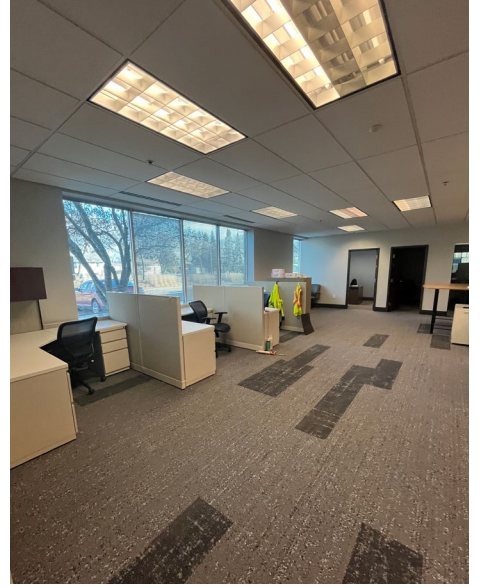
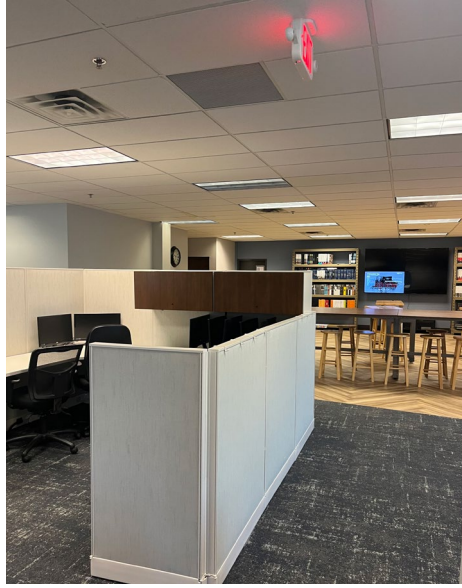
23,875 SF Total

Three (3) dock door

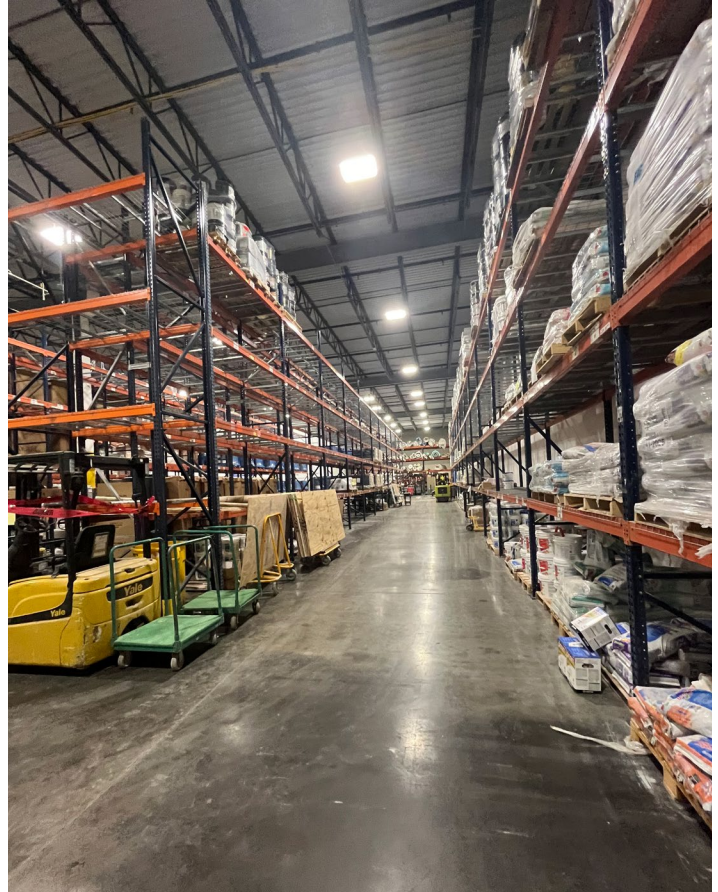
One (1) drive-in

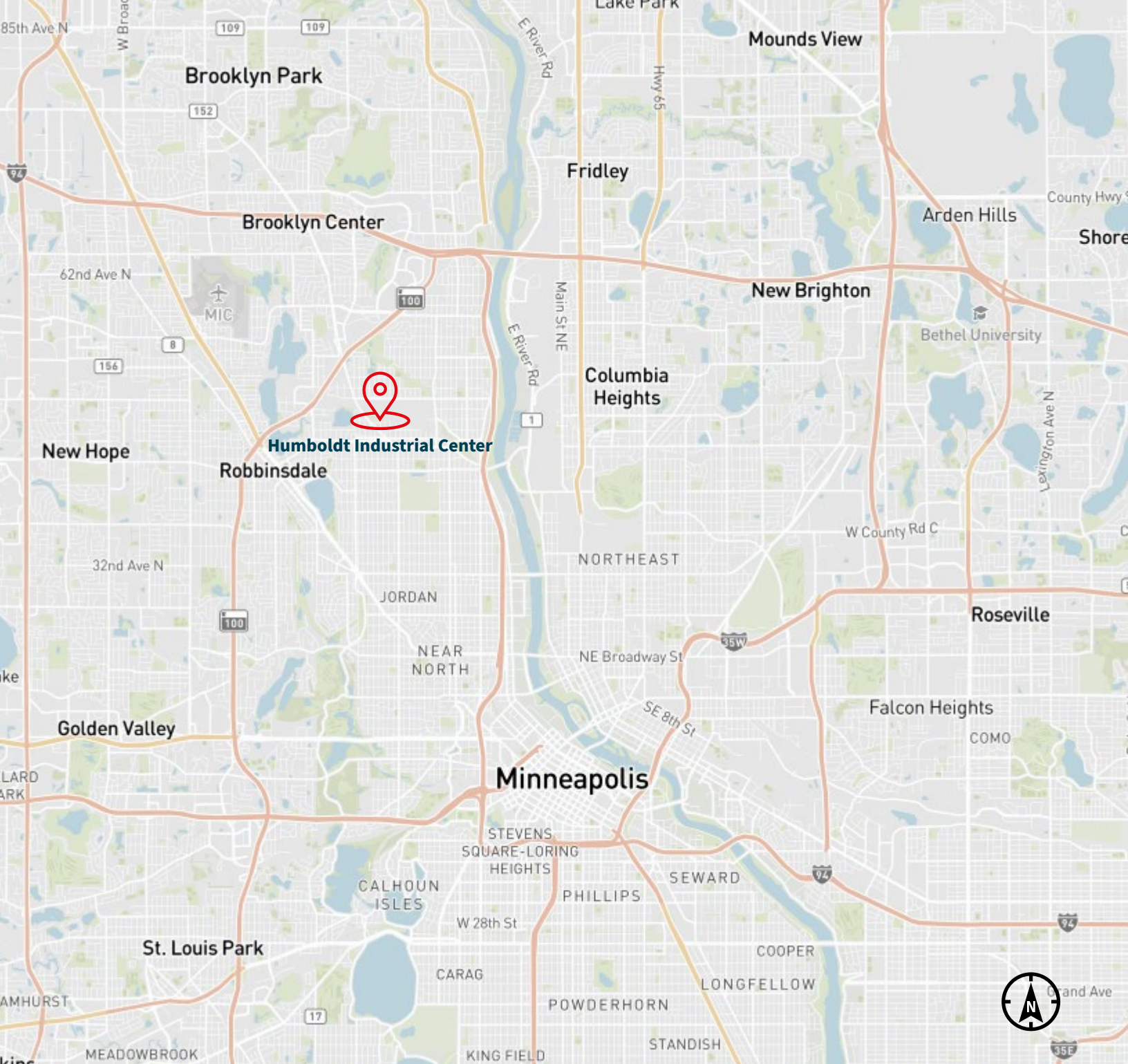


Office photos



Warehouse photos





JLL SEE A BRIGHTER WAY

Will McArdle
Senior Associate
william.mcardle@jll.com
+1 203 954 9696

Chris Hickok, CCIM
Managing Director
chris.hickok@jll.com
+1 612 217 5121

JLL
250 Nicollet Mall
Suite 1000
Minneapolis, MN 55401

Although information has been obtained from sources deemed reliable, JLL does not make any guarantees, warranties or representations, express or implied, as to the completeness or accuracy as to the information contained herein. Any projections, opinions, assumptions or estimates used are for example only. There may be differences between projected and actual results, and those differences may be material. JLL does not accept any liability for any loss or damage suffered by any party resulting from reliance on this information. If the recipient of this information has signed a confidentiality agreement with JLL regarding this matter, this information is subject to the terms of that agreement. ©2024. Jones Lang LaSalle IP, Inc. All rights reserved.

Jones Lang LaSalle Americas, Inc. License #: CO508577000